

## Field Xpert SMT77

Universal, high-performance  
device configuration tablet PC  
for Ex Zone 1 areas



# User-centered design

## Intuitive configuration of all field devices

**Rugged revolution in Ex Zone 1** The device configuration tablet PC Field Xpert SMT77 enables mobile Plant Asset Management in hazardous (Zone 1) areas. It is ideal for commissioning and maintenance staff to manage field instruments with digital communication interface and to document the work progress.

**Out of the box – ready to go** This tablet PC comes as complete solution and provides an easy and touch-optimized “tool” to manage field instruments during their entire life cycle resulting in saving time and cost per device. It provides pre-installed driver libraries and access to the Industrial Internet of Things (IIoT) as well as life cycle instrument information and documentation.

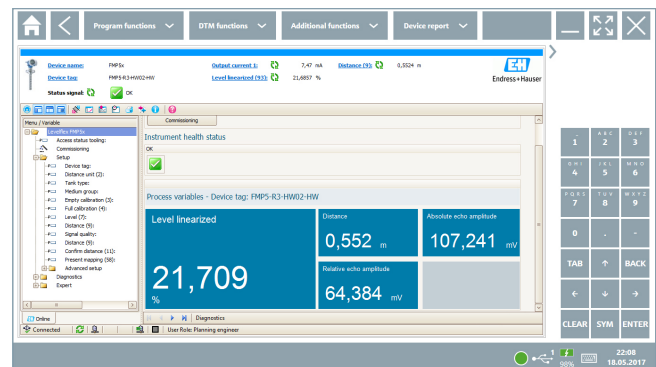
**With one-click connection** Field Xpert SMT77 provides a modern software user interface and offers online software, DTM and driver update capabilities, based on a multipurpose and secure Microsoft Windows 10 environment.



Supports Heartbeat Verification!



Field Xpert SMT77



User-centered design focuses on ease of use



### Highlights:

- High-performance, robust tablet with large 10.1" display and a battery runtime of up to 5 hours.
- Touch-enabled device configuration software in 20 languages. Includes NAMUR NE 107 instrument diagnosis.
- Pre-installed device driver libraries for all of the important industrial protocols.
- Automatic saving of a HART device report in Netilion Library saves time and money.
- Automatic hardware detection saves time.
- Integrated Heartbeat Verification incl. PDF documentation.
- Online application software, DTM and driver update service offers new functionality and maximum security.

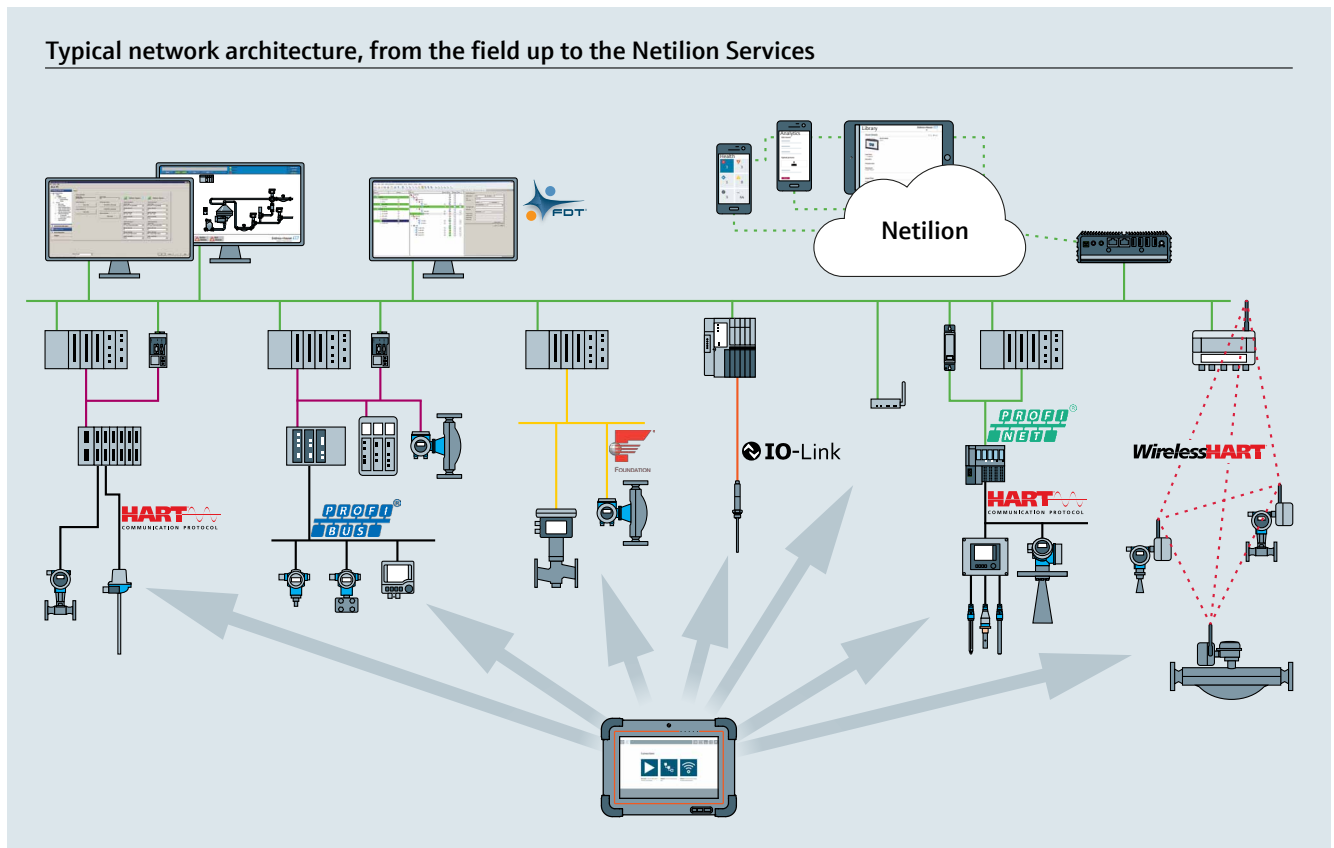


### Technical data:

- 10.1" LCD display, 2x bonded Gorilla Glass
- Intel N3710 1,6 GHz (Turbo 2,56 GHz), 8 GB RAM, 128 GB SATA uSSD
- IP65, -20...50 °C, 5...95 % humidity
- Windows 10 IIoT Enterprise CBB
- 5 MP autofocus camera with flashlight
- 2 MP front facing camera
- Wi-Fi 802.11 a/b/g/n/ac / Bluetooth 4.1 LE, Class 1
- 4G LTE, GPS
- 1 x USB 2.0
- Micro SD card slot (SDHC + SDXC)
- Up to 5 h operating time
- 290 x 209 x 33 mm
- 2.3 kg
- Optional docking station (Ethernet, 4 x USB and HDMI connection)

# One-click connectivity

## Easy connection



Field Xpert SMT77 communicating with HART, PROFIBUS, FOUNDATION Fieldbus as well as WirelessHART (and much more) field devices

## The fastest way to configure any field device via fieldbus protocols and Endress+Hauser service protocols

**Multiprotocol support** offers proven combination of hardware, software and communication interfaces.

### Connection to a device:

- Point-to-point via USB or Bluetooth modem
- Network via gateways, remote IOs, multiplexer
- Wireless via WLAN and Bluetooth to Endress+Hauser field devices

### Supported communication technologies:

- HART
- PROFIBUS DP/PA
- FOUNDATION Fieldbus
- IO-Link
- Modbus
- CDI
- Endress+Hauser service interfaces (incl. firmware flashing)

### Supported hardware interfaces:

- Commubox FXA195 (HART)
- MACTek Bluetooth modem (HART)
- PROFIsusb (PROFIBUS DP)
- Fieldgate SFG500 (PROFIBUS DP)
- FieldPort SFP50 (HART, PROFIBUS PA and FOUNDATION Fieldbus)
- FieldPort SFP20 (IO-Link)
- FFusb (FF-H1)
- Commubox FXA291 (CDI)
- CDI TCP/IP
- Memograph RSG45 (HART)
- HART Viator USB modem with PowerXpress

### Supported field devices:

- All Endress+Hauser and 3rd party devices based on DTM or EDD technology



More details on Netilion Library



[netilion.endress.com/library-best-practice](https://netilion.endress.com/library-best-practice)

[www.addresses.endress.com](https://www.addresses.endress.com)

INO1136S/04/EN/02.20