

Plant Asset Management in a production site for chemicals

3 Field Xpert SMT70 tablets for 3,200 HART instruments

Field Xpert SMT70

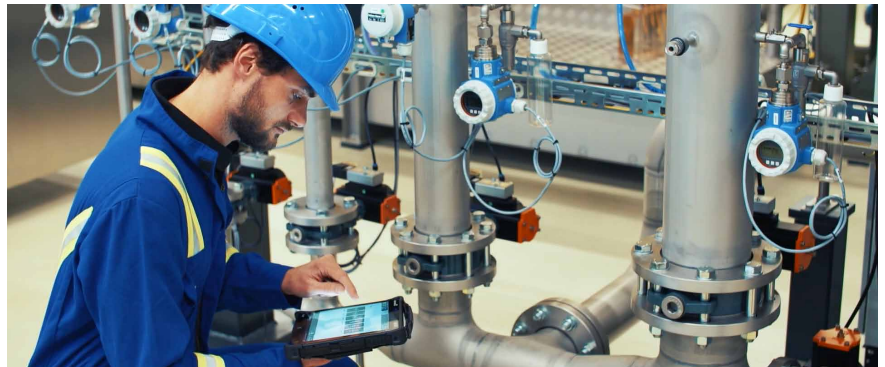
Endress+Hauser industrial tablets are a more suitable tool than standard laptops. In order to have a big screen, our customer used to take a laptop into the factory until recently. However, those are not suitable in a potentially explosive environment.

Field Xpert SMT70 industrial tablets introduced last year drastically changed that: now connection and configuration of all instruments is fast, easy and secure.



Universal, high-performance tablet PC for device configuration

The Field Xpert SMT70 tablet PC for device configuration enables mobile plant asset management in hazardous (Ex zone 2) and non-hazardous areas. It is suitable for commissioning and maintenance staff to manage Endress+Hauser and third-party field instruments with digital communication interface.



Field Xpert in action, right where information is crucial

Our longtime client has been using Endress+Hauser's industrial PDAs for many years, which are used to communicate 'in the field' with HART instruments. Until recently.

Since the purchase of the industrial Field Xpert SMT70 tablets, the PDAs, but also the laptops that they sometimes used, are "unemployed in the closet".

Customer challenge The E&I dept. is responsible for purchase, management and maintenance of currently more than 18,000 devices in total, most of them 'with a cord attached'.

In particular, installations with HART technology can only be approached in the field on the basis of a Point-to-Point connection. For this communication, HART Handheld Communicators and industrial PDAs were used so far, but their technology quickly became obsolete. Updating was increasingly difficult and memory storage was limited.

Our solution Many of the instruments are already connected to the centralized FieldCare Device Configuration Management system. Parameter assurance and configurations are in an SAP PM system, which also exchanges information with W@M. This is where the industrial tablets Field Xpert SMT70 are an ideal mobile workstation in the field. They have powerful, fast processors and a generous, easy-to-read touch screen. Not only does this represent an important step forward in terms of hardware, but also a significant improvement in terms of software.

Project scope The tablets support, thousands of instruments, including all instruments of Endress+Hauser, but also all registered third-party instruments. Data and settings are automatically stored. This allows all HART instruments to be configured in the field, while additional third-party drivers (DTMs) can easily be installed. 3 Field Xpert SMT70 and docking stations were delivered.

The Field Xpert SMT70 software is intelligent and powerful. “With this we now have a beautiful mobile platform that will allow us to move forward for a few years to come”, says the E&I responsible. “In addition to the enormous ease of use, the new tablets also provide a clear speed gain. They connect very quickly to the instruments, which you can immediately check for correct operation. If you change the parameter settings ‘in the field’, a new PDF will be created immediately. If you put the tablet in the docking station when you return to the office, the PDF is automatically placed on the server so that the instrument data is always up to date. This is also a great advantage when replacing such an instrument. We now have three Field Xpert SMT70 tablets in use and are still discovering new useful features. Everyone in the department likes to work with them.”

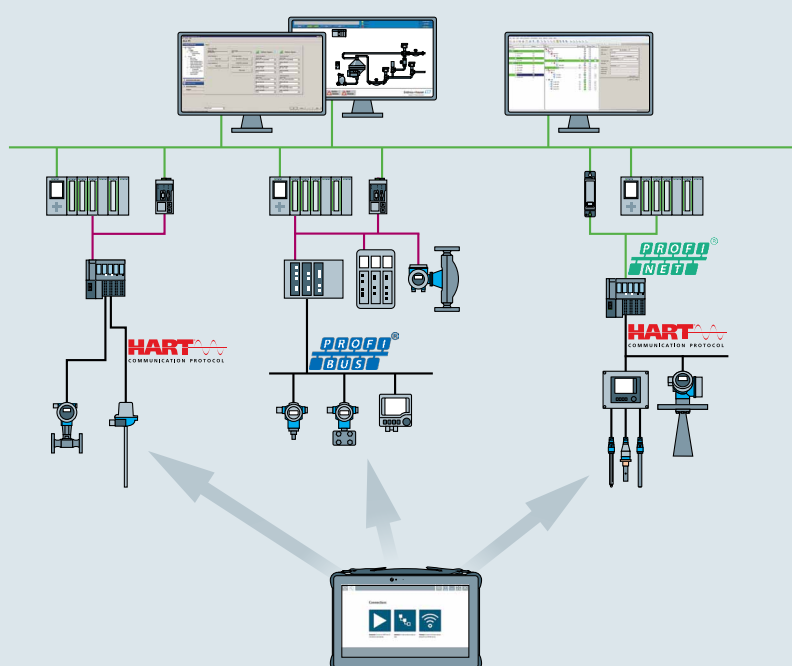


Field Xpert SMT70 offers many useful features

Features and benefits

- High-performance, robust tablet with large 11.6" display and a battery runtime of up to 14 hours
- Touch-enabled device configuration software with a direct link to the Netilion Ecosystem for optimized Plant Asset Management
- Pre-installed device driver libraries for all of the important industrial protocols
- Fast connection to devices with a single click thanks to automatic hardware detection, online application software and DTMs/Drivers update service offers new functionality and maximum security
- Integrated Heartbeat Verification incl. PDF documentation
- Connection to Endress+Hauser Bluetooth and WLAN devices – perfect for difficult-to-access instruments

Field Xpert SMT70 in a typical network architecture



Field Xpert SMT70 as mobile workstation right in the field

www.addresses.endress.com