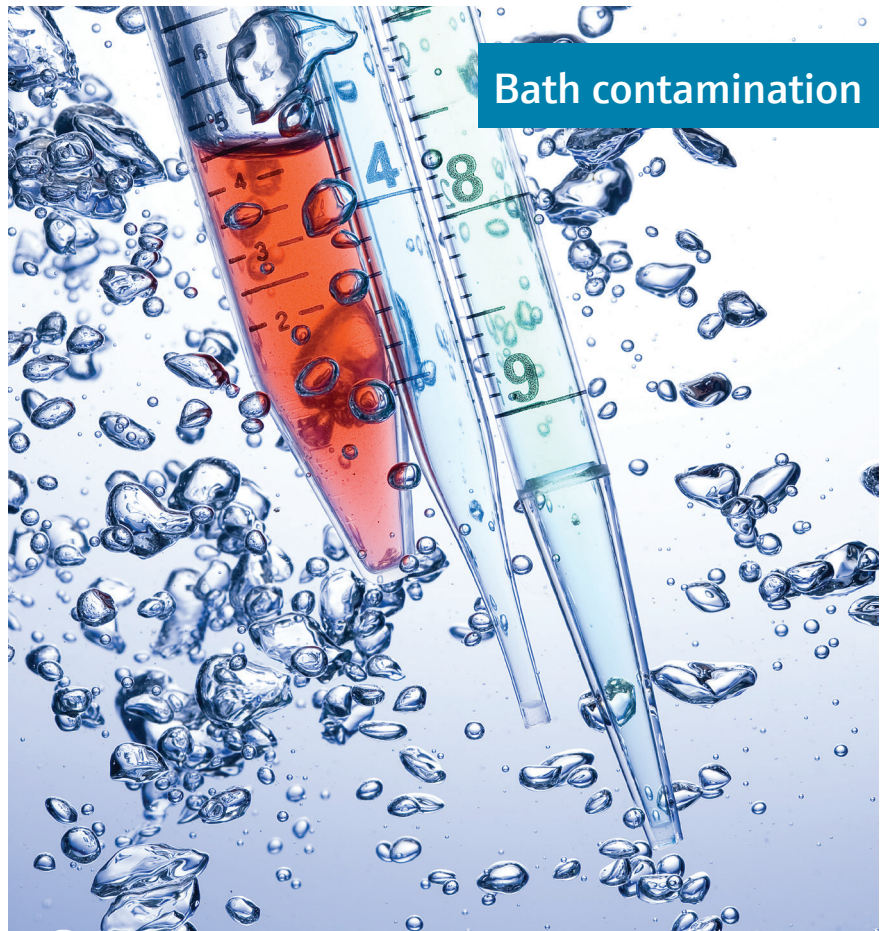


Teqwave

Individual and smart concentration measurement

Your benefits in brief

- Measurement of the cleaner concentration and bath contamination
- Robust measurement with long-term stability
- Maintenance-free, no moving parts
- Reliable thanks to integrated temperature compensation
- Precise factory calibration ensures highest accuracy
- Permanent in-line measurement
- Common interfaces for connecting easily to control systems



Recording the cleaner concentration and bath contamination simultaneously

Teqwave is capable of measuring two concentrations in the fluid simultaneously by measuring the speed of sound and acoustic density. The solution for monitoring cleaning baths.

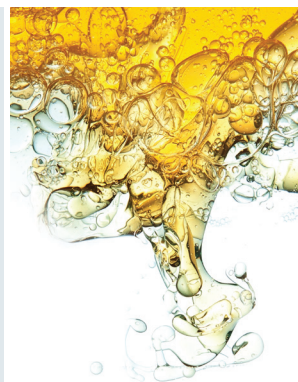
Simple, fast and cost-saving

Teqwave – also measures contamination

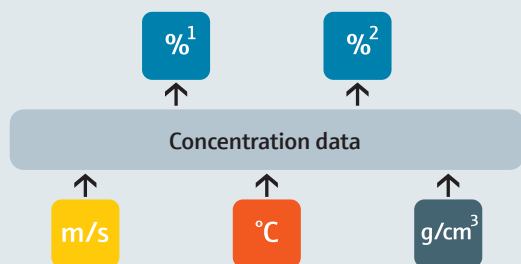
The next evolutionary leap!

With Teqwave you can measure and document the cleaner concentration and the bath contamination simultaneously in real time. The advantage for you is process management that is reliable and sustainable. Thus, the labor-intensive titration process in the area of industrial component cleaning is not necessary anymore.

The concentration of common cleaners for industrial component cleaning can be recorded in-line by measuring the speed of sound and temperature. This is impressively proved by the existence of several hundred concentration data records for all relevant manufacturers carrying cleaners and just as many measuring systems in the field.



How it works



The concentration of both, the cleaner and the bath contamination, can be determined in-line with the right concentration data by combining the temperature, speed of sound and acoustic density. Concentration data are created to customer specification in our applications laboratory. We make use of intelligent evaluation algorithms based on multivariate data analysis.

The solution: Teqwave

Measurement of two different concentrations with a single measuring system and our application concept. By simultaneously measuring the speed of sound and acoustic density, together with the suitable concentration data determined in laboratory by Endress+Hauser, it is possible to record the concentration of both the cleaner (concentration 1) and the bath contamination (concentration 2). The user-friendly application solution makes this possible: Use the Teqwave concentration data for seamless control and documentation of your process.

Thanks to its common interfaces, the measuring system can be optimally connected to the process control system or a distributed control system. As a result, changes can be responded to immediately, for example, by activating a dosing pump.

www.addresses.endress.com