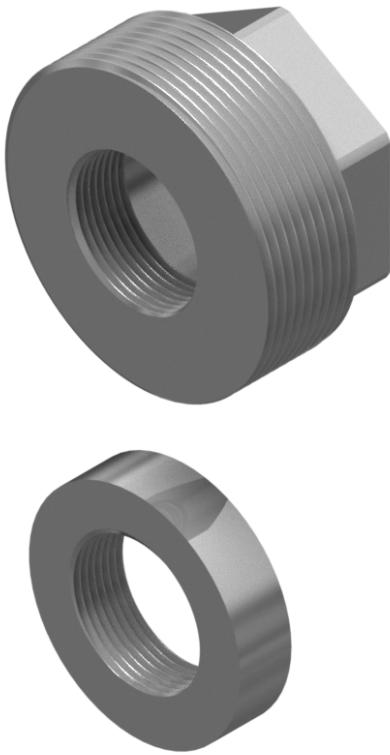


# Technical Information

## FAR52

### Screw-in/weld-in adapter



Universal screw-in or weld-in adapter for existing process threads or holes in metallic walls, ideal for simple retro-fitting

#### Application

- Process adapter for the Soliwave microwave barrier and the Solimotion flow indicator
- Simple and cost-effective installation solution

#### Properties

- Adapter without process separation
- Suitable for holes in metallic walls and existing process threads Rp 2 to Rp 4 (acc. to EN 10226) or 2 NPT to 4 NPT (acc. to ANSI/ASME)
- The screw-in adapter with R 2 to R 4 can also be used for existing threads with G 2 to G 4 (acc. to ISO 228-1).
- Material: Stainless steel or steel

#### Your benefits

- Cost-effective adapter for existing process threads or simple retro-fitting with weld-in version
- Special versions (dimensions and material) are available on request

Table of contents

**About this document** ..... **3**  
Symbols ..... 3

**Performance characteristics** ..... **3**  
Operating conditions ..... 3  
Material ..... 3  
Device connection ..... 4

**Mechanical construction** ..... **4**  
Dimensions ..... 4  
Weight ..... 4

**Installation conditions** ..... **5**  
Mounting position ..... 5  
Installation instructions ..... 5

**Mounting** ..... **6**  
Mounting ..... 6

**Ordering information** ..... **6**

## About this document

### Symbols

#### Safety symbols



This symbol alerts you to a dangerous situation. Failure to avoid this situation will result in serious or fatal injury.



This symbol alerts you to a dangerous situation. Failure to avoid this situation can result in serious or fatal injury.



This symbol alerts you to a dangerous situation. Failure to avoid this situation can result in minor or medium injury.



This symbol contains information on procedures and other facts which do not result in personal injury.

#### Symbols for certain types of information



Permitted  
Procedures, processes or actions that are permitted.



Forbidden  
Procedures, processes or actions that are forbidden.



Tip  
Indicates additional information



Reference to documentation



Reference to another section



Reference to graphic



1, 2, 3 ... Series of steps

#### Symbols in graphics

A, B, C ... View

1, 2, 3 ... Item numbers

## Performance characteristics

### Operating conditions

#### Process temperature

See devices of the Soliwave microwave barrier or Solimotion flow indicator

#### Process pressure

See devices of the Soliwave microwave barrier or Solimotion flow indicator



The maximum process temperature and pressure are determined by the installed devices.

### Material

- Stainless steel 316Ti (1.4571)
- Stainless steel 316L (1.4404)
- Steel P235GH (1.0345)

**Device connection**

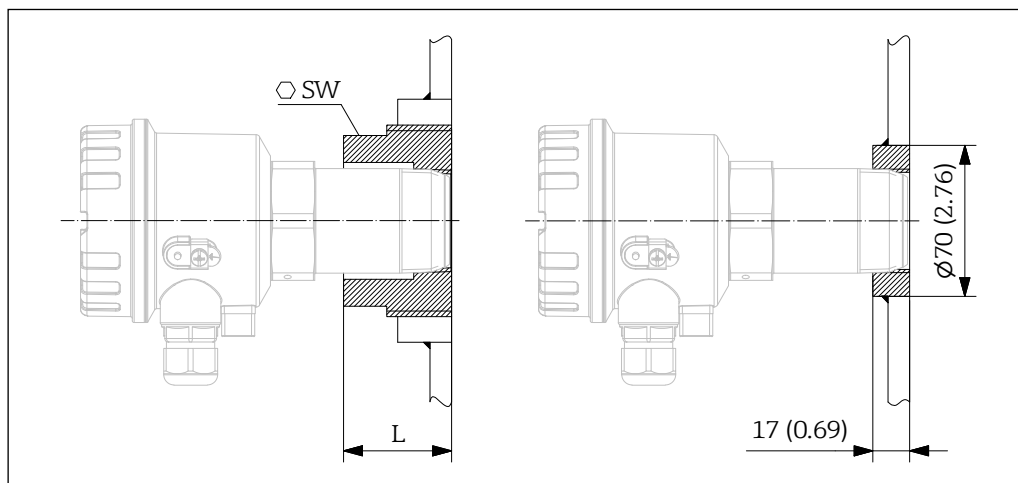
Suitable for the devices of the Soliwave microwave barrier and the Solimotion flow indicator, the following threads are available:

- R 1½ in accordance with EN 10226
- 1½ NPT in accordance with ANSI/ASME
- G 1½ in accordance with ISO 228-1



The device connection G 1½ according to ISO 228-1 is only available on weld-in version.

## Mechanical construction

**Dimensions**

1 Dimensions. Unit of measurement mm (in)

0000000174

Adapter thread	SW mm (in)	L mm (in)
R2	55 (2.17)	45 (1.77)
R3	70 (2.76)	50 (1.97)
R4	70 (2.76)	55 (2.17)
2 NPT	54 (2.13)	40 (1.58)
3 NPT	70 (2.76)	50 (1.97)
4 NPT	70 (2.76)	55 (2.17)

Tolerances: L ±1 mm, 17 ±0.5 mm, 70 ±0.5 mm

**Weight**

The weight depends on version and process connection, for example:

- FAR52-AAAA1A  
Weld-in adapter, material steel P235GH (1.0345), device connection thread R 1½ in accordance with EN 10226  
Weight 0.3 kg (0.66 lb)
- FAR52-BVL23B  
Screw-in adapter thread 4 NPT ANSI/ASME, material stainless steel 316L (1.4404), device connection thread 1½ NPT ANSI/ASME  
Weight 1.8 kg (4 lb)


## Installation conditions

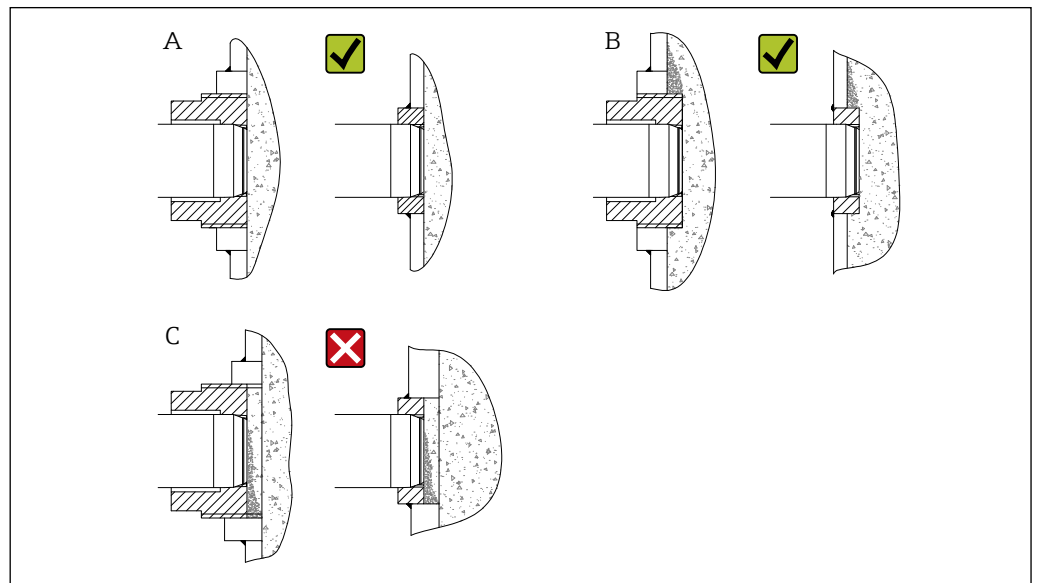
### Mounting position

The adapter can be installed in any position.

### Installation instructions

When using the adapter with the microwave barrier Soliwave, it is essential to ensure that the devices FDR and FQR can be mounted directly opposite each other (see relevant Technical Information as well).

-  Mount the adapter so that it is flush with the inner vessel wall (**A**).
- Alternatively, the adapter can protrude slightly into the process (**B**), as long as there is no risk of being damaged by falling media.
- A recessed position (**C**) must be avoided, because media can accumulate there, impairing the function of the devices.



 2 Installation instructions

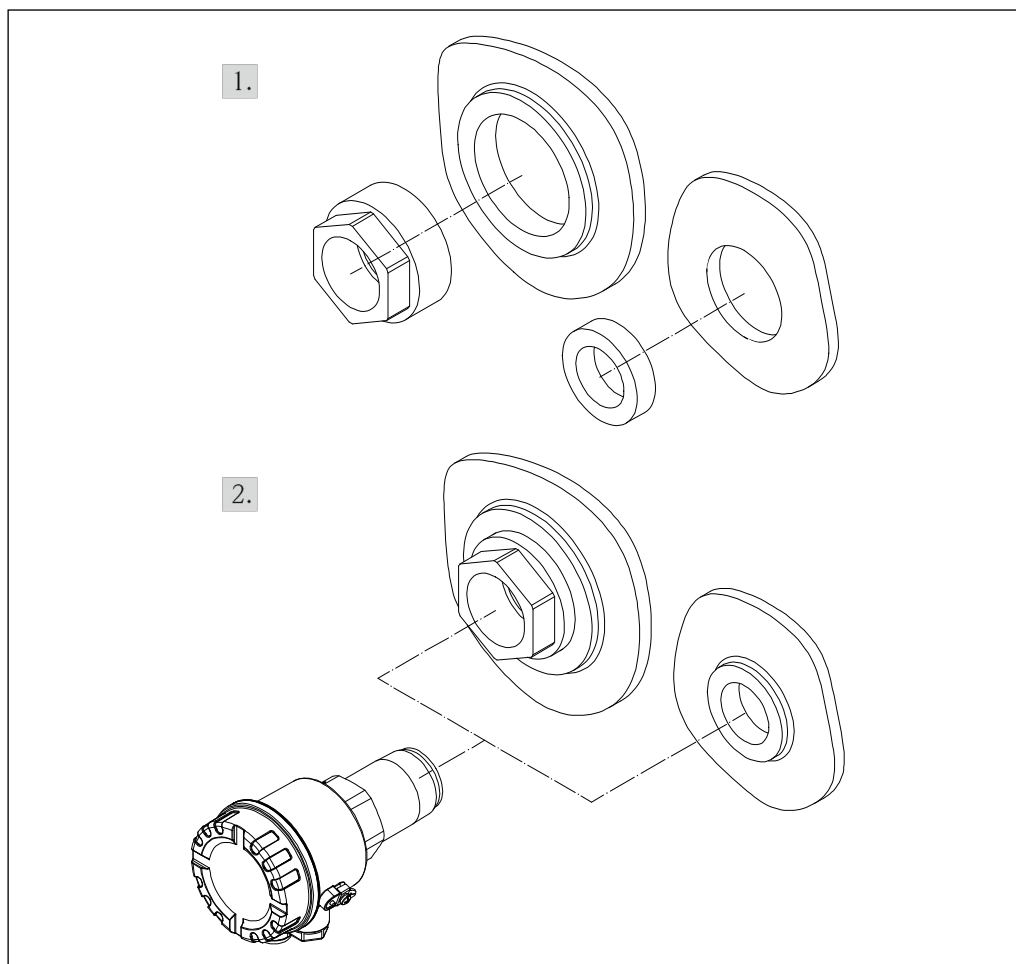
0000000175

## Mounting

### Mounting

The installation is done in two steps:

1. Install the screw-in adapter carefully into the thread on the process, or else position the weld-in adapter precisely and weld it in place
2. Install and arrange the devices of the Soliwave microwave barrier or the Solimotion flow indicator



3 Mounting

0000000176

**i** The general notes on the installation and alignment of process adapters in the technical information of the device to be connected must be observed.

## Ordering information

Detailed ordering information is available from the following sources:

- In the Product Configurator on the Endress+Hauser website: [www.endress.com](http://www.endress.com) → Click "Corporate" → Select your country → Click "Products" → Select the product using the filters and search field → Open product page → The "Configure" button to the right of the product image opens the Product Configurator.
- Endress+Hauser sales center: [www.addresses.endress.com](http://www.addresses.endress.com)

- i** ■ Special versions (dimensions and material) are available on request
- The device connection G 1½ according to ISO 228-1 is only available on weld-in version.

<b>010</b>	<b>Version</b>
A	Weld-in adapter
B	Screw-in adapter
<b>020</b>	<b>Process connection</b>
AAA	Without (Weld-in adapter)
VF2	Thread 2 NPT, ANSI/ASME
VJ2	Thread 3 NPT, ANSI/ASME
VL2	Thread 4 NPT, ANSI/ASME
XG2	Thread R 2, EN 10226
XJ2	Thread R 3, EN 10226
XL2	Thread R 4, EN 10226
<b>030</b>	<b>Material</b>
1	Steel P235GH (1.0345)
2	Stainless steel 316Ti (1.4571)
3	Stainless steel 316L (1.4404)
<b>040</b>	<b>Device connection</b>
A	Thread R 1½ in accordance with EN 10226
B	Thread 1½ NPT in accordance with ANSI/ASME
C	Thread G 1½ in accordance with ISO 228-1

## Optional

<b>580</b>	<b>Test, certificate, declaration</b>
JA	Inspection certificate 3.1, EN 10204 (Material certificate wetted parts)

[www.addresses.endress.com](http://www.addresses.endress.com)

---