

Installation Instructions


Sensor assembly without process connection

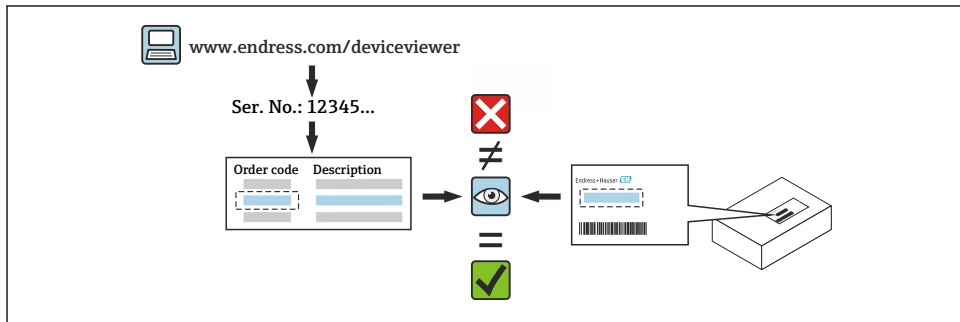
Cerabar PMC51B, PMC71B



1 Intended use

- A defective unit can only be replaced with a functioning unit of the same type.
- Use only original parts from Endress+Hauser.
- In the W@M Device Viewer, check if the spare part is suitable for the existing device.


 In some devices, an overview of spare parts is provided inside the device. If the spare part set is listed in the overview, it is not necessary to check the Device Viewer.



2 Personnel authorized to carry out repairs

Technical staff must comply with the following requirements for repair, mounting, electrical installation and commissioning of the devices:

- Be trained in instrument safety.
- Be familiar with the individual operating conditions of the devices.
- In the case of Ex-certified devices, they must also be trained in explosion protection.

 Technical staff carrying out work are responsible for ensuring that the work is carried out safely and to the required quality standard. They must also guarantee the safety of the device following repair.

3 Safety instructions

- Observe the Operating Instructions for the device.
- Comply with national regulations regarding mounting, electrical installation, commissioning, maintenance and repair.
- Device is live! Risk of fatal injury from electric shock. Open the device only when the device is deenergized.
- For devices intended for use in hazardous locations, please observe the instructions in the Ex documentation (XA).
- In the case of devices in safety-related applications in accordance with IEC 61508 or IEC 61511: Commission in accordance with Operating Instructions after repair.

- Before removing the device: set the process to a safe state and purge the pipe of dangerous process substances.
- Risk of burns from hot surfaces! Before commencing work: allow the system and device to cool down to a touchable temperature.
- In the case of devices in custody transfer, the custody transfer status no longer applies once the seal has been removed.
- Risk of damaging electronic components! Ensure that the working environment is protected against electrostatic discharge.
- After removing the electronics compartment cover: risk of electric shock due to removal of contact protection! Switch the device off before removing internal covers.
- Modifications to the device are not permitted.
- Only open the housing for a short period. Avoid ingress of foreign bodies, moisture or contaminants.
- Replace defective seals only with original seals from Endress+Hauser.
- If threads are damaged or defective, the device must be repaired.
- Do not lubricate threads (e.g. of electronics compartment cover and connection compartment cover).
- If spacing is reduced or the dielectric strength of the device cannot be guaranteed during repair work: Perform a test on completion of the work (e.g. high-voltage test in accordance with the manufacturer's specifications).
- Service connector:
 - Do not connect in potentially explosive atmospheres.
 - Only connect to Endress+Hauser service devices.
- Observe the instructions for transporting and returning the device outlined in the Operating Instructions.



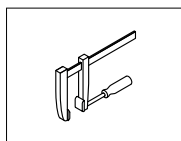
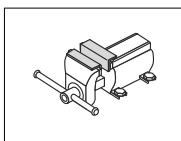
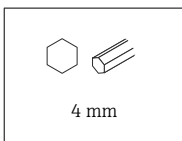
For information on service and spare parts, contact your Endress+Hauser sales center.

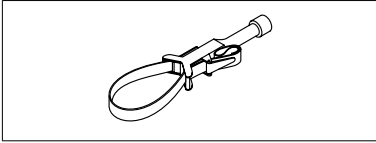
4 Symbols for certain types of Information

 Forbidden

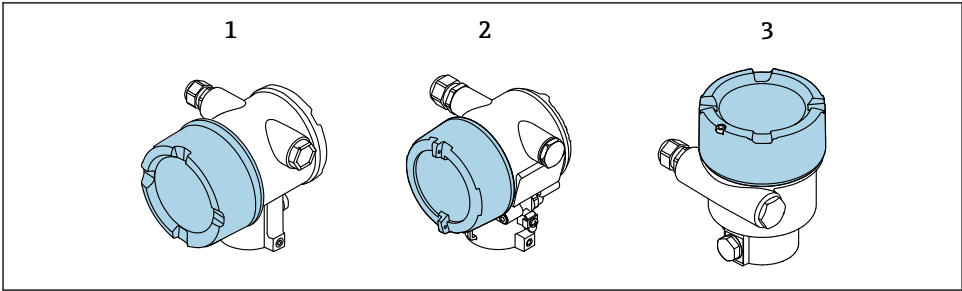
Procedures, processes or actions that are forbidden.

5 Tools list





6 Housing version



- 1 Dual-compartment housing
- 2 Stainless steel dual-compartment housing, precision cast
- 3 Single-compartment housing

7 Installation instructions

NOTICE

After the replacement of a sensor assembly without a process connection, the technical properties of the device may no longer be within the specifications. The device then **measures with reduced accuracy.**

- Take the error factors into account
- Follow the instructions carefully

7.1 Error factors

The error factor depends on the measuring range

100 to 400 mbar (1.5 to 6 psi): Error factor 3

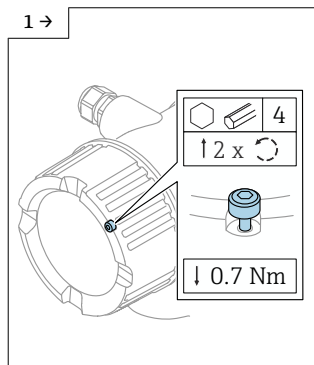
1 to 40 bar (15 to 600 psi): Error factor 2.5

8 Removal

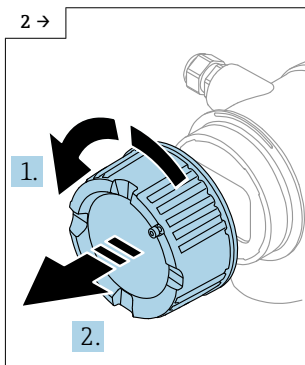
8.1 Dual-compartment housing

8.1.1 Releasing the cover lock and removing the cover

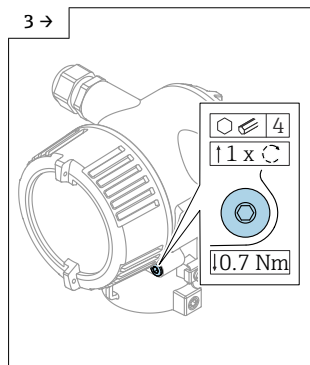
i Pay attention to the tightening torque during installation.



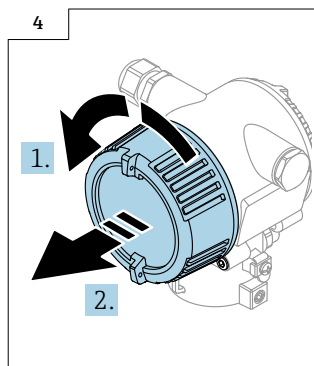
- Optional: cover lock.
- If available: Release the cover securing screw using the Allen key.
- **i** The securing screw must not protrude beyond the lower edge of the cover. Note the position of the securing screw before and while screwing the cover on.



- Unscrew the cover.

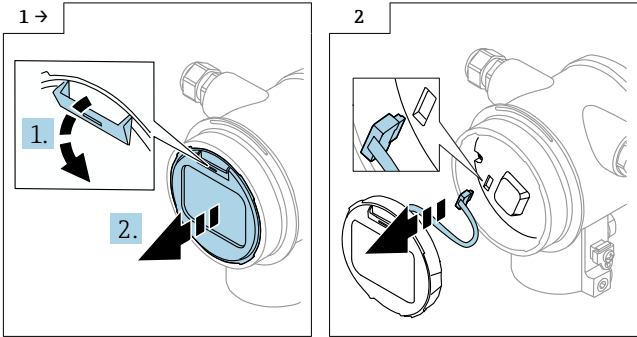


- Optional: cover lock for dual-compartment housing, stainless steel, precision casting.
- Release the tension between the cover and cover securing screw. To do so, turn the cover securing screw in the tightening direction.



- Unscrew the cover.

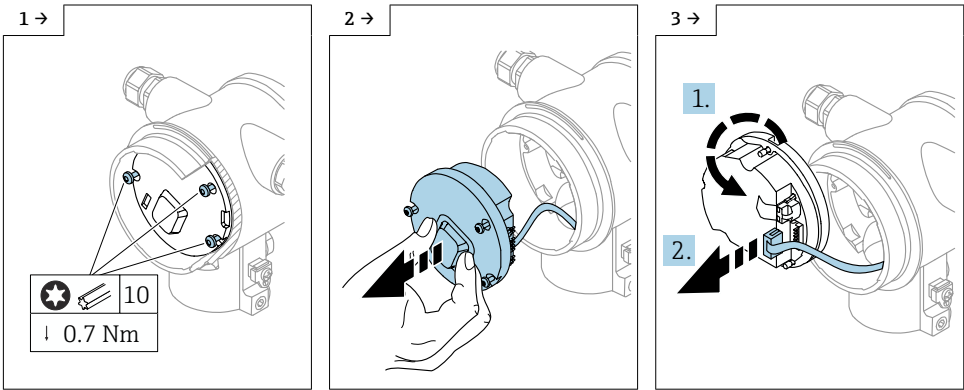
8.1.2 Optional: removing the display

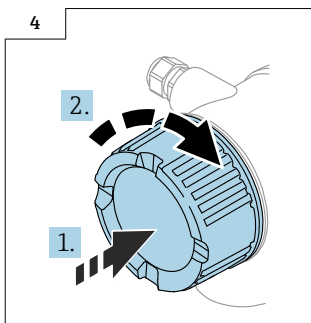


- Press the release mechanism and remove the display module.
- Release the plug connection.

8.1.3 Removing the electronics

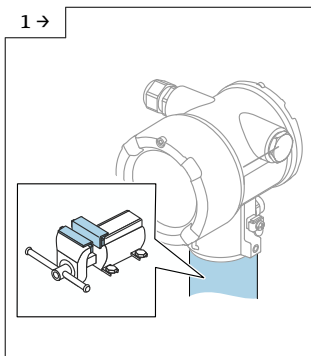
i Pay attention to the tightening torque during installation.



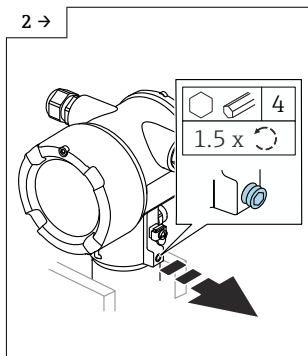


- Ensure protection: Screw the cover firmly back onto the housing.
- If available: Tighten the cover securing screw using the Allen key 0.7 Nm (0.52 lbf ft).

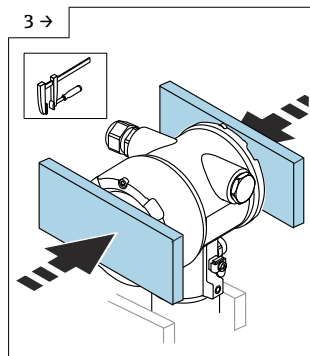
8.1.4 Separating the housing from the sensor assembly

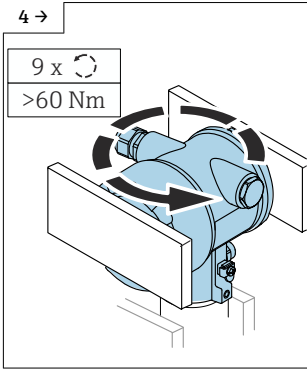


- Protect the sensor assembly and housing from damage. Use a bench vise with braces.

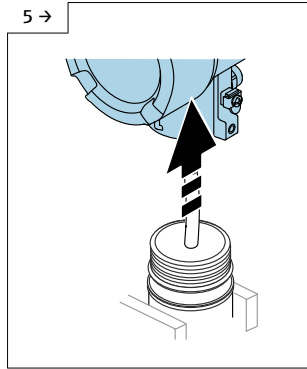


- Release the housing lock.

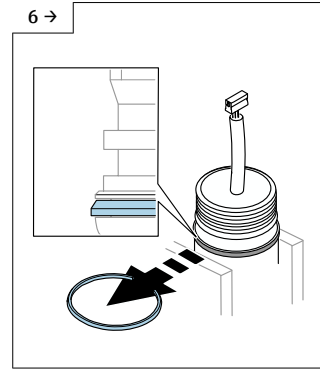




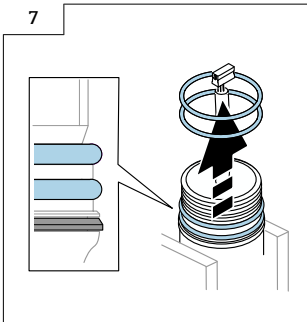
- Using a suitable tool, unscrew the housing by applying significant force (> 60 Nm). This involves applying force several times in and against the screw direction; the snap ring is intentionally destroyed in the process. Do not damage the coating of the housing.



- Carefully remove the housing from the sensor assembly, taking care not to damage the sensor cable.



- Remove the snap ring.

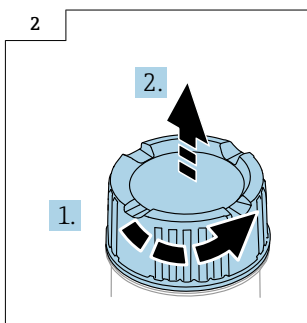
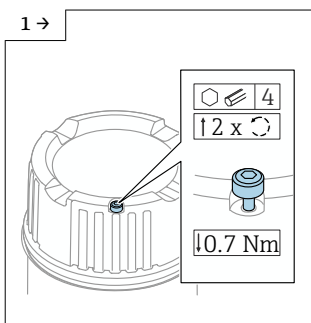


- Remove the O-rings.

8.2 Single-compartment housing

Optional: Release the cover lock, remove the cover and display

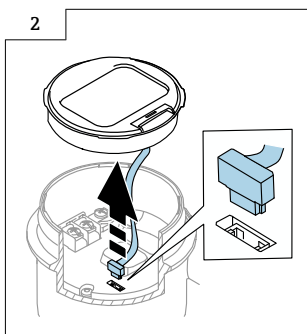
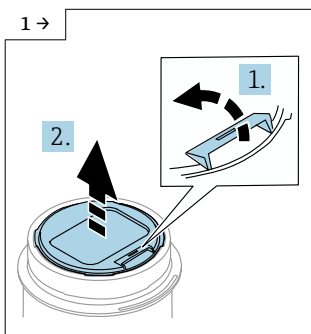
i Pay attention to the tightening torque during installation.



- Optional: cover lock.
- If available: Release the cover securing screw using the Allen key.
- **i** The securing screw must not protrude beyond the lower edge of the cover. Note the position of the securing screw before and while screwing the cover on.

- Unscrew the cover.

8.2.1 Removing the display

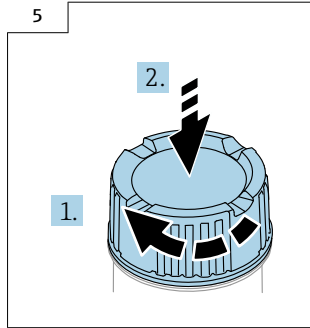
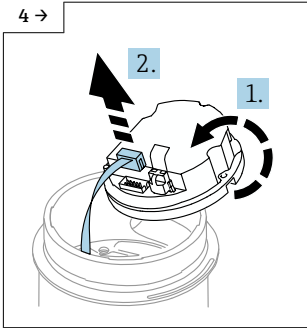
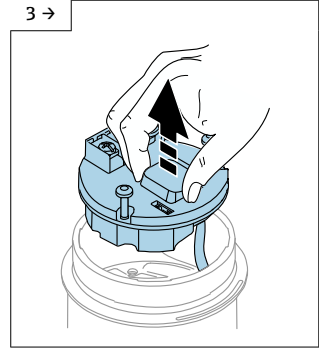
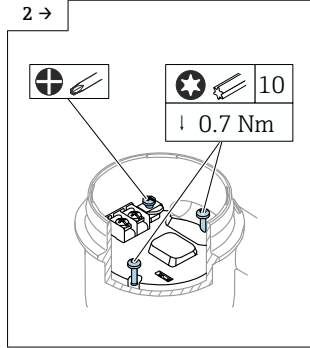
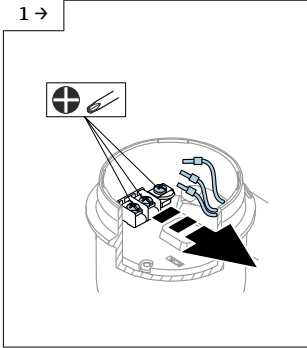


- Press the release mechanism and remove the display module.

- Release the plug connection.

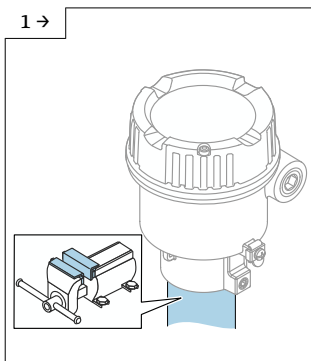
8.2.2 Removing the main electronics

i Pay attention to the tightening torque during installation.

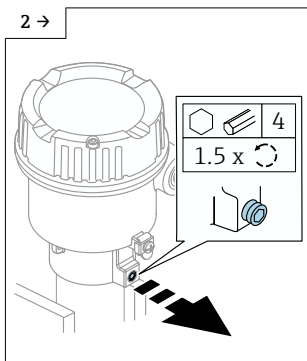


- Ensure protection: Screw the cover firmly back onto the housing.
- If available: Tighten the cover securing screw using the Allen key 0.7 Nm (0.52 lbf ft).

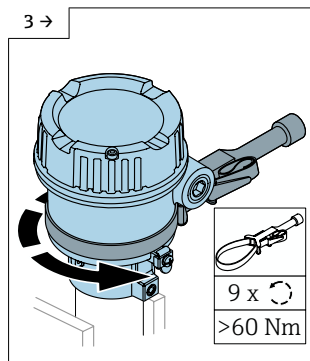
8.2.3 Separating the housing from the sensor assembly



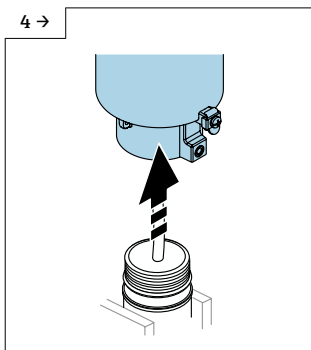
- Protect the sensor assembly and housing from damage. Use a bench vise with braces.



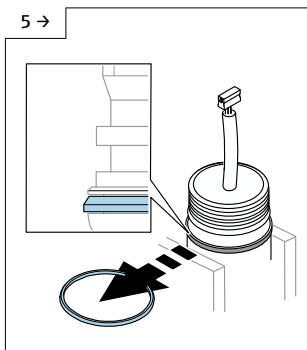
- Release the housing lock.



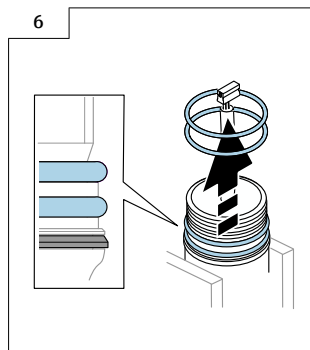
- Using a suitable tool, unscrew the housing by applying significant force (> 60 Nm). Place the gripping position below the cable entry. This involves applying force several times in and against the screw direction; the snap ring is intentionally destroyed in the process. Do not damage the coating of the housing.



- Carefully remove the housing from the sensor assembly, taking care not to damage the sensor cable.




- Remove the snap ring.

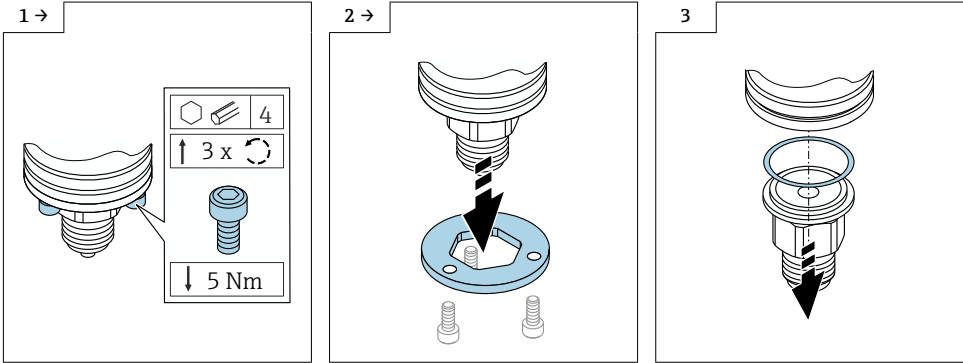


- Remove the O-rings.

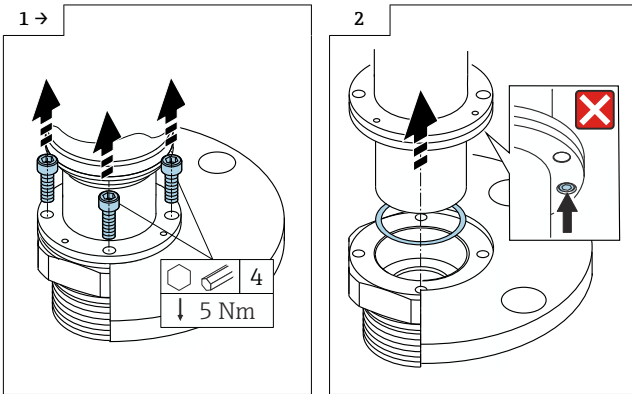
8.3 Removing the sensor assembly

8.3.1 Membrane, internal

 Pay attention to the tightening torque during installation.



8.3.2 Membrane, flush mount



9 Installation

9.1 General installation instructions

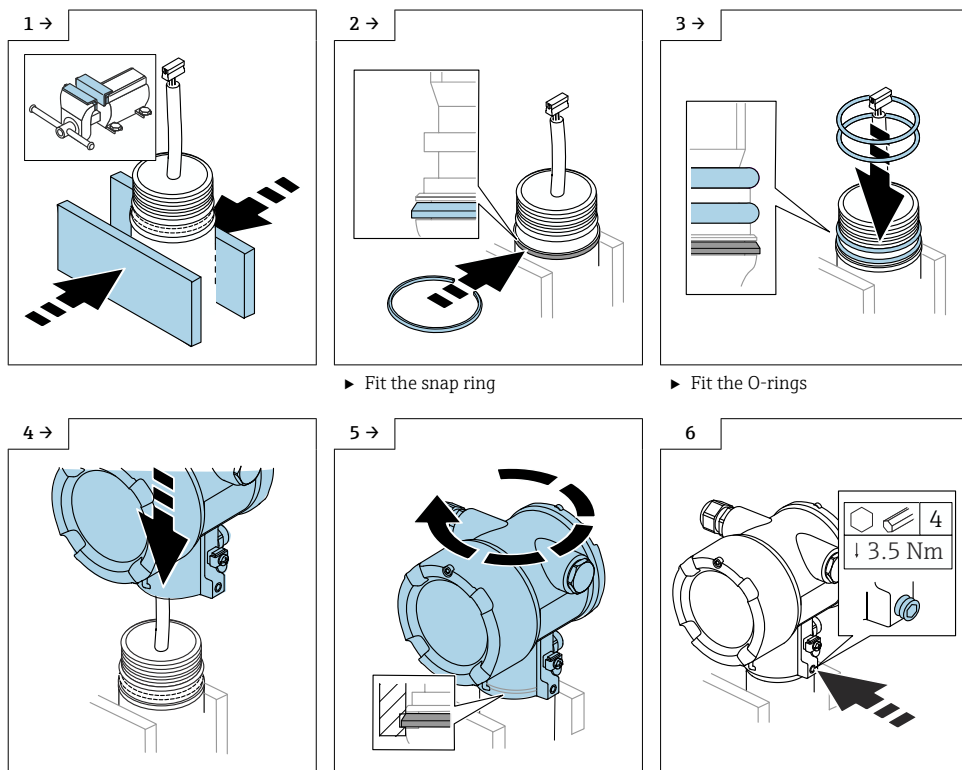
Installation is performed by following the removal procedure in reverse order.

9.2 Special installation instructions

9.2.1 Installing the sensor assembly

The procedure is the same for all housing and sensor types.

Example: dual-compartment housing



NOTICE

After the replacement of the sensor assembly without a process connection, the device cannot be aged like in the manufacturing process.

Deviations may occur in the zero point and span.

- Deviations can be corrected by recalibrating the device.

10 Disposal



If required by the Directive 2012/19/EU on waste electrical and electronic equipment (WEEE), the product is marked with the depicted symbol in order to minimize the disposal of WEEE as unsorted municipal waste. Do not dispose of products bearing this marking as unsorted municipal waste. Instead, return them to the manufacturer for disposal under the applicable conditions.



71719967

www.addresses.endress.com
