

Installation Instructions


Cover, cover seal, cover securing screw

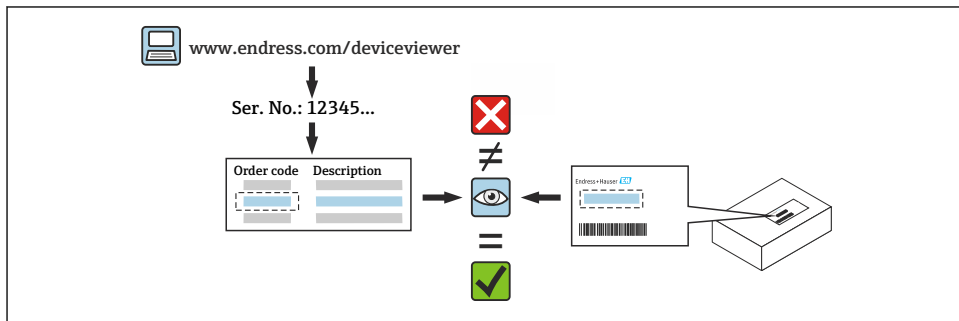
Gammapilot, Liquiphant, Micropilot, Prothermo,
Cerabar, Deltabar, Prowirl L,
Remote display FHX50B



1 Intended use

- A defective unit can only be replaced with a functioning unit of the same type.
- Use only original parts from Endress+Hauser.
- In the W@M Device Viewer, check if the spare part is suitable for the existing device.


 In some devices, an overview of spare parts is provided inside the device. If the spare part set is listed in the overview, it is not necessary to check the Device Viewer.



2 Personnel authorized to carry out repairs

Technical staff must comply with the following requirements for repair, mounting, electrical installation and commissioning of the devices:

- Be trained in instrument safety.
- Be familiar with the individual operating conditions of the devices.
- In the case of Ex-certified devices, they must also be trained in explosion protection.

 Technical staff carrying out work are responsible for ensuring that the work is carried out safely and to the required quality standard. They must also guarantee the safety of the device following repair.

3 Safety instructions

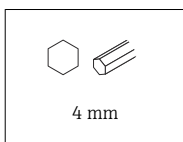
- Observe the Operating Instructions for the device.
- Comply with national regulations governing mounting, electrical installation, commissioning, maintenance and repair procedures.
- For devices intended for use in hazardous locations, please observe the instructions in the Ex documentation (XA).
- In the case of devices in safety-related applications in accordance with IEC 61508 or IEC 61511: Commission in accordance with Operating Instructions after repair.
- Before removing the device: set the process to a safe state and purge the pipe of dangerous process substances.

- Risk of burns from hot surfaces! Before commencing work: allow the system and device to cool down to a touchable temperature.
- Risk of damaging electronic components! Ensure that the working environment is protected against electrostatic discharge.
- Modifications to the device are not permitted.
- Observe the instructions for transporting and returning the device outlined in the Operating Instructions.

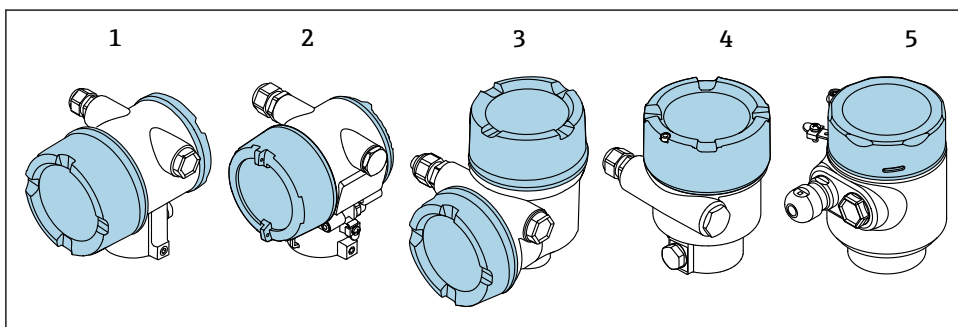


For information on service and spare parts, contact your Endress+Hauser sales center.

4 Tools list



5 Housing version



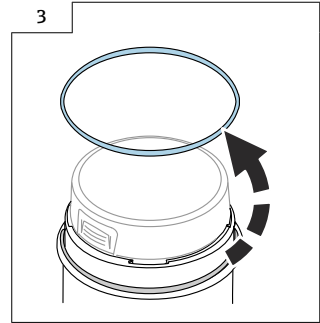
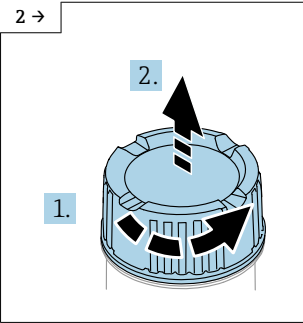
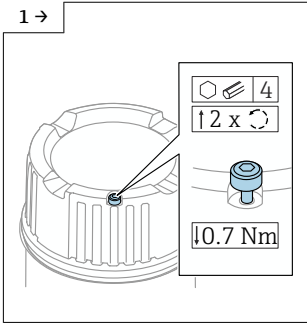
- 1 Dual-compartment housing
- 2 Stainless steel dual-compartment housing, precision cast
- 3 Dual-compartment housing, L-form
- 4 Single-compartment housing
- 5 Single-compartment housing, 316L hygiene

6 Removal

6.1 Single-compartment housing and L-form dual-compartment housing

Releasing the cover securing screw, removing the cover and cover seal

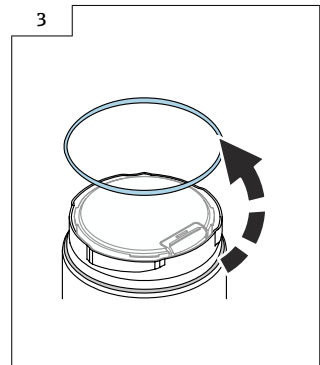
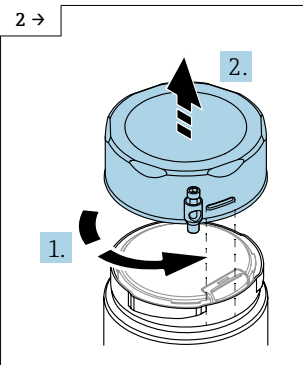
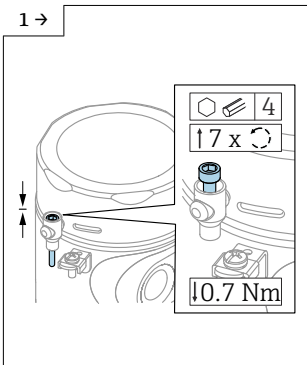
i Pay attention to the tightening torque during installation.



- ▶ Optional: cover lock
- ▶ If available: release the cover lock screw using the Allen key.
- ▶ **i** The securing screw must not protrude beyond the lower edge of the cover (does not apply to single-chamber housing, 316L hygiene). Note the position of the securing screw before and while screwing the cover on.

▶ Unscrew the cover.

▶ Remove the seal.



- ▶ Optional: cover lock on single-compartment housing, 316L hygiene

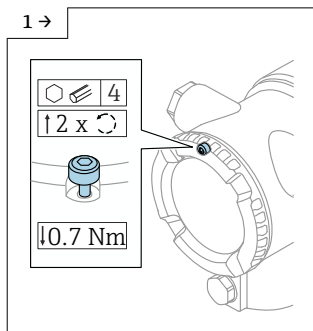
▶ Unscrew and remove the cover.

▶ Remove the seal.

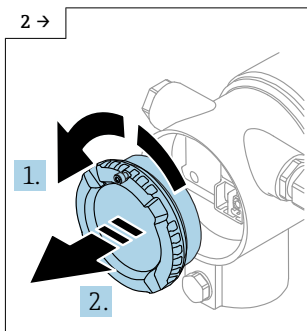
6.2 Dual-compartment housing (not L-form)

Releasing the cover securing screw, removing the cover and cover seal

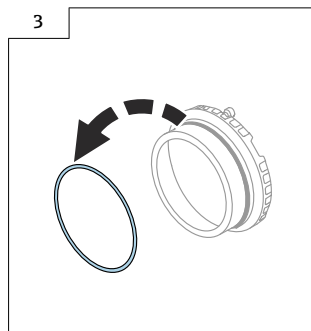
i Pay attention to the tightening torque during installation.



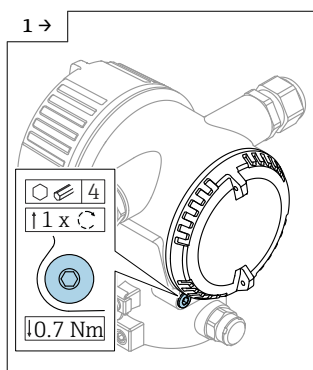
- Optional: cover lock
- If available: release the cover lock screw using the Allen key.
- **i** The securing screw must not protrude beyond the lower edge of the cover. Note the position of the securing screw before and while screwing the cover on.



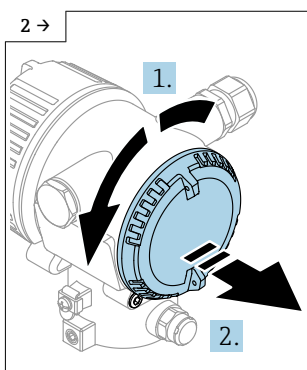
- Unscrew the cover.



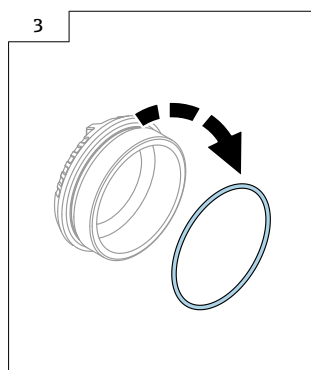
- Remove the cover seal.



- Optional: cover lock for dual-compartment housing, stainless steel, precision casting
- Release the tension between the cover and cover locking screw. Release any tension by turning the cover locking screw in the tightening direction.



- Unscrew the cover.



- Remove the cover seal.

7 Installation

7.1 General installation instructions

Installation is performed by following the removal procedure in reverse order.



71716787

www.addresses.endress.com
