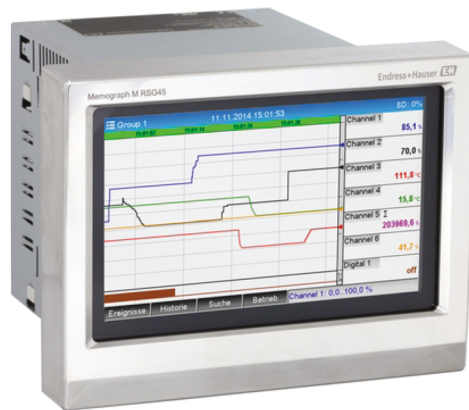


Operator manual

Memograph M RSG45

Digital recorder



Memograph M RSG45 digital recorder

main operator instructions

Log in: Each operator must have a unique username and password to comply with 21 CFR, part 11.

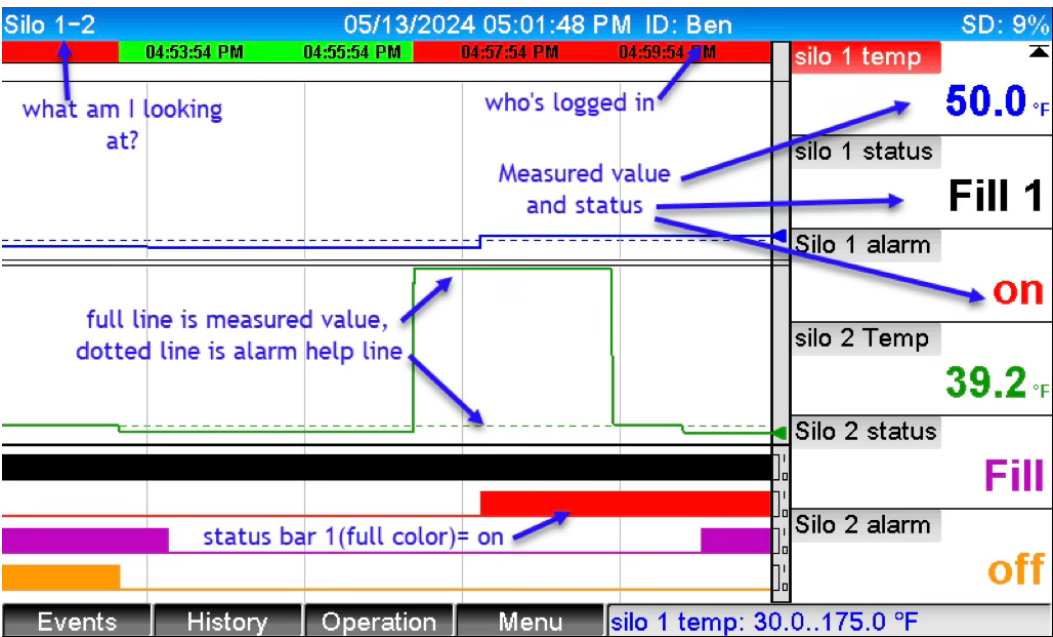


Fig. 1: Definition of information on screen. Measured values are arranged in up to 10 signal groups (screens) Move between screens by swiping left/right.

Navigation buttons

- Esc. – move backward in the menu
- Events - takes you to the event log
- History – used to search older values
- Operation – takes you to the login screen or, when logged in to enter text, select setpoints (if applicable)
- >>>, <<<< move back and forth in history
- OK – accept entry
- Operation (when in “History” mode) - enables time-scaling and scroll speed for past values
- Menu – in main user mode, it’s the same as operations in “Admin” mode, and provides access to programming and adding/deleting users

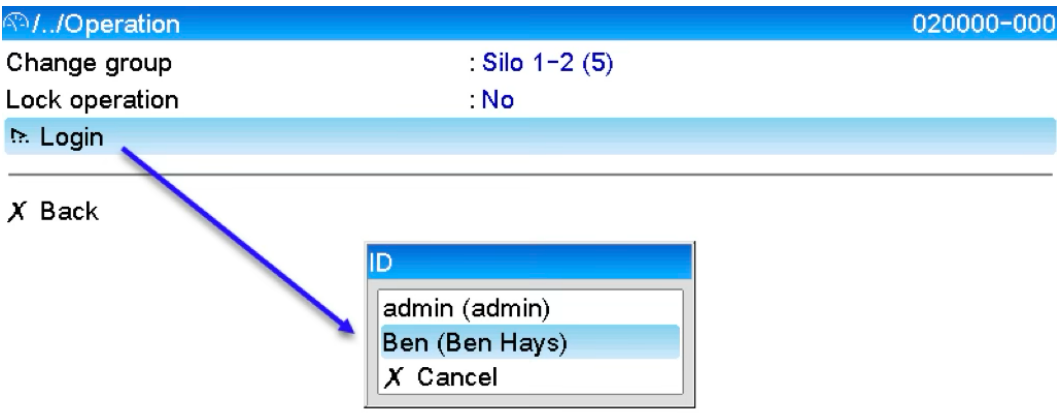


Fig. 2: Login procedure: press “Operations,” scroll to find your login name, then select it.

Fig. 3: Enter password, click checkmark (enter), and acknowledge (OK) in popup, then press Esc.

Alternative login can be accomplished using employee RFID-enabled badges. Simply hold a badge in front of the reader to log in if it's set up by the company administrator.



Fig. 4: To enter the annotation, click "Operations," then from this screen, click "Store Text."

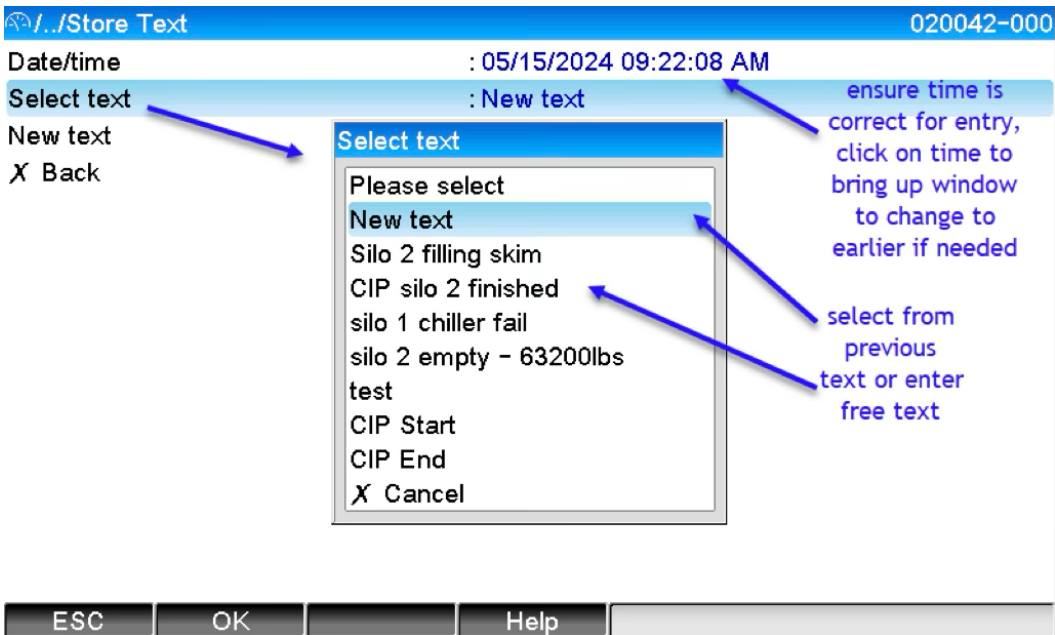


Fig. 5: Enter the free text annotation or select from the drop-down menu.

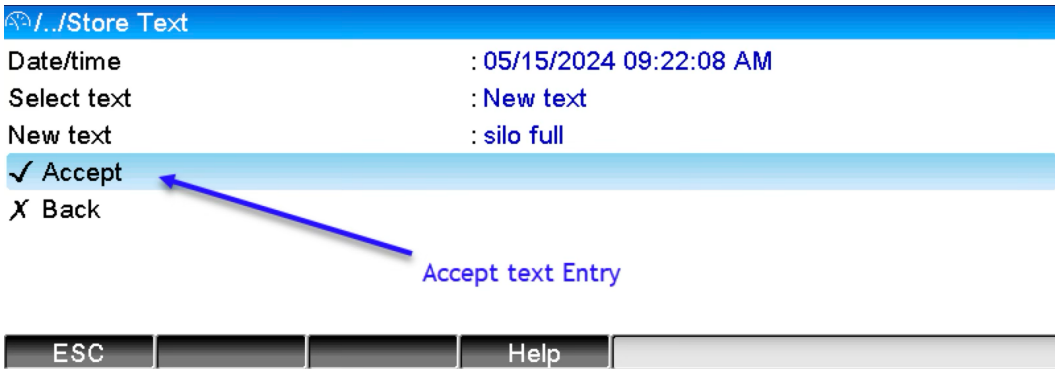


Fig. 6: Accept entry.

There are two methods to search/find earlier events to review or enter annotations: via event log (Events) or scroll through the chart on-screen (History).

Fig. 7: Press “Events,” highlight the event for review or annotation, then click “Go to.” From there, follow the instructions from Figs. 4 to 6.

Fig. 8: Optionally, to filter event logbook, click “Operations” then “Search in Trace” and select desired filters.

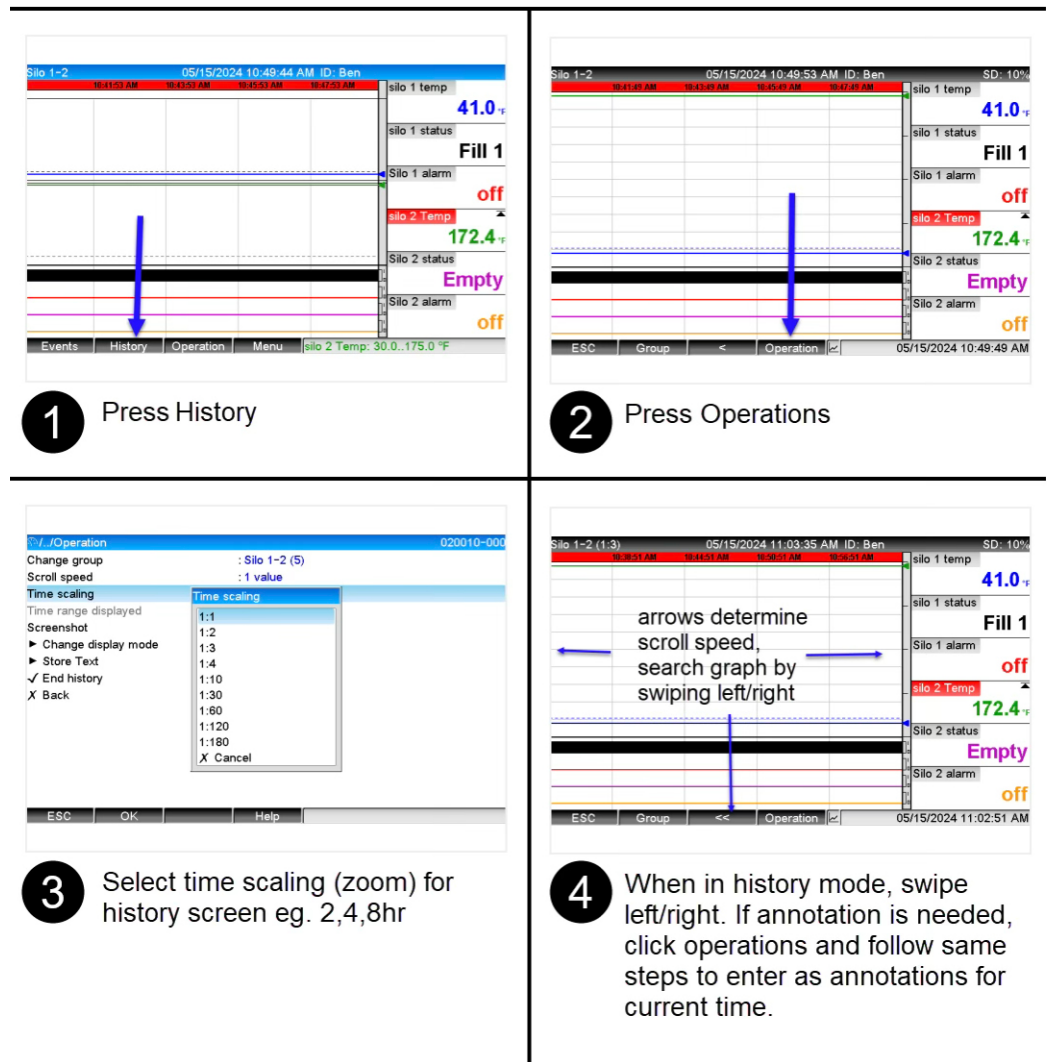


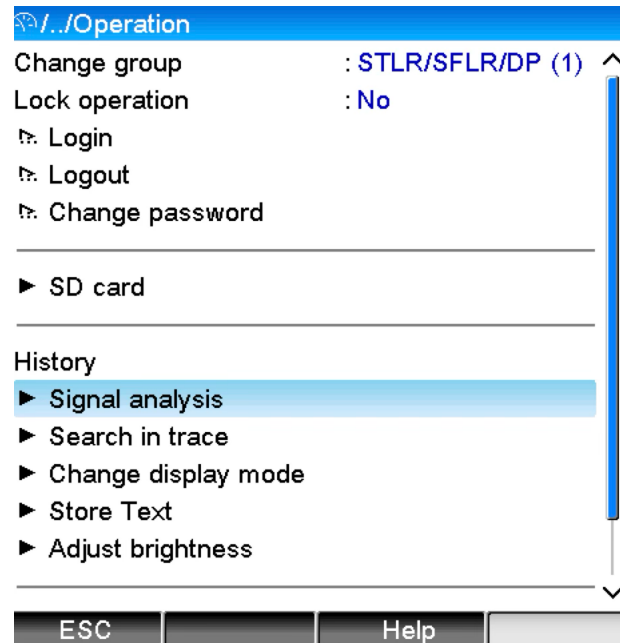
Fig. 9: To search/find via the recorder screen, see that the default screen and scroll speed for the screen is the same as the recording speed. To see longer intervals on the screen, the time-scaling can be adjusted to fit the application. This is selected as described below. Scroll speed <<< can also be selected by value or $\frac{1}{4} \dots 1$ page.

Once the event is identified, note the time, click "Operation" and follow Figs. 4–6.

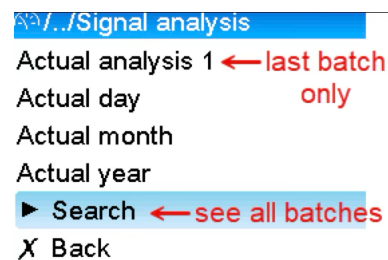
Production Analysis

See batch, daily, weekly or custom analysis.

1. Select "Signal Analysis" under the "Operations" tab.



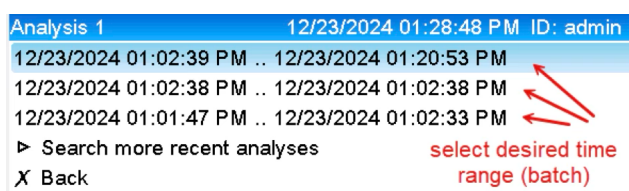
2. Choose a timeframe to view the batch. "Actual" is current running (last batch). For earlier, select "Search."



3. Select "Analysis 1" and "Start search."



4. Select a time frame for batch data.



5. Example of Analysis.

Actual analysis 1		12/21/2024 10:29:05 AM	ID: admin	SD: 14%
12/21/2024 10:15:08 AM .. 12/21/2024 10:29:05 AM (0h13:57)				
Pasteurization T				
Min	:	170.2 °F	(12/21/2024 10:19:21 AM)	
Max	:	172.0 °F	(12/21/2024 10:20:02 AM)	
Average	:	171.5 °F		
Product_Flow				
Min	:	77.5 GPM	(12/21/2024 10:18:38 AM)	
Max	:	82.2 GPM	(12/21/2024 10:15:08 AM)	
Average	:	78.7 GPM		
Quantity	:	1101.3 Gallon		
Total quantity	:	811715.8 Gallon		
Cold Product				
Min	:	39.6 °F	(12/21/2024 10:15:08 AM)	
Max	:	39.6 °F	(12/21/2024 10:15:08 AM)	
Average	:	39.6 °F		
Past Pressure				
Min	:	67.5 PSI	(12/21/2024 10:18:16 AM)	
Max	:	71.5 PSI	(12/21/2024 10:16:58 AM)	
Average	:	67.8 PSI		
Raw Pressure				
Min	:	51.3 PSI	(12/21/2024 10:17:14 AM)	
Max	:	64.9 PSI	(12/21/2024 10:17:21 AM)	
Average	:	64.5 PSI		
Set Point Temp				
Min	:	168.0 °F	(12/21/2024 10:15:08 AM)	
Max	:	168.0 °F	(12/21/2024 10:15:08 AM)	
Average	:	168.0 °F		
Diff Pressure				
Min	:	2.6 PSI	(12/21/2024 10:18:16 AM)	
Max	:	20.2 PSI	(12/21/2024 10:17:14 AM)	
Average	:	3.3 PSI		
DP set point				
Min	:	1.0 PSI	(12/21/2024 10:15:08 AM)	
Max	:	1.0 PSI	(12/21/2024 10:15:08 AM)	
Average	:	1.0 PSI		
X Back				

Note: If flow totalizer is used, the total quantity can be reset by administrator under signal analysis in set-up menu (program mode).

www.addresses.endress.com
