

Operating Instructions

Deltabar PMD75B

Differential pressure measurement
PROFINET over Ethernet-APL





A0023555

- Make sure the document is stored in a safe place such that it is always available when working on or with the device
- Avoid danger to individuals or the facility: read the "Basic safety instructions" section carefully, as well as all other safety instructions in the document that are specific to working procedures

The manufacturer reserves the right to modify technical data without prior notice. The Endress+Hauser sales organization will supply you with current information and updates to these instructions.

Table of contents

1	About this document	5	8.2	Device master file (GSD)	43
1.1	Document function	5	8.3	Cyclic data transmission	45
1.2	Symbols	5	8.4	System redundancy S2	47
1.3	List of abbreviations	7	9	Commissioning	48
1.4	Documentation	7	9.1	Preparatory steps	48
1.5	Registered trademarks	7	9.2	Function check	48
2	Basic safety requirements	9	9.3	Connecting via FieldCare and DeviceCare	48
2.1	Requirements for the personnel	9	9.4	Hardware settings	49
2.2	Intended use	9	9.5	Setting the device name	49
2.3	Workplace safety	9	9.6	Configuring the communication parameters via the software	50
2.4	Operational safety	9	9.7	Setting the operating language	50
2.5	Product safety	10	9.8	Configuring the device	51
2.6	IT security	10	9.9	"Simulation" submenu	58
2.7	Device-specific IT security	10	9.10	Protecting settings from unauthorized access	59
3	Product description	12	10	Operation	61
3.1	Product design	12	10.1	Reading off the device locking status	61
4	Incoming acceptance and product identification	13	10.2	Reading off measured values	61
4.1	Incoming acceptance	13	10.3	Adapting the device to process conditions	61
4.2	Product identification	13	11	Diagnostics and troubleshooting	63
4.3	Storage and transport	14	11.1	General troubleshooting	63
5	Installation	15	11.2	Diagnostics information via LED	66
5.1	Installation requirements	15	11.3	Diagnostic formation on local display	67
5.2	Installing the device	17	11.4	Diagnostic information in the Web browser	68
5.3	Post-mounting check	25	11.5	Diagnostic list	69
6	Electrical connection	27	11.6	Event logbook	71
6.1	Connection requirements	27	11.7	Resetting the device	73
6.2	Connecting the device	28	11.8	Firmware history	74
6.3	Ensuring the degree of protection	31	12	Maintenance	75
6.4	Post-connection check	32	12.1	Maintenance work	75
7	Operation options	33	13	Repair	76
7.1	Overview of operation options	33	13.1	General information	76
7.2	Operating keys and DIP switches on the electronic insert	33	13.2	Spare parts	76
7.3	Structure and function of the operating menu	33	13.3	Replacement	76
7.4	local display	34	13.4	Return	78
7.5	Access to operating menu via web browser	37	13.5	Disposal	78
7.6	Access to the operating menu via the operating tool	41	14	Accessories	79
7.7	HistoROM	42	14.1	Device-specific accessories	79
8	System integration	43	14.2	Device Viewer	79
8.1	Overview of device description files	43	15	Technical data	80
			15.1	Input	80
			15.2	Output	84
			15.3	Environment	87

15.4 Process 90

Index 94

1 About this document

1.1 Document function

These Operating Instructions contain all the information that is required in various phases of the life cycle of the device: from product identification, incoming acceptance and storage, to mounting, connection, operation and commissioning through to troubleshooting, maintenance and disposal.

1.2 Symbols

1.2.1 Warning symbols



This symbol alerts you to a dangerous situation. Failure to avoid this situation will result in serious or fatal injury.



This symbol alerts you to a potentially dangerous situation. Failure to avoid this situation can result in serious or fatal injury.



This symbol alerts you to a potentially dangerous situation. Failure to avoid this situation can result in minor or medium injury.



This symbol alerts you to a potentially harmful situation. Failure to avoid this situation can result in damage to the product or something in its vicinity.

1.2.2 Electrical symbols

Ground connection:

Terminal for connection to the grounding system.


1.2.3 Symbols for certain types of Information

Permitted:


Procedures, processes or actions that are permitted.

Forbidden:

Procedures, processes or actions that are forbidden.

Additional information: 

Reference to documentation: 

Reference to page: 

Series of steps: [1.](#), [2.](#), [3.](#)

Result of an individual step: 

1.2.4 Symbols in graphics

Item numbers: 1, 2, 3 ...

Series of steps: [1.](#), [2.](#), [3.](#)

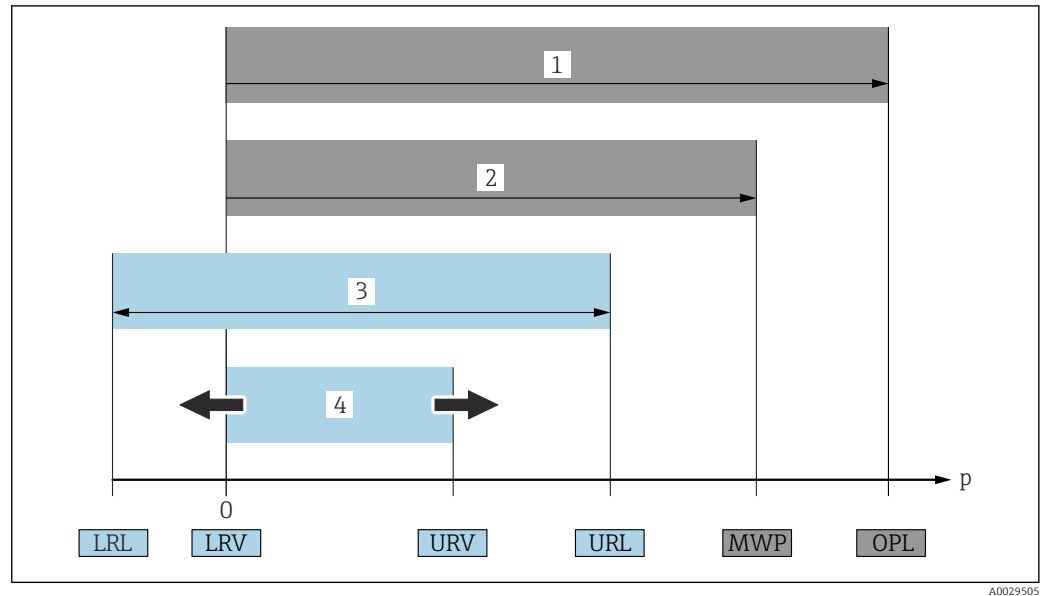
Views: A, B, C, ...

1.2.5 Symbols on the device

Safety instructions:  → 

Observe the safety instructions contained in the associated Operating Instructions.

1.3 List of abbreviations



- 1 OPL: The OPL (over pressure limit = measuring cell overpressure limit) for the device depends on the lowest-rated element, with regard to pressure, of the selected components, i.e. the process connection must be taken into consideration in addition to the measuring cell. Observe pressure-temperature dependency. OPL (Over Pressure Limit) is a test pressure.
 - 2 MWP: The MWP (maximum working pressure) for the measuring cells depends on the lowest-rated element, with regard to pressure, of the selected components, i.e. the process connection also has to be taken into consideration besides the measuring cell. Observe pressure-temperature dependency. The maximum working pressure may be applied at the device for an unlimited period of time. The maximum working pressure can be found on the nameplate.
 - 3 The maximum measuring range corresponds to the span between the LRL and URL. This measuring range is equivalent to the maximum span that can be calibrated/adjusted.
 - 4 The calibrated/adjusted span corresponds to the span between the LRV and URV. Factory setting: 0 to URL. Other calibrated spans can be ordered as customized spans.
- p Pressure
 LRL Lower range limit
 URL Upper range limit
 LRV Lower range value
 URV Upper range value
 TD Turn down Example - see the following section.

1.4 Documentation

All available documents can be downloaded using:

- the serial number of the device (see cover page for description) or
- the data matrix code of the device (see cover page for description) or
- the "Downloads" area of the website www.endress.com

1.4.1 Supplementary device-dependent documentation

Additional documents are supplied depending on the device version ordered: Always comply strictly with the instructions in the supplementary documentation. The supplementary documentation is an integral part of the device documentation.

1.5 Registered trademarks

PROFINET®

Registered trademark of the PROFIBUS User Organization, Karlsruhe, Germany

Bluetooth®

The Bluetooth® wordmark and logos are registered trademarks of Bluetooth SIG, Inc. and any use of these trademarks by Endress+Hauser is licensed. Other trademarks and trade names are those of their respective owners.

Apple®

Apple, the Apple logo, iPhone, and iPod touch are trademarks of Apple Inc., registered in the U.S. and other countries. App Store is a service mark of Apple Inc.

Android®

Android, Google Play and the Google Play logo are trademarks of Google Inc.

2 Basic safety requirements

2.1 Requirements for the personnel

The personnel for installation, commissioning, diagnostics and maintenance must fulfill the following requirements:

- ▶ Trained, qualified specialists must have a relevant qualification for this specific function and task
- ▶ Are authorized by the plant owner/operator
- ▶ Are familiar with federal/national regulations
- ▶ Before beginning work, the specialist staff must have read and understood the instructions in the Operating Instructions and supplementary documentation as well as in the certificates (depending on the application)
- ▶ Follow instructions and comply with conditions

The operating personnel must fulfill the following requirements:

- ▶ Being instructed and authorized according to the requirements of the task by the facility's owner-operator
- ▶ Following the instructions in these Operating Instructions

2.2 Intended use

The Deltabar is a differential pressure transmitter for measuring pressure, flow, level and differential pressure.

2.2.1 Incorrect use

The manufacturer is not liable for damage caused by improper or non-intended use.

Verification for borderline cases:

- ▶ For special fluids and fluids for cleaning, Endress+Hauser is glad to provide assistance in verifying the corrosion resistance of fluid-wetted materials, but does not accept any warranty or liability.

2.3 Workplace safety

When working on and with the device:

- ▶ Wear the required personal protective equipment according to federal/national regulations.
- ▶ Switch off the supply voltage before connecting the device.

2.4 Operational safety

Risk of injury!

- ▶ Operate the device only if it is in proper technical condition, free from errors and faults.
- ▶ The operator is responsible for the interference-free operation of the device.

Modifications to the device

Unauthorized modifications to the device are not permitted and can lead to unforeseeable dangers:

- ▶ If, despite this, modifications are required, consult with Endress+Hauser.

Repair

To ensure continued operational safety and reliability:

- ▶ Carry out repairs on the device only if they are expressly permitted.
- ▶ Observe federal/national regulations pertaining to the repair of an electrical device.

- Use original spare parts and accessories from Endress+Hauser only.

Hazardous area

To eliminate the risk of danger to persons or the facility when the device is used in the approval-related area (e.g. explosion protection, pressure equipment safety):

- Check the nameplate to verify if the device ordered can be put to its intended use in the approval-related area.
- Observe the specifications in the separate supplementary documentation that is an integral part of these Instructions.

2.5 Product safety

This device is designed in accordance with good engineering practice to meet state-of-the-art safety requirements, has been tested, and left the factory in a condition in which it is safe to operate.

It meets general safety standards and legal requirements. It also complies with the EC directives listed in the device-specific EC Declaration of Conformity. Endress+Hauser confirms this by affixing the CE mark to the device.

2.6 IT security

Endress+Hauser can only provide a warranty if the device is installed and used as described in the Operating Instructions. The device is equipped with security mechanisms to protect it against any inadvertent changes to the device settings. IT security measures in line with operators' security standards and designed to provide additional protection for the device and device data transfer must be implemented by the operators themselves.

2.7 Device-specific IT security

The device offers specific functions to support protective measures by the operator. These functions can be configured by the user and guarantee greater in-operation safety if used correctly. An overview of the most important functions is provided in the following section:

- Write protection via hardware write protection switch
- Access code to change user role (applies to operation via display, Bluetooth or FieldCare, DeviceCare, Asset Management Tools (e.g. AMS, PDM and web server))

Function/interface	Factory setting	Recommendation
Access code (also applies to web server login or FieldCare connection)	Not enabled (0000)	Assign a customized access code during commissioning.
Web server	Enabled	On an individual basis following risk assessment.
Service interface (CDI)	Enabled	On an individual basis following risk assessment.
Write protection via hardware write protection switch	Not enabled	On an individual basis following risk assessment.

2.7.1 Protecting access via a password

Different passwords are available to protect write access to the parameters of the device.

Protect write access to the parameters of the device via the local display, web browser or operating tool (e.g. FieldCare, DeviceCare). Access authorization is clearly regulated through the use of a user-specific access code.

User-specific access code

Write access to the parameters of the device via the local display, web browser or operating tool (e.g. FieldCare, DeviceCare) can be protected using the editable, user-specific access code.

When delivered, the device does not have an access code and this code corresponds to 0000 (open).

General notes on the use of passwords

- During commissioning, change the access code used when the device was delivered
- When defining and managing the access code, comply with the general rules for the generation of a secure password
- The user is responsible for managing the access code and for using the code with due care
- If the password is lost: "Resetting the device" section

2.7.2 Access via web server

Thanks to the integrated web server, the device can be operated and configured using a web browser and via PROFINET over Ethernet-APL. In addition to the measured values, status information on the device is displayed and can be used to monitor device health. Furthermore the device data can be managed and the network parameters can be configured.

Access to the network is required for the PROFINET over Ethernet-APL connection.

Supported functions

Data exchange between the operating unit (such as a notebook, for example,) and measuring instrument:

- Export parameter settings (PDF file, create documentation of the measuring point configuration)
- Export the Heartbeat Technology verification report (PDF file, only available with the "Heartbeat Verification" application package)
- Download driver (GSDML) for system integration

The web server is enabled when the device is delivered. The web server can be disabled via the **Web server functionality** parameter if necessary (e.g. after commissioning).

The device and status information can be hidden on the login page. This prevents unauthorized access to the information.

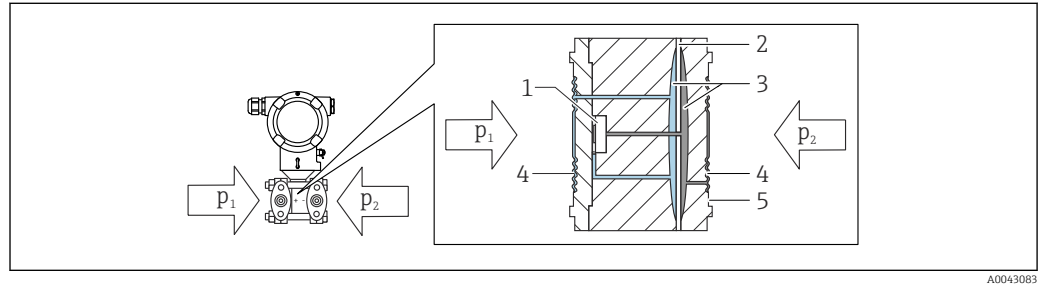


For detailed information on device parameters, see:
"Description of Device Parameters" document

3 Product description

3.1 Product design

3.1.1 Equipment architecture



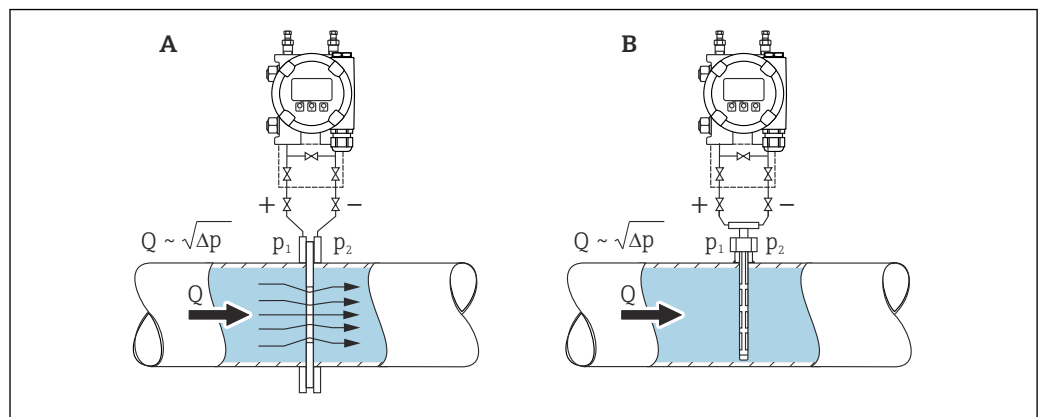
A0043083

- 1 Measuring element
- 2 Middle diaphragm
- 3 Fill fluid
- 4 Membrane
- 5 Seal
- p_1 Pressure 1
- p_2 Pressure 2

The membrane is deflected on both sides by the pressures that are applied. A fill fluid transfers the pressure to a side of the measuring element where a resistance bridge is located (semiconductor technology). The change in the bridge output voltage, which depends on the differential pressure, is measured and processed further.

3.1.2 Flow measurement

Flow measurement with Deltabar and differential pressure sensor:



A0038340

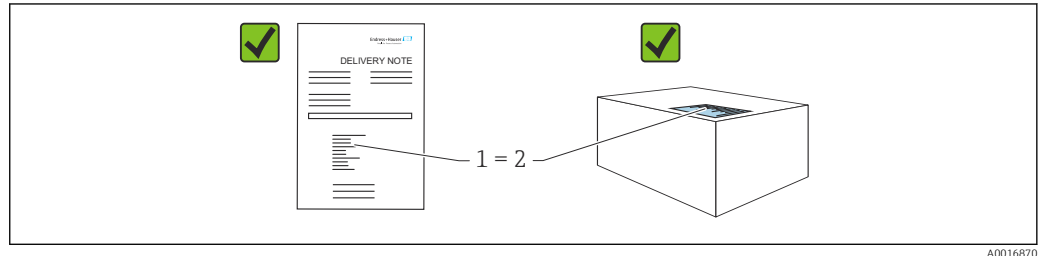
- A Orifice plate
- B Pitot tube
- Q Flow
- Δp Differential pressure, $\Delta p = p_1 - p_2$

Advantages:

- A specific unit is defined
- With the **Low flow cut off** parameter, positive zero return can be configured in the lower measuring range.


4 Incoming acceptance and product identification

4.1 Incoming acceptance



A0016870

- Is the order code on the delivery note (1) identical to the order code on the product sticker (2)?
- Are the goods undamaged?
- Do the data on the nameplate correspond to the order specifications and the delivery note?
- Is the documentation available?
- If required (see nameplate): are the Safety Instructions (XA) provided?

 If you can answer "no" to any of these questions, please contact Endress+Hauser.


4.1.1 Scope of delivery

The scope of delivery comprises:

- Device
- Optional accessories

Accompanying documentation:

- Brief Operating Instructions
- Final inspection report
- Additional Safety Instructions for devices with approvals (e.g. ATEX, IECEx, NEPSI, etc.)
- Optional: factory calibration form, test certificates

 The Operating Instructions are available on the Internet at:

www.endress.com → Download

4.2 Product identification

The following options are available for identification of the device:

- Nameplate specifications
- Order code with breakdown of the device features on the delivery note
- Enter the serial numbers from the nameplates in *Device Viewer* (www.endress.com/deviceviewer): all the information about the device is displayed.

4.2.1 Manufacturer address

Endress+Hauser SE+Co. KG
Hauptstraße 1
79689 Maulburg, Germany
Place of manufacture: See nameplate.

4.2.2 Nameplate

Different nameplates are used depending on the device version.

The nameplates contain the following information:

- Manufacturer name and device name
- Address of the certificate holder and country of manufacture
- Order code and serial number
- Technical data
- Approval-specific information

Compare the data on the nameplate with your order.

4.3 Storage and transport

4.3.1 Storage conditions

- Use the original packaging
- Store the device in clean and dry conditions and protect from damage caused by shocks

Storage temperature range

See Technical Information.

4.3.2 Transporting the product to the measuring point

WARNING

Incorrect transport!

Housing and membrane may become damaged, and there is a risk of injury!

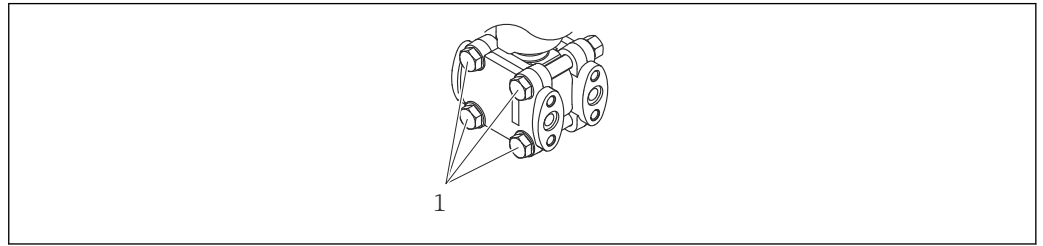
- Transport the device to the measuring point in the original packaging.

5 Installation

NOTICE

The device can be damaged if handled incorrectly!

- ▶ The removal of the screws with item number (1) is not permissible under any circumstances and will void the warranty.



A0025336

5.1 Installation requirements

5.1.1 General instructions

- Do not clean or touch the membrane with hard and/or pointed objects.
- Do not remove the protection on the membrane until just before installation.

Always firmly tighten the housing cover and the cable entries.

1. Counter-tighten the cable entries.
2. Tighten the coupling nut.

5.1.2 Installation instructions

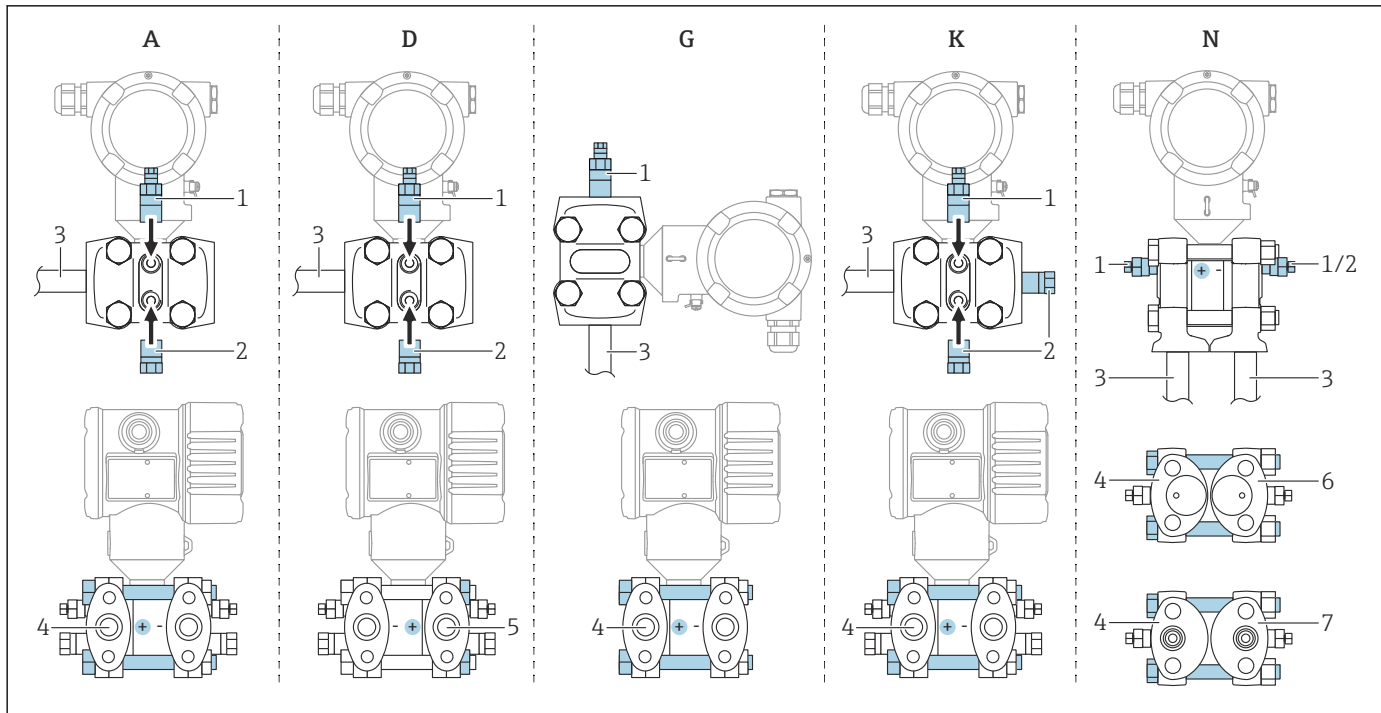
- To ensure optimal readability of the local display, align the housing and local display.
- Endress+Hauser offers a mounting bracket for installing the device on pipes or walls.
- For measurements in media containing solids (e.g. dirty liquids), it makes sense to install separators and drain valves.
- Using a manifold allows for easy commissioning, installation and maintenance without interrupting the process.
- When installing the device, establishing the electrical connection and during operation: prevent moisture from entering the housing.
- Point the cable and connector downwards where possible to prevent moisture from entering (e.g. rain or condensation water).

5.1.3 Installing pressure piping

- For recommendations for routing pressure piping, refer to DIN 19210 "Differential pressure piping for flow measurement devices" or the corresponding national or international standards
- When routing the pressure piping outdoors, ensure sufficient anti-freeze protection, e.g. by using pipe heat tracing
- Install the pressure piping with a monotonic gradient of at least 10%

5.1.4 Orientation

The installation depends on how the pressure piping is connected.



A0038688

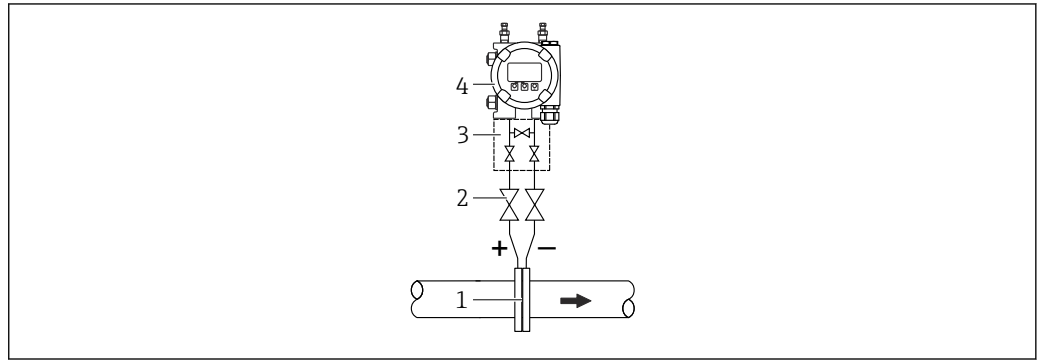
1 A, D, G, K, N: order options

- A Horizontal pressure piping, left side high pressure (screw head side), with side vent. Thread on one side and lateral thread for horizontal pressure piping.
- D Horizontal pressure piping, right side high pressure (screw nuts side), with side vent. Thread on one side and lateral thread for horizontal pressure piping.
- G Vertical pressure piping, left or right side high pressure (screw head side), with vent. Thread on each side for vertical pressure piping.
- K Universal side flange, left or right side high pressure (screw head side), with vent. Thread on each side and lateral thread for universal mounting.
- N Process connection at bottom, left side high pressure (screw head side), vent. Thread on each side and lateral thread for mounting on existing manifolds.
- 1 Vent valve
- 2 Drain plug
- 3 Pressure piping
- 4 High pressure side (screw head side)
- 5 High pressure side (screw nuts side)
- 6 Coplanar-compatible, view from below
- 7 IEC upright, view from below

5.2 Installing the device

5.2.1 Flow measurement

Flow measurement in gases

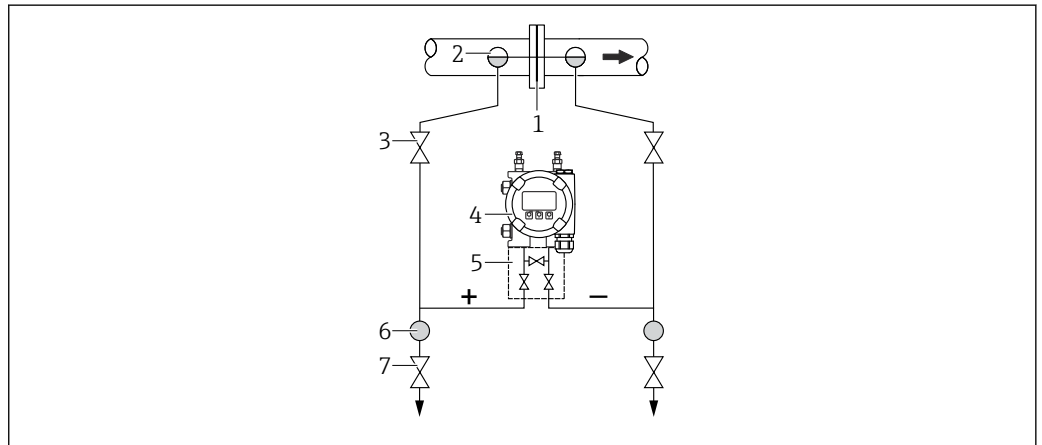


A0038211

- 1 Orifice plate or pitot tube
- 2 Shutoff valves
- 3 Three-valve manifold
- 4 Device

Mount the device above the measuring point so that condensate can drain into the process pipe.

Flow measurement in vapors

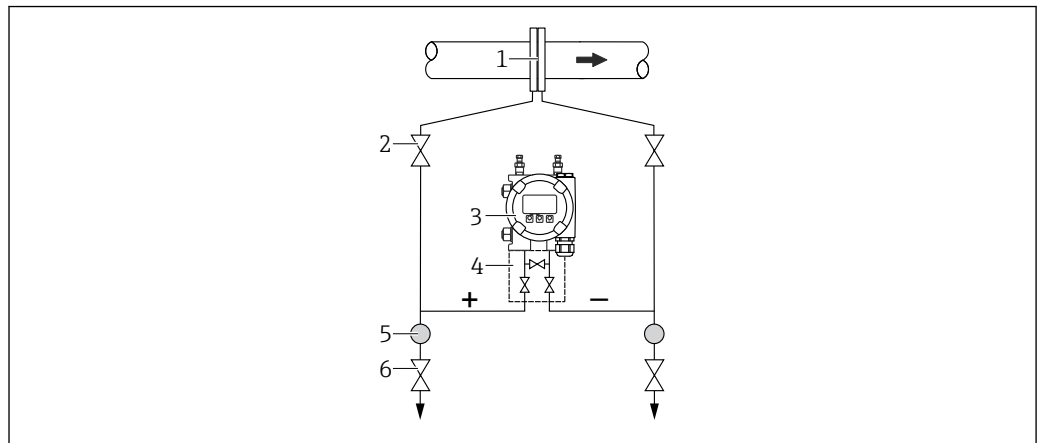


A0038212

- 1 Orifice plate or pitot tube
- 2 Condensate traps
- 3 Shutoff valves
- 4 Device
- 5 Three-valve manifold
- 6 Separator
- 7 Drain valves

- Mount the device below the measuring point
- Mount the condensate traps at the same height as the tapping points and at the same distance to the device
- Prior to commissioning, fill the piping to the height of the condensate traps

Flow measurement in liquids



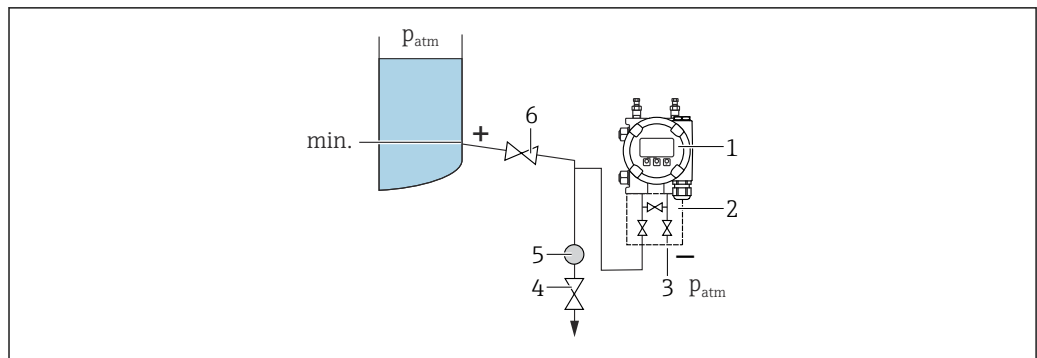
A0038213

- 1 Orifice plate or pitot tube
- 2 Shutoff valves
- 3 Device
- 4 Three-valve manifold
- 5 Separator
- 6 Drain valves

- Mount the device below the measuring point so that the piping is always filled with liquid and gas bubbles can run back into the process pipe
- When measuring in media with solid parts, such as dirty liquids, installing separators and drain valves is useful for capturing and removing sediment

5.2.2 Level measurement

Level measurement in open vessels

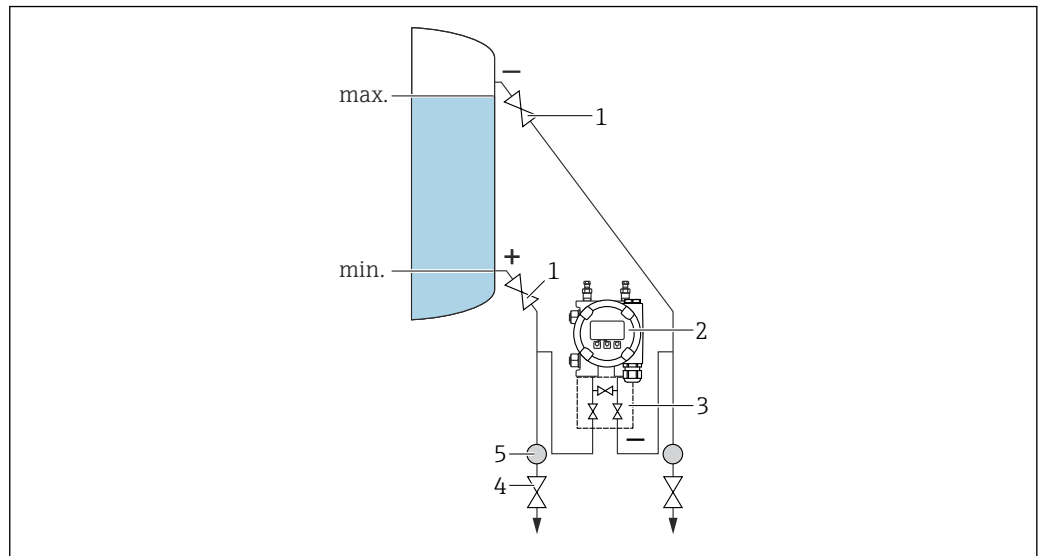


A0038215

- 1 Device
- 2 Three-valve manifold
- 3 The low-pressure side is open to atmospheric pressure
- 4 Drain valve
- 5 Separator
- 6 Shut-off valve

- Mount the device below the lower measuring connection so that the piping is always filled with liquid
- The low-pressure side is open to atmospheric pressure
- When measuring in media with solid parts, such as dirty liquids, installing separators and drain valves is useful for capturing and removing sediment

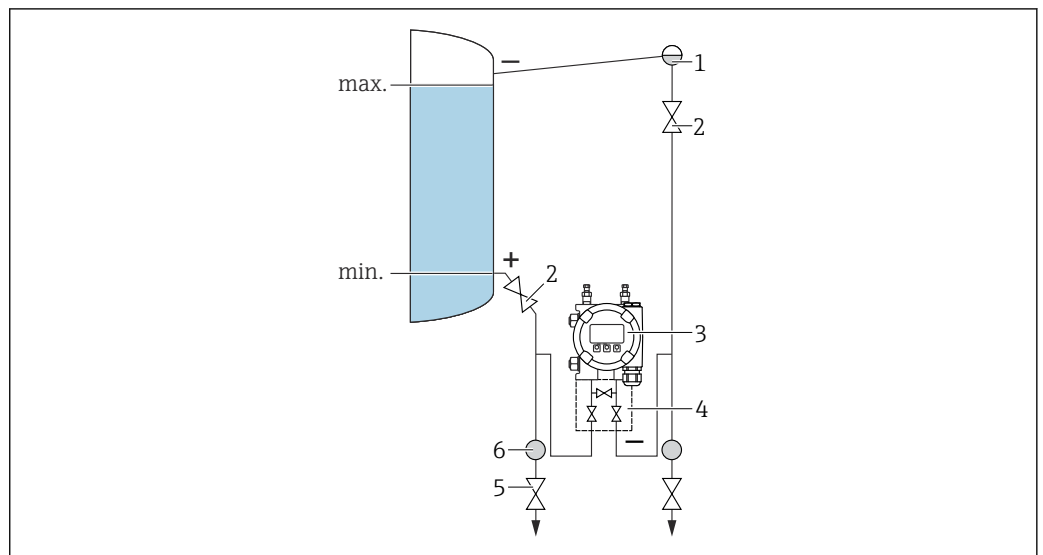
Level measurement in a closed vessel



- 1 Shutoff valves
- 2 Device
- 3 Three-valve manifold
- 4 Drain valves
- 5 Separator

- Mount the device below the lower measuring connection so that the piping is always filled with liquid
- Always connect the low-pressure side above the maximum level
- When measuring in media with solid parts, such as dirty liquids, installing separators and drain valves is useful for capturing and removing sediment

Level measurement in a closed vessel with superimposed vapor

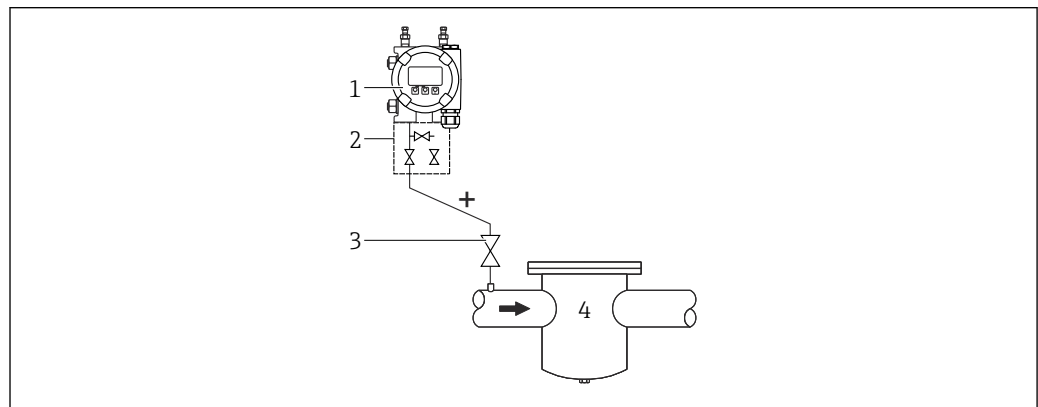


- 1 Condensate trap
- 2 Shutoff valves
- 3 Device
- 4 Three-valve manifold
- 5 Drain valves
- 6 Separator

- Mount the device below the lower measuring connection so that the piping is always filled with liquid
- Always connect the low-pressure side above the maximum level
- The condensate trap ensures constant pressure on the low-pressure side
- When measuring in media with solid parts, such as dirty liquids, installing separators and drain valves is useful for capturing and removing sediment

5.2.3 Pressure measurement

Pressure measurement with 160 bar (2 400 psi) and 250 bar (3 750 psi) measuring cell



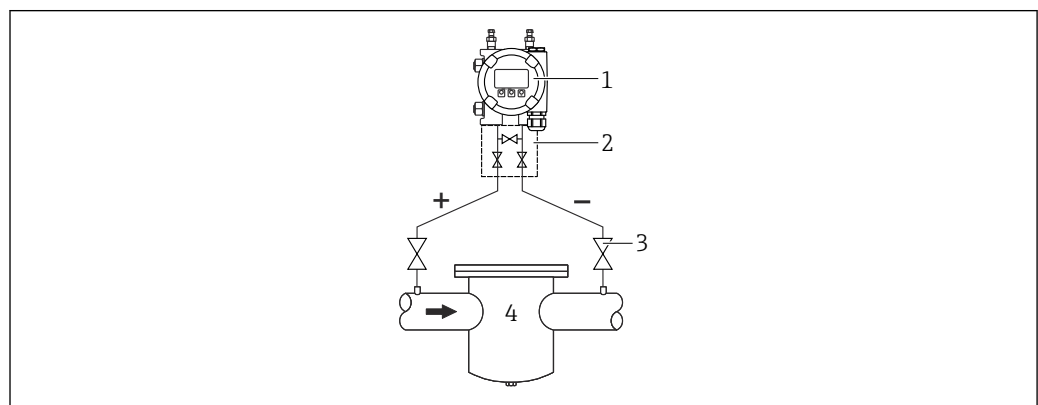
A0038218

- 1 Device with blind flange on low-pressure side
- 2 Three-valve manifold
- 3 Shutoff valves
- 4 Pressurized container

- Mount the device above the measuring point so that the condensate can drain into the process pipe
- The negative side is open to atmospheric pressure via the screwed-in reference air filter of the side flange on the low-pressure side

5.2.4 Differential pressure measurement

Differential pressure measurement in gases and vapors

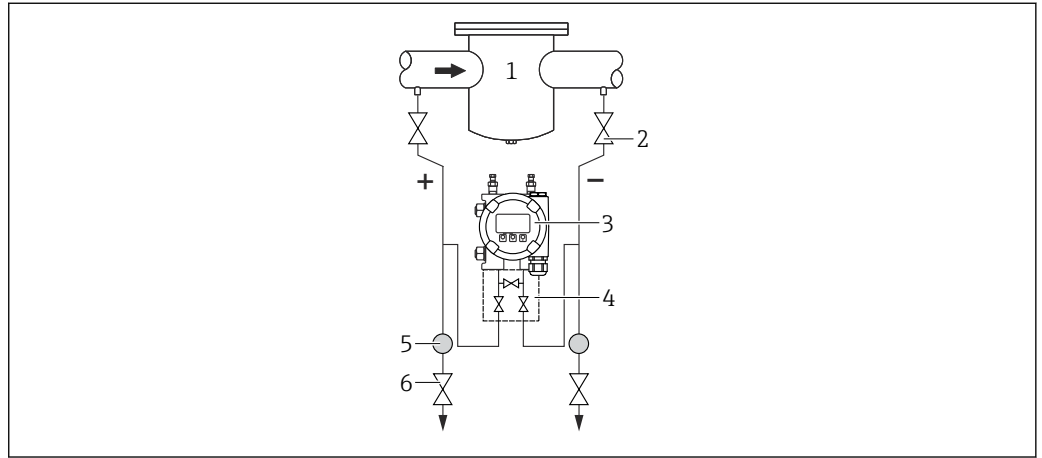


A0043423

- 1 Device
- 2 Three-valve manifold
- 3 Shutoff valves
- 4 e.g. filter

Mount the device above the measuring point so that condensate can drain into the process pipe.

Differential pressure measurement in liquids



A0038220

- 1 e.g. filter
- 2 Shutoff valves
- 3 Device
- 4 Three-valve manifold
- 5 Separator
- 6 Drain valves

- Mount the device below the measuring point so that the piping is always filled with liquid and gas bubbles can run back into the process pipe
- When measuring in media with solid parts, such as dirty liquids, installing separators and drain valves is useful for capturing and removing sediment

5.2.5 Oxygen applications (gaseous)

Oxygen and other gases can react explosively to oils, grease and plastics. The following precautions must be taken:

- All components of the system, such as devices, must be cleaned in accordance with national requirements.
- Depending on the materials used, a certain maximum temperature and a maximum pressure must not be exceeded for oxygen applications.

The cleaning of the device (not accessories) is provided as an optional service.

T_{\max}	P_{\max}
80 °C (176 °F)	80 bar (1 200 psi)
> 80 to 120 °C (176 to 248 °F)	70 bar (1 050 psi)

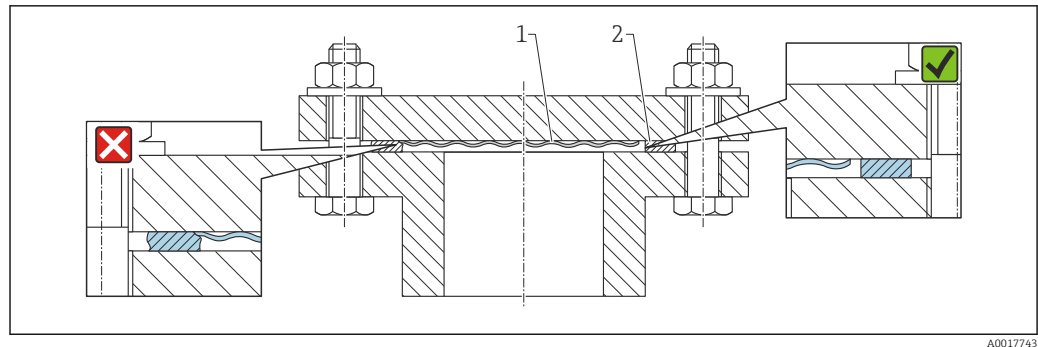
5.2.6 Seal for flange mounting

NOTICE

Seal pressing against the membrane!

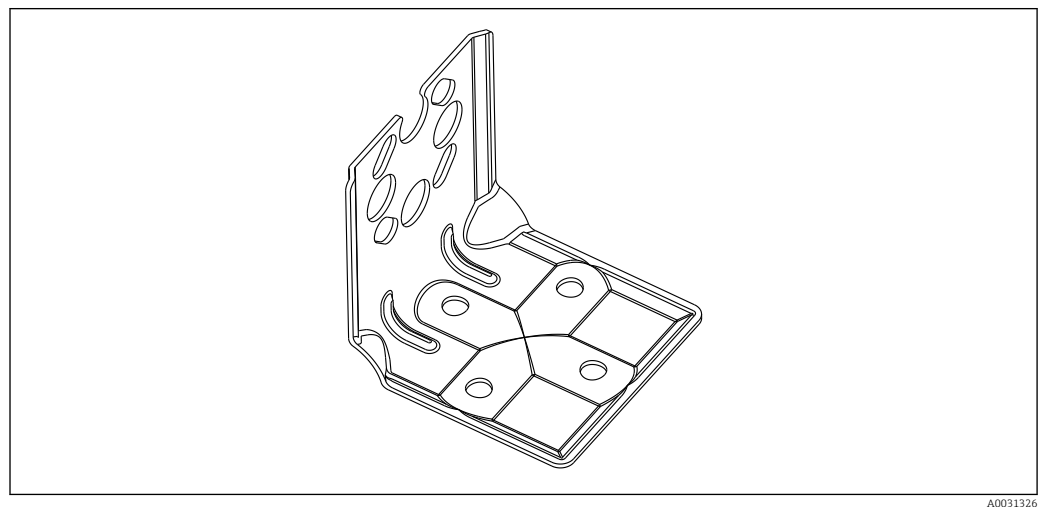
Incorrect measurement results!


- Ensure that the seal is not touching the membrane.




- 1 Membrane
2 Seal

5.2.7 Wall and pipe mounting



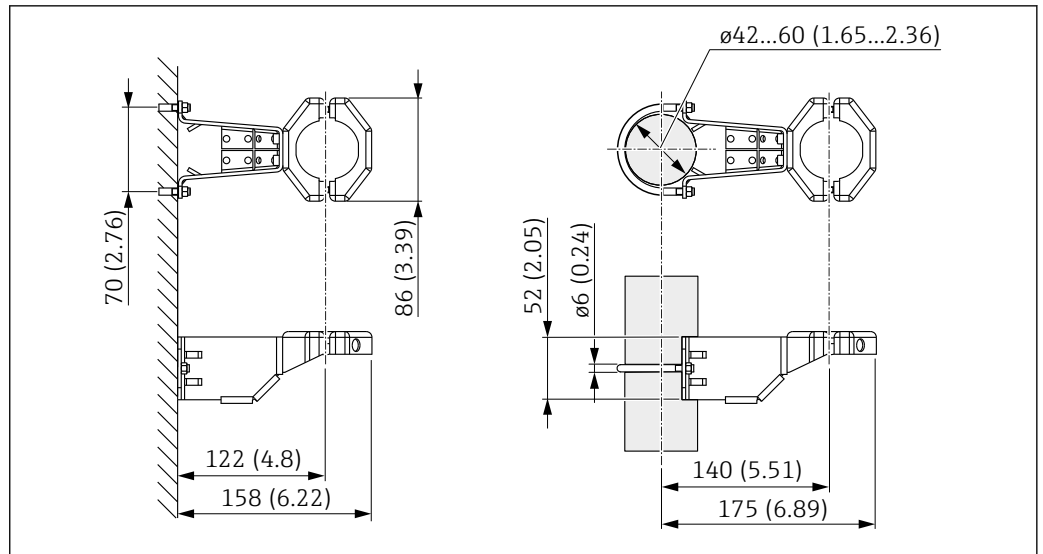
- If a manifold is used, its dimensions should also be taken into consideration.
 - Bracket for wall and pipe mounting including retaining bracket for pipe mounting and two nuts
 - The material of the screws used to secure the device depends on the order code.
-  For technical data (e.g. materials, dimensions or order numbers), see the accessory document SD01553P.

5.2.8 Wall and pipe mounting with a manifold (optional)

- Mount the device on a shutoff device, e.g. manifold or shutoff valve
 - Use the bracket provided. This make device removal easier.
-  For technical data (e.g. materials, dimensions or order numbers), see the accessory document SD01553P.

5.2.9 Mounting bracket for separate housing

The separate housing can be mounted on walls or pipes (for pipes with a diameter of 1 1/4" to 2") using the mounting bracket.



A0028493

Unit of measurement mm (in)

Ordering information:

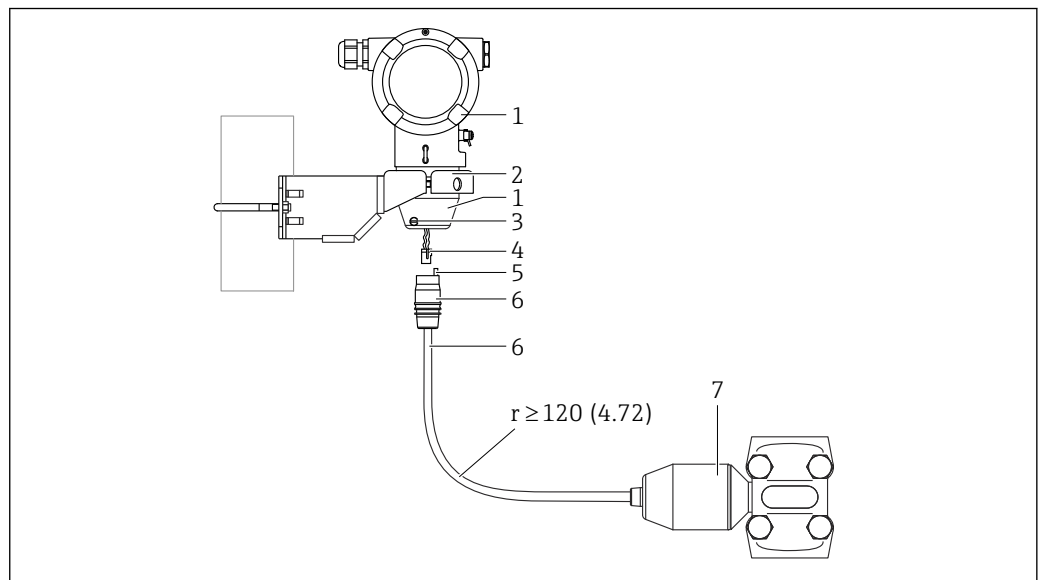
Can be ordered as a separate accessory, part number 71102216



The mounting bracket is included in the delivery if you order the device with a separate housing.

When mounting on a pipe, tighten the nuts on the bracket uniformly with a torque of at least 5 Nm (3.69 lbf ft).

5.2.10 Assembling and installing the separate housing



A0038725

Unit of measurement mm (in)

- 1 Housing mounted with housing adapter, included
- 2 Mounting bracket provided, suitable for pipe and wall mounting (for pipe diameters from 1 1/4" to 2")
- 3 Locking screw
- 4 Plug
- 5 Pressure compensation
- 6 Cable with connection jack
- 7 In the separate housing version, the measuring cell is delivered with the process connection and cable already mounted.

Assembly and installation

1. Insert the connector (item 4) into the corresponding connection jack of the cable (item 6).
2. Insert the cable with the socket (item 6) into the housing adapter (item 1) to the end stop.
3. Tighten the locking screw (item 3).
4. Mount the housing on a wall or pipe with the mounting bracket (item 2). When mounting on a pipe, tighten the nuts on the bracket uniformly with a torque of at least 5 Nm (3.69 lbf ft). Mount the cable with a bending radius (r) \geq 120 mm (4.72 in).

5.2.11 Turning the display module

⚠ WARNING

Supply voltage switched on!

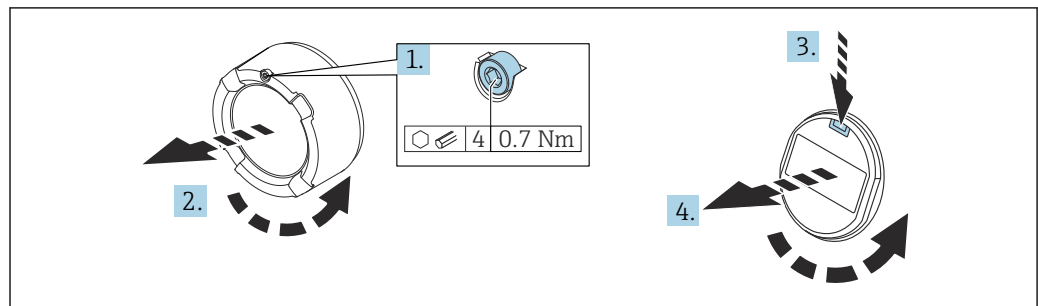
Risk of electric shock and/or explosion!

- Switch off the supply voltage before opening the device.

⚠ CAUTION

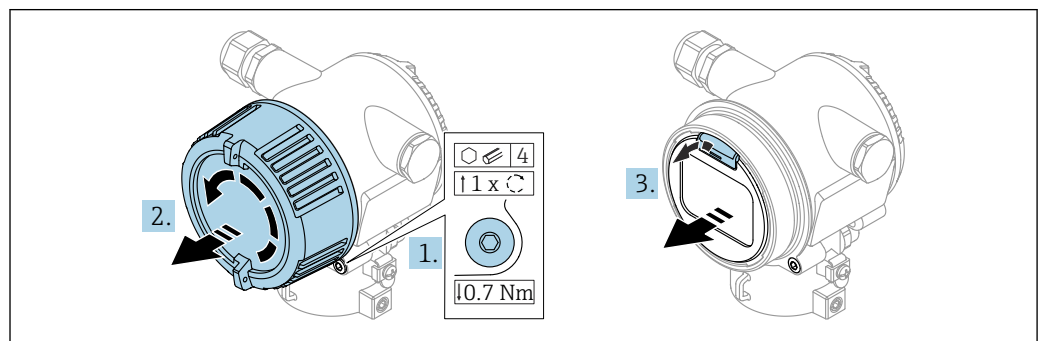
Dual-compartment housing: When opening the terminal compartment cover, fingers can get trapped between the cover and the pressure compensation filter.

- Open the cover slowly.



A0038224

2 Single-compartment housing and dual-compartment housing



A0058966

3 Dual-compartment housing, precision casting

1. If fitted: release the screw of the cover lock for the electronics compartment cover using the Allen key.
2. Unscrew the electronics compartment cover from the transmitter housing and check the cover seal. Dual-compartment housing, precision casting: Ensure there is no tension between the cover and cover locking screw. Release any tension by turning the cover locking screw in the tightening direction.

3. Press the release mechanism and remove the display module.
4. Turn the display module to the desired position: maximum $4 \times 90^\circ$ in each direction. Fit the display module on the electronics compartment in the desired position until it clicks into place. Screw the electronics compartment cover back onto the transmitter housing. If provided: tighten the screw of the cover lock using the Allen key 0.7 Nm (0.52 lbf ft) $\pm 0.2 \text{ Nm}$ (0.15 lbf ft).

5.2.12 Closing the housing covers

NOTICE

Thread and housing cover damaged from dirt and fouling!

- Remove dirt (e.g. sand.) on the thread of the cover and housing.
- If you continue to encounter resistance when closing the cover, check the thread again for fouling.



Housing thread

The threads of the electronics and connection compartment can be coated with an anti-friction coating.

The following applies for all housing materials:

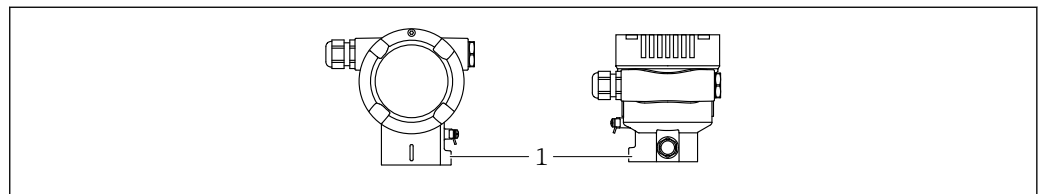
Do not lubricate the housing threads.

5.2.13 Rotating the housing

The housing can be rotated up to 360° by loosening the set screw.

Your benefits

- Easy installation due to optimum alignment of housing
- Convenient access to the device's operating elements
- Optimum readability of the local display (optional)



A0043807

1 Set screw

NOTICE

The housing cannot be unscrewed fully.

- Loosen the external set screw by a maximum of 1.5 turns. If the screw is turned further or completely removed (beyond the screw anchor point), small parts (counter disk) may become loose and fall out.
- Tighten the securing screw (hexagon socket 4 mm (0.16 in)) with maximum 3.5 Nm (2.58 lbf ft) $\pm 0.3 \text{ Nm}$ (0.22 lbf ft).

5.3 Post-mounting check

- ☐ Is the device undamaged (visual inspection)?
- ☐ Are the measuring point identification and labeling correct (visual inspection)?
- ☐ Is the device protected against precipitation and direct sunlight?

- ☐ Are the securing screws and cover lock tightened securely?
- ☐ Does the measuring device meet the measuring point specifications?
For example:
 - Process temperature
 - Process pressure
 - Ambient temperature
 - Measuring range

6 Electrical connection

6.1 Connection requirements

6.1.1 Potential equalization

The protective ground on the device must not be connected. If necessary, the potential matching line can be connected to the outer ground terminal of the device before the device is connected.

⚠ WARNING

Ignitable sparks.

Explosion hazard!

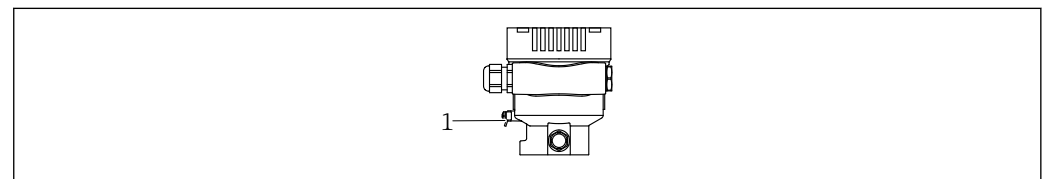
- Please refer to the separate documentation on applications in hazardous areas for the safety instructions.



For optimum electromagnetic compatibility:

- Use the shortest possible potential matching line.
- Ensure a cross-section of at least 2.5 mm² (14 AWG).

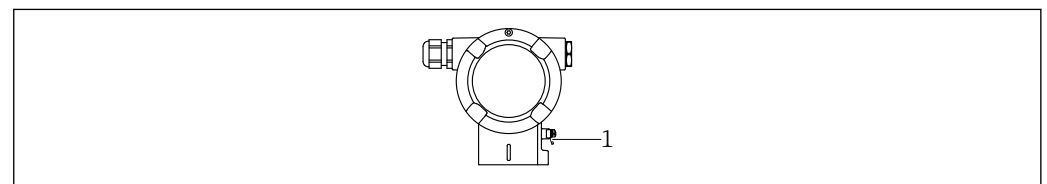
Single-compartment housing



A0045411

1 Ground terminal for connecting the potential matching line

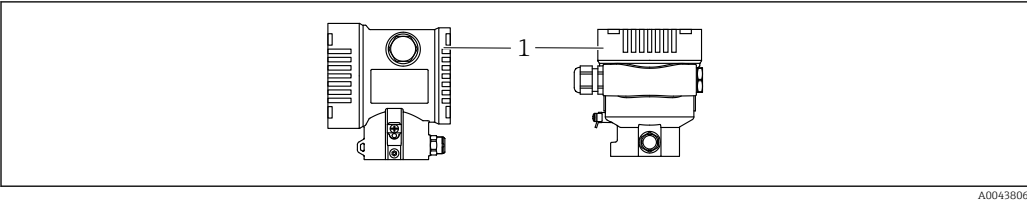
Dual-compartment housing



A0045412

1 Ground terminal for connecting the potential matching line

6.2 Connecting the device



1 Connection compartment cover

i Housing thread
The threads of the electronics and connection compartment can be coated with an anti-friction coating.
The following applies for all housing materials:
✗ Do not lubricate the housing threads.

6.2.1 Supply voltage

APL power class A (9.6 to 15 V_{DC} 540 mW)

i The APL field switch must be tested to ensure it meets safety requirements (e.g. PELV, SELV, Class 2) and must comply with the relevant protocol specifications.

6.2.2 Terminals

- Supply voltage and inner ground terminal
Clamping range: 0.5 to 2.5 mm² (20 to 14 AWG)
- External ground terminal
Clamping range: 0.5 to 4 mm² (20 to 12 AWG)

6.2.3 Cable specification

- Protective ground or grounding of the cable shield: rated cross-section > 1 mm² (17 AWG)
Rated cross-section of 0.5 mm² (20 AWG) to 2.5 mm² (13 AWG)
- Cable outer diameter: Ø5 to 12 mm (0.2 to 0.47 in) depends on the cable gland used (see Technical Information)

PROFINET with Ethernet-APL

The reference cable type for APL segments is fieldbus cable type A, MAU type 1 and 3 (specified in IEC 61158-2). This cable meets the requirements for intrinsically safe applications according to IEC TS 60079-47 and can also be used in non-intrinsically safe applications.

Cable type	A
Cable capacitance	45 to 200 nF/km
Loop resistance	15 to 150 Ω/km
Cable inductance	0.4 to 1 mH/km

Further details are provided in the Ethernet-APL Engineering Guideline (<https://www.ethernet-apl.org>).

6.2.4 Overvoltage protection

Devices without optional overvoltage protection

Equipment from Endress+Hauser fulfills the requirements of the product standard IEC/DIN EN 61326-1 (Table 2 Industrial Environment).

Depending on the type of port (DC power supply, input/output port) different testing levels according to IEC/DIN EN against transient overvoltages are applied (IEC/DIN EN 61000-4-5 Surge):

Test level on DC power ports and input/output ports is 1 000 V line to earth

Devices with optional overvoltage protection

- Spark-over voltage: min. 400 V_{DC}
- Tested according to IEC/DIN EN 60079-14 sub chapter 12.3 (IEC/DIN EN 60060-1 chapter 7)
- Nominal discharge current: 10 kA

NOTICE

The device may be damaged by excessively high electrical voltages.

- Always ground the device with integrated overvoltage protection.

Overvoltage category

Overvoltage category II

6.2.5 Wiring

⚠ WARNING

Supply voltage might be connected!

Risk of electric shock and/or explosion!

- When operating the device in hazardous areas, ensure compliance with national standards and the specifications outlined in the Safety Instructions (XAs). Use the specified cable gland.
- The supply voltage must match the specifications on the nameplate.
- Switch off the supply voltage before connecting the device.
- If necessary, the potential matching line can be connected to the outer ground terminal of the device before the power supply lines are connected.
- A suitable circuit breaker should be provided for the device in accordance with IEC/EN 61010.
- The cables must be adequately insulated, with due consideration given to the supply voltage and the overvoltage category.
- The connecting cables must offer adequate temperature stability, with due consideration given to the ambient temperature.
- Only operate the device with the covers closed.
- Protective circuits against reverse polarity, HF influences and overvoltage peaks are installed.

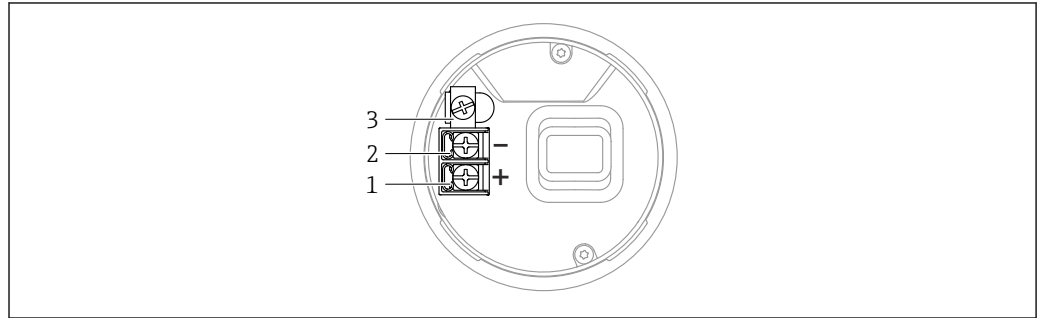
Connect the device in the following order:


1. Release the cover lock (if provided).
2. Unscrew the cover.
3. Guide the cables into the cable glands or cable entries.
4. Connect the cables.
5. Tighten the cable glands or cable entries so that they are leak-tight. Counter-tighten the housing entry. Use a suitable tool with width across flats AF24/25 8 Nm (5.9 lbf ft) for the M20 cable gland.

6. Screw the cover securely back onto the connection compartment.
7. If provided: tighten the screw of the cover lock using the Allen key
0.7 Nm (0.52 lbf ft) \pm 0.2 Nm (0.15 lbf ft).

6.2.6 Terminal assignment

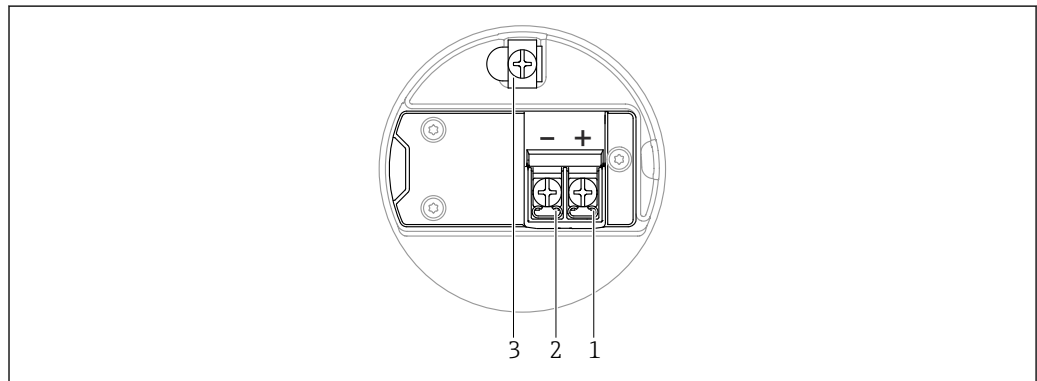
Single compartment housing




 4 Connection terminals and ground terminal in the connection compartment

- 1 Plus terminal
- 2 Minus terminal
- 3 Internal ground terminal

Dual-compartment housing



 5 Connection terminals and ground terminal in the connection compartment

- 1 Plus terminal
- 2 Minus terminal
- 3 Internal ground terminal

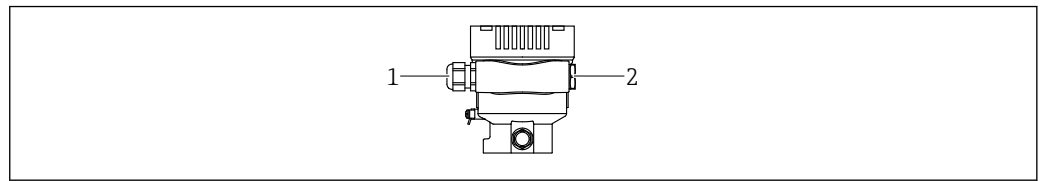
6.2.7 Cable entries

The type of cable entry depends on the device version ordered.

-  Always route connecting cables downwards so that moisture cannot penetrate the connection compartment.

If necessary, create a drip loop or use a weather protection cover.

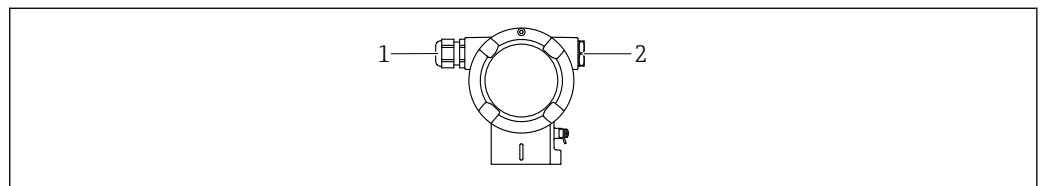
Single-compartment housing



A0045413

- 1 Cable entry
2 Blind plug

Dual-compartment housing



A0045414

- 1 Cable entry
2 Blind plug

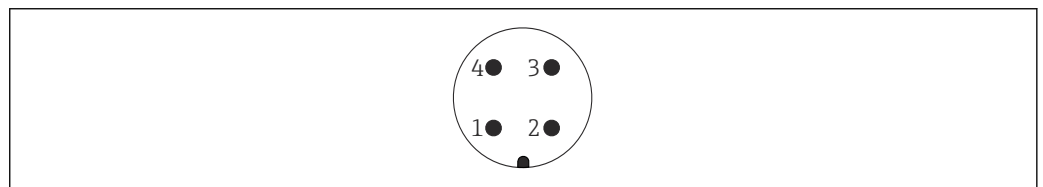
6.2.8 Available device plugs



In the case of devices with a plug, it is not necessary to open the housing for connection purposes.

Use the enclosed seals to prevent the penetration of moisture into the device.

Devices with M12 plug



A0011175

- 1 APL signal -
2 APL signal +
3 Shielding
4 Not used

6.3 Ensuring the degree of protection

6.3.1 Cable entries

- Gland M20, plastic, IP66/68 TYPE 4X/6P
- Gland M20, brass nickel plated, IP66/68 TYPE 4X/6P
- Gland M20, 316L, IP66/68 TYPE 4X/6P
- Thread M20, IP66/68 TYPE 4X/6P
- Thread G1/2, IP66/68 TYPE 4X/6P

If the G1/2 thread is selected, the device is delivered with an M20 thread as standard and a G1/2 adapter is included with the delivery, along with the corresponding documentation

- Thread NPT1/2, IP66/68 TYPE 4X/6P
- Dummy plug transport protection: IP22, TYPE 2
- M12 plug
 - When housing is closed and connecting cable is plugged in: IP66/67, NEMA Type 4X
 - When housing is open or connecting cable is not plugged in: IP20, NEMA Type 1

NOTICE**M12 plug: incorrect installation can invalidate the IP protection class!**

- ▶ The degree of protection only applies if the connecting cable used is plugged in and screwed tight.
- ▶ The degree of protection only applies if the connecting cable used is specified according to IP67, NEMA Type 4X.
- ▶ The IP protection classes are only maintained if the dummy cap is used or the cable is connected.

6.4 Post-connection check

After wiring the device, perform the following checks:

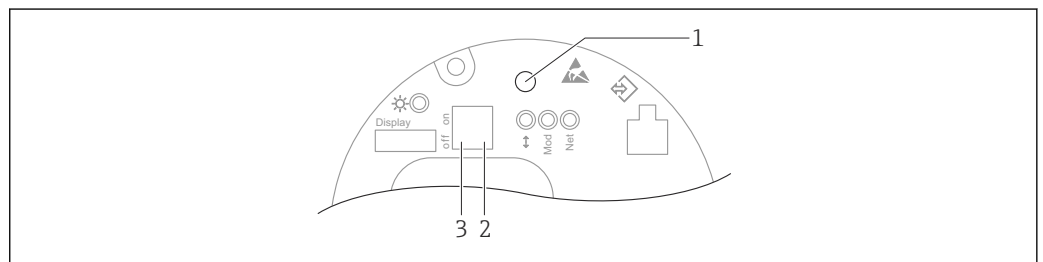
- ☐ Is the potential matching line connected?
- ☐ Is the terminal assignment correct?
- ☐ Are the cable glands and dummy plugs leak-tight?
- ☐ Are the fieldbus connectors properly secured?
- ☐ Are the covers screwed down correctly?

7 Operation options

7.1 Overview of operation options


- Operation via operating keys and DIP switches on the electronic insert
- Operation via optical operating keys on the device display (optional)
- Operation via Bluetooth® wireless technology (with optional Bluetooth device display) with SmartBlue app or FieldXpert, DeviceCare
- Operation via web server
- PROFINET: Operation via Fieldcare, DeviceCare, FDI Hosts (e.g. PDM)

7.2 Operating keys and DIP switches on the electronic insert



A0046061

- 1 Operating key for position adjustment (zero point correction) and device reset
- 2 DIP switch for setting the service IP address
- 3 DIP switch for locking and unlocking the device

 The setting of the DIP switches has priority over the settings made via other operation methods (e.g. FieldCare/DeviceCare).

7.3 Structure and function of the operating menu

The differences between the structure of the operating menus of the local display and the Endress+Hauser FieldCare or DeviceCare operating tools can be summarized as follows:

The local display is suitable for configuring simple applications.

More elaborate applications can be configured with the Endress+Hauser FieldCare or DeviceCare tools as well as Bluetooth and the SmartBlue app and the device display.

More elaborate applications can be configured with the Web server.

Wizards help the user to commission the various applications. The user is guided through the individual configuration steps.

7.3.1 User roles and related access authorization

The two user roles **Operator** and **Maintenance** (as-delivered state) have different write access to the parameters if a device-specific access code has been defined. This access code protects the device configuration from unauthorized access.


If an incorrect access code is entered, the user retains the **Operator** option user role.

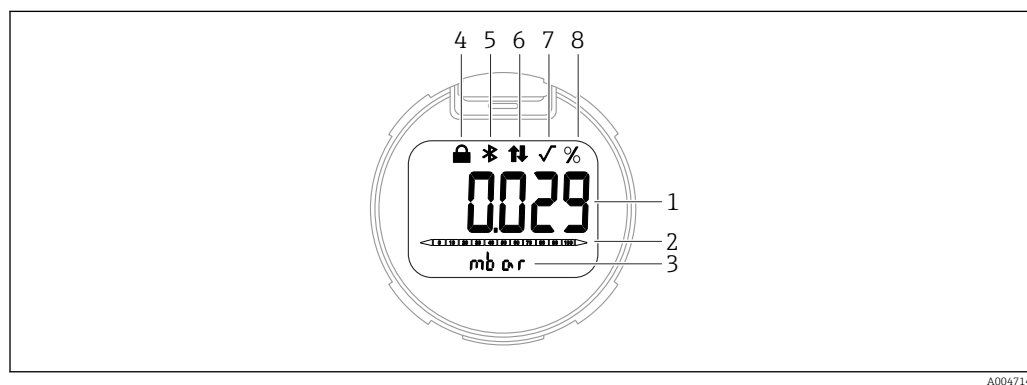
7.4 local display

7.4.1 Device display (optional)

Functions:

- Display measured values and fault and notice messages
- Background lighting, which switches from green to red in the event of an error
- The device display can be removed for easier operation
- The device display fits into both housing parts (top and side) of the L-form dual-compartment housing.

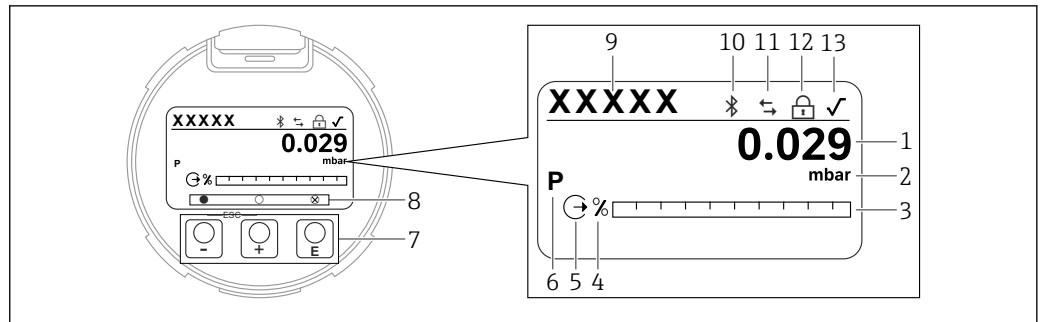
 The device displays are available with the additional option of Bluetooth® wireless technology.



 6 Segment display

- 1 Measured value (up to 5 digits)
- 2 Bar graph (refers to the specified pressure range) (not for PROFINET over Ethernet-APL)
- 3 Unit of measured value
- 4 Locking (symbol appears when device is locked)
- 5 Bluetooth (symbol flashes if Bluetooth connection is active)
- 6 PROFINET over Ethernet-APL communication (symbol appears if PROFINET over Ethernet-APL communication is enabled)
- 7 Not supported for PROFINET over Ethernet-APL
- 8 Measured value output in %

The following graphics are examples. The display depends on the display settings.



A0047141

7 Graphic display with optical operating keys.

- 1 Measured value (up to 12 digits)
- 2 Unit of measured value
- 3 Bar graph (refers to the specified pressure range) (not for PROFINET over Ethernet-APL) (not for PROFIBUS PA)
- 4 Bar graph unit
- 5 Symbol for current output (not for PROFINET over Ethernet-APL) (not for PROFIBUS PA)
- 6 Symbol for displayed measured value (e.g. p = pressure)
- 7 Optical operating keys
- 8 Symbols for key feedback. Different display symbols are possible: circle (not filled in) = key pressed briefly; circle (filled in) = key pressed for longer; circle (with X) = no operation possible due to Bluetooth connection
- 9 Device Tag
- 10 Bluetooth (symbol flashes if Bluetooth connection is active)
- 11 PROFINET over Ethernet-APL communication (symbol appears if PROFINET over Ethernet-APL communication is enabled) PROFIBUS PA communication (symbol appears when PROFIBUS PA communication is enabled)
- 12 Locking (symbol appears when device is locked)
- 13 Not supported for PROFINET over Ethernet-APL

- key
 - Navigate downwards in the selection list
 - Edit the numerical values or characters within a function
- key
 - Navigate upwards in the selection list
 - Edit the numerical values or characters within a function
- key
 - Confirm entry
 - Jump to the next item
 - Select a menu item and activate edit mode
 - Unlock/lock the display operation
 - Press and hold the key to display a short description of the selected parameter (if available)
- key and key (ESC function)
 - Exit the edit mode for a parameter without saving the changed value
 - Menu at a selection level: pressing the keys simultaneously takes the user back up a level in the menu
 - Press and hold the keys simultaneously to return to the upper level

7.4.2 Operation via Bluetooth® wireless technology (optional)

Prerequisite

- Device with device display including Bluetooth
- Smartphone or tablet with Endress+Hauser SmartBlue app or PC with DeviceCare from version 1.07.05 or FieldXpert SMT70

The connection has a range of up to 25 m (82 ft). The range can vary depending on environmental conditions such as attachments, walls or ceilings.

i The operating keys on the display are locked as soon as the device is connected via Bluetooth.

A flashing Bluetooth symbol indicates that a Bluetooth connection is available.

i Please note the following

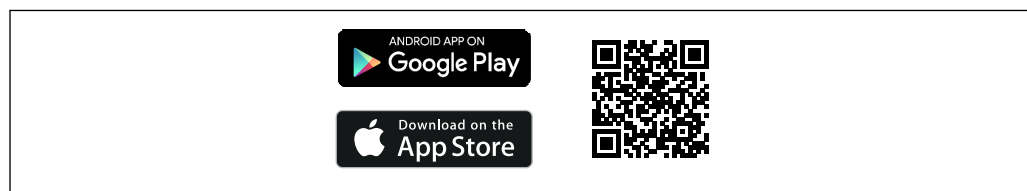
If the Bluetooth display is removed from one device and installed in another device:

- All the log-in data are only saved in the Bluetooth display and not in the device
- The password changed by the user is also saved in the Bluetooth display

Operation via the SmartBlue app

The device can be operated and configured with the SmartBlue App.

- The SmartBlue App must be downloaded onto a mobile device for this purpose
- For information on the compatibility of the SmartBlue App with mobile devices, see **Apple App Store (iOS devices)** or **Google Play Store (Android devices)**
- Incorrect operation by unauthorized persons is prevented by means of encrypted communication and password encryption
- The Bluetooth® function can be deactivated after initial device setup



A0033202

8 QR code for free Endress+Hauser SmartBlue App

Download and installation:

1. Scan the QR code or enter **SmartBlue** in the search field of the Apple App Store (iOS) or Google Play Store (Android).
2. Install and start the SmartBlue app.
3. For Android devices: enable location tracking (GPS) (not required for iOS devices).
4. Select a device that is ready to receive from the device list displayed.

Login:

1. Enter the user name: admin
2. Enter the initial password: serial number of the device
3. Change the password after logging in for the first time

i Notes on the password and reset code

- If the user-defined password is lost, access can be restored via a reset code. The reset code is the serial number of the device in reverse. The original password is once again valid after the reset code has been entered.
- The reset code can also be changed in addition to the password.
- If the user-defined reset code is lost, the password can no longer be reset via the SmartBlue app. Contact Endress+Hauser Service in this case.

7.5 Access to operating menu via web browser

7.5.1 Function scope

Thanks to the integrated Web server the device can be operated and configured via a Web browser. The structure of the operating menu is the same as for the local display. In addition to the measured values, device status information is also displayed and allows users to monitor the status of the device. Furthermore the device data can be managed and the network parameters can be configured.

7.5.2 Prerequisites

Computer software

Recommended operating systems

- Microsoft Windows 7 or higher.
- Mobile operating systems:
 - iOS
 - Android



Microsoft Windows XP is supported.

Web browsers supported

- Microsoft Internet Explorer 8 or higher
- Microsoft Edge
- Mozilla Firefox
- Google Chrome
- Safari

Computer settings

User rights

Corresponding user rights (e.g., administrator rights) for TCP/IP and proxy server settings are required (for changing the IP address, subnet mask etc.).

Proxy server settings of the web browser

The web browser *Use proxy server for LAN* setting must be **disabled**.

JavaScript

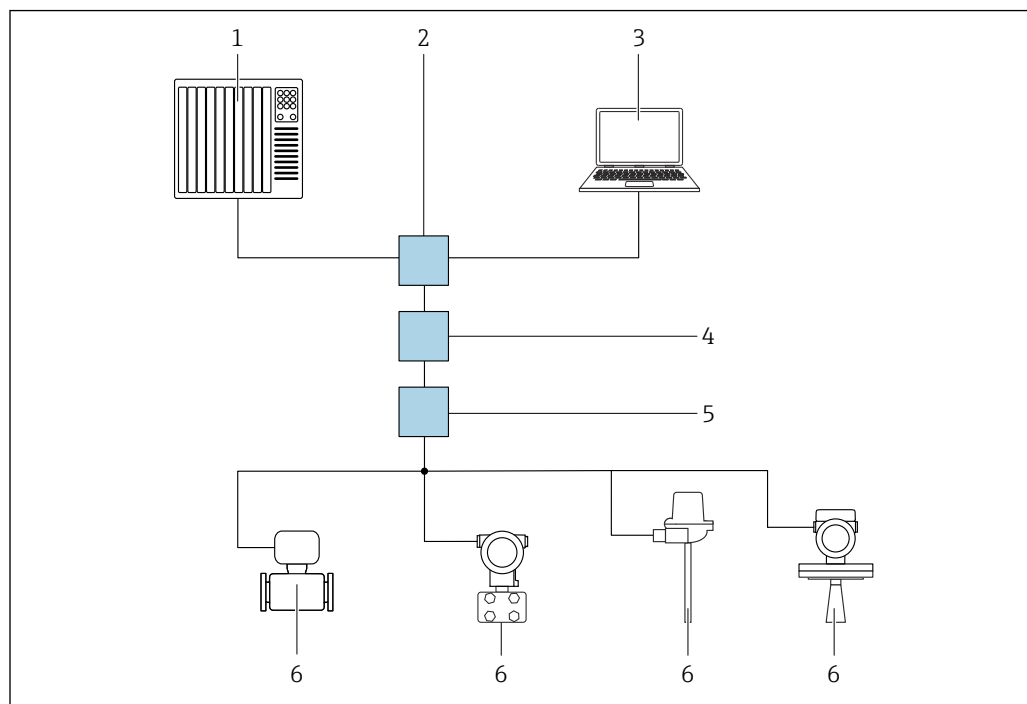
JavaScript must be enabled.



When installing a new firmware version: To enable correct data display, clear the temporary memory (cache) of the web browser under **Internet options**.

7.5.3 Connecting the device

Via PROFINET over Ethernet-APL network




A0046097

9 Options for remote operation via PROFINET over Ethernet-APL network: star topology

- 1 Automation system, e.g. Simatic S7 (Siemens)
- 2 Ethernet switch
- 3 Computer with web browser (e.g., Microsoft Edge) for accessing the integrated device web server or computer with operating tool (e.g. FieldCare, DeviceCare, SIMATIC PDM) with iDTM PROFINET Communication
- 4 APL power switch (optional)
- 5 APL field switch
- 6 APL field device

Call up the website via the computer in the network. The IP address of the device must be known.

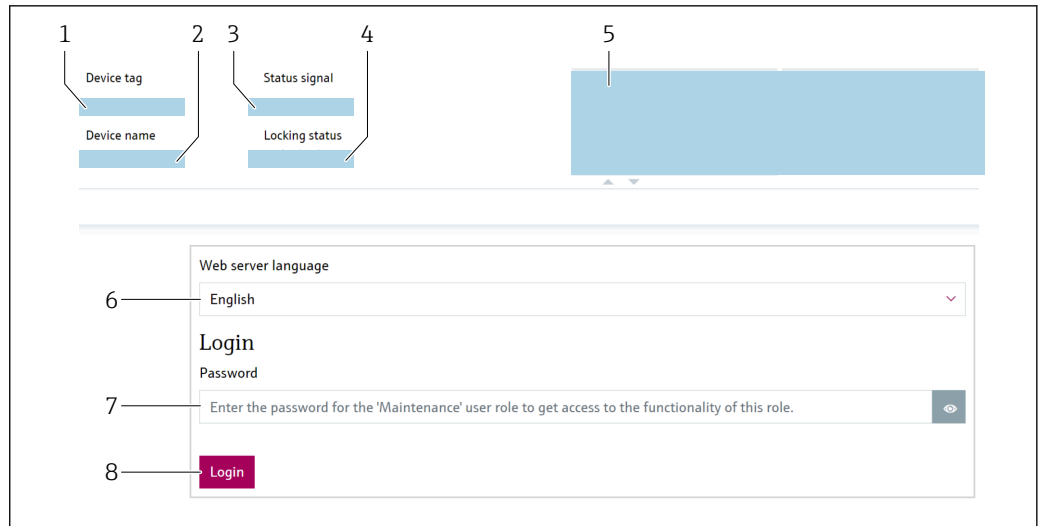
The IP address can be assigned to the device in a variety of ways:

- Dynamic Configuration Protocol (DHCP), factory setting
The automation system (e.g. Siemens S7) automatically assigns the IP address to the device.
- Software addressing
The IP address is entered via the IP address parameter.
- .DIP switch for service
The device then has the fixed IP address 192.168.1.212.
 The IP address is only adopted following a restart.
The IP address can now be used to establish the connection to the network.

The default setting is that the device uses the Dynamic Configuration Protocol (DHCP). The automation system (e.g. Siemens S7) automatically assigns the IP address of the device.

Starting the Web browser and logging in

1. Start the web browser on the computer.
2. Enter the IP address of the web server in the address line of the web browser:
192.168.1.212
↳ The login page appears.

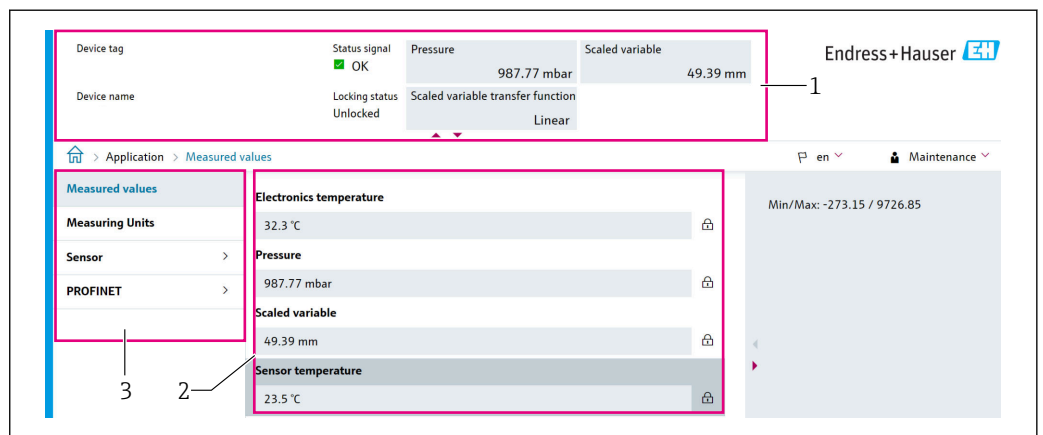


A0046626

- 1 Device tag
- 2 Device name
- 3 Status signal
- 4 Locking status
- 5 Current measured values
- 6 Select the language
- 7 Enter the "Password" parameter
- 8 Login

1. Select the preferred **Language** parameter for the web browser.
2. Enter the **Password** parameter.
3. Confirm entry with Login.

7.5.4 User interface



A0046168

- 1 Header
- 2 Work area
- 3 Navigation area

Header

The following information appears in the header:

- **Device tag** parameter,
- Device name
- Status signal
- Locking status
- Current measured values

Navigation area

If a function is selected in the function bar, the submenus of the function open in the navigation area. The user can now navigate within the menu structure.

Work area

Depending on the selected function and the related submenus, various actions can be performed in this area:

- Configuring parameters
- Reading measured values
- Calling up help texts

7.5.5 Disabling the Web server

The web server of the measuring instrument can be switched on and off as required using the **Web server functionality** parameter.

Navigation

"System" menu → Connectivity → Interfaces

Parameter overview with brief description

Parameter	Description	Selection
Web server functionality	Switch web server on and off, switch off HTML.	<ul style="list-style-type: none"> ■ Disable ■ Enable

Function range of "Web server functionality" parameter

Option	Description
Disable	<ul style="list-style-type: none"> ■ The web server is completely disabled. ■ Port 80 is locked.
Enable	<ul style="list-style-type: none"> ■ The complete web server functionality is available. ■ JavaScript is used. ■ The password is transferred in an encrypted state. ■ Any change to the password is also transferred in an encrypted state.


Enabling the web server

If the web server is disabled, it can only be re-enabled with the **Web server functionality** parameter via the following operating options:

- Via local display
- Via the "FieldCare" operating tool
- Via the "DeviceCare" operating tool

7.5.6 Logging out

1. Select the **Logout** entry in the function bar.
 ↳ The home page with the Login box appears.
2. Close the Web browser.

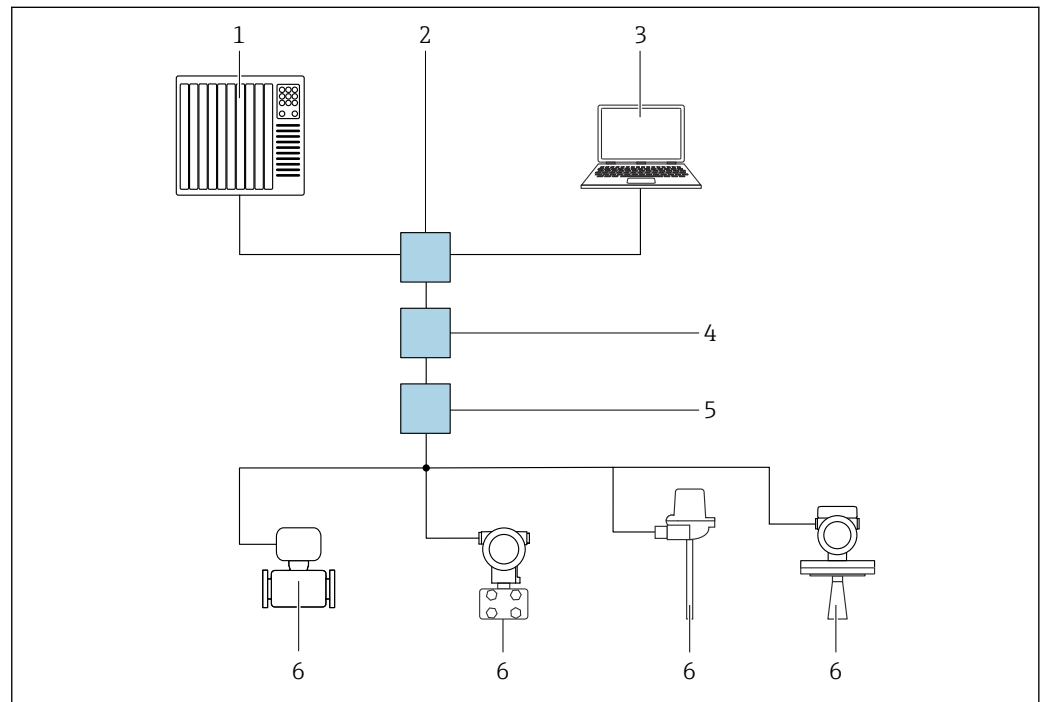
 Once communication with the Web server is established via the standard IP address 192.168.1.212, the DIP switch must be reset (from **ON** → **OFF**). After that, the configured IP address of the device is once again active for network communication.

7.6 Access to the operating menu via the operating tool

The structure of the operating menu in the operating tools is the same as for operation via the local display. The range of functions is different however.

7.6.1 Connecting the operating tool

Via PROFINET over Ethernet-APL network




10 Options for remote operation via PROFINET over Ethernet-APL network: star topology

- 1 Automation system, e.g. Simatic S7 (Siemens)
- 2 Ethernet switch
- 3 Computer with web browser (e.g., Microsoft Edge) for accessing the integrated device web server or computer with operating tool (e.g. FieldCare, DeviceCare, SIMATIC PDM) with iDTM PROFINET Communication
- 4 APL power switch (optional)
- 5 APL field switch
- 6 APL field device

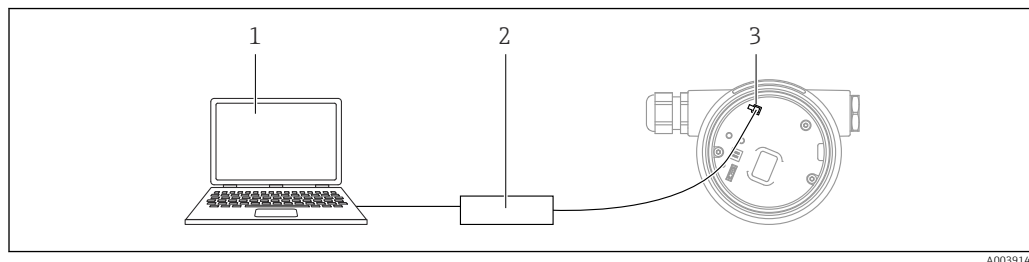
Call up the website via the computer in the network. The IP address of the device must be known.

The IP address can be assigned to the device in a variety of ways:

- **Dynamic Configuration Protocol (DHCP), factory setting**
The automation system (e.g. Siemens S7) automatically assigns the IP address to the device.
- **Software addressing**
The IP address is entered via the IP address parameter.
- **.DIP switch for service**
The device then has the fixed IP address 192.168.1.212.
 The IP address is only adopted following a restart.
The IP address can now be used to establish the connection to the network.

The default setting is that the device uses the Dynamic Configuration Protocol (DHCP). The automation system (e.g. Siemens S7) automatically assigns the IP address of the device.

Service interface



- 1 Computer with FieldCare/DeviceCare operating tool
 2 Commubox FXA291
 3 Service interface (CDI) of the device (= Endress+Hauser Common Data Interface)



To update (flash) the device firmware, the device must be powered via the power supply terminals.

7.6.2 DeviceCare

Range of functions

Tool for connecting and configuring Endress+Hauser field devices

The fastest way to configure Endress+Hauser field devices is with the dedicated "DeviceCare" tool. Together with the device type managers (DTMs), DeviceCare presents a convenient, comprehensive solution.



For details, see Innovation Brochure IN01047S.

7.6.3 FieldCare

Range of functions

FDT-based plant asset management tool from Endress+Hauser. FieldCare can configure all intelligent field devices in a system and helps you manage them. By using the status information, FieldCare is also a simple but effective way of checking their status and condition.

Access is via:

- CDI service interface
- PROFINET communication

Typical functions:

- Configuration of transmitter parameters
- Loading and saving of device data (upload/download)
- Documenting the measuring point
- Visualizing the measured value memory (line recorder) and event logbook



For additional information about FieldCare, see Operating Instructions BA00027S and BA00059S

7.7 HistoROM

When replacing the electronic insert, the stored data is transferred by reconnecting the HistoROM. The device does not work without HistoROM.

The device serial number is saved in the HistoROM. The electronics serial number is saved in the electronics.

8 System integration

8.1 Overview of device description files

8.1.1 Current version data for the device

Firmware version	01.01.zz	<ul style="list-style-type: none"> On the title page of the manual On the transmitter nameplate Firmware version System → Information → Firmware version
Release date of firmware version	01.2022	–
Manufacturer ID	0x11	Guidance → Commissioning → Manufacturer ID
Device ID	ID: A231	Application → PROFINET → Information → Device ID On the transmitter nameplate
Profile 4 device ID	B310	On the transmitter nameplate
Device revision	1	On the transmitter nameplate
PROFINET version	2.4x	–
Profile version	4.0x	

8.1.2 Operating tools

The suitable device description file for the individual operating tools is listed in the table below, along with information on where the file can be acquired.

Operating tool via Service interface (CDI)	Sources for obtaining device descriptions
FieldCare	<ul style="list-style-type: none"> www.endress.com → Download-Area CD-ROM (contact Endress+Hauser) DVD (contact Endress+Hauser)
DeviceCare	<ul style="list-style-type: none"> www.endress.com → Download-Area CD-ROM (contact Endress+Hauser) DVD (contact Endress+Hauser)
SMT70	Use update function of handheld terminal
AMS Device Manager (Emerson Process Management)	www.endress.com → Download-Area
SIMATIC PDM (Siemens)	www.endress.com → Download-Area

8.2 Device master file (GSD)

In order to integrate field devices into a bus system, the PROFINET over Ethernet-APL system needs a description of the device parameters, such as output data, input data, data format and data volume.

These data are available in the device master file (GSD) which is provided to the automation system when the communication system is commissioned. In addition device bit maps, which appear as icons in the network structure, can also be integrated.

The device master file (GSD) is in XML format, and the file is created in the GSDML description markup language.

Downloading the device master file (GSD)

- Via Web server: Menu path System → Device drivers
- Via www.endress.com/download

8.2.1 File name of the device master file (GSD)

Example of the name of a device master file:

GSDML-V2.42-EH_PMDXXB_APL_DELTABAR-20220214.xml

GSDML	Description language
V2.42	Version of the PROFINET specification
EH	Endress+Hauser
- PMDXXB_APL_DELTABA R	Instrument family
20220214	Date of issue (year, month, day)
.xml	File name extension (XML file)

8.3 Cyclic data transmission

8.3.1 Overview of the modules

The following graphic shows which modules are available to the device for cyclic data exchange. Cyclic data exchange is performed with an automation system.

Device		Direction Data flow	Control system
Modules	Slot		
Analog input (Pressure)	1	→	PROFINET
Analog input (Scaled variable)	20	→	
Analog input (Sensor temperature)	21	→	
Analog input (Sensor pressure)	22	→	
Analog input (Electronics temperature)	23	→	
Analog input (Median of pressure signal)	24	→	
Analog input (Noise of pressure signal)	25	→	
Binary input (Heartbeat Technology)	80	→	
Binary input (SSD: Statistical Sensor Diagnostics)	81	→	
Binary output (Heartbeat Technology)	210	←	

BinaryInput Sensordiagnostics Slot 81

Bit	Function	Description
0	Process alert pressure	Process alert pressure detected.
1	Process alert scaled variable	Process alert scaled variable detected.
2	Process alert temperature	Process alert temperature detected.
3	Low signal noise detected	Low signal noise detected
4	High signal noise detected	High signal noise detected
5	Min signal noise detected	Min signal noise detected
6	Out of range signal detected	Out of range signal detected
7	-	-

8.3.2 Description of the modules



The data structure is described from the perspective of the automation system:

- Input data: are sent from the device to the automation system
- Output data: are sent from the automation system to the device

Analog Input module

Transmission of input variables from the device to the automation system:

Analog Input modules cyclically transmit the selected input variables, including the status, from the device to the automation system. The input variable is depicted in the first four bytes in the form of a floating point number as per the IEEE 754 standard. The fifth byte contains status information pertaining to the input variable. The "Pressure" Analog Input module in Slot 1 is contained in the pressure PA PROFILE GSD. The other Analog Input modules can only be used with the manufacturer GSD.

Binary Output module

The Binary Output module can cyclically receive discrete output values from the automation system. The device implements an 8-bit type as described in PA PROFILE 4.0x. Of this, 1 bit is used to signal to the device that Heartbeat Verification should be started.

Bit	Function	Description
0	Start verification	Start verification
1...7	-	-

Binary Input module

The Binary Input module can cyclically send discrete values from the device to the automation system. In the device, the status of the Heartbeat Verification is transmitted:

Bit	Function	Description
0	Status Not done	Verification not performed
1	Status Failed	Verification failed. At least one test group was outside the specifications.
2	Status Busy	Verification in progress
3	Status Done	Verification performed
4	Verification result Failed	Verification failed. At least one test group is outside the specifications.
5	Verification result Passed	The device has passed the verification. All the verified test groups met the specifications.
6	The verification result is also "Passed" if the result for an individual test group is "Failed" and the result for all other test groups is "Passed".	
7	Verification result Not done	Verification not performed

8.3.3 Status coding

Status	Coding (hex)	Meaning
BAD - Maintenance alarm	0x24	No measured value available, as a device error has occurred.
BAD - Process related	0x28	No measured value available, as the process conditions are not within the device's technical specification limits.
BAD - Function check	0x3C	A function check is active (e.g. cleaning or calibration)
UNCERTAIN - Initial value	0x4F	A predefined value is output until a correct measured value is available again or corrective measures have been performed that change this status.
UNCERTAIN - Maintenance demanded	0x68	Wear and tear has been detected. Maintenance is needed shortly to ensure the device remains operational. The measured value might be invalid. The use of the measured value depends on the application.
UNCERTAIN - Process related	0x78	The process conditions are not within the device's technical specification limits. This could have a negative impact on the quality and accuracy of the measured value. The use of the measured value depends on the application.
GOOD - OK	0x80	No error has been diagnosed.

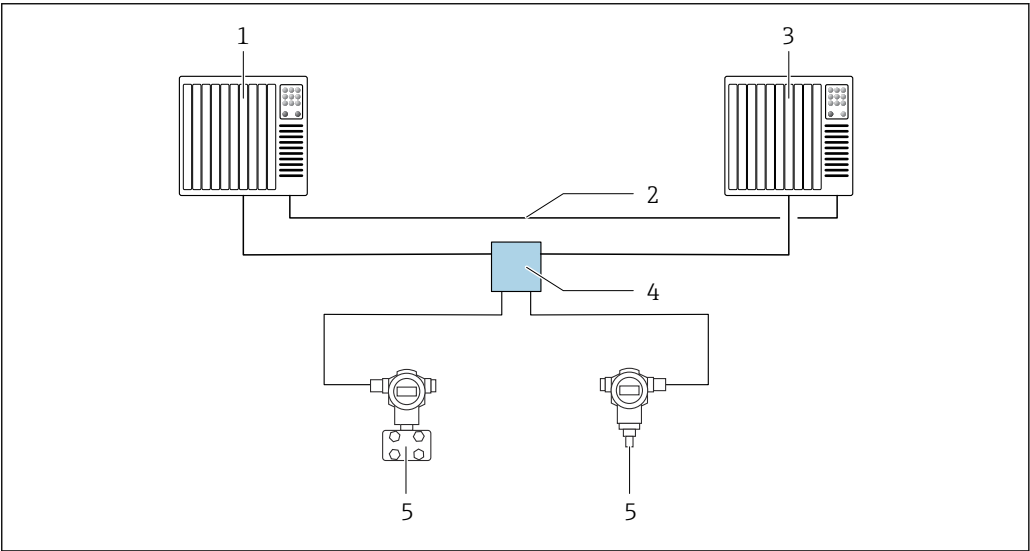
Status	Coding (hex)	Meaning
GOOD - Maintenance demanded	0xA8	The measured value is valid. It is highly advisable to service the device in the near future.
GOOD - Function check	0xBC	The measured value is valid. The device performs an internal function check. The function check does not have any noticeable effect on the process.

8.3.4 Startup configuration

Startup configuration (NSU)	<p>The automation system adopts the configuration of the most important parameters of the device.</p> <ul style="list-style-type: none">■ Management:<ul style="list-style-type: none">■ Display operation■ Web server functionality■ Bluetooth activation■ Service CDI■ System units:<ul style="list-style-type: none">■ Pressure unit■ Temperature unit■ Scaled variable unit■ Process:<ul style="list-style-type: none">Damping■ Alarm delay■ Diagnostic settings■ Diagnostic behavior for diverse diagnostic information
-----------------------------	--


8.4 System redundancy S2

A redundant layout with two automation systems is necessary for processes that are in continuous operation. If one system fails the second system guarantees continued, uninterrupted operation. The device supports S2 system redundancy and can communicate simultaneously with both automation systems.



11 Example of the layout of a redundant system (S2): star topology

- 1 Automation system 1
- 2 Synchronization of automation systems
- 3 Automation system 2
- 4 Ethernet-APL Field Switch
- 5 Device

 All the devices in the network must support S2 system redundancy.

9 Commissioning

9.1 Preparatory steps

The measuring range and the unit in which the measured value is transmitted correspond to the specifications on the nameplate.

⚠ WARNING

Process pressure above or below permitted maximum/minimum!

Risk of injury if parts burst! Warnings are displayed if the pressure is too high.

- ▶ If a pressure smaller than the minimum permitted pressure or greater than the maximum permitted pressure is present at the device, a message is output.
- ▶ Only use the device within the measuring range limits.

9.1.1 As-delivered state

If no customized settings were ordered:

- Calibration values defined by defined measuring cell nominal value
- DIP switch to Off position
- If Bluetooth is ordered, then Bluetooth is switched on

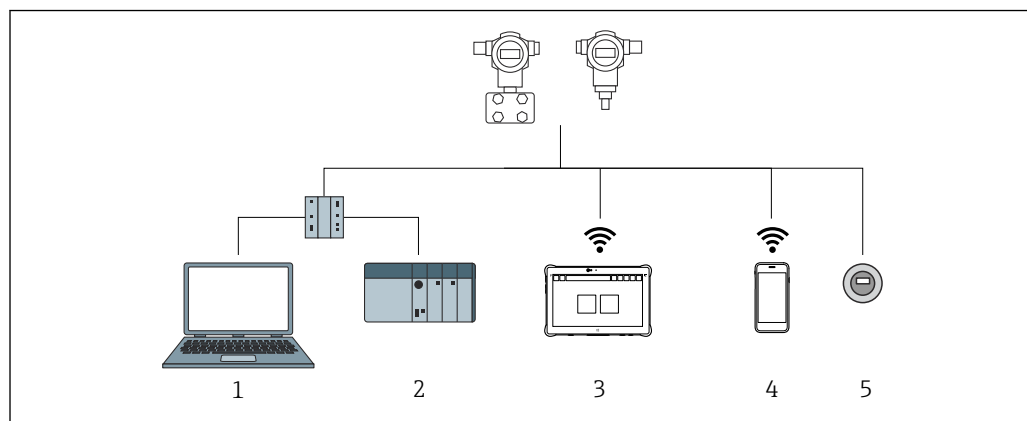
9.2 Function check

Perform a function check before putting the measuring point into operation:

- "Post-installation check" checklist (see the "Installation" section)
- "Post-connection check" checklist (see the "Electrical connection" section)

9.3 Connecting via FieldCare and DeviceCare

9.3.1 Via PROFINET protocol

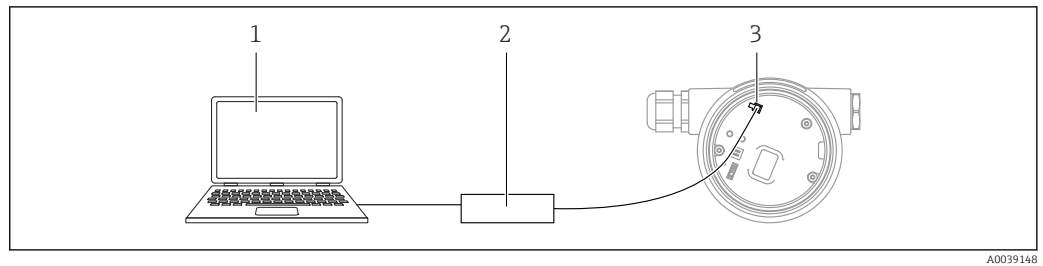


A0046623

12 Options for remote operation via PROFINET protocol

- 1 Computer with Web browser or with operating tool (e.g., DeviceCare)
- 2 Automation system
- 3 Field Xpert SMT70
- 4 Mobile handheld terminal
- 5 Local operation via display module

9.3.2 FieldCare/DeviceCare via service interface (CDI)



- 1 Computer with FieldCare/DeviceCare operating tool
 2 Commubox FXA291
 3 Service interface (CDI) of the device (= Endress+Hauser Common Data Interface)

9.4 Hardware settings

9.4.1 Activating the default IP address

Activating the default IP address via the DIP switch

The device can be set to the default IP address 192.168.1.212 via DIP switches.

1. Set DIP switch 2 on the electronic insert from **OFF** → **ON**.
2. Reconnect the device to the power supply.
 ↳ The default IP address is used once the device is restarted.

9.5 Setting the device name

A measuring point can be quickly identified within a plant on the basis of the **Device tag** parameter and **PROFINET device name** parameter. The **Device tag** parameter, which is specified ex works or defined when ordering, can be changed in the operating menu.

9.5.1 Configuring the "Device tag" parameter via the operating menu

The **Device tag** parameter can be adapted via the operating menu or automation system.
 System → Device management

9.5.2 Configuring the "PROFINET device name" parameter via the operating menu

Application → PROFINET → Configuration

9.5.3 Configuring the "PROFINET device name" parameter via the automation system

The **PROFINET device name** parameter can be adapted individually via the automation system.

- i** When assigning the **PROFINET device name** parameter via the automation system:
 assign the device name in lower case letters.

9.6 Configuring the communication parameters via the software


- IP address
- Subnet mask
- Default gateway





Menu path: System → Connectivity → Ethernet


9.7 Setting the operating language

9.7.1 Local display

Setting the operating language


 To set the operating language, the display first needs to be unlocked:

1. Press the  key for at least 2 s.
 - ↳ A dialog box appears.
2. Unlock the display operation.
3. In the main menu, select the **Language** parameter.
4. Press the  key.
5. Select the desired language with the  key.
6. Press the  key.

 Display operation locks automatically in the following cases:

- after 1 min on the main page if no key has been pressed
- after 10 min within the operating menu if no key has been pressed

Display operation - locking or unlocking

The  key must be pressed for at least 2 seconds in order to lock or unlock the optical keys. Display operation can be locked or unlocked in the dialog that appears.

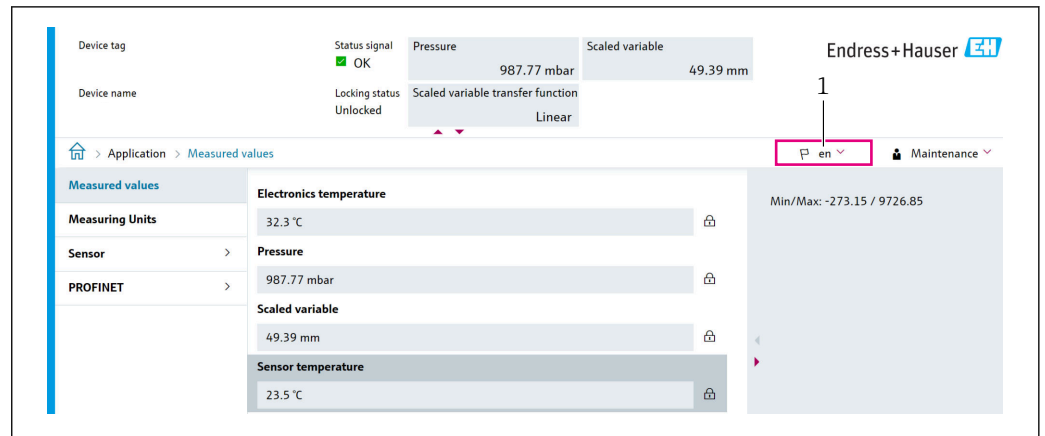
Display operation locks automatically:

- After 1 minute on the main page if no key has been pressed
- After 10 minutes within the operating menu if no key has been pressed

Display operation can be disabled via software:

Menu path: System → Connectivity → Interfaces → Display operation

9.7.2 Web server



A0048882

1 Language setting

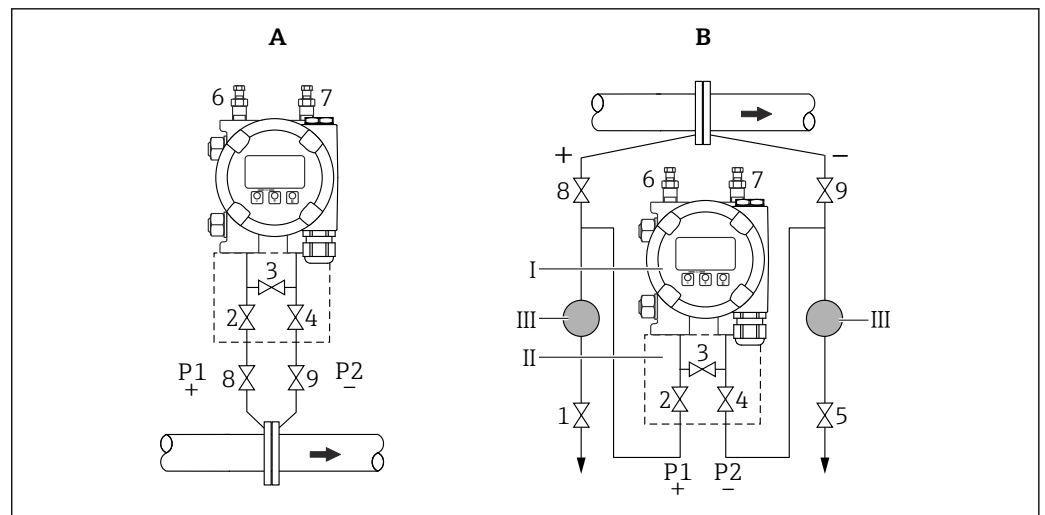
9.7.3 Operating tool

See the description of the relevant operating tool.

9.8 Configuring the device

9.8.1 Differential pressure measurement (e.g. flow measurement)


Before adjusting the device, the piping may need to be cleaned and filled with medium.



A0030036

- A Preferred installation for gases
- B Preferred installation for liquids
- I Device
- II Three-valve manifold
- III Separator
- 1, 5 Drain valves
- 2, 4 Inlet valves
- 3 Equalization valve
- 6, 7 Vent valves on device
- 8, 9 Shutoff valves

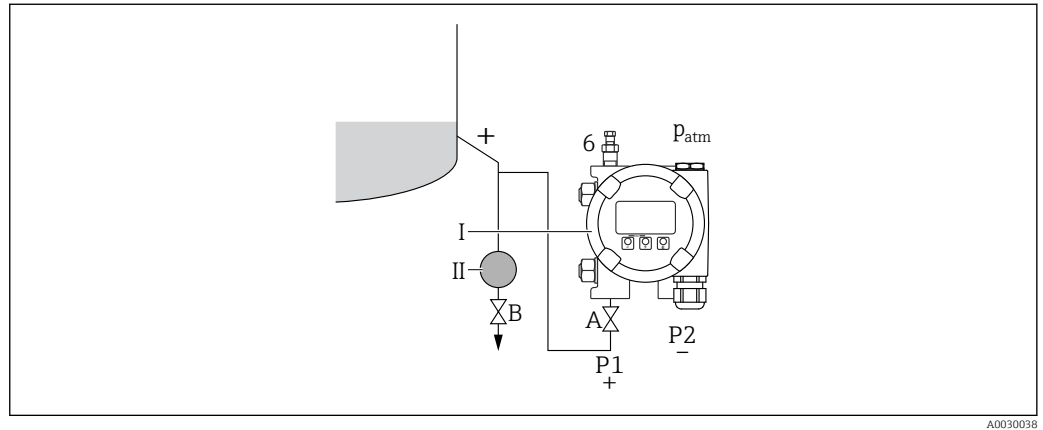
1. Close 3.

2. Fill the measuring system with medium.
 - ↳ Open A, B, 2, 4. Fluid flows in.
 3. Vent device.
 - ↳ Liquids: Open 6 and 7 until the system (piping, valves and side flanges) is completely filled with medium.
 - Gases: Open 6 and 7 until the system (piping, valves and side flanges) is completely filled with gas and free from condensation.
 - Close 6 and 7.
-  Check the adjustment and perform again if necessary.

9.8.2 Level measurement

Open vessel

Before adjusting the device, the piping may need to be cleaned and filled with medium.



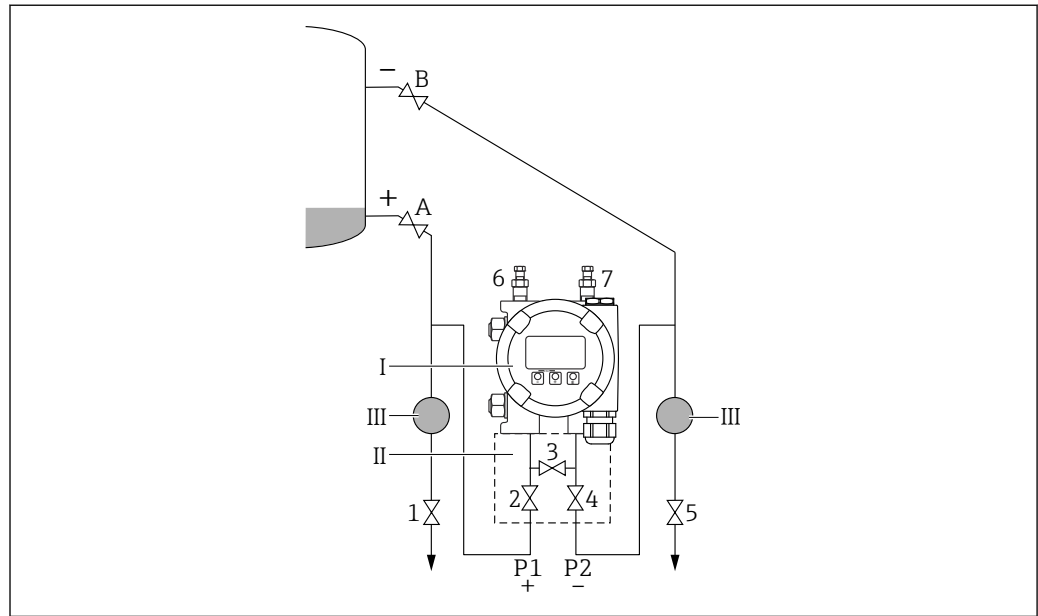
A0030038

- I* Device
- II* Separator
- 6* Vent valve on device
- A* Shutoff valve
- B* Drain valve

1. Fill the vessel to above the lower tapping point.
2. Fill the measuring system with medium.
 - ↳ Open A (shutoff valve).
3. Vent device.
 - ↳ Open 6 until the system (piping, valve and side flange) is completely filled with medium.

Closed vessel

Before adjusting the device, the piping may need to be cleaned and filled with medium.



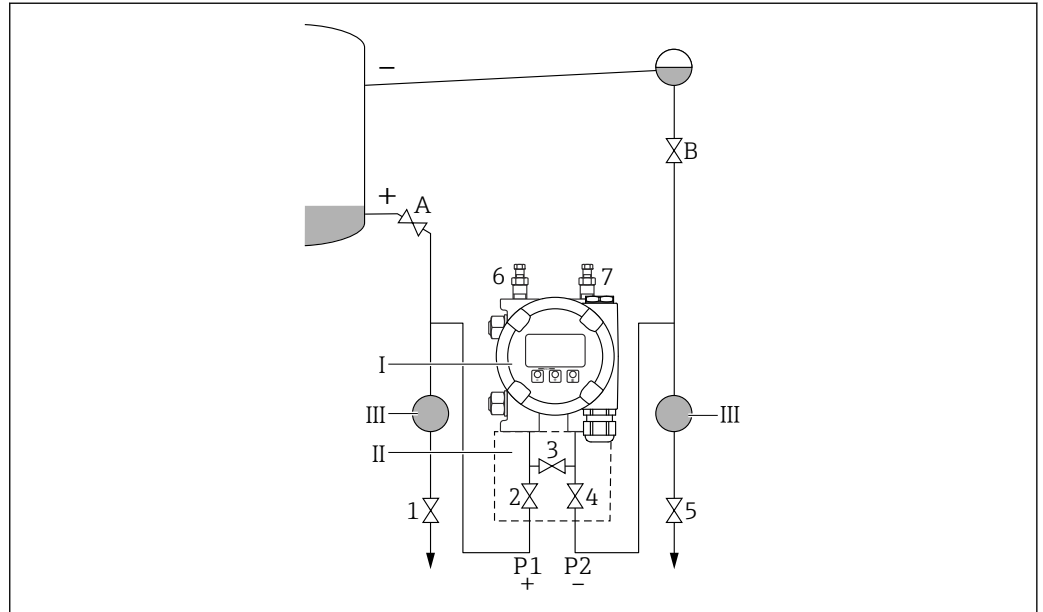
A0030039

- I Device
- II Three-valve manifold
- III Separator
- 1, 5 Drain valves
- 2, 4 Inlet valves
- 3 Equalization valve
- 6, 7 Vent valves on device
- A, B Shutoff valves

1. Fill the vessel to above the lower tapping point.
2. Fill the measuring system with medium.
 - ↳ Close 3 (separate high-pressure side and low-pressure side).
Open A and B (shutoff valves).
3. Vent high-pressure side (empty low-pressure side if necessary).
 - ↳ Open 2 and 4 (introduce fluid on high-pressure side).
Open 6 until the system (piping, valve and side flange) is completely filled with medium.
Open 7 until the system (piping, valve and side flange) is completely empty.

Closed vessel with superimposed vapor

Before adjusting the device, the piping may need to be cleaned and filled with medium.



- I Device
- II Three-valve manifold
- III Separator
- 1, 5 Drain valves
- 2, 4 Inlet valves
- 3 Equalization valve
- 6, 7 Vent valves on device
- A, B Shutoff valves

1. Fill the vessel to above the lower tapping point.
2. Fill the measuring system with medium.
 - ↳ Open A and B (shutoff valves).
Fill the negative pressure piping to the height of the condensate trap.
3. Vent device.
 - ↳ Open 2 and 4 (introduce fluid).
Open 6 and 7 until the system (piping, valve and side flange) is completely filled with medium.

9.8.3 Commissioning with keys on the electronic insert

The following functions are possible via the keys on the electronic insert:

- Position adjustment (zero point correction)
The orientation of the device may cause a pressure shift
This pressure shift can be corrected by a position adjustment
- Resetting the device

Performing position adjustment


1. Device installed in required position and no pressure is applied.
2. Press "Zero" for at least 3 s.
3. When the LED flashes twice, the pressure present has been accepted for position adjustment.

Resetting the device

- ▶ Press and hold the "Zero" key for at least 12 seconds.

9.8.4 Commissioning with the commissioning wizard

In the web server, SmartBlue and on the display, the **Commissioning** wizard is available to guide the user through the initial commissioning steps.

1. Connect the device to the Web server.
 2. Open the device in the Web server.
 - ↳ The dashboard (homepage) of the device is displayed:
 3. In the **Guidance** menu, click the **Commissioning** wizard to open the wizard.
 4. Enter the appropriate value in each parameter or select the appropriate option. These values are written directly to the device.
 5. Click "Next" to go to the next page.
 6. Once all the pages are completed, click "End" to close the **Commissioning** wizard.
-  If the **Commissioning** wizard is canceled before all necessary parameters have been configured, the device may be in an undefined state. In such situations, it is advisable to reset the device to the factory default settings.

Example: Outputting of the flow value at the current output

In the following example, the flow value should be measured and output at the current output.

- Perform position adjustment if necessary
- Output the flow signal 0 to 100 m³/h as a 4 to 20 mA value
100 m³/h corresponds to 30 mbar (0.435 psi)

Menu path: Guidance → Commissioning

- In the **Assign PV** parameter, select the **Scaled variable** option
- In the **Pressure unit** parameter and **Scaled variable unit** parameter, select the desired unit
- In the **Output current transfer function** parameter, select the **Square** option
- **Pressure value 1** parameter / **Scaled variable value 1** parameter
Enter 0 mbar (0 psi) / 0 m³/h
- **Pressure value 2** parameter / **Scaled variable value 2** parameter
Enter 30 mbar (0.435 psi) / 100 m³/h

Proceed as follows if the flow does not have to be displayed as a measured value and only a square root extraction should be output.

Menu path: Guidance → Commissioning

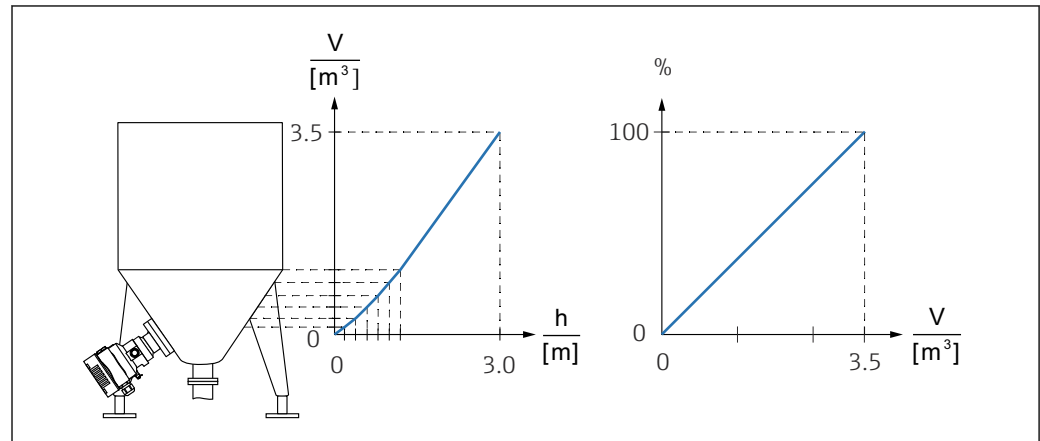
- In the **Assign PV** parameter, select the **Pressure** option
- In the **Output current transfer function** parameter, select the **Square** option
- In the **Lower range value output** parameter, enter 0 mbar (0 psi)
- In the **Upper range value output** parameter, enter 30 mbar (0.435 psi)

9.8.5 Linearization

In the following example, the volume in a tank with a conical outlet should be measured in m^3 .

Prerequisites:

- Points for linearization table are known
- Level calibration is performed
- Linearization characteristic must continually increase or decrease



1. The scaled variable is communicated via PROFINET in the "Analog Input Scaled Variable" module in slot 20 (0x1000). To use a linearized value, use the "Analog Input Scaled Variable" module.
2. The linearization table can be opened via the **Go to linearization table** parameter **Table** option.
 - ↳ Menu path: Application → Sensor → Scaled variable → Scaled variable transfer function
3. Enter the desired table values.
4. The table is activated once all the points in the table have been entered.
5. Activate the table using the **Activate table** parameter.

Result:

The measured value after linearization is displayed.

- Error message F435 "Linearization" and the alarm current appear as long as the table is being entered and until the table is activated
- The 0% value is defined by the smallest point in the table
- The 100% value is defined by the largest point in the table

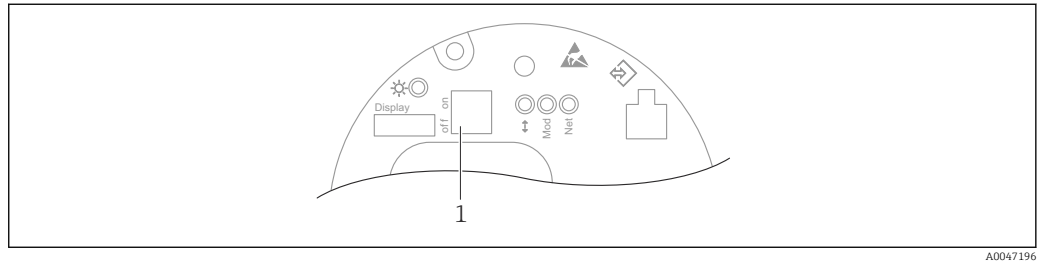
9.9 "Simulation" submenu

With the **Simulation** submenu, the pressure and diagnostic events can be simulated.

Menu path: Diagnostics → Simulation

9.10 Protecting settings from unauthorized access

9.10.1 Hardware locking or unlocking



1 DIP switch for locking and unlocking the device

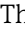
DIP switch 1 on the electronic insert is used to lock or unlock operation.

If operation is locked via the DIP switch, you can only unlock operation again via the DIP switch.

If operation is locked via the operating menu, you can only unlock operation again via the operating menu.

If operation is locked via the DIP switch, the key symbol  appears on the local display.

9.10.2 Display operation - locking or unlocking

The  key must be pressed for at least 2 seconds in order to lock or unlock the optical keys. Display operation can be locked or unlocked in the dialog that appears.

Display operation locks automatically:

- After 1 minute on the main page if no key has been pressed
- After 10 minutes within the operating menu if no key has been pressed

Display operation can be disabled via software:

Menu path: System → Connectivity → Interfaces → Display operation

9.10.3 Software locking or unlocking

 If operation is locked by means of the DIP switch, you can only unlock operation again by means of the DIP switch.

Locking via password in display / FieldCare / DeviceCare / SmartBlue / web server

Access to parameter configuration of the device can be locked by assigning a password. When the device is delivered from the factory, the user role is set to **Maintenance** option. The device can be configured completely with the **Maintenance** option user role. Afterwards, access to the configuration can be locked by assigning a password. The **Maintenance** option switches to the **Operator** option as a result of this locking. The configuration can be accessed by entering the password.

The password is defined under:

System menu **User management** submenu

The user role is changed from the **Maintenance** option to the **Operator** option under:

System → User management

Disabling the lock via the display / FieldCare / DeviceCare / SmartBlue / web server

After entering the password, you can enable parameter configuration of the device as an **Operator** option with the password. The user role then changes to **Maintenance** option.

If necessary, the password can be deleted in the **User management** submenu: System
→ User management

10 Operation

10.1 Reading off the device locking status

Displaying active write protection:

- In the **Locking status** parameter
 - Menu path of local display: at the top operating level
 - Menu path of operating tool: System → Device management
- In the operating tool (FieldCare/DeviceCare) in the DTM header
- In the Web server in the DTM header

10.2 Reading off measured values

Many measured values can be read off in the header of the Web server.

All the measured values can be read off using the **Measured values** submenu.

Navigation

"Application" menu → Measured values

10.3 Adapting the device to process conditions

The following are available for this purpose:

- Basic settings using the **Guidance** menu
- Advanced settings using the **Diagnostics** menu, **Application** menu and **System** menu

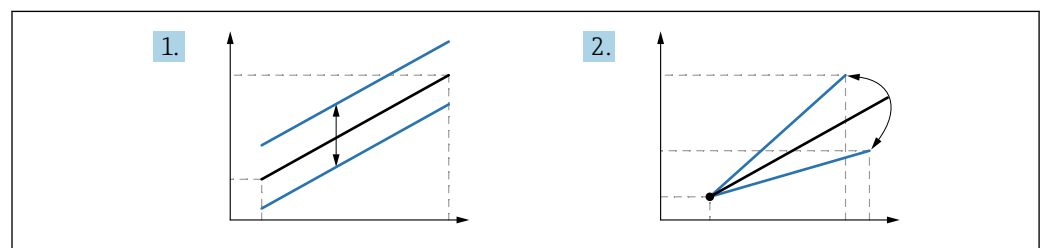
10.3.1 Sensor calibration ¹⁾.

In the course of their life cycle, pressure measuring cells **can** deviate, or drift, ²⁾ from the original pressure characteristic curve. This deviation depends on the operating conditions and can be corrected in the **Sensor calibration** submenu.

Set the value of the zero point shift before the Sensor calibration to 0.00. Application

→ Sensor → Sensor calibration → Zero adjustment offset

1. Apply the lower pressure value (value measured with pressure reference) to the device. Enter this pressure value in the **Lower sensor trim** parameter. Application
→ Sensor → Sensor calibration → Lower sensor trim
 - ↳ The value entered causes a parallel shift of the pressure characteristic in relation to the current Sensor calibration.
2. Apply the upper pressure value (value measured with pressure reference) to the device. Enter this pressure value in the **Upper sensor trim** parameter. Application
→ Sensor → Sensor calibration → Upper sensor trim
 - ↳ The value entered causes a change in the slope of the current Sensor calibration.



A0052045

i The accuracy of the pressure reference determines the accuracy of the device. The pressure reference must be more accurate than the device.

1) Not possible via display operation

2) Deviations caused by physical factors are also known as "Sensor drift".

11 Diagnostics and troubleshooting

11.1 General troubleshooting

11.1.1 General faults

Device is not responding

- Possible cause: Supply voltage does not match the specification on the nameplate
Remedial action: Apply the correct voltage
- Possible cause: The polarity of the supply voltage is wrong
Remedial action: Correct the polarity
- Possible cause: The connecting cables are not in contact with the terminals.
Remedial action: Check the electrical contact between cables and correct if necessary
- Possible cause: Load resistance too high
Remedial action: Increase the supply voltage to reach the minimum terminal voltage

No values visible on the display

- Possible cause: Graphic display is set too bright or too dark
Remedial action: Increase or decrease the contrast with the **Contrast display** parameter
Navigation path: System → Display → Contrast display
- Possible cause: The plug of the display cable is not connected correctly
Remedial action: Connect the plug correctly
- Possible cause: Display is defective
Remedial action: Replace the display

Display cannot be operated

Possible cause: Operation is disabled for security reasons

Web server not available

Possible cause: The Web server is disabled for security reasons

Communication via CDI interface not working

- Possible cause: Wrong setting of the COM port on the computer
Remedial action: Check the setting of the COM port on the computer and correct it if necessary
- CDI interface not available
Possible cause: The CDI interface is disabled for security reasons.

11.1.2 Error - SmartBlue operation

Operation via SmartBlue is only possible on devices that have a display with Bluetooth (optionally available).

Device is not visible in the live list

- Possible cause: Supply voltage too low
Remedial action: Increase the supply voltage.
- Possible cause: No Bluetooth connection available
Remedial action: Enable Bluetooth in the field device via display or software tool and/or in the smartphone/tablet
- Possible cause: Bluetooth signal outside range
Remedial action: Reduce distance between field device and smartphone/tablet
The connection has a range of up to 25 m (82 ft)
- Possible cause: Geopositioning is not enabled on Android devices or is not permitted for the SmartBlue app.
Remedial action: Enable/permit the geopositioning service on Android device for the SmartBlue app

Device appears in the live list but a connection cannot be established

- Possible cause: The device is already connected with another smartphone/tablet via Bluetooth.

Only one point-to-point connection is permitted

Remedial action: Disconnect the smartphone/tablet from the device

- Possible cause: Incorrect user name and password

Remedial action: The standard user name is "admin" and the password is the device serial number indicated on the device nameplate (only if the password was not changed by the user beforehand)

If the password has been forgotten:

Connection via SmartBlue not possible

- Possible cause: Incorrect password entered

Remedial action: Enter the correct password, paying attention to lower/upper case

- Possible cause: Forgotten password

Remedy:

No communication with device via SmartBlue

- Possible cause: Supply voltage too low

Remedial action: Increase the supply voltage.

- Possible cause: No Bluetooth connection available

Remedial action: Enable the Bluetooth function on the smartphone, tablet and device

- Possible cause: The device is already connected with another smartphone/tablet

Remedial action: Disconnect the device from the other smartphone/tablet

- Ambient conditions (e.g. walls/tanks) disturbing the Bluetooth connection

Remedial action: Establish direct line-of-sight connection

- Display does not have Bluetooth

Device cannot be operated via SmartBlue

- Possible cause: Incorrect password entered

Remedial action: Enter the correct password, paying attention to lower/upper case

- Possible cause: Forgotten password

Remedy:

- Possible cause: **Operator** option has no authorization

Remedial action: Change to the **Maintenance** option

11.1.3 Corrective action

Take the following measures if an error message is displayed:

- Check the cable/power supply.
- Check the plausibility of the pressure value.
- Restart the device.
- Perform a reset (the device may need to be reconfigured).

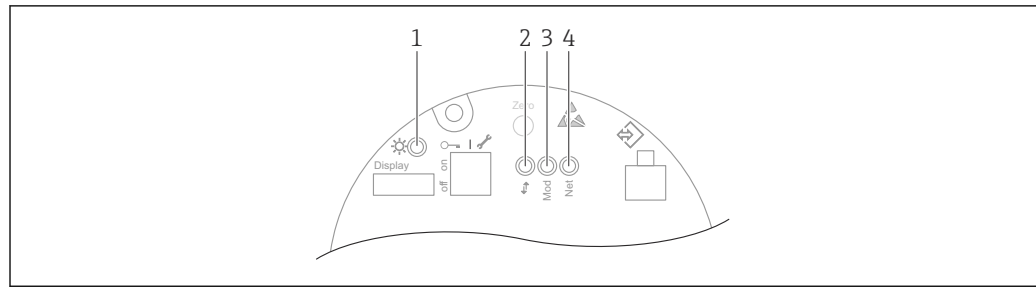
If the measures do not rectify the problem, contact your Endress+Hauser office.

11.1.4 Additional tests

If no clear cause of the error can be identified or the source of the problem can be both the device and the application, the following additional tests can be performed:

1. Check the digital pressure value (display, PROFINET, etc.).
2. Check that the device concerned is functioning correctly. Replace the device if the digital value does not correspond to the expected pressure value.
3. Switch on the simulation and check the measured value in Pressure AI, Slot 1/Subslot 1. Replace the main electronics if the displayed value does not correspond to the simulated value.

11.2 Diagnostics information via LED



A0046179

Item	LED	Meaning
1	Off	No power
	LED flashes green	<ul style="list-style-type: none"> Device commissioning until measured value available Device reset across all customer interfaces
	LED permanently lit green	Everything OK
	LED off briefly	Key operation
2	Off	No electricity or Ethernet Link
	LED permanently lit yellow	Connection established
	LED flashing yellow	<ul style="list-style-type: none"> After every data request from host: OFF/ON Self-test during start-up ¹⁾
3	Off	No power
	LED permanently lit green	Everything OK
	LED flashes red	"Warning"-type diagnostic active
	LED permanently lit red	"Alarm"-type diagnostic active
	LED flashes green and red alternately	Self-test during start-up ²⁾
4	Off	No power or IP address not available
	LED flashes green	IP address configured but no connection established
	LED permanently lit green	<ul style="list-style-type: none"> Profinet: The device has at least one established IO application relationship CIP: An IP address is configured, at least one CIP connection (any transport class) is established and an Exclusive Owner connection has no timeout
	LED flashes red	Communication error between device and controller
	LED permanently lit red	CIP: Duplicate IP
	LED flashes green and red alternately	Self-test during start-up ²⁾

1) LED is lit yellow for 0.25 seconds, switches off and remains in this state until the power-up test is completed.

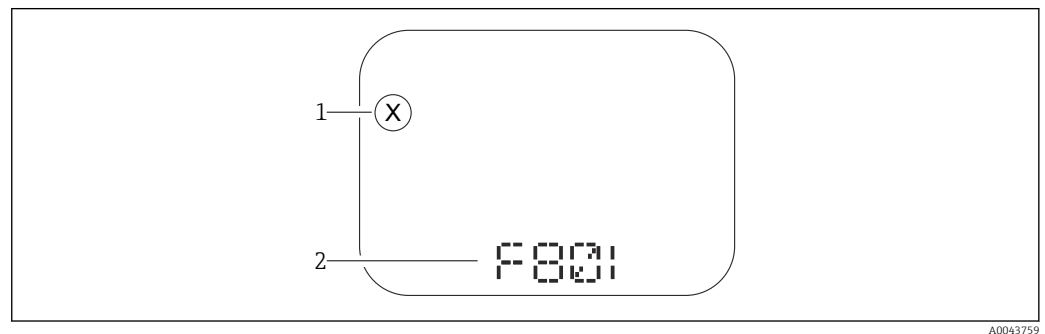
2) LED is lit green for 0.25 seconds, is then lit red for 0.25 seconds, switches off and remains in this state until the power-up test is completed.

11.3 Diagnostic formation on local display

11.3.1 Diagnostic message

Measured value display and diagnostic message in the event of a failure

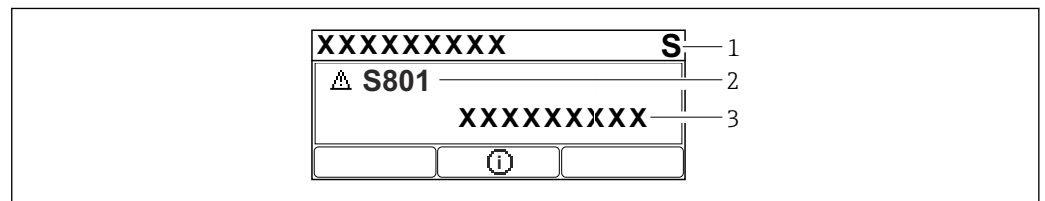
Failures detected by the device's self-monitoring system are displayed as a diagnostic message in alternation with the unit.



A0043759

- 1 Status signal
2 Status symbol with diagnostic event

Faults detected by the device's self-monitoring system are displayed as a diagnostic message in alternation with the measured value display.



A0043103

- 1 Status signal
2 Status symbol with diagnostic event
3 Event text

Status signals

F

"Failure (F)" option

A device error has occurred. The measured value is no longer valid.

C

"Function check (C)" option

The device is in the service mode (e.g. during a simulation).

S

"Out of specification (S)" option

The device is operated:

- Outside of its technical specifications (e.g. during startup or a cleaning)
- Outside of the configuration performed by the user (e.g. level outside configured span)

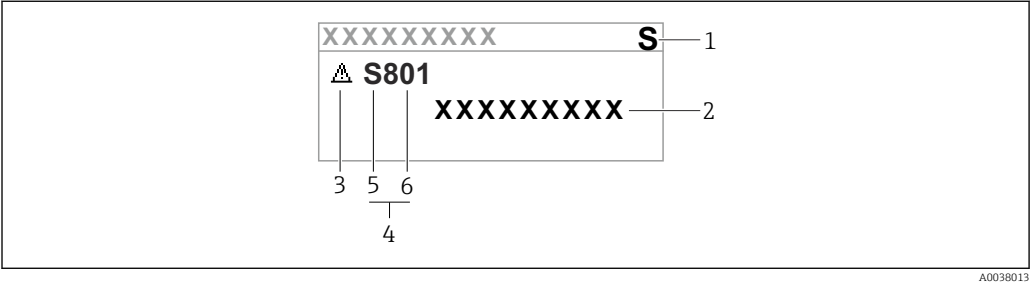
M

"Maintenance required (M)" option

Maintenance required. The measured value remains valid.

Diagnostic event and event text

The failure can be identified by means of the diagnostic event. The event text helps you by providing information about the failure. In addition, the associated status symbol is displayed in front of the diagnostic event.



- 1 Status signal
- 2 Event text
- 3 Status symbol
- 4 Diagnostic event
- 5 Status signal
- 6 Diagnostic number

If several diagnostic events are pending at the same time, only the diagnostic message with the highest priority is displayed.

"Active diagnostics" parameter

- key
Opens the message about the remedial actions.
- key
Acknowledge warnings.
- key
Back to operating menu.

11.4 Diagnostic information in the Web browser

11.4.1 Diagnostic options



Any faults detected by the device are displayed in the header of the Web browser once the user has logged on.


In addition, diagnostic events that have occurred can be displayed in the **Diagnostics** menu.

Status signals

The status signals provide information on the state and reliability of the device by categorizing the cause of the diagnostic information (diagnostic event).

Symbol	Meaning
	Failure A device error has occurred Measured value is no longer valid
	Function check Device is in the service mode (e.g. during a simulation)

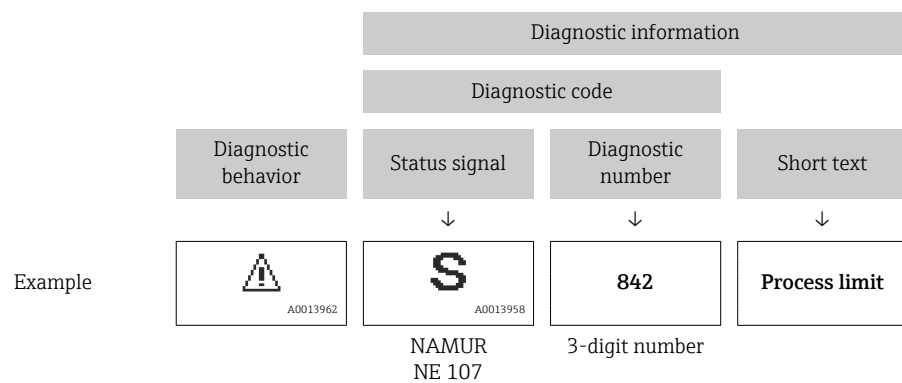
Symbol	Meaning
	Out of specification Device is being operated outside its technical specification limits (e.g. outside the process temperature range)
	Maintenance required Maintenance is required The measured value remains valid

 The status signals are categorized in accordance with VDI/VDE 2650 and NAMUR Recommendation NE 107.

Diagnostic information

Devices without a display: The fault can be identified using the diagnostic information. The short text helps you by providing information about the fault. In addition, the corresponding symbol for the diagnostic behavior is displayed in front of the diagnostic information on the local display.

Devices with a display:



Diagnostic number	Short text	Remedy instructions	Status signal [from the factory]	Diagnostic behavior [from the factory]
101	Sensor temperature	1. Check process temperature 2. Check ambient temperature	F	Alarm
102	Sensor incompatible error	1. Restart device 2. Contact service	F	Alarm
Diagnostic of electronic				
232	Real time clock defective	Replace main electronics	M	Warning
242	Firmware incompatible	1. Check software 2. Flash or change main electronic module	F	Alarm
252	Module incompatible	1. Check if correct electronic module is plugged 2. Replace electronic module	F	Alarm
263	Incompatibility detected	Check electronic module type	M	Warning
270	Main electronics defective	Replace main electronics	F	Alarm
272	Main electronics faulty	1. Restart device 2. Contact service	F	Alarm
273	Main electronics defective	Replace main electronics	F	Alarm
282	Data storage inconsistent	Restart device	F	Alarm
283	Memory content inconsistent	1. Restart device 2. Contact service	F	Alarm
287	Memory content inconsistent	1. Restart device 2. Contact service	M	Warning
331	Firmware update failed	1. Update firmware of device 2. Restart device	M	Warning
332	Writing in HistoROM backup failed	1. Replace user interface board 2. Ex d/XP: replace transmitter	F	Alarm
387	HistoROM data faulty	Contact service organization	F	Alarm
388	Electronics and HistoROM defective	1. Restart device 2. Replace electronics and HistoROM 3. Contact service	F	Alarm
Diagnostic of configuration				
410	Data transfer failed	1. Retry data transfer 2. Check connection	F	Alarm
412	Processing download	Download active, please wait	S	Warning
435	Linearization faulty	Check data points and min span	F	Alarm
436	Date/time incorrect	Check date and time settings.	M	Warning ¹⁾
437	Configuration incompatible	1. Update firmware 2. Execute factory reset	F	Alarm
438	Dataset different	1. Check dataset file 2. Check device parameterization 3. Download new device parameterization	M	Warning
484	Failure mode simulation active	Deactivate simulation	C	Alarm
485	Process variable simulation active	Deactivate simulation	C	Warning

Diagnostic number	Short text	Remedy instructions	Status signal [from the factory]	Diagnostic behavior [from the factory]
495	Diagnostic event simulation active	Deactivate simulation	S	Warning
500	Process alert pressure	1. Check process pressure 2. Check configuration of process alert	C	Warning ¹⁾
501	Process alert scaled variable	1. Check process conditions 2. Check scaled variable configuration	C	Warning ¹⁾
502	Process alert temperature	1. Check process temperature 2. Check configuration of process alert	C	Warning ¹⁾
Diagnostic of process				
801	Supply voltage too low	Increase supply voltage	S	Warning
802	Supply voltage too high	Decrease supply voltage	S	Warning
811	APL connection faulty	Connect field device only to APL spur port	F	Alarm
822	Sensor temperature out of range	1. Check process temperature 2. Check ambient temperature	S	Warning
825	Electronics temperature	1. Check ambient temperature 2. Check process temperature	S	Warning
841	Operating range	1. Check the process pressure 2. Check the sensor range	S	Warning ¹⁾
900	High signal noise detected	1. Check impulse line 2. Check valve position 3. Check process	S	Warning ¹⁾
901	Low signal noise detected	1. Check impulse line 2. Check valve position 3. Check process	S	Warning ¹⁾
902	Min signal noise detected	1. Check impulse line 2. Check valve position 3. Check process	S	Warning ¹⁾
906	Out of range signal detected	1. Process Information. No action 2. Rebuild baseline 3. Adapt signal range thresholds	S	Warning ¹⁾

1) Diagnostic behavior can be changed.

11.6 Event logbook

11.6.1 Event history

The **Event list** submenu provides a chronological overview of the event messages that have occurred.³⁾

Navigation path

Diagnostics → Event logbook

A maximum of 100 event messages can be displayed in chronological order.

3) If operating via FieldCare, the event list can be displayed with the "Event List/HistoROM" function in FieldCare

The event history includes entries for:

- Diagnostic events
- Information events

In addition to the operating time when the event occurred, each event is also assigned a symbol that indicates whether the event has occurred or is finished:

- Diagnostic event
 - ☹: Occurrence of the event
 - ⌚: End of the event
- Information event
 - ☹: Occurrence of the event

11.6.2 Filtering the event logbook

Filters can be used to determine which category of event messages is displayed in the **Event list** submenu.

Navigation path

Diagnostics → Event logbook

11.6.3 Overview of information events

Info number	Info name
I1000	----- (Device ok)
I1079	Sensor changed
I1089	Power on
I1090	Configuration reset
I1091	Configuration changed
I11036	Date/time set successfully
I11074	Device verification active
I1110	Write protection switch changed
I1151	History reset
I1154	Reset terminal voltage min/max
I1155	Reset electronics temperature
I1157	Memory error event list
I1256	Display: access status changed
I1264	Safety sequence aborted
I1335	Firmware changed
I1397	Fieldbus: access status changed
I1398	CDI: access status changed
I1440	Main electronic module changed
I1444	Device verification passed
I1445	Device verification failed
I1461	Sensor verification failed
I1512	Download started
I1513	Download finished
I1514	Upload started
I1515	Upload finished
I1551	Assignment error fixed

Info number	Info name
I1552	Failed: Main electronic verification
I1554	Safety sequence started
I1555	Safety sequence confirmed
I1556	Safety mode off
I1663	Power off
I1666	Clock synchronized
I1712	New flash file received
I1956	Reset


11.7 Resetting the device

11.7.1 Reset password via operating tool

Enter a code to reset the current 'Maintenance' password.
The code is delivered by your local support.

Navigation: System → User management → Reset password → Reset password

Reset password


 For details see the "Description of device parameters" documentation.

11.7.2 Reset device via operating tool

Reset the device configuration - either entirely or in part - to a defined state

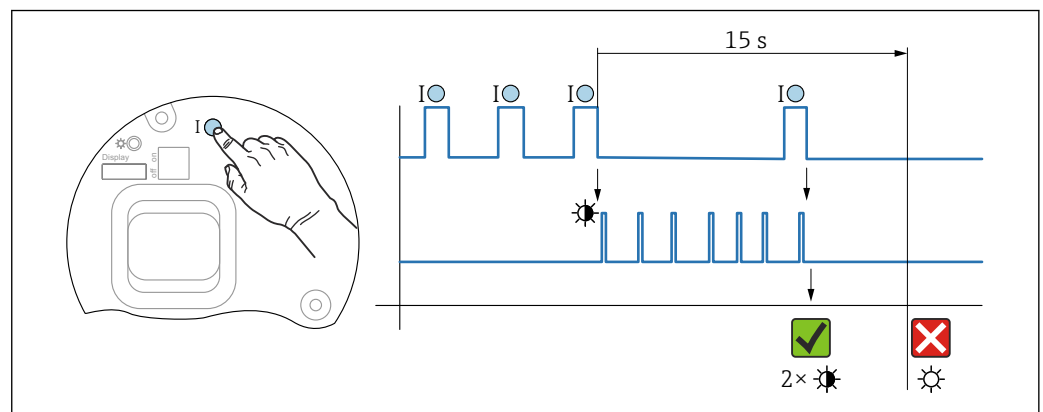
Navigation: System → Device management → Reset device


Reset device parameter

 For details see the "Description of device parameters" documentation.

11.7.3 Resetting the device via keys on the electronic insert

Reset password



 13 Sequence for resetting the password

A0050210

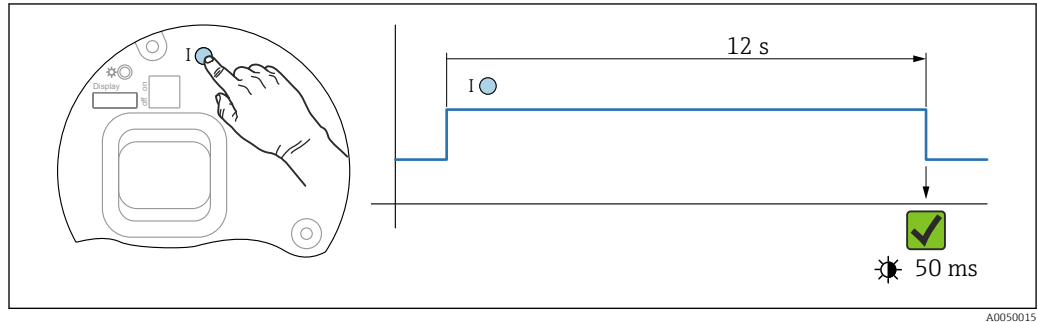
Delete/reset the password

1. Press operating key I three times.
↳ The Reset Password function is started; the LED flashes.

2. Press operating key **I** once within 15 s.
 - ↳ The password is reset, the LED flashes briefly.

If operating key **I** is not pressed within 15 s, the action is canceled and the LED is no longer lit.

Resetting the device to the factory setting



14 Sequence for resetting to factory setting

Resetting the device to the factory setting

- ▶ Press operating key **I** for at least 12 s.
 - ↳ Device data are reset to the factory setting; the LED flashes briefly.

11.8 Firmware history

i The firmware version can explicitly be ordered via the product structure. This makes it possible to ensure the compatibility of the firmware version with an existing or planned system integration.

11.8.1 Version 01.00.zz

Original software

11.8.2 Version 01.01.zz

- Heartbeat Technology extended functionality
- HART condensed status

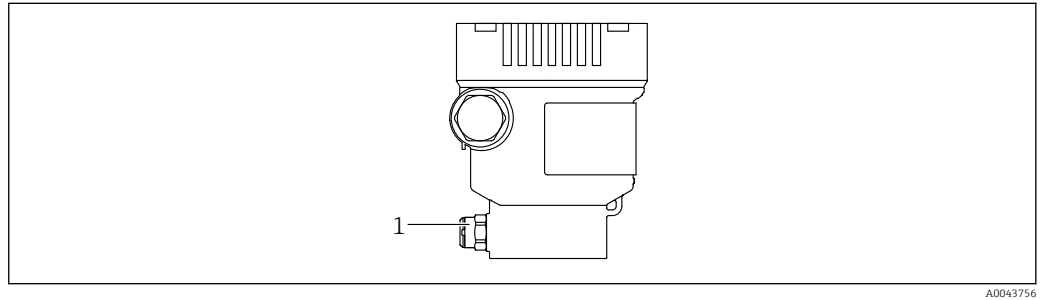
12 Maintenance

12.1 Maintenance work

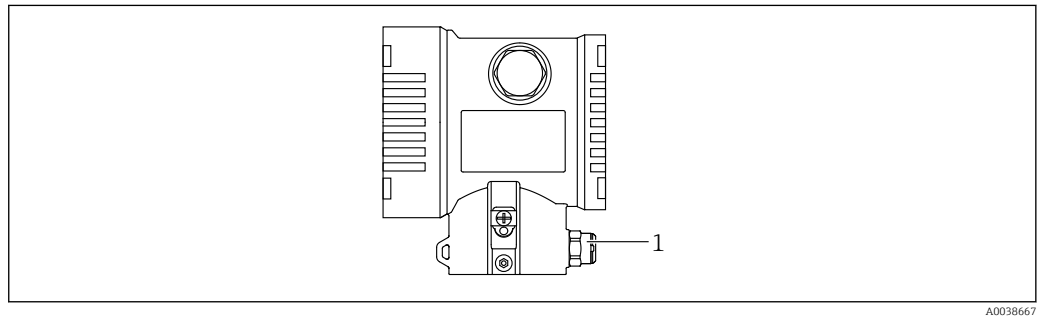
This chapter describes the maintenance of physical device components.

12.1.1 Pressure compensation filter

Keep the pressure compensation filter (1) free from contamination.



1 Pressure compensation filter



1 Pressure compensation filter

12.1.2 Exterior cleaning

Notes on cleaning

- The cleaning agents used should not corrode the surfaces and the seals
- Mechanical damage to the membrane, e.g. due to sharp objects, must be avoided
- Observe the degree of protection of the device

13 Repair

13.1 General information

13.1.1 Repair concept

Under the Endress+Hauser repair concept, devices have a modular design and repairs are carried out by Endress+Hauser Service or by properly trained customers.

Spare parts are grouped into logical kits with the associated replacement instructions.

For more information on service and spare parts contact Endress+Hauser Service.

13.1.2 Repair of Ex-certified devices

WARNING

Incorrect repair can compromise electrical safety!

Explosion Hazard!

- ▶ Repairs to Ex-certified devices must be carried out by Endress+Hauser Service or by specialist personnel according to national regulations.
- ▶ Relevant standards and national regulations on hazardous areas, safety instructions and certificates must be observed.
- ▶ Use only original Endress+Hauser spare parts.
- ▶ Please note the device designation on the nameplate. Only identical parts may be used as replacements.
- ▶ Carry out repairs according to the instructions.
- ▶ Only the Endress+Hauser service team is permitted to modify a certified device and convert it to another certified version.

13.2 Spare parts

- Some replaceable device components are identified by a spare part nameplate. This contains information about the spare part.
- All the spare parts for the measuring device, along with the order code, are listed in the *Device Viewer* (www.endress.com/deviceviewer) and can be ordered. If available, users can also download the associated Installation Instructions.



Device serial number:

- Located on the device and spare part nameplate.
- Can be read out via the device software.

13.3 Replacement

CAUTION

Data upload/download is not permitted if the device is used for safety-related applications.

- ▶ After an entire device or an electronics module has been replaced, the parameters can be downloaded to the device again via the communication interface. For this, the data must have been uploaded to the PC beforehand using the "FieldCare/DeviceCare" software.

13.3.1 HistoROM

It is not necessary to perform a new device calibration after replacing the display or transmitter electronics. The parameters are saved in the HistoROM.



After replacing the transmitter electronics, remove the HistoROM and insert it into the new replacement part.

13.4 Return

The device must be returned in the event of a factory calibration, or if the wrong device has been ordered or delivered.

As an ISO-certified company and also due to legal regulations, Endress+Hauser is obliged to follow certain procedures when handling any returned products that have been in contact with medium. To ensure swift, safe and professional device returns, please read the return procedures and conditions on the Endress+Hauser website <http://www.endress.com/support/return-material>.

- ▶ Select country.
 - ↳ The website of the responsible sales office opens with all the relevant information relating to returns.
- 1. If the desired country is not listed:
Click on the "Choose your location" link.
 - ↳ An overview of Endress+Hauser sales offices and representatives opens.
- 2. Contact the Endress+Hauser sales organization responsible for your area.

13.5 Disposal



If required by the Directive 2012/19/EU on waste electrical and electronic equipment (WEEE), the product is marked with the depicted symbol in order to minimize the disposal of WEEE as unsorted municipal waste. Do not dispose of products bearing this marking as unsorted municipal waste. Instead, return them to the manufacturer for disposal under the applicable conditions.

14 Accessories

14.1 Device-specific accessories


14.1.1 Mechanical accessories

- Mounting bracket for housing
- Mounting bracket for manifolds
- Manifolds:
 - Manifolds can be ordered as an **enclosed** accessory (screws and seals for mounting are enclosed)
 - Manifolds can be ordered as a **mounted** accessory (mounted manifolds are supplied with a documented leak test)
 - Certificates (e.g. 3.1 material certificate and NACE) and tests (e.g. PMI and pressure test) that are ordered with the device apply for the transmitter and the manifold.
 - During the operating life of the valves, it may be necessary to re-tighten the pack.
- Oval flange adapter
- Calibration adapter 5/16"-24 UNF, to screw into vent valves
- Weather protective cover


 For technical data (e.g. materials, dimensions or order numbers), see the accessory document SD01553P.

14.1.2 Plug connectors

- Plug connector M12 90 deg, IP67 5m cable, union nut, Cu Sn/Ni
- Plug connector M12, IP67 union nut, Cu Sn/Ni
- Plug connector M12, 90 deg IP67 union nut, Cu Sn/Ni

 The IP protection classes are only maintained if the dummy cap is used or the cable is connected.

14.1.3 Weld-in accessory

 For details, refer to TI00426F/00/EN "Weld-in adapters, process adapters and flanges".

14.2 Device Viewer

All the spare parts for the device, along with the order code, are listed in the *Device Viewer* (<https://www.endress.com/de/pages/supporting-tools/device-viewer>).

15 Technical data

15.1 Input

Measured variable	Measured process variables <ul style="list-style-type: none"> ■ Differential pressure ■ Absolute pressure ■ Gauge pressure
Measuring range	Depending on the device configuration, the maximum working pressure (MWP) and the overpressure limit (OPL) can deviate from the values in the tables.

Standard: PN 160 / 16 MPa / 2400 psi

Measuring cell	Maximum measuring range		Smallest calibratable span (preset at factory) ^{1) 2)}
	lower (LRL)	upper (URL)	
[mbar (psi)]	[mbar (psi)]	[mbar (psi)]	[mbar (psi)]
10 (0.15)	-10 (-0.15)	+10 (+0.15)	0.25 (0.00375)
30 (0.45)	-30 (-0.45)	+30 (+0.45)	0.3 (0.0045)
100 (1.5)	-100 (-1.5)	+100 (+1.5)	1 (0.015)
500 (7.5)	-500 (-7.5)	+500 (+7.5)	5 (0.075)
3000 (45)	-3000 (-45)	+3000 (+45)	30 (0.45)
16000 (240)	-16000 (-240)	+16000 (+240)	160 (2.4)
40000 (600)	-40000 (-600)	+40000 (+600)	400 (6)

1) Turn down > 100:1 on request or can be configured at the device

2) The maximum TD is 5:1 in the case of platinum.

Standard: PN 160 / 16 MPa / 2400 psi

Measuring cell	MWP	OPL		Burst pressure ^{1) 2)}
		on one side	on both sides	
[mbar (psi)]	[bar (psi)]	[bar (psi)]	[bar (psi)]	[bar (psi)]
10 (0.15)	100 (1500)	150 (2250)	150 (2250)	690 (10005)
30 (0.45)	100 (1500)	150 (2250)	150 (2250)	690 (10005)
100 (1.5)	160 (2400) ³⁾	160 (2400)	240 (3600)	690 (10005)
500 (7.5)	160 (2400) ³⁾	160 (2400)	240 (3600)	690 (10005)
3000 (45)	160 (2400) ³⁾	160 (2400)	240 (3600)	690 (10005)
16000 (240)	160 (2400) ³⁾	160 (2400)	240 (3600)	690 (10005)
40000 (600)	160 (2400) ^{3) 4)}	"+" side: 160 (2400) "-" side: 100 (1500)	240 (3600)	690 (10005)

1) Applies to the process seal materials FKM, PTFE, FFKM, EPDM and for pressure applied on both sides.

2) If the side vent valves (sv) and PTFE seal option is selected, the burst pressure is 600 bar (8 700 psi)

3) If CRN approval is selected, the following limited MWP values apply: with copper seals: 124 bar (1 798.5 psi)

4) If pressure is applied on the negative side only, the MWP is 100 bar (1 500 psi).

Standard: PN 250 / 25 MPa / 3626 psi

Measuring cell	Maximum measuring range		Smallest calibratable span (preset at factory) ^{1) 2)}
	Lower (LRL)	Upper (URL)	
[mbar (psi)]	[mbar (psi)]	[mbar (psi)]	[mbar (psi)]
100 (1.5)	-100 (-1.5)	+100 (+1.5)	1 (0.015)
500 (7.5)	-500 (-7.5)	+500 (+7.5)	5 (0.075)
3000 (45)	-3000 (-45)	+3000 (+45)	30 (0.45)
16000 (240)	-16000 (-240)	+16000 (+240)	160 (2.4)
40000 (600)	-40000 (-600)	+40000 (+600)	400 (6)

1) Turn down > 100:1 on request or can be configured at the device

2) The maximum TD is 5:1 in the case of platinum.

Standard: PN 250 / 25 MPa / 3626 psi

Measuring cell	MWP ¹⁾	OPL		Burst pressure ^{2) 3) 4)}
		on one side	on both sides	
[mbar (psi)]	[bar (psi)]	[bar (psi)]	[bar (psi)]	[bar (psi)]
100 (1.5)	250 (3626) ⁵⁾	250 (3626)	375 (5625)	1320 (19140)
500 (7.5)	250 (3626) ⁵⁾	250 (3626)	375 (5625)	1320 (19140)
3000 (45)	250 (3626) ⁵⁾	250 (3626)	375 (5625)	1320 (19140)
16000 (240)	250 (3626) ⁵⁾	250 (3626)	375 (5625)	1320 (19140)
40000 (600)	250 (3626) ^{5) 6)}	"+" side: 250 (3626) "-" side: 100 (1500)	375 (5625)	1320 (19140)

1) MWP only on both sides.

2) Applies to the process seal materials FKM, FFKM, EPDM and for pressure applied on both sides.

3) If the side vent valves (sv) option is selected, the burst pressure is 690 bar (10 005 psi).

4) For the process seal material PTFE, the burst pressure is 1 250 bar (18 125 psi).

5) If a CRN approval is selected, the following limited MWPs apply: with side venting: 179 bar (2 596.2 psi); with copper seals: 124 bar (1 798.5 psi)

6) If pressure is applied on the negative side only, the MWP is 100 bar (1 500 psi).

Option PN 320 / 32 MPa / 4641 psi

Measuring cell	Maximum measuring range		Smallest calibratable span (preset at factory) ^{1) 2)}
	lower (LRL)	upper (URL)	
[mbar (psi)]	[mbar (psi)]	[mbar (psi)]	[mbar (psi)]
100 (1.5)	-100 (-1.5)	+100 (+1.5)	1 (0.015)
500 (7.5)	-500 (-7.5)	+500 (+7.5)	5 (0.075)
3000 (45)	-3000 (-45)	+3000 (+45)	30 (0.45)
16000 (240)	-16000 (-240)	+16000 (+240)	160 (2.4)
40000 (600)	-40000 (-600)	+40000 (+600)	400 (6)

1) Turn down > 100:1 on request

2) The maximum TD is 5:1 in the case of platinum.

Option PN 320 / 32 MPa / 4641 psi

Measuring cell	MWP ¹⁾	OPL		Burst pressure ^{2) 3) 4)}
		on one side	on both sides	
[mbar (psi)]	[bar (psi)]	[bar (psi)]	[bar (psi)]	[bar (psi)]
100 (1.5)	320 (4641) ⁵⁾	320 (4641)	480 (7200)	1320 (19140)
500 (7.5)	320 (4641) ⁵⁾	320 (4641)	480 (7200)	1320 (19140)
3000 (45)	320 (4641) ⁵⁾	320 (4641)	480 (7200)	1320 (19140)
16000 (240)	320 (4641) ⁵⁾	320 (4641)	480 (7200)	1320 (19140)
40000 (600)	320 (4641) ^{5) 6)}	"+" side: 320 (4641) "-" side: 100 (1500)	480 (7200)	1320 (19140)

- 1) MWP only on both sides.
- 2) Applies for the process seal materials FKM, FFKM, EPDM and for pressure applied at both sides.
- 3) If the side vent valves (sv) option is selected, the burst pressure is 690 bar (10005 psi).
- 4) For the process seal material PTFE (PN250), the burst pressure is 1250 bar (18125 psi).
- 5) If CRN approval is selected, the following limited MWP values apply: without side vent valves: 262 bar (3800 psi); with side vent: 179 bar (2596.2 psi); with copper seals: 124 bar (1798.5 psi)
- 6) If pressure is applied on the negative side only, the MWP is 100 bar (1500 psi).

Option PN 420 / 42 MPa / 6092 psi

Measuring cell	Maximum measuring range		Smallest calibratable span (preset at factory) ^{1) 2)}
	lower (LRL)	upper (URL)	
[mbar (psi)]	[mbar (psi)]	[mbar (psi)]	[mbar (psi)]
100 (1.5)	-100 (-1.5)	+100 (+1.5)	1 (0.015)
500 (7.5)	-500 (-7.5)	+500 (+7.5)	5 (0.075)
3000 (45)	-3000 (-45)	+3000 (+45)	30 (0.45)
16000 (240)	-16000 (-240)	+16000 (+240)	160 (2.4)
40000 (600)	-40000 (-600)	+40000 (+600)	400 (6)

- 1) Turn down > 100:1 on request
- 2) The maximum TD is 5:1 in the case of platinum.

Option PN 420 / 42 MPa / 6092 psi

Measuring cell	MWP ¹⁾	OPL		Burst pressure ^{2) 3) 4)}
		on one side	on both sides	
[mbar (psi)]	[bar (psi)]	[bar (psi)]	[bar (psi)]	[bar (psi)]
100 (1.5)	420 (6092) ⁵⁾	420 (6092)	630 (9450)	1320 (19140)
500 (7.5)	420 (6092) ⁵⁾	420 (6092)	630 (9450)	1320 (19140)
3000 (45)	420 (6092) ⁵⁾	420 (6092)	630 (9450)	1320 (19140)
16000 (240)	420 (6092) ⁵⁾	420 (6092)	630 (9450)	1320 (19140)
40000 (600)	420 (6092) ^{5) 6)}	"+" side: 420 (6092) "-" side: 100 (1500)	630 (9450)	1320 (19140)

- 1) MWP only on both sides.
- 2) Applies for the process seal materials FKM, FFKM, EPDM and for pressure applied at both sides.
- 3) If the side vent valves (sv) option is selected, the burst pressure is 690 bar (10005 psi).
- 4) For the process seal material PTFE (PN250), the burst pressure is 1250 bar (18125 psi).
- 5) If CRN approval is selected, the following limited MWP values apply: without side vent valves: 262 bar (3800 psi); with side vent: 179 bar (2596.2 psi); with copper seals: 124 bar (1798.5 psi)
- 6) If pressure is applied on the negative side only, the MWP is 100 bar (1500 psi).

PMD75B: optionally available as a gauge or absolute pressure measuring cell

Measuring cell	Maximum measuring range		Smallest calibratable span (preset at factory) ¹⁾
	lower (LRL)	upper (URL)	
bar (psi)	bar (psi)	bar (psi)	bar (psi)
160 (2400) gauge	-1 (-15)	160 (2400)	40 (600)
160 (2400) abs	0	160 (2400)	4 (60)
250 (3750) gauge ²⁾	-1 (-15)	250 (3750)	40 (600)
250 (3750) abs ²⁾	0	250 (3750)	4 (60)

1) The maximum TD is 5:1 in the case of platinum.

2) The 250 bar measuring cell can be used over the entire measuring range with up to 100,000 load changes without specification restrictions.

PMD75B: optionally available as a gauge or absolute pressure measuring cell

Measuring cell	MWP	OPL		Burst pressure ^{1) 2) 3)}
		on one side	on both sides	
bar (psi)	bar (psi)	bar (psi)		[bar (psi)]
160 (2400) gauge	160 (2400) ⁴⁾	240 (3600)	- ⁵⁾	1320 (19140)
160 (2400) abs	160 (2400) ⁴⁾	240 (3600)	- ⁵⁾	1320 (19140)
250 (3750) gauge ⁶⁾	250 (3750) ⁴⁾	375 (5625)	- ⁵⁾	1320 (19140)
250 (3750) abs ⁶⁾	250 (3750) ⁴⁾	375 (5625)	- ⁵⁾	1320 (19140)

1) Applies for the process seal materials FKM, FFKM, EPDM and for pressure applied at both sides.

2) If the side vent valves (sv) option is selected, the burst pressure is 690 bar (10 005 psi).

3) For the process seal material PTFE (PN250), the burst pressure is 1 250 bar (18 125 psi).

4) If CRN approval is selected, the following limited MWP values apply: without side vent valves: 262 bar (3 800 psi); with side vent: 179 bar (2 596.2 psi); with copper seals: 124 bar (1 798.5 psi)

5) Available only with blind flange on LP side.

6) The 250 bar measuring cell can be used over the entire measuring range with up to 100,000 load changes without specification restrictions.

Minimum static pressure

- Minimum static pressure at reference operating conditions for silicone oil:

25 mbar (0.0375 psi)_{abs}

- Minimum static pressure for 85 °C (185 °F) silicone oil: to 250 mbar (4 psi)_{abs}

Optionally available as a gauge or absolute pressure sensor (all measuring cells)

- Minimum static pressure at reference operating conditions for silicone oil:

10 mbar (0.15 psi)_{abs}


- Minimum static pressure for 85 °C (185 °F) silicone oil: to 10 mbar (0.15 psi)_{abs}

15.2 Output

Output signal	PROFINET with Ethernet-APL 10BASE-T1L, 2-wire 10 Mbit
Signal on alarm	PROFINET over Ethernet-APL: <ul style="list-style-type: none"> ■ According to "Application layer protocol for decentralized periphery", Version 2.4 ■ Diagnostics according to PROFINET PA Profile 4.02
Damping	A damping affects all outputs (output signal, display). Damping can be enabled as follows: <ul style="list-style-type: none"> ■ Via the onsite display, Bluetooth, handheld terminal or PC with operating program, continuous from 0 to 999 seconds ■ Factory setting: 1 s
Ex connection data	See the separate technical documentation (Safety Instructions (XA)) on www.endress.com/download .
Linearization	The device's linearization function allows the user to convert the measured value to any units of height or volume. User-defined linearization tables of up to 32 value pairs can be entered if necessary.
Flow measurement with Deltabar and differential pressure sensor	Low flow cut off parameter: When the Low flow cut off parameter is activated, small flows which can lead to large fluctuations in the measured value are suppressed. The Low flow cut off parameter is set to 5% by default when the Output current transfer function parameter is set to Square root option.

Protocol-specific data **PROFINET over Ethernet-APL**

Protocol	Application layer protocol for decentral device periphery and distributed automation, Version 2.4
Communication type	Ethernet Advanced Physical Layer 10BASE-T1L
Conformity class	Conformance Class B
Netload Class	Netload Class II
Baud rates	Automatic 10 Mbit/s with full-duplex detection
Periods	From 32 ms
Polarity	Auto-polarity for automatic correction of crossed TxD and RxD pairs
Media Redundancy Protocol (MRP)	Yes
System redundancy support	System redundancy S2 (2 AR with 1 NAP)
Device profile	Application interface identifier 0xB310 Generic device
Manufacturer ID	0x11
Device type ID	A231
Device description files (GSD, FDI, DTM, DD)	Information and files at: <ul style="list-style-type: none"> ■ www.endress.com On the product page for the device: Documents/Software → Device drivers ■ www.profibus.org

Supported connections	<ul style="list-style-type: none"> ■ 2 x AR (IO Controller AR) ■ 1 x AR (IO-Supervisor Device AR connection allowed) ■ 1 x Input CR (Communication Relation) ■ 1 x Output CR (Communication Relation) ■ 1 x Alarm CR (Communication Relation)
Configuration options for device	<ul style="list-style-type: none"> ■ Manufacturer-specific software (FieldCare, DeviceCare) ■ Web browser ■ Device master file (GSD), can be read out via the integrated web server of the device ■ DIP switch for setting the service IP address
Configuration of the device name	<ul style="list-style-type: none"> ■ DCP protocol ■ Process Device Manager (PDM) ■ Integrated web server
Supported functions	<ul style="list-style-type: none"> ■ Identification & maintenance Simple device identification via: <ul style="list-style-type: none"> ■ Control system ■ Nameplate ■ Measured value status The process variables are communicated with a measured value status ■ Blinking feature via the local display for simple device identification and assignment ■ Device operation via operating tools (e.g. FieldCare, DeviceCare, SIMATIC PDM)
System integration	<p>For information on system integration, see  Operating Instructions</p> <ul style="list-style-type: none"> ■ Cyclic data transmission ■ Overview and description of the modules ■ Status coding ■ Startup parameterization ■ Factory setting

PROFIBUS PA

Manufacturer ID:

17 (0x11)

Ident number:

0x1574 or 0x9700

Profile version:

3.02

GSD file and version

Information and files at:

- www.endress.com

On the product page for the device: Documents/Software → Device drivers

- www.profibus.com

Output values

Analog Input:

- Pressure
- Scaled variable
- Sensor temperature
- Sensor pressure
- Electronics temperature
- **Median of pressure signal** option (only available if the "Heartbeat Verification + Monitoring" application package was selected).
- **Noise of pressure signal** option (only available if the "Heartbeat Verification + Monitoring" application package was selected).

Digital Input:

 Only available if the "Heartbeat Verification + Monitoring" application package was selected

Heartbeat Technology → SSD: Statistical Sensor Diagnostics

Heartbeat Technology → Process Window

Input values

Analog Output:

Analog value from PLC to be indicated on the display

Supported functions

- Identification & maintenance
Simple device identification via control system and nameplate
- Automatic Ident Number Adoption
GSD compatibility mode for generic profile 0x9700 "Transmitter with 1 Analog Input"
- Physical Layer Diagnostics
Installation check of the PROFIBUS segment and device using terminal voltage and message monitoring
- PROFIBUS upload/download
Reading and writing parameters is up to ten times faster with PROFIBUS upload/download
- Condensed status
Straightforward and self-explanatory diagnostic information through categorization of occurring diagnostic messages

15.3 Environment

Ambient temperature range

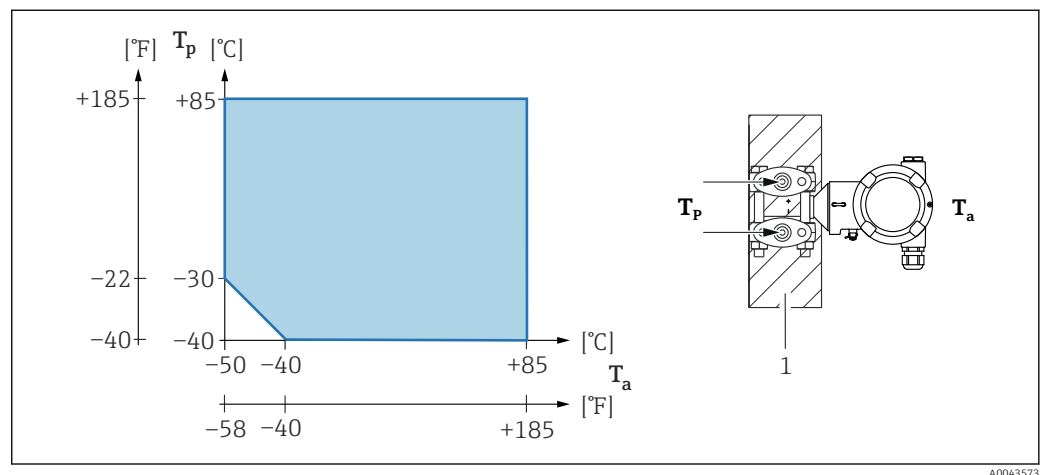
The following values apply up to a process temperature of +85 °C (+185 °F). The permitted ambient temperature is reduced at higher process temperatures.

- Without segment display or graphic display:
 - Standard: -40 to +85 °C (-40 to +185 °F)
 - Optionally available: -50 to +85 °C (-58 to +185 °F) with restricted operating life and performance
 - Optionally available: -54 to +85 °C (-65 to +185 °F); below -50 °C (-58 °F): devices can be permanently damaged
- With segment display or graphic display: -40 to +85 °C (-40 to +185 °F) with limitations in optical properties such as display speed and contrast for example. Can be used without limitations up to -20 to +60 °C (-4 to +140 °F)
Segment display: up to -50 to +85 °C (-58 to +185 °F) with restricted operating life and performance
- Separate housing: -20 to +60 °C (-4 to +140 °F)

Devices with inert oil: minimum process and ambient temperature -20 °C (-4 °F)

Ambient temperature T_a depending on the process temperature T_p

The process connection must be fully insulated for ambient temperatures below -40 °C (-40 °F).



1 Insulation material

Hazardous area

- For devices for use in hazardous areas, see the Safety Instructions, Installation Drawing or Control Drawing
- Devices that have the most common explosion protection certificates (e.g. ATEX/ IEC Ex, etc.) can be used in explosive atmospheres with an ambient temperature of -54 to +85 °C (-65 to +185 °F) (optionally available). The functionality of the explosion protection Ex ia is guaranteed for ambient temperatures to -50 °C (-58 °F) (optionally available).

At temperatures ≤ -50 °C (-58 °F), explosion protection is guaranteed by the housing in the case of flameproof enclosure (Ex d) type of protection. The functionality of the transmitter cannot be fully guaranteed. The Ex ia capability can no longer be guaranteed.

Storage temperature	<ul style="list-style-type: none"> ■ Without device display: <ul style="list-style-type: none"> ■ Standard: -40 to +90 °C (-40 to +194 °F) ■ Optionally available: -50 to +90 °C (-58 to +194 °F) with restricted operating life and performance ■ Optionally available: -54 to +90 °C (-65 to +194 °F); below -50 °C (-58 °F): Ex d devices can be permanently damaged ■ With device display: -40 to +85 °C (-40 to +185 °F) ■ Separate housing: -40 to +60 °C (-40 to +140 °F) <p>With M12 plug, elbowed: -25 to +85 °C (-13 to +185 °F)</p>
Operating altitude	Up to 5 000 m (16 404 ft) above sea level.
Climate class	<p>Class 4K26 (air temperature: -20 to +50 °C (-4 to +122 °F), relative air humidity: 4 to 100 %) in accordance with IEC/EN 60721-3-4.</p> <p>Condensation is possible.</p>
Atmosphere	<p>Operation in very corrosive environment</p> <p>Anodic corrosion protection can be ordered as a "mounted accessory".</p>
Degree of protection	Test as per IEC 60529 and NEMA 250-2014

Housing and process connection

IP66/68, TYPE 4X/6P

(IP68: (1.83 mH₂O for 24 h))

Cable entries

- Gland M20, plastic, IP66/68 TYPE 4X/6P
- Gland M20, brass nickel plated, IP66/68 TYPE 4X/6P
- Gland M20, 316L, IP66/68 TYPE 4X/6P
- Thread M20, IP66/68 TYPE 4X/6P
- Thread G1/2, IP66/68 TYPE 4X/6P

If the G1/2 thread is selected, the device is delivered with an M20 thread as standard and a G1/2 adapter is included with the delivery, along with the corresponding documentation
- Thread NPT1/2, IP66/68 TYPE 4X/6P
- Dummy plug transport protection: IP22, TYPE 2
- M12 plug

When housing is closed and connecting cable is plugged in: IP66/67 NEMA Type 4X
When housing is open or connecting cable is not plugged in: IP20, NEMA Type 1

NOTICE

M12 plug: incorrect installation can invalidate the IP protection class!

- ▶ The degree of protection only applies if the connecting cable used is plugged in and screwed tight.
- ▶ The degree of protection only applies if the connecting cable used is specified according to IP67 NEMA Type 4X.
- ▶ The IP protection classes are only maintained if the dummy cap is used or the cable is connected.

Process connection and process adapter when using the separate housing*FEP cable*

- IP69 (on sensor side)
- IP66 TYPE 4/6P
- IP68 (1.83 mH₂O for 24 h) TYPE 4/6P

PE cable

- IP66 TYPE 4/6P
- IP68 (1.83 mH₂O for 24 h) TYPE 4/6P

Vibration resistance

Aluminum single-compartment housing

Measuring range	Sinusoidal vibration IEC62828-1	Shock
10 mbar (0.15 psi) and 30 mbar (0.45 psi) (only up to PN100)	10 Hz to 60 Hz: ±0.21 mm (0.0083 in) 60 Hz to 2000 Hz: 3 g	30 g
0.1 to 250 bar (1.5 to 3 750 psi)	10 Hz to 60 Hz: ±0.35 mm (0.0138 in) 60 Hz to 1000 Hz: 5 g	30 g

Aluminum dual-compartment housing

Measuring range	Sinusoidal vibration IEC62828-1	Shock
10 mbar (0.15 psi) and 30 mbar (0.45 psi)	10 Hz to 60 Hz: ±0.21 mm (0.0083 in) 60 Hz to 2000 Hz: 3 g	30 g
0.1 to 250 bar (1.5 to 3 750 psi)	10 Hz to 60 Hz: ±0.35 mm (0.0138 in) 60 Hz to 1000 Hz: 5 g	30 g

Stainless steel dual-compartment housing and stainless steel precision-cast dual-compartment housing

Measuring range	Sinusoidal vibration IEC62828-1	Shock
10 mbar (0.15 psi) and 30 mbar (0.45 psi) (only up to PN63)	10 Hz to 60 Hz: ±0.075 mm (0.0030 in) 60 Hz to 500 Hz: 1 g	15 g
0.1 to 250 bar (1.5 to 3 750 psi)	10 Hz to 60 Hz: ±0.15 mm (0.0059 in) 60 Hz to 500 Hz: 2 g	15 g

Dual-compartment housing, L-form

Sinusoidal vibration IEC62828-1	Shock
10 Hz to 60 Hz: ±0.21 mm (0.0083 in) 60 Hz to 2000 Hz: 3 g	30 g

Electromagnetic compatibility (EMC)

- Electromagnetic compatibility as per IEC 61326 series and NAMUR recommendation EMC (NE21)
- With regard to the safety function (SIL), the requirements of IEC 61326-3-x are satisfied.
- Maximum deviation with interference influence: < 0.5% of span with full measuring range (TD 1:1)

For more details refer to the EU Declaration of Conformity.

15.4 Process

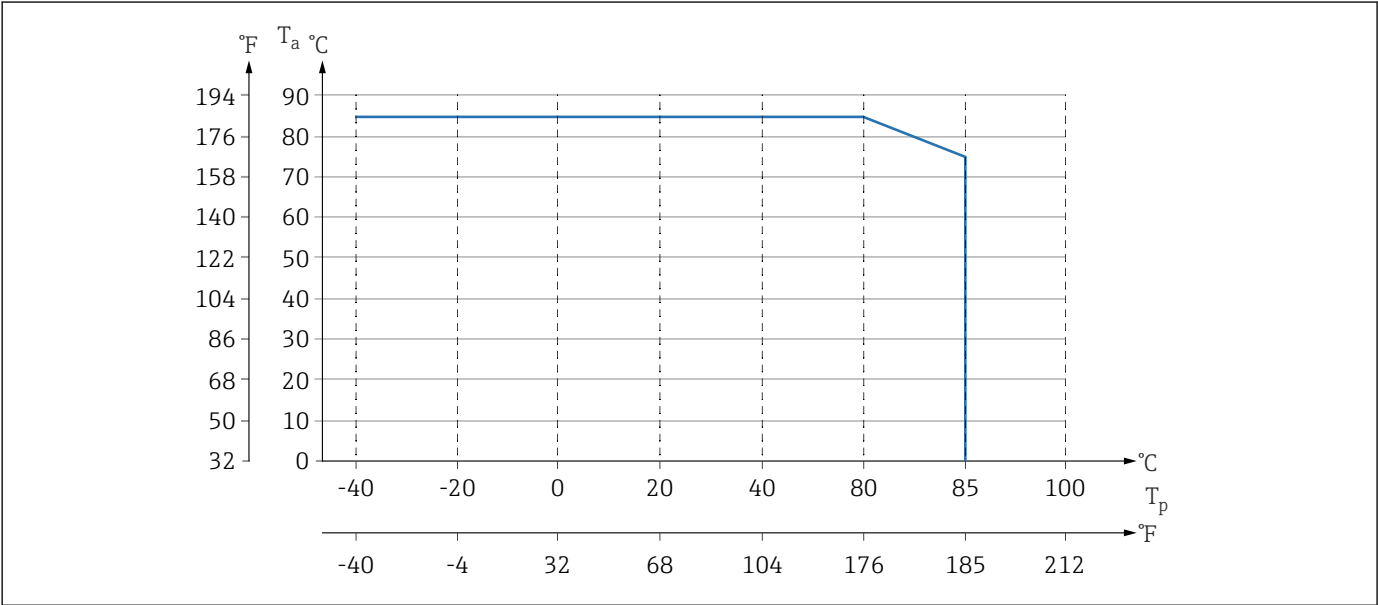
Process temperature range

NOTICE

The permitted process temperature depends on the process connection, the ambient temperature and the type of approval.

- All the temperature data in this document must be taken into consideration when selecting the device.

Devices without a manifold

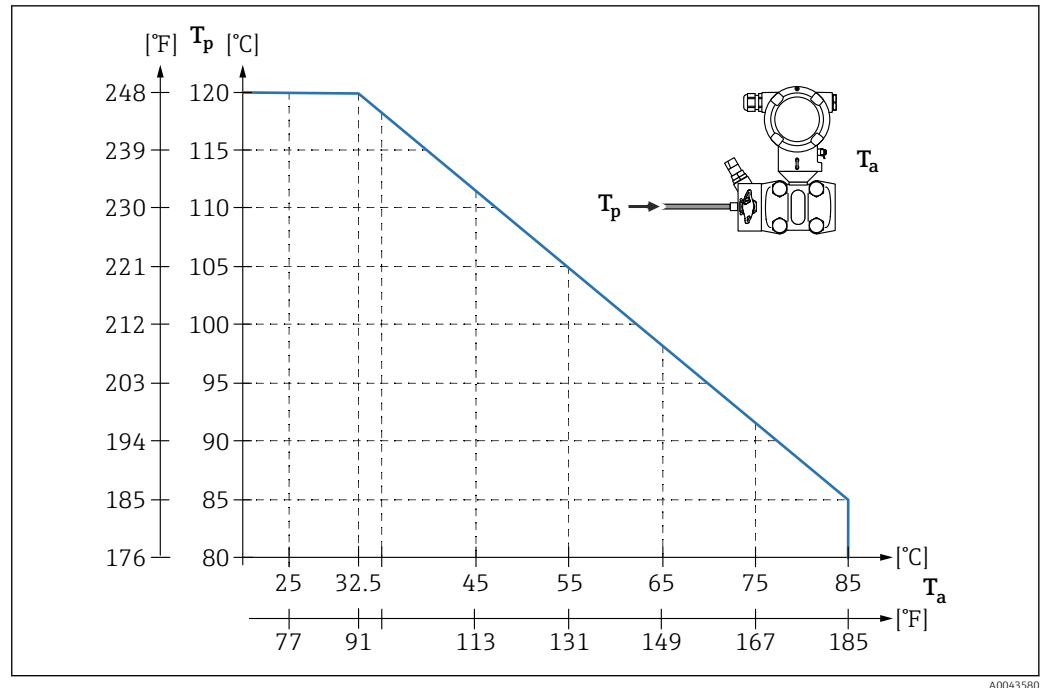


15 Values apply for vertical mounting without insulation.

T_p Process temperature
 T_a Ambient temperature

Devices with a manifold

The maximum permitted process temperature at the manifold is 110 °C (230 °F).
For process temperatures >85 °C (185 °F)C where non-insulated side flanges are installed horizontally on a valve manifold, a reduced ambient temperature applies (see the following graphic).



A0043580

T_a Maximum ambient temperature at the manifold

T_p Maximum process temperature at the manifold

Oxygen applications (gaseous)

Oxygen and other gases can react explosively to oils, grease and plastics. The following precautions must be taken:

- All components of the system, such as devices, must be cleaned in accordance with national requirements.
- Depending on the materials used, a certain maximum temperature and a maximum pressure must not be exceeded for oxygen applications.

The cleaning of the device (not accessories) is provided as an optional service.

T_{max}	P_{max}
80 °C (176 °F)	80 bar (1 200 psi)
> 80 to 120 °C (176 to 248 °F)	70 bar (1 050 psi)

Seals

Seal	Temperature	Pressure specifications
FKM	-20 to +85 °C (-4 to +185 °F)	PN > 160 bar (2 320 psi): T_{min} -15 °C (+5 °F)
FKM Cleaned of oil and grease	-10 to +85 °C (+14 to +185 °F)	-
FKM Cleaned for oxygen service	-10 to +60 °C (+14 to +140 °F)	-
FFKM	-10 to +85 °C (+14 to +185 °F)	MWP: 160 bar (2 320 psi)
	-25 to +85 °C (-13 to +185 °F)	MWP: 100 bar (1 450 psi)
EPDM ¹⁾	-40 to +85 °C (-40 to +185 °F)	-

Seal	Temperature	Pressure specifications
PTFE ²⁾	−40 to +85 °C (−40 to +185 °F)	PN > 160 bar (2 320 psi) Minimum process temperature: −20 °C (−4 °F)
PTFE ²⁾ Cleaned for oxygen applications	−20 to +60 °C (−4 to +140 °F)	-

- 1) Deviations outside of the reference accuracy are possible for temperatures <−20 °C (−4 °F).
- 2) For 10 mbar (0.15 psi) and 30 mbar (0.45 psi) measuring cells: in the case of constantly high pressure (≥ 63 bar (913.5 psi)) and simultaneously low process temperature time (<−10 °C (+14 °F)) use FKM, EPDM or FFKM seals.

Process temperature range
(temperature at
transmitter)

Device without a manifold

- −40 to +85 °C (−40 to +185 °F)
Lower temperatures are optionally available.
- Pay attention to the process temperature range of the seal

Device with a manifold


The maximum permitted process temperature at the manifold is 110 °C (230 °F) (restricted by IEC standard).

For process temperatures >85 °C (185 °F) where non-insulated side flanges are installed horizontally on a manifold, a reduced ambient temperature applies up to a maximum ambient temperature, calculated according to the following formula:

$$T_{\text{Ambient_Temperature_max}} = 85\text{ °C} - 2.8 \cdot (T_{\text{Process_Temperature}} - 85\text{ °C})$$
$$T_{\text{Ambient_Temperature_max}} = 185\text{ °F} - 2.8 \cdot (T_{\text{Process_Temperature}} - 185\text{ °F})$$
$$T_{\text{Ambient_Temperature_max}} = \text{maximum ambient temperature in °C or °F}$$
$$T_{\text{Process_Temperature}} = \text{process temperature at a manifold in °C or °F}$$

Process pressure range

Pressure specifications

 The maximum pressure for the device depends on the lowest-rated element with regard to pressure.
Components are: process connection, optional mounting parts, or accessories.

⚠ WARNING**Incorrect design or use of the device may cause injury due to bursting parts!**

- ▶ Only operate the device within the specified limits for the components!
- ▶ MWP (maximum working pressure): The maximum working pressure is specified on the nameplate. This value refers to a reference temperature of +20 °C (+68 °F) and may be applied to the device for an unlimited time. Note temperature dependence of MWP. For flanges, refer to the following standards for the permitted pressure values at higher temperatures: EN 1092-1 (with regard to their stability/temperature property, the materials 1.4435 and 1.4404 are grouped together under EN 1092-1; the chemical composition of the two materials can be identical.), ASME B 16.5a, JIS B 2220 (the latest version of the standard applies in each case). Maximum working pressure data that deviate from this are provided in the relevant sections of the Technical Information.
- ▶ The overpressure limit is the maximum pressure that a device may be subjected to during a test. The overpressure limit exceeds the maximum working pressure by a certain factor. This value refers to a reference temperature of +20 °C (+68 °F).
- ▶ The Pressure Equipment Directive (2014/68/EU) uses the abbreviation "PS". The abbreviation "PS" corresponds to the MWP (maximum working pressure) of the device.
- ▶ The Pressure Equipment Directive (2014/68/EU) uses the abbreviation "PT". The abbreviation "PT" corresponds to the OPL (Over Pressure Limit) of the device. OPL (Over Pressure Limit) is a test pressure.
- ▶ In the case of measuring cell range and process connection combinations where the overpressure limit (OPL) of the process connection is less than the nominal value of the measuring cell, the device is set at the factory, at the very maximum, to the OPL value of the process connection. If the entire measuring cell range must be used, select a process connection with a higher OPL value ($1.5 \times \text{PN}$; $\text{MWP} = \text{PN}$).
- ▶ Oxygen applications: do not exceed values for P_{max} and T_{max} .
- ▶ The measuring cells have been designed for high pressure ratings with load change. Check the zero point regularly in the event of very frequent load changes up to the nominal pressure 0 to 320 bar (0 to 4 641 psi) and 0 to 420 bar (0 to 6 092 psi).
- ▶ For the 10 mbar (0.15 psi) and 30 mbar (0.45 psi) measuring cells: Check the zero point regularly at pressures ≥ 63 bar (913.5 psi).

Burst pressure

As of the specified burst pressure, the complete destruction of the pressure-bearing parts and/or a device leak must be expected. It is therefore imperative to avoid such operating conditions by carefully planning and sizing your facility.

Ultrapure gas applications	Endress+Hauser also offers devices for special applications, such as for ultrapure gas, that are cleaned of oil and grease. No special restrictions regarding the process conditions apply to these devices.
Hydrogen applications	A gold-coated metallic membrane offers universal protection against hydrogen diffusion, both in gas applications and in applications with water-based solutions.

Index

Symbols

"Device ID" parameter	43
"Device revision" parameter	43
"Firmware version" parameter	43
"Manufacturer ID" parameter	43

A

Access authorization to parameters	
Read access	33
Write access	33
Access code	33
Incorrect input	33
APL integration	43

B

Bluetooth® wireless technology	35
--------------------------------	----

C

CE mark (Declaration of Conformity)	10
Cleaning	75
Cyclic data transmission	45

D

Declaration of Conformity	10
Device description files	43
Device documentation	
Supplementary documentation	7
Device locking, status	61
Device master file	
GSD	43
Device Viewer	76
DeviceCare	42
Device description file	43
Diagnostic event	68
Diagnostic events	66, 67
Diagnostic information	
Design, description	69
Web browser	68
Diagnostic list	69
Diagnostic message	67
Diagnostics	
Symbols	67
Display values	
For locking status	61
Disposal	78

E

Event history	71
Event text	68
Events list	71
Exterior cleaning	75

F

FieldCare	42
Device description file	43
Function	42
Filtering the event logbook	72

Firmware

Release date	43
--------------	----

I

Intended use	9
--------------	---

L

Local display	
see Diagnostic message	
see In alarm condition	

M

Maintenance	75
-------------	----

N

Nameplate	14
-----------	----

O

Operating elements	
Diagnostic message	68
Operation	61
Operational safety	9
Output values	85

P

Product safety	10
PROFINET protocol	48

R

Read access	33
Reading off measured values	61
Repair concept	76
Requirements concerning the staff	9

S

Safety requirements	
Basic	9
Service interface (CDI)	42, 49
Settings	
Adapting the device to process conditions	61
Software release	43
Spare parts	76
Nameplate	76
Status signals	67, 68
Submenu	
Events list	71
Interfaces	40
Measured values	61
System redundancy S2	47

T

Troubleshooting	63
Turning the display module	24

U

Use of the device	
see Intended use	

Using the devices

Borderline cases	9
Incorrect use	9

V

Version data for the device	43
---------------------------------------	----

W

Workplace safety	9
Write access	33



www.addresses.endress.com
