

Installation Instructions

Flow assembly Flowfit CPA240

Spare parts



Table of contents

1 Overview 3

2 Intended use 5

3 Personnel authorized to carry out conversion 5

4 Safety instructions 5

5 Scope of delivery 6






6 Additional documentation 9

7 Disposal 9

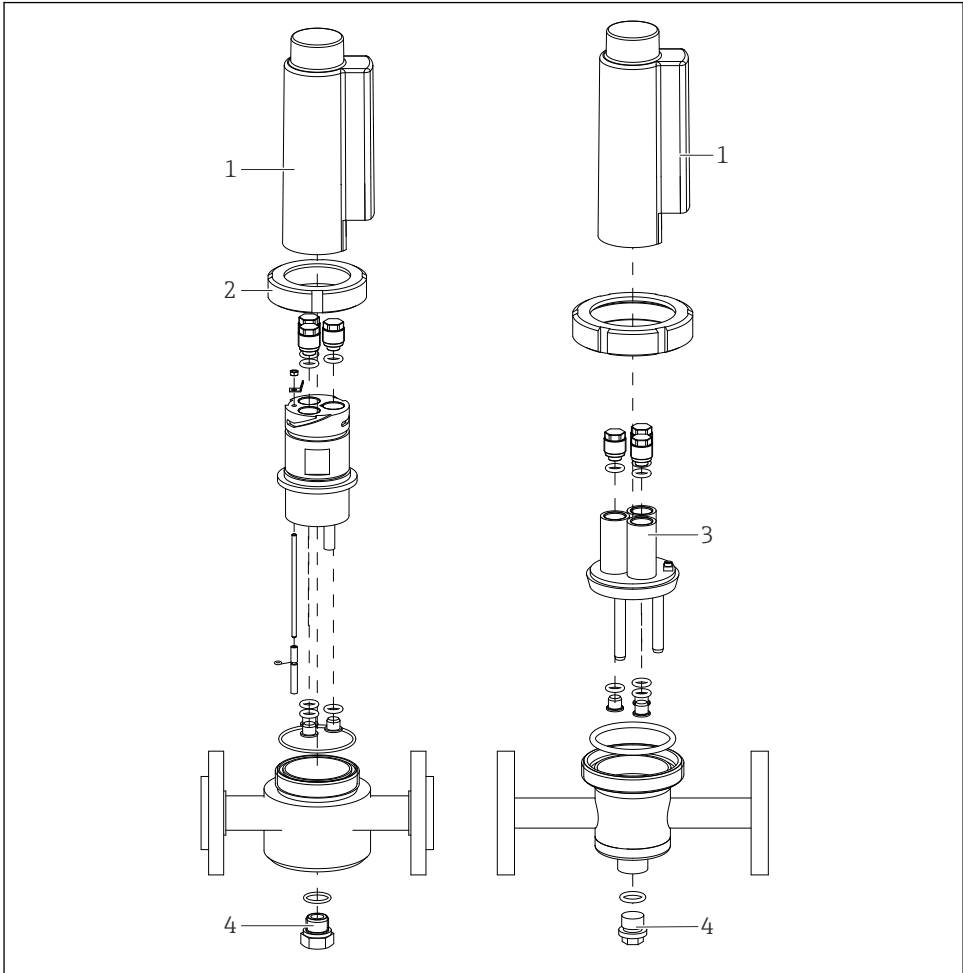
1 Overview

1.1 Spare parts kits

These installation instructions apply to the following spare parts kits:

Order code	Description	Page
51501195 (EPDM) 51501196 (Viton) 51501197 (Chemraz) 51501198 (Fluoraz)	CPA240-2 PVDF drain screw	→  6
51501199 (EPDM) 51501200 (Viton) 51501201 (Chemraz) 51501202 (Fluoraz)	CPA240-3 drain screw, 1.4404	→  6
51501191	CPA240 cover	→  7
51501193	CPA240-2 grooved union nut	→  7
51501175 (EPDM) 51501176 (Viton) 51501177 (Chemraz) 51501178 (Fluoraz)	CPA240-3 electrode holder, 1.4404	→  8

1.2 Overview of the components



A0060031

1 Structure of CPA240-2xxxxxx (left) and CPA240-3xxxxxx (right)


- 1 Cover
- 2 Grooved union nut
- 3 Electrode holder
- 4 Drain screw

2 Intended use

- The parts of the kits must only be used as spare parts for CPA240 flow assemblies. Any other use is not permitted!
- Use only original parts from Endress+Hauser.
- In the Device Viewer, check if the spare part is suitable for the device in question.

3 Personnel authorized to carry out conversion

- Installation, commissioning, operation and maintenance of the measuring system may be carried out only by specially trained technical personnel.
- The technical personnel must be authorized by the plant operator to perform the stated tasks.
- The electrical connection may only be established by an electrical technician.
- The technical personnel must have read and understood these Installation Instructions and must follow the instructions they contain.
- Measuring point faults may be repaired only by authorized and specially trained personnel.
- In the case of Ex-certified devices, the technical staff must also be trained in explosion protection.

 Repairs not described in the Operating Instructions provided must only be carried out directly at the manufacturer's site or by the service organization.

4 Safety instructions

WARNING

Risk of injury from high pressure, high temperatures, chemical hazards, or escaping medium!

- ▶ Before any maintenance task, depressurize and drain the system.
- ▶ Flush the assembly thoroughly before starting work, as it may contain medium residues.


NOTICE

Material damage due to solvents!

- ▶ Do not use any halogen-containing organic solvents or acetone. These solvents could destroy plastic components of the assembly.

Potential impact on the process

Before decommissioning an active device, the potential impact on the overall process must be taken into account! This applies in particular when using the switching contacts, the analog signal outputs or the communication interface of the associated measuring instrument to control process variables. Coordinate service tasks with the operator!

 Contact Endress+Hauser Service if you have questions: www.addresses.endress.com

5 Scope of delivery

5.1 Kits CPA240-2 PVDF drain screws



The difference between the contents of the following kits is the O-ring material:

- 51501195 Kit CPA240-2, PVDF drain screw; EPDM
- 51501196 Kit CPA240-2 PVDF drain screw; Viton
- 51501197 Kit CPA240-2 PVDF drain screw; Chemraz
- 51501198 Kit CPA240-2 PVDF drain screw; Fluoraz

The kit contains the following parts → 2, 6:

- | | | | |
|-----|------------------------------------|-----|------------------|
| 1 x | Drain screw R ½ PVDF | 1 x | Kit instructions |
| 1 x | O-ring ID 20.29 W 2.62 OD 25.53 mm | | |



A0060032

2 CPA240-2 PVDF drain screws

5.2 Kit CPA240-3, drain screws, 1.4404

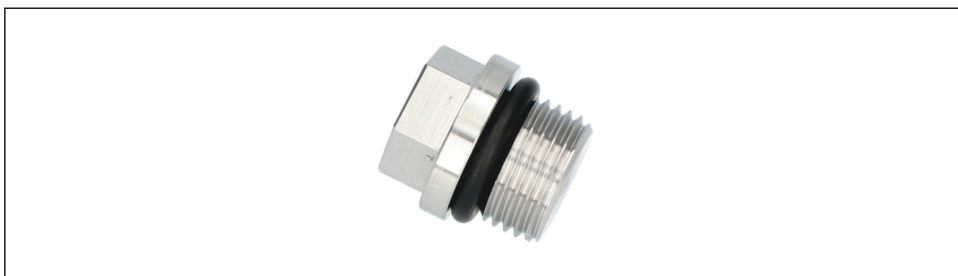


The difference between the contents of the following kits is the O-ring material:

- 51501199 Kit CPA240-3 drain screw, 1.4404; EPDM
- 51501200 Kit CPA240-3 drain screw, 1.4404; Viton
- 51501201 Kit CPA240-3 drain screw, 1.4404; Fluoraz
- 51501202 kit CPA240-3 drain screw, 1.4404; Chemraz

The kit contains the following parts → 3, 7:

- | | | | |
|-----|------------------------------------|-----|------------------|
| 1 x | Drain screw G ½ 1.4404 | 1 x | Kit instructions |
| 1 x | O-ring ID 17.04 W 3.53 OD 24.10 mm | | |



A0060033

3 CPA240-3 drain screws, 1.4404

5.3 51501191 Kit CPA240 cover

The kit contains the following parts → 4, 7:

1 x Protection cover

1 x Kit instructions



A0060034

4 CPA240 cover

5.4 51501193 Kit CPA240-2 grooved union nut

The kit contains the following parts → 5, 8:

1 x Grooved union nut NW 50

1 x Kit instructions



A0060035

5 CPA240-2 grooved union nut, for CPA240-2xxxxxx (PVDF variant)

5.5 Kit CPA240-3 electrode holder, 1.4404

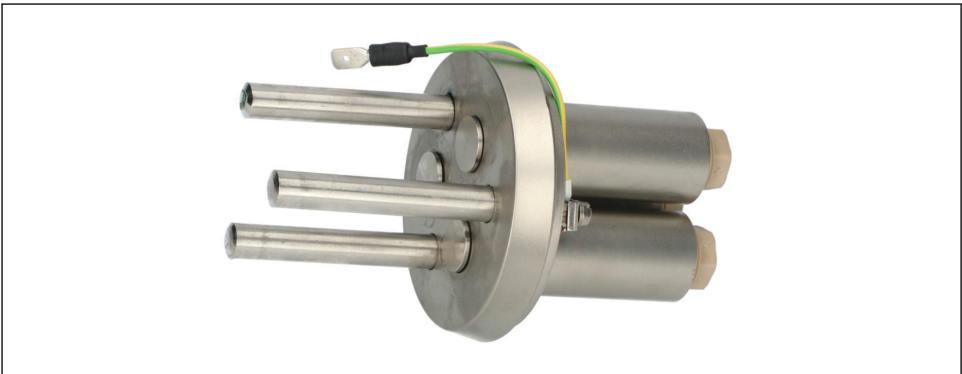
i The difference between the contents of the following kits is the O-ring material:

- 51501175 Kit CPA240-3 electrode holder, 1.4404; EPDM
- 51501176 Kit CPA240-3 electrode holder, 1.4404; Viton
- 51501177 Kit CPA240-3 electrode holder, 1.4404; Chemraz
- 51501178 Kit CPA240-3 electrode holder, 1.4404; Fluoraz

The kit contains the following parts :

1 x Electrode holder, 1.4404, with sealing plug

1 x Kit instructions



A0060036

6 CPA240-3 electrode holder, 1.4404

6 Additional documentation

Detailed information on the devices can be found in the Operating Instructions of the assemblies and the other documentation are available at:

- www.endress.com/device-viewer
- Smartphone/tablet: Endress+Hauser Operations app

7 Disposal

7.1 Assemblies

- ▶ Observe the local regulations.

7.2 Sensors



If required by the Directive 2012/19/EU on waste electrical and electronic equipment (WEEE), the product is marked with the depicted symbol in order to minimize the disposal of WEEE as unsorted municipal waste. Do not dispose of products bearing this marking as unsorted municipal waste. Instead, return them to the manufacturer for disposal under the applicable conditions.



71722243

www.addresses.endress.com
