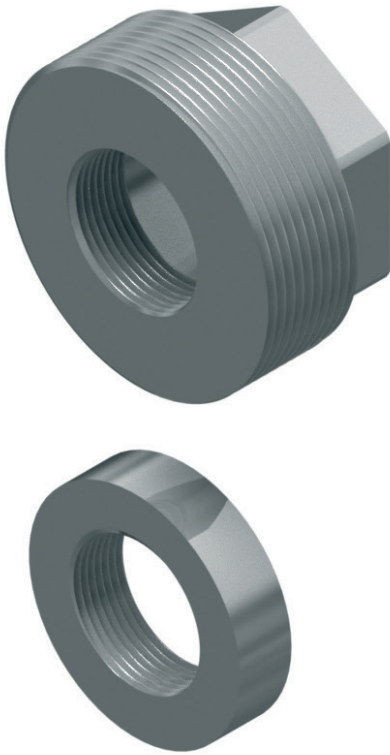


# Technical Information

## FAR52

### Screw-in/weld-in adapter



Universal screw-in or weld-in adapter for existing process threads or holes in metallic walls, ideal for simple retro-fitting

#### Application

- Process adapter for the Soliwave microwave barrier and the Solimotion flow indicator
- Simple and cost-effective installation solution

#### Properties

- Adapter without process separation
- Suitable for holes in metallic walls and existing process threads Rp 2 to Rp 4 (acc. to EN 10226) or 2 NPT to 4 NPT (acc. to ANSI/ASME)
- The screw-in adapter with R 2 to R 4 can also be used for existing threads with G 2 to G 4 (acc. to ISO 228-1).
- Materials: Stainless steel 1.4571 (316Ti) or steel 1.0345 (P235GH)

#### Your benefits

- Cost-effective adapter for existing process threads or simple retro-fitting with weld-in version
- Special versions (dimensions and material) are available on request

---

## Performance characteristics

---

### Operating conditions

#### Process temperature

see devices of the Soliwave microwave barrier or Solimotion flow indicator

#### Process pressure

see devices of the Soliwave microwave barrier or Solimotion flow indicator

#### NOTICE

The maximum process temperature and pressure are determined by the installed devices.

---

### Material

- Stainless steel 1.4571 (316Ti)
- Steel 1.0345 (P235GH)

---

### Device connection

Suitable for the devices of the Soliwave microwave barrier and the Solimotion flow indicator, the following threads are available:

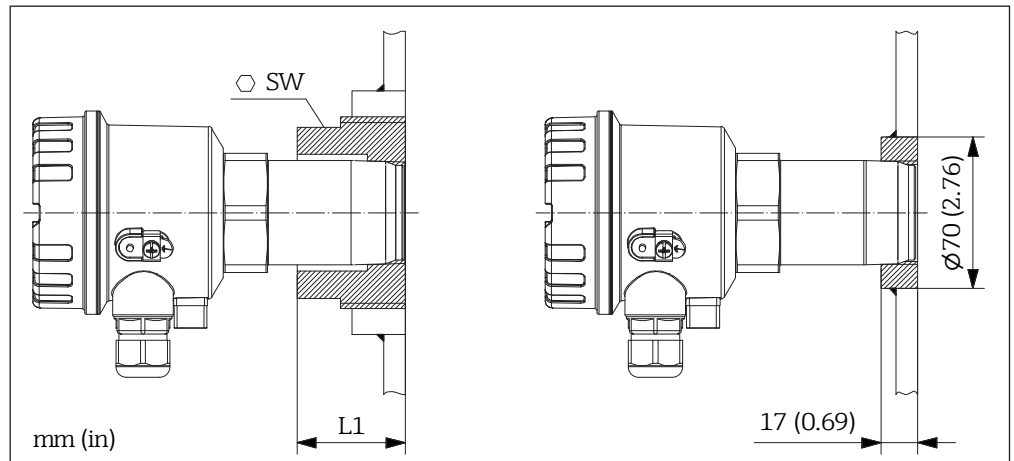
- R 1½ acc. to EN 10226
- 1½ NPT acc. to ANSI/ASME
- G 1½ acc. to ISO 228-1



The device connection G 1½ acc. to ISO 228-1 is only available on weld-in version.

## Mechanical construction

### Design, dimensions



Adapter thread	SW	L1
R 2	55 (2.17)	45 (1.77)
R 3	70 (2.76)	50 (1.97)
R 4	70 (2.76)	55 (2.17)
2 NPT	54 (2.13)	40 (1.58)
3 NPT	70 (2.76)	50 (1.97)
4 NPT	70 (2.76)	55 (2.17)

All dimensions in mm (in).

### Weight

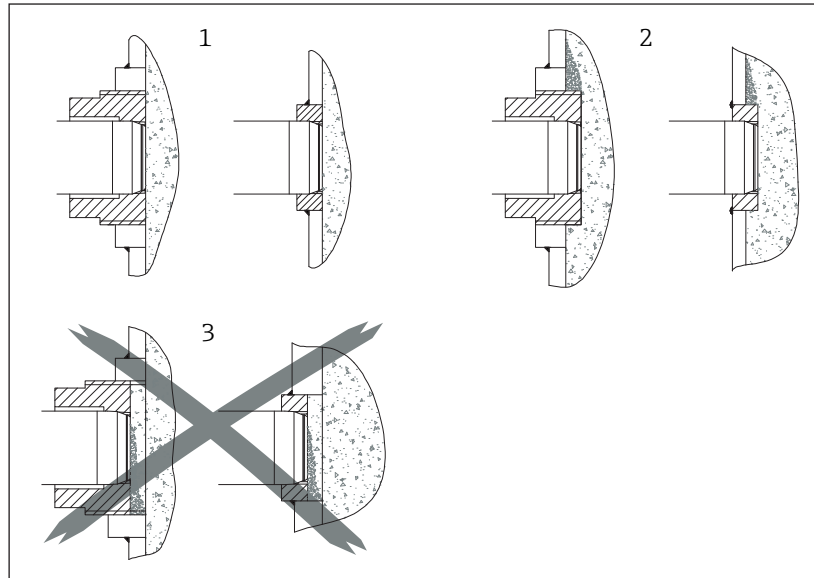
The weight depends on version and process connection, for example:

- FAR52-AAAA1A  
Weld-in adapter, material steel 1.0345 (P235GH), device connection R 1½, EN 10226  
Weight 0.3 kg (0.66 lbs)
- FAR52-BVL22B  
Screw-in adapter 4 NPT, ANSI/ASME, material stainless steel 1.4571 (316Ti), device connection 1½ NPT, ANSI/ASME  
Weight 1.8 kg (4 lbs)

## Installation condition

**Orientation** The adapter can be installed in any position.

**Installation instructions** For utilization of the Soliwave microwave barrier, take care that the adapter for transmitter and transceiver are positioned directly opposite of each other (see relevant Technical Information as well).



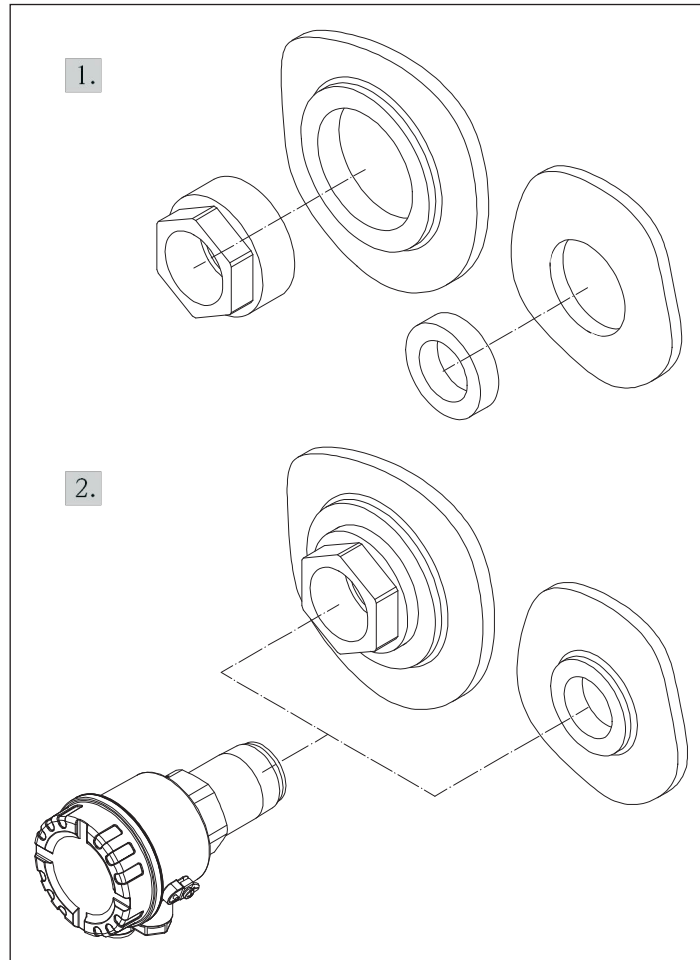
The adapter should be mounted in such a way, that it is flush with the inner vessel wall (1). Alternatively, the adapter can protrude slightly into the process (2), as long as he stands no risk of being damaged by falling media. A recessed position (3) must be avoided, because media can accumulate there, impairing the function of the devices.

## Installation

### Installation instructions

The installation is done in two steps:

1. Install the screw-in adapter carefully into the thread on the process, or else position the weld-in adapter precisely and weld it in place.
2. Install and arrange the devices of the Soliwave microwave barrier or the Solimotion flow indicator



## Ordering information

### Product structure

Detailed ordering information is available from the following sources:

- In the Product Configurator on the Endress+Hauser website: [www.endress.com](http://www.endress.com) → Select your country → Products → Select measuring technology, software or components → Select the product (picklists: measurement method, product family etc.) → Device support (right-hand column): Configure the selected product → The Product Configurator for the selected product opens.
- From your Endress+Hauser Sales Center: [www.addresses.endress.com](http://www.addresses.endress.com)

<b>010</b>	<b>Version</b>
A	Weld-in adapter
B	Screw-in adapter
<b>020</b>	<b>Process connection</b>
AAA	Without (weld-in adapter)
VF2	Thread 2 NPT, ANSI/ASME
VJ2	Thread 3 NPT, ANSI/ASME
VL2	Thread 4 NPT, ANSI/ASME
XG2	Thread R 2, EN 10226
XJ2	Thread R 3, EN 10226
XL2	Thread R 4, EN 10226
<b>030</b>	<b>Material</b>
1	Steel 1.0345 (P235GH)
2	Stainless steel 1.4571 (316Ti)
<b>040</b>	<b>Device connection</b>
A	Thread R 1½, EN 10226
B	Thread 1½ NPT, ANSI/ASME
C	Thread G 1½, ISO 228-1



- Special versions (dimensions and material) are available on request.
- The device connection G 1½ acc. to ISO 228-1 is only available on weld-in version.



[www.addresses.endress.com](http://www.addresses.endress.com)

---