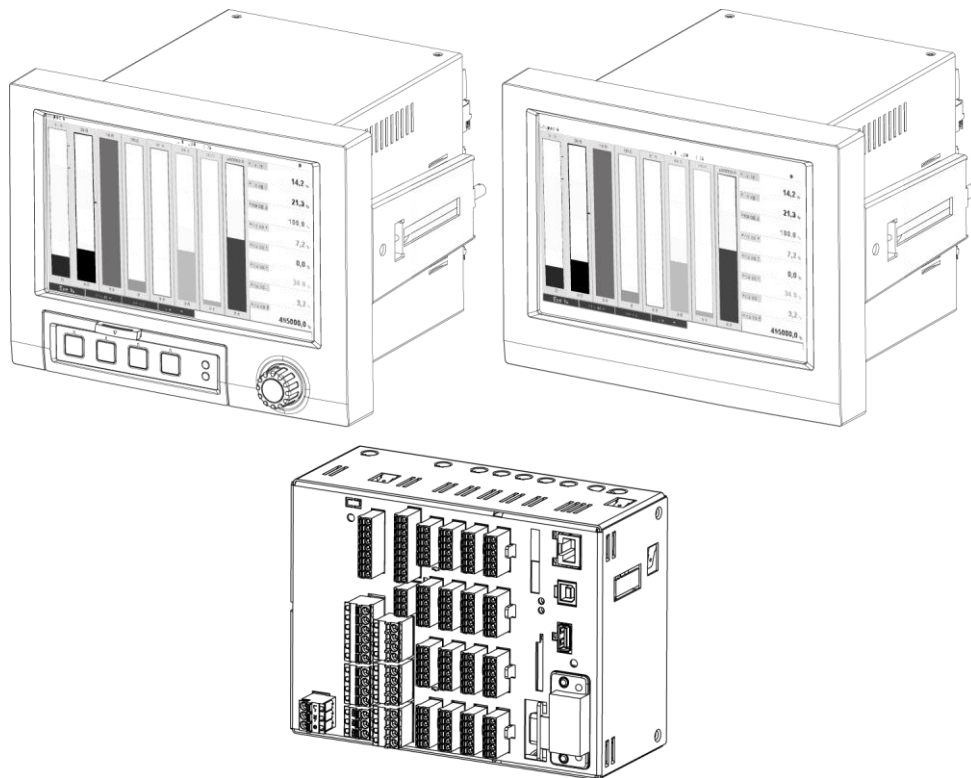


# Additional instructions

## Advanced Data Manager ORSG45

PROFINET Device



**Table of contents:**

<b>1 General information .....</b>	<b>3</b>
1.1 Scope of delivery .....	3
1.2 Firmware history .....	3
1.3 Connections .....	4
1.3.1 Network status LED .....	4
1.3.2 Module status LED .....	4
1.3.3 Port 1/2 status LED .....	4
1.4 Checking for the presence of the PROFINET module .....	5
1.5 Protocol-specific data .....	6
<b>2 Data transmission .....</b>	<b>6</b>
2.1 Communication settings .....	7
2.2 Cyclic data transfer .....	12
2.2.1 Input data: Data transfer, device -> PROFINET controller .....	12
2.2.2 Output data: Data transfer, PROFINET controller -> device .....	13
2.2.3 Coding of the status byte .....	14
2.2.4 Configuration of the cyclic data transfer .....	14
2.2.5 Checking whether cyclic data transfer is active .....	26
2.3 Acyclic data transfer .....	26
2.3.1 Transferring texts .....	26
2.3.2 Batch data .....	26
2.3.3 Relays .....	29
2.3.4 Changing limit values .....	29
<b>3 PROFINET troubleshooting .....</b>	<b>31</b>
<b>4 List of abbreviations/glossary of terms .....</b>	<b>31</b>

# 1 General information

Symbols:

**NOTICE****Note**

Failure to observe this sign can result in a device defect or a malfunction.

**Tip**

Indicates additional information.

## 1.1 Scope of delivery



These instructions provide an additional description of a special software option.

These additional instructions do **not** replace the corresponding operating instructions.  
Detailed information can be found in the operating instructions and additional documentation.

The GSD file suitable for the device can be found on the CD-ROM included in the scope of delivery, in the "GSD-GSDXML" directory.

## 1.2 Firmware history

Overview of unit software history:

Unit software version / date	Software modification	PROFINET Operating Instructions
V2.00.06 / 12.2015	Original software	BA01606O/09/01.16
V2.01.03 / 07.2016	Extended functionality/ bug fixes	BA01606O/09/02.16
V2.04.02 / 08.2018	Extended functionality/ bug fixes	BA01606O/09/03.18

## 1.3 Connections

1	Network status LED
2	Module status LED
3	Port 1 status LED
4	Port 2 status LED

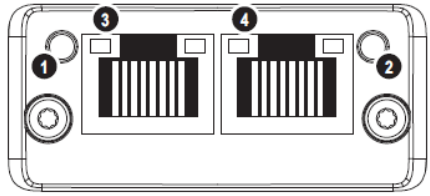


Table 1: View of the PROFINET connection on the back of the device

### 1.3.1 Network status LED

Network status LED	Indicator for
Off	Not online/no voltage
Green	Online, data transfer active
Green flashing (1 x flash)	Online, data transfer stopped or transferred data is incorrect
Green flashing	Flashing test for identifying the device in the network
Red	Fatal error in the PROFINET module (module status LED also lights up red)
Red flashing (1 x flash)	Device name not assigned
Red flashing (2 x flashes)	IP address not assigned
Red flashing (3 x flashes)	Slot/subslot configuration in the module differs from the receiving slot/subslot configuration

Table 2: Functional description of the network status LED

### 1.3.2 Module status LED

Module status LED	Indicator for
Off	No voltage or not initialized
Green	Initialized
Green flashing (1 x flash)	Initialized, diagnostics available
Red	Exception Error Fatal error in the PROFINET module (network status LED also lights up red)
Red/green flashing	Firmware update to the PROFINET module => During this phase the device must not be switched off as this can permanently damage the module.

Table 3: Functional description of the module status LED

### 1.3.3 Port 1/2 status LED

Port status LED	Indicator for
Off	Disconnected from the network
Green	Connected to the network, communication not active
Green flashing	Connected to the network, communication active

Table 4: Functional description of the port status LED

## 1.4 Checking for the presence of the PROFINET module

The following menus can be used to check whether an installed PROFINET module has been detected:

- a) "Main menu / Diagnostics / Device information / Device option / Fieldbus":

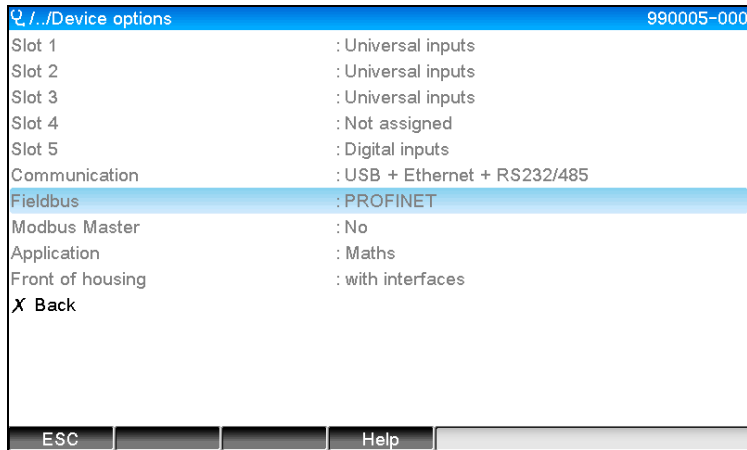


Figure 1: Checking for the presence of the PROFINET module under "Device options"

The "Fieldbus" menu item indicates whether and which fieldbus module has been detected. If it is a PROFINET module, this is indicated as shown above.

- b) "Main menu / Diagnostics / PROFINET":

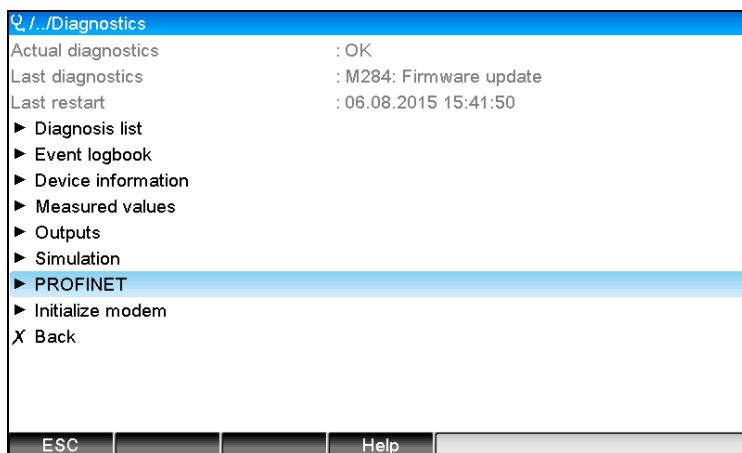


Figure 2: Checking for the presence of the PROFINET module under "Diagnostics"

In contrast to option a) this menu item is only displayed if a PROFINET module has been detected. A more detailed description of this menu can be found in Section 2 "Data transmission".

If a PROFINET module has been detected, the additional information "Anybus", "Firmware version" and "Serial number" relating to the detected module is displayed under "Main menu / Diagnostics / Device information / Hardware".

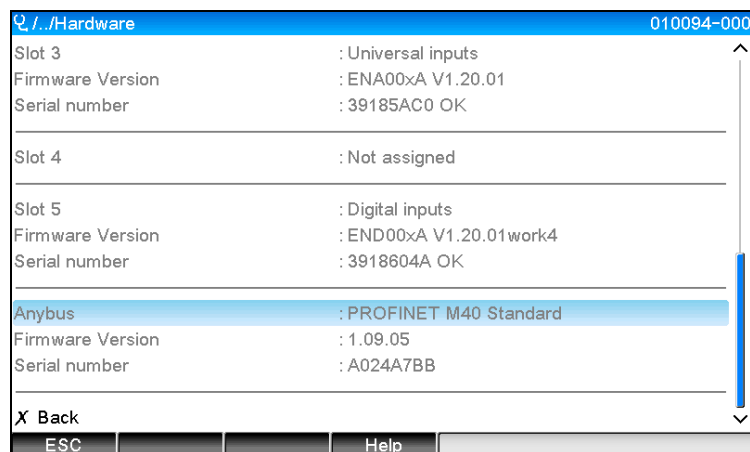


Figure 3: Information about the detected PROFINET module under "Hardware"

## 1.5 Protocol-specific data

Protocol	"Application layer protocol for decentral device periphery and distributed automation", version 2.3.1
Conformance class	B (additional features: Legacy, MRP, DeviceAccess)
Netload class	III
Communication type	100 MBit/s
Device profile	Application interface identifier 0xF600 Generic device
Manufacturer ID	0x11
Device ID	0x86FA
Device description files (GSD)	Information and files at: <ul style="list-style-type: none"> <li>■ On the CD-ROM supplied</li> <li>■ <a href="http://www.profibus.org">www.profibus.org</a></li> </ul>
Baud rates	Automatic 100 Mbit/s with full-duplex detection
Cycle times	From 1 ms
Polarity	Auto-polarity for automatic correction of crossed TxD and RxD pairs
Supported connections	<ul style="list-style-type: none"> <li>■ 1 x AR (Application Relation) <ul style="list-style-type: none"> <li>○ 1 x Input/Output CR (Communication Relation)</li> <li>○ 1 x Alarm CR (Communication Relation)</li> <li>○ 1 x Record Data CR (Communication Relation)</li> </ul> </li> <li>■ 2 x AR (Application Relation) <ul style="list-style-type: none"> <li>○ 1x Record Data CR (Communication Relation)</li> </ul> </li> </ul>
Configuration of device name	DCP protocol

## 2 Data transmission

All parameters relevant to PROFINET data transmission are summarized in the main menu under **"Diagnostics / PROFINET"**.

This is divided into two main areas:

1. Communication
  - See the "Communication settings" section
2. Configuration of the cyclic data transfer
  - See the "Configuration of the cyclic data transfer" section

## 2.1 Communication settings

The settings used for PROFINET communication are displayed in this menu. The parameters ("MAC address" to "Name of station") and their current values are displayed in Section 3 "PROFINET communication settings":

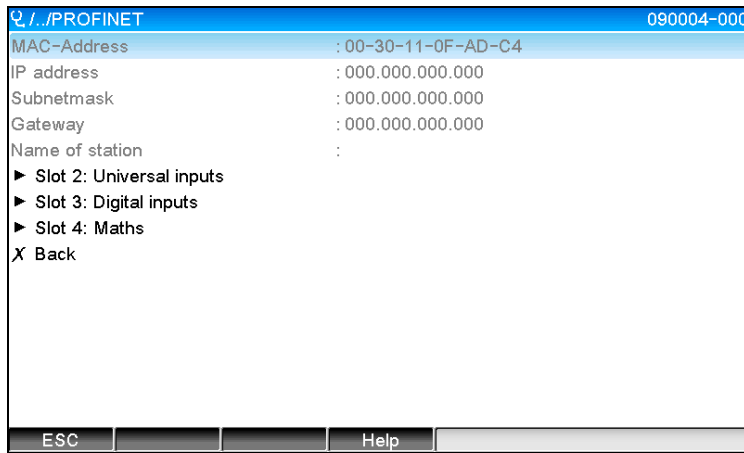


Figure 4: PROFINET communication settings

The MAC address is a unique hardware address that is stored in the device and cannot be changed. It is used to identify the device in a network, for example.

With the exception of the MAC address, all other parameters are configured via the fieldbus (PROFINET controller or a corresponding tool). This display is used to check whether and which communication settings are used.

The manner in which the parameters "IP address", "Subnet mask", "Gateway", and "Name of station" are configured depends on and must be determined by referring to the tool used.

### Manual configuration: (SIMATIC Manager STEP7 V5.5)

One option for manual configuration using the "SIMATIC Manager STEP7 V5.5" tool is explained below. A prerequisite for this is that the computer used (PC, laptop, etc.) is connected to the PROFINET network and that the tool is pre-configured for accessing the PROFINET network.

#### Step 1)

In the SIMATIC Manager main menu, select "PLC -> Edit Ethernet Node...":

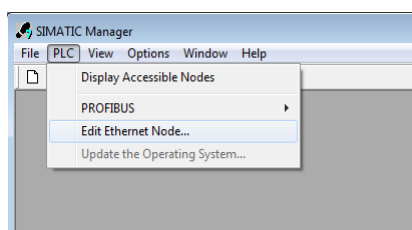


Figure 5: Configuring the address, step 1

#### Step 2)

A new window, "Edit Ethernet Node...", opens. In this window, click on "Browse...". Another window opens, which displays the devices in the PROFINET network. Select the PROFINET device to be configured and confirm with OK:

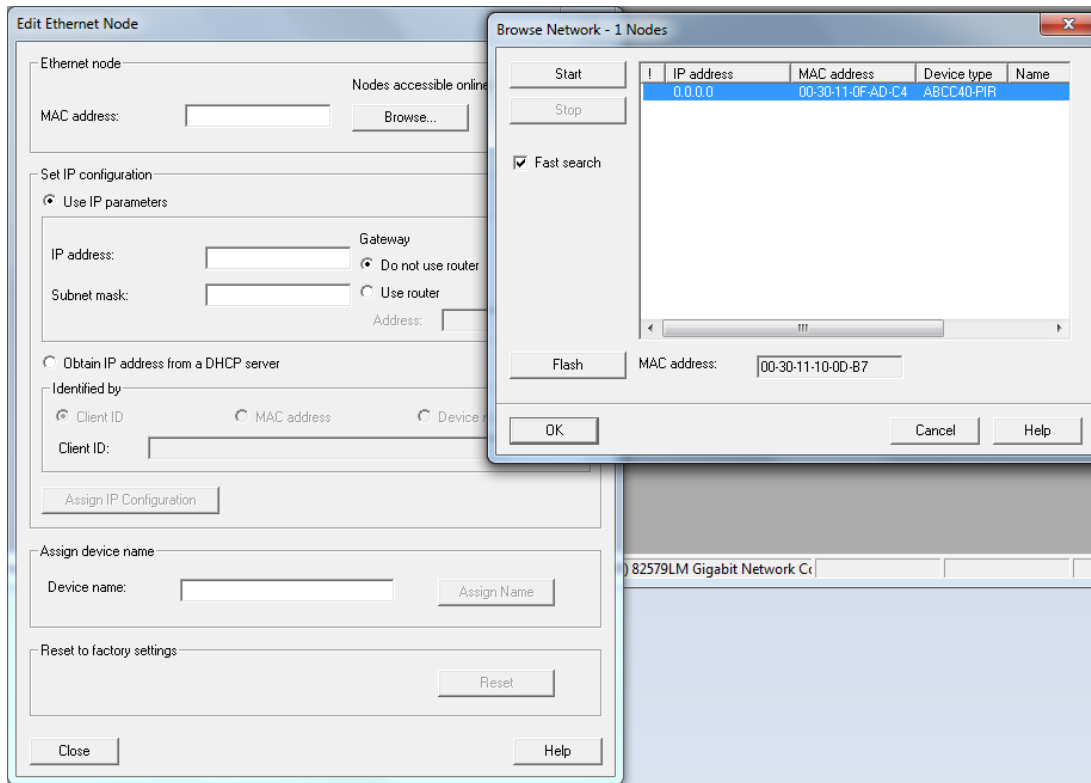


Figure 6: Configuring the address, step 2

The MAC address can be used to select the device as this is unique to each device.

### Step 3)

The MAC address of the selected device is now displayed under "Ethernet node".

The "IP address" and "Subnet mask" can now be set under "Set IP configuration" and the device name (= "Name of station") can be set under "Assign device name". In this case, the "Gateway" settings are made by the tool itself as the "Do not use router" option has been selected.



Example configuration:

Figure 7: Configuring the address, step 3

Step 4)  
By pressing "Assign IP Configuration" and "Assign Name", the settings are sent to the device.

The settings are then shown in the device's main menu under **"Diagnostics / PROFINET"**:

Figure 8: Configuring the address, step 4

**Manual configuration:** (TIA Portal STEP7 V13)

One option for manual configuration using the "TIA Portal STEP7 V13" tool is explained below. A prerequisite for this is that the computer used (PC, laptop, etc.) is connected to the PROFINET network and that the tool is pre-configured for accessing the PROFINET network.

**Step 1)**

In the TIA Portal project view, select "Project tree -> Online access" and then select "Update accessible devices" under the relevant network connection:

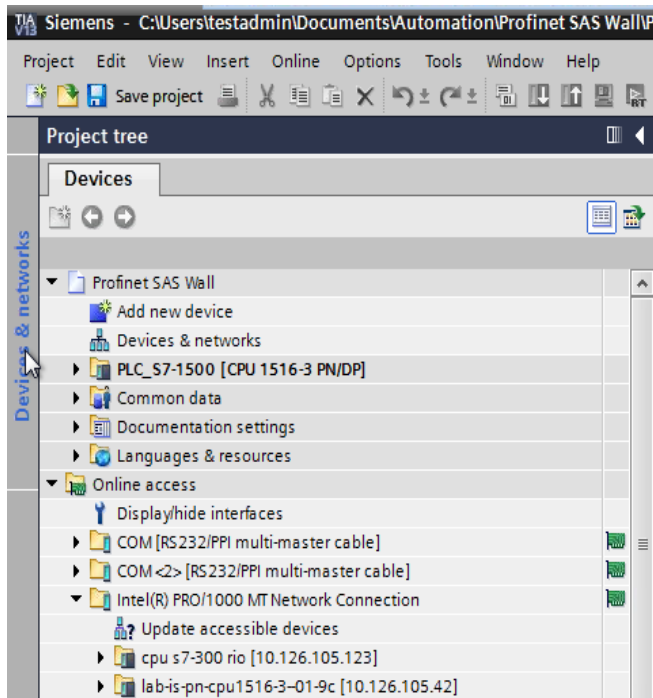


Figure 9: Configuring the address, step 1

**Step 2)**

Select the PROFINET device to be configured and double-click to open the Online & diagnostics window. The MAC address can be used to select the device as this is unique to each device:

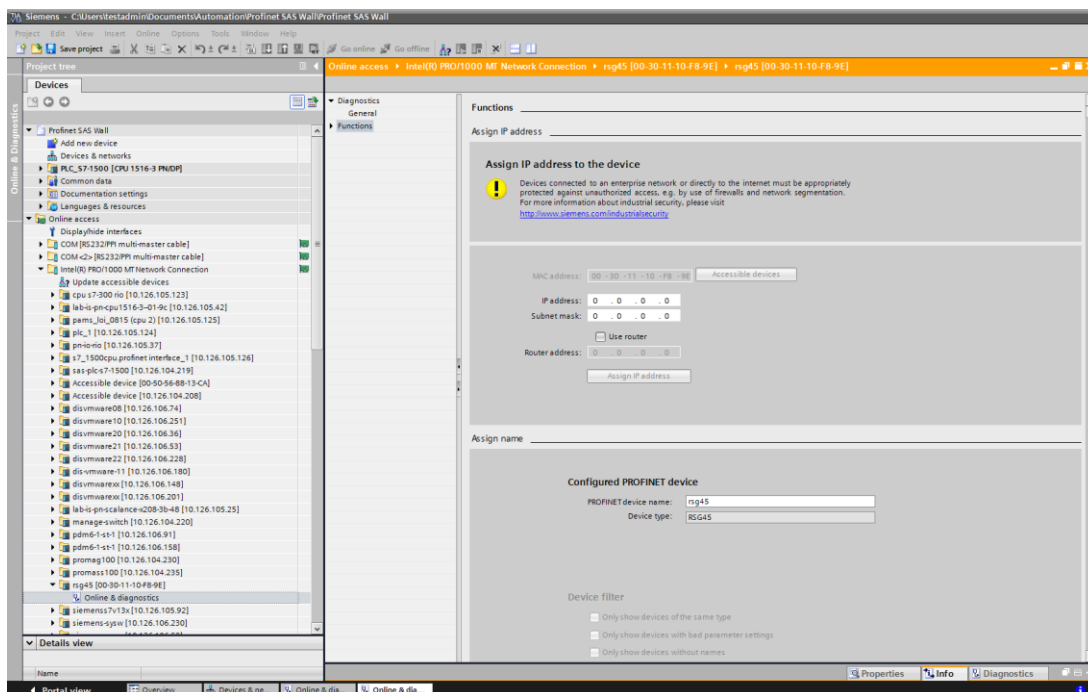


Figure 10: Configuring the address, step 2

Step 3)  
The MAC address of the selected device is now displayed under "Functions".  
The "IP address" and "Subnet mask" can now be set in the "Assign IP address" area and the device name (= "Name of station") can be set under "Assign name". In this case, the "Gateway" settings are made by the tool itself as the "Do not use a router" option has been selected.

Example configuration:

Functions

Assign IP address

Assign IP address to the device

!

Devices connected to an enterprise network or directly to the internet must be appropriately protected against unauthorized access, e.g. by use of firewalls and network segmentation. For more information about industrial security, please visit <http://www.siemens.com/industrialsecurity>

MAC address: 00 - 30 - 11 - 10 - F8 - 9E

Accessible devices

IP address: 10 . 126 . 104 . 229

Subnet mask: 255 . 255 . 252 . 0

☐ Use router

Router address: 0 . 0 . 0 . 0

Assign IP Address

Assign name

Configured PROFINET device


PROFINET device name: rsg45

Device type: RSG45

Figure 11: Configuring the address, step 3

Step 4)  
Pressing "Assign IP configuration" and "Assign name" sends the settings to the device.

The settings are then shown in the device's main menu under **"Diagnostics / PROFINET"** and in the Web server:



Device name : Memograph M

Device tag : RSG45 Testnetwork

Status signal : 

OK

Menu > Diagnostics > PROFINET

MAC-Address00-30-11-10-F8-9E

IP address010.126.104.229

Subnetmask255.255.252.000

Gateway010.126.104.229

Name of stationrsg45

> Slot 2: Universal inputs

> Slot 3: Digital inputs

> Slot 4: Maths

Figure 12: Configuring the address, step 4

11

## 2.2 Cyclic data transfer

PROFINET can be used to cyclically transfer the values of universal inputs 1-40, digital inputs 1-20, and mathematics channels 1-12.

The cyclic data transfer is configured exclusively via the PROFINET controller, which sends the configuration to the device once the connection for cyclic data transfer has been established. The device receives the configuration, checks its validity, and adapts to the new configuration, provided this is valid. No settings are made in the device itself. A more detailed description of the process can be found in the "Configuration of the cyclic data transfer" section.

Explanation of the data types used:

- Uint8: 1 byte, integer
- Uint16: 2 bytes, integer
- Float32: 4 bytes, floating point number (IEEE-754, short precision)
- Float64: 8 bytes, floating point number (IEEE-754, long precision)

Every value is always transferred with a status byte, which describes its usability and follows the actual value directly.

Example: Instantaneous value (Float32+Uint8)

- Value: Float32 => 4 bytes
- Status: Uint8 => 1 byte (see the "Coding of the status byte" section)
- Transferred data (5 bytes): Byte 0-3: Float32; Byte 4: Status

### 2.2.1 Input data: Data transfer, device -> PROFINET controller

Input data consists of values that are sent from a device to the PROFINET controller during the cyclic data transfer.

The following values can be sent from the device to the PROFINET controller:

Value	Data structure	Data size (bytes)	Read from
Instantaneous value	Value: Float32 Status: Uint8	5	Universal inputs, mathematics channels
Digital state	Value: Uint16 Status: Uint8	3	Digital inputs, mathematics channels
Totalizer (Float32)	Value: Float32 Status: Uint8	5	Universal inputs, digital inputs, mathematics channels
Totalizer (Float64)	Value: Float64 Status: Uint8	9	Universal inputs, digital inputs, mathematics channels

Table 5: Transferable input data

The interpretation of the read value depends on the configuration of the input/channel. The instantaneous value of a universal input, for example, can be the result of a thermocouple measurement or a current measurement, for example.

For a detailed description of how to configure the inputs/channels, see the standard operating instructions.

### 2.2.2 Output data: Data transfer, PROFINET controller -> device

Output data consists of values that are sent from a PROFINET controller to the device during the cyclic data transfer.

The following values can be sent from the PROFINET controller to the device:

Value	Data type	Data size (bytes)	Written to
Instantaneous value	Value: Float32 Status: UInt8	5	Universal inputs
Digital state	Value: UInt16 Status: UInt8	3	Digital inputs

Table 6: Receivable output data

In order for a value received by the PROFINET controller to be used, the input (universal/digital) must be configured accordingly. To do this, "PROFINET" must be selected as the signal in the input. If this is not the case, the received value incl. status byte is only buffered; it is not further processed or saved in the device.

Example for universal input 4:

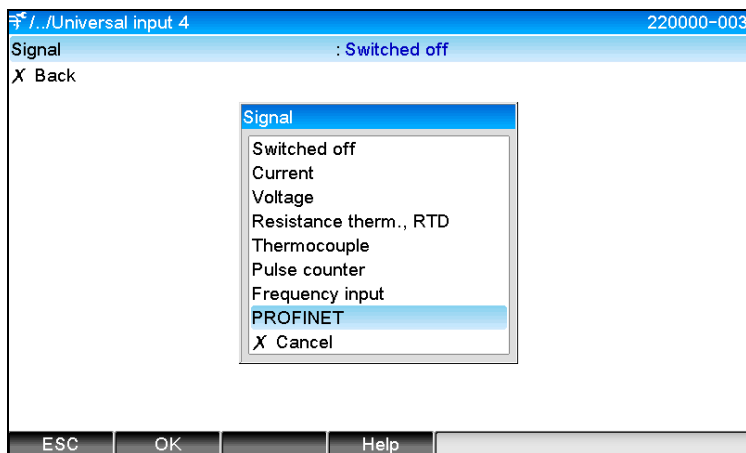


Figure 13: Configuring PROFINET as the input signal

## 2.2.3 Coding of the status byte

### 2.2.3.1 Input data

The status byte of an input/channel, which is sent to the PROFINET controller, can contain the following values:

Value (in hex format)	Meaning	Possible causes
0x24	Transferred value cannot be used	<ul style="list-style-type: none"> <li>▪ Cable open circuit</li> <li>▪ Short-circuit</li> <li>▪ Sensor/input error</li> <li>▪ Calculated value invalid</li> </ul>
0x28	Transferred value cannot be used	<ul style="list-style-type: none"> <li>▪ Value falls below the measuring range of the sensor</li> <li>▪ Measuring range of the sensor exceeded</li> </ul>
0x4B	Value uncertain	<ul style="list-style-type: none"> <li>▪ Input/channel returns equivalent value instead of the calculated value</li> </ul>
0x80	Value OK	

Table 7: Coding of the status byte for input data

### 2.2.3.2 Output data

The status byte of an input, which is send by the PROFINET controller, interprets the device as follows:

Value (in hex format)	Meaning
0x00 – 0x3F	Value cannot be used
0x40 – 0x7F	Value uncertain => value is used but with error display
0x80 – 0xFF	Value OK

Table 8: Interpretation of the status byte in the case of output data

## 2.2.4 Configuration of the cyclic data transfer

The cyclic data transfer is configured exclusively in the PROFINET controller. The input/channel or its input and/or output data is selected via the slot/subslot configuration with which a PROFINET controller is configured (see "Slot/subslot configuration" section).

The currently used (cyclic data transfer active) or most recently saved (cyclic data transfer not active) configuration is displayed in the device (see "Display of the slot/subslot configuration in the device" section).

### 2.2.4.1 Slot/subslot configuration

The slot configuration defines whether and which channel type is used.

The configuration of the subslots of a slot defines which input and/or output data is used. The subslot number determines the channel number in the device.

The table below shows the allocation of inputs/channels to the slots/subslots:

Slot	ModulIdentNumber	Channel type	Subslot	Input/channel
2	0x02000028	Universal inputs	1	Universal input 1
			2	Universal input 2
			...	...
			39	Universal input 39
			40	Universal input 40
3	0x03000014	Digital inputs	1	Digital input 1
			2	Digital input 2
			...	...
			19	Digital input 19
			20	Digital input 20
4	0x0400000C	Mathematics channels	1	Mathematics channel 1
			2	Mathematics channel 2
			...	...
			11	Mathematics channel 11
			12	Mathematics channel 12

Table 9: Slot/subslot-&gt;Inputs/channels

In order to distinguish which value or value combination is sent and/or received, the subslots are configured via SubmodulIdentNumbers. The table below provides an overview of the available SubmodulIdentNumbers as well as their assignment to the inputs/channels:

SubmodulIdent Number	Data source	Data direction	Length (bytes)	Available in
0x01000001	In: Instantaneous value	Input data only	In: 5	Universal inputs, mathematics channels
0x01000002	In: Digital state	Input data only	In: 3	Digital inputs, mathematics channels
0x01000003	In: Totalizer (Float32)	Input data only	In: 5	Universal inputs, digital inputs, mathematics channels
0x01000004	In: Totalizer (Float64)	Input data only	In: 9	Universal inputs, digital inputs, mathematics channels
0x01000005	In: Instantaneous value + totalizer (Float32)	Input data only	In: 10 (=5+5)	Universal inputs, mathematics channels
0x01000006	In: Instantaneous value + totalizer (Float64)	Input data only	In: 14 (=5+9)	Universal inputs, mathematics channels
0x01000007	In: Digital state + totalizer (Float32)	Input data only	In: 8 (=3+5)	Digital inputs
0x01000008	In: Digital state + totalizer (Float64)	Input data only	In: 12 (3+9)	Digital inputs
0x02000001	Out: Instantaneous value	Output data only	Out: 5	Universal inputs
0x02000002	Out: Digital state	Output data only	Out: 3	Digital inputs
0x03000001	In: Totalizer (Float32) Out: Instantaneous value	Input/output data	In: 5 Out: 5	Universal inputs
0x03000002	In: Totalizer (Float64) Out: Instantaneous value	Input/output data	In: 9 Out: 5	Universal inputs
0x03000003	In: Totalizer (Float32) Out: Digital state	Input/output data	In: 5 Out: 3	Digital inputs
0x03000004	In: Totalizer (Float64) Out: Digital state	Input/output data	In: 9 Out: 3	Digital inputs

Table 10: SubmodulIdentNumber &lt;-&gt; Input/output data

In the case of value combinations that return several values in one data direction (xx + yy), the order in the list determines the order of transfer.

Example: "0x01000005":

In: Instantaneous value + totalizer (Float32)  
 Data length: 10 bytes  
 Byte 0-4: Instantaneous value incl. status byte  
 Byte 5-9: Totalizer (Float32) incl. status byte

#### 2.2.4.2 Configuration of a PROFINET controller

In order to configure a PROFINET controller for the cyclic data transfer, the device description file "GSDML-Vu.uu-vvvv-xxxxxyzz.xml" must be used. The final digits ("xxxxxyzz") in the file name describe the output time:

- xxxx = Year
- yy = Month
- zz = Day

The first released file has the designation "GSDML-V2.32-EH-RSG45-xxxxxyzz.xml" and is only available in English.

This file contains all the information required for operation and is imported into the tool used to configure the PROFINET Controller. The configuration process depends on and must be determined by referring to the tool used.

GSDML-File	Compatible Firmware
GSDML-V2.32-EH-RSG45-xxxxxyzz.xml	V2.00.06 – V2.01.03
GSDML-V2.34-EH-RSG45-xxxxxyzz.xml	From V2.04.02

Configuration based on a Siemens controller (S7 315-2 PN/DP) using the "SIMATIC STEP 7 V5.5" and "TIA Portal STEP 7 V13" tool is explained below. Some experience with the tool is required (creating a project, importing a GSD file) as these steps are not explained in any more detail here.

##### 2.2.4.2.1 Selecting the device in HW-Config (SIMATIC STEP 7 V5.5)

After importing the GSD file, the device can be found in the catalog under **"PROFINET IO -> Additional field devices -> General -> ...RSG45"**:

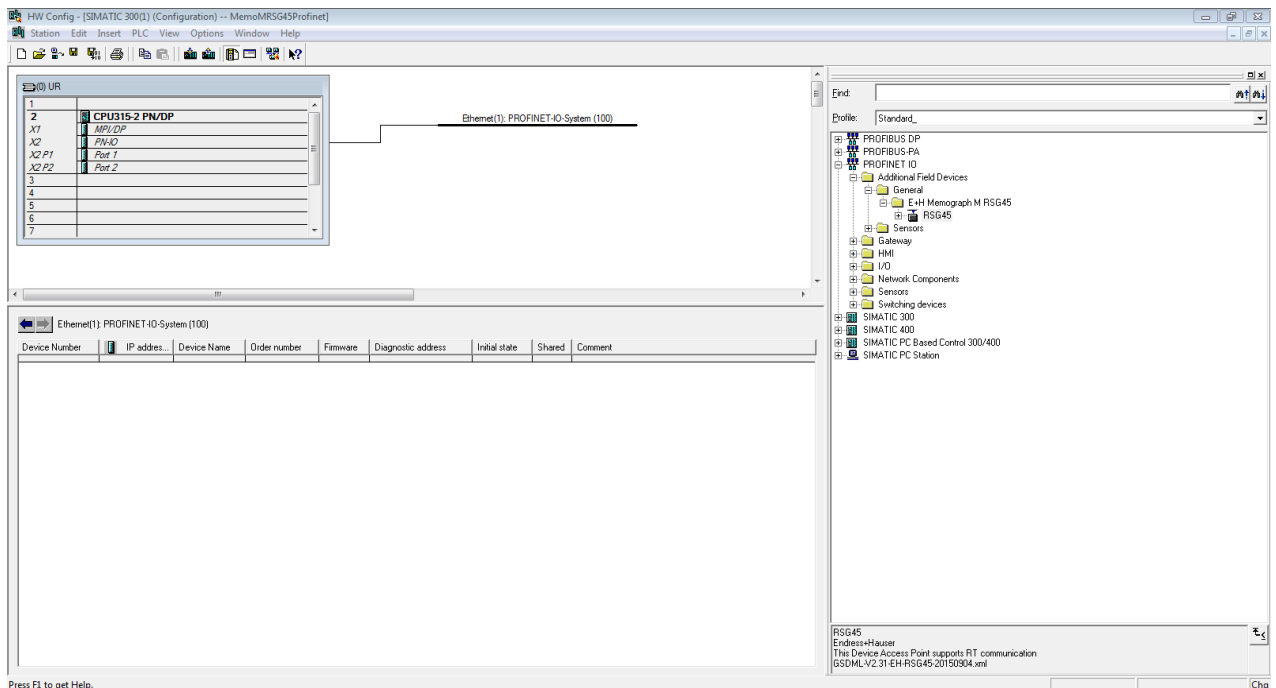


Figure 14: Display of the device in the HW-Config catalog



Left-click on "RSG45" and, with keeping the mouse button held down, connect the device to the PROFINET network:

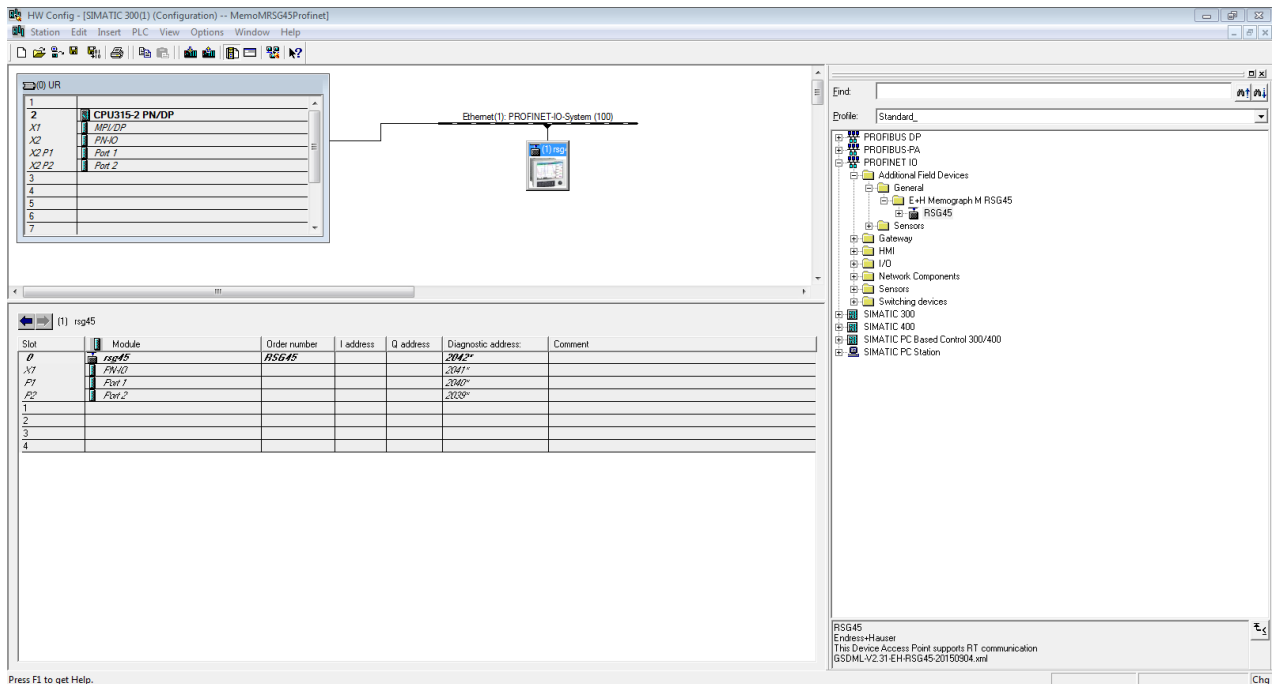


Figure 15: Device connected to PROFINET network

In the standard configuration, all slots, with the exception of slot 0 (corresponds to slot 0 in the above figure), are empty. In slot 0, the "Device Access Point" is permanently configured with the following structure:

#### Slot 0: DAP

- 0: rsg45  
Description/configuration of the device: The name assigned in this configuration (=Name of station) is displayed here. The name assigned in the configuration must match the name set in the device, as the device is identified for the cyclic data exchange based on its name.
- X1: PN-IO  
Description/configuration of the PROFINET interface: Update times, monitoring times, media redundancy, etc.
- P1: Port 1 / P2: Port2  
Description/configuration of the physical ports: Topology, available options, etc.

Slot 1 is not currently used and cannot currently be configured.  
Any configuration of this slot will be rejected by the device.

### 2.2.4.2.2 Selecting the device in the TIA Portal STEP 7 V13 hardware catalog

After importing the GSD file, the device can be found in the catalog under "PROFINET IO->Other field devices->General-> E+H Memograph M RSG45".

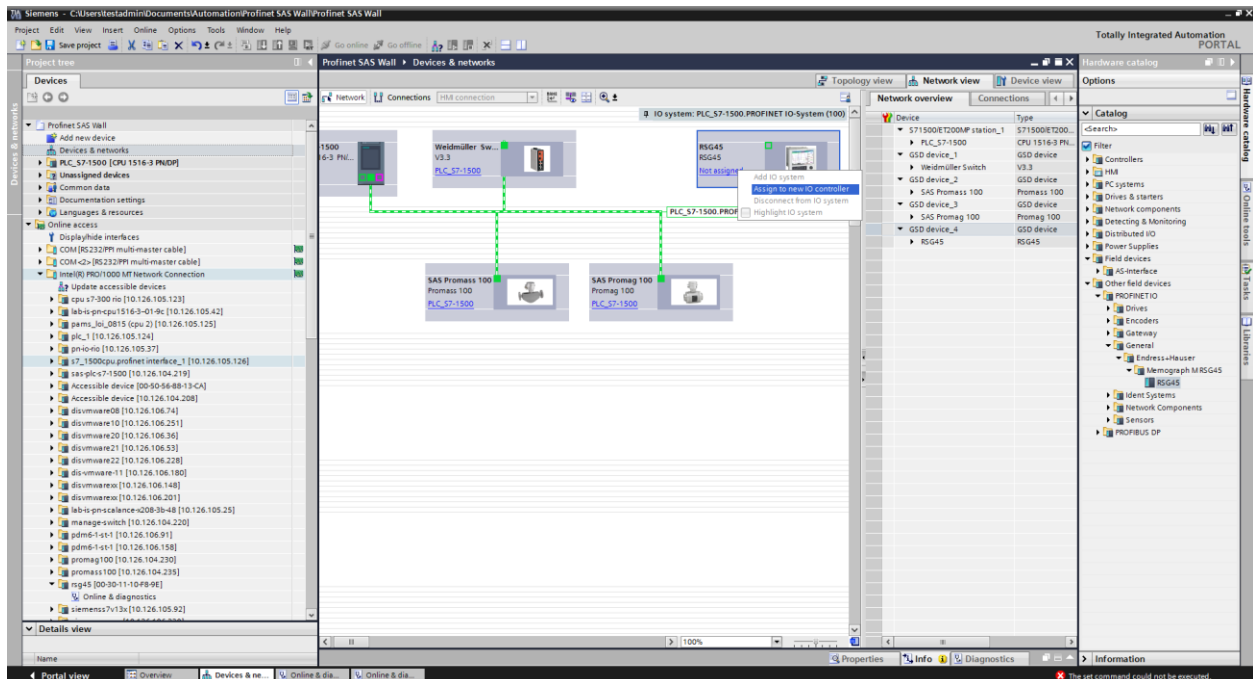


Figure 16: Device displayed in the hardware catalog

Left-click on the device "RSG45". Then, keeping the mouse button pressed, drag the device into the network view and then assign it to a PROFINET network (IO controller):

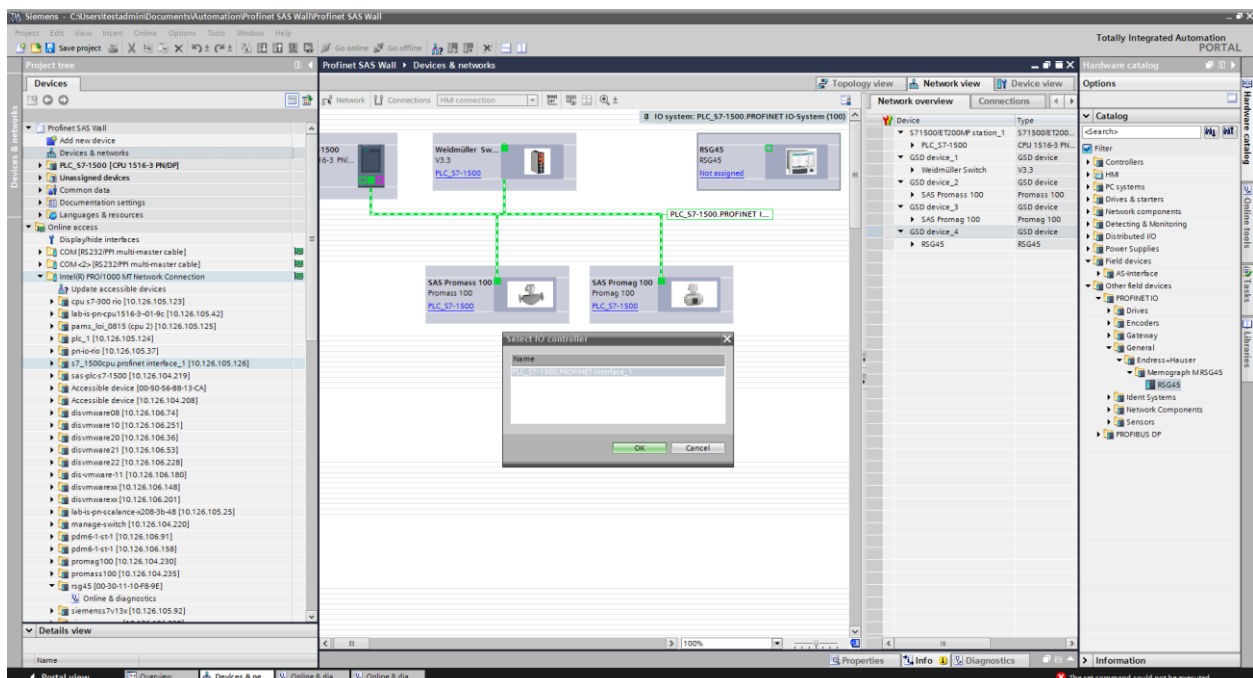
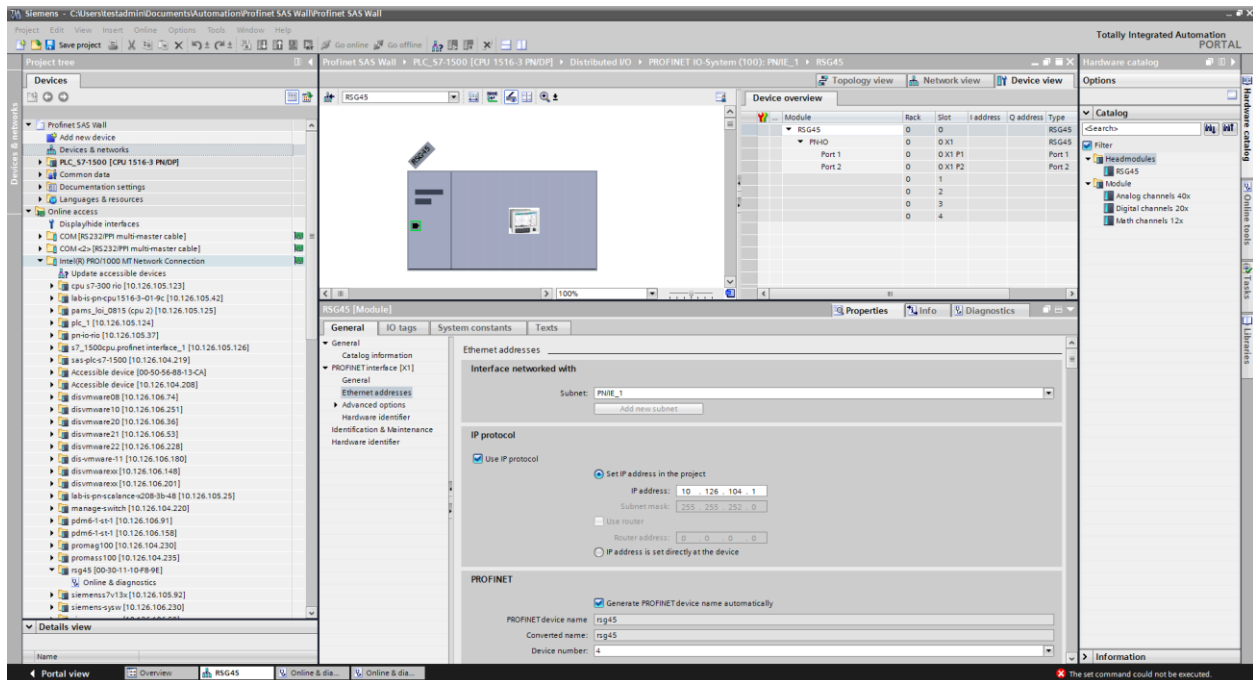


Figure 17: Assigning the device to a PROFINET network (IO controller)



In the standard configuration, all slots, with the exception of slot 0 (corresponds to slot 0 in the figure above), are empty. In slot 0, the "Device Access Point" is permanently configured with the following structure:

#### Slot 0: DAP

- 0: rsg45  
Description/configuration of the device: The name assigned in this configuration (=Name of station) is displayed here. The name assigned in the configuration must match the name set in the device, as the device is identified for the cyclic data exchange based on its name.
- X1: PN-IO  
Description/configuration of the PROFINET interface: Update times, monitoring times, media redundancy, etc.
- P1: Port 1 / P2: Port2  
Description/configuration of the physical ports: Topology, available options, etc.

Slot 1 is not currently used and cannot currently be configured.  
Any configuration of this slot will be rejected by the device.

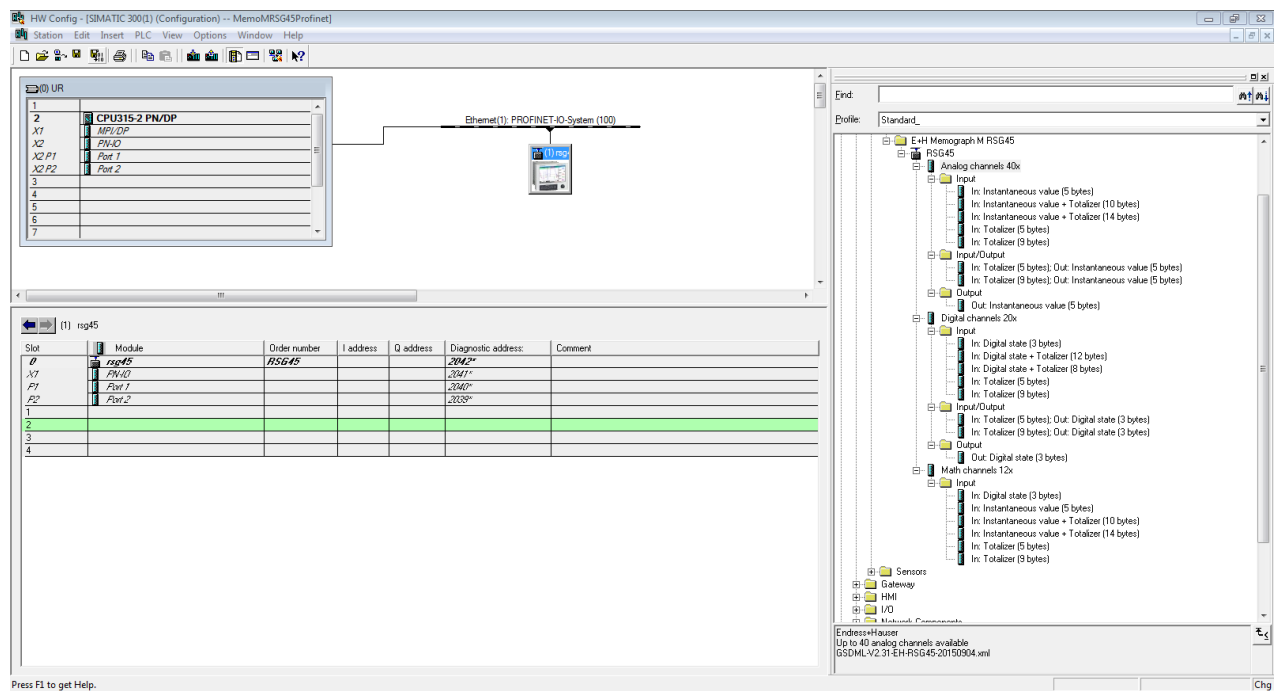
### 2.2.4.2.3 Selecting the data to be transferred (SIMATIC STEP 7 V5.5 and TIA Portal V13)

The cyclic data is configured in two steps:

In the first step, the type and number of available inputs/channels is selected via the configuration of the slot with a module.

In the second step, the input/channel and the data to be transferred are determined via the configuration of the subslot with a submodule.

The figure below provides an overview of available modules and submodules based on the specifications from "Table Slot/subslot<->Inputs/channel" and "Table SubmoduleIdentifierNumber <-> Input/output data":



Press F1 to get Help.

Figure 18: Slot/subslot configuration in HW-Config

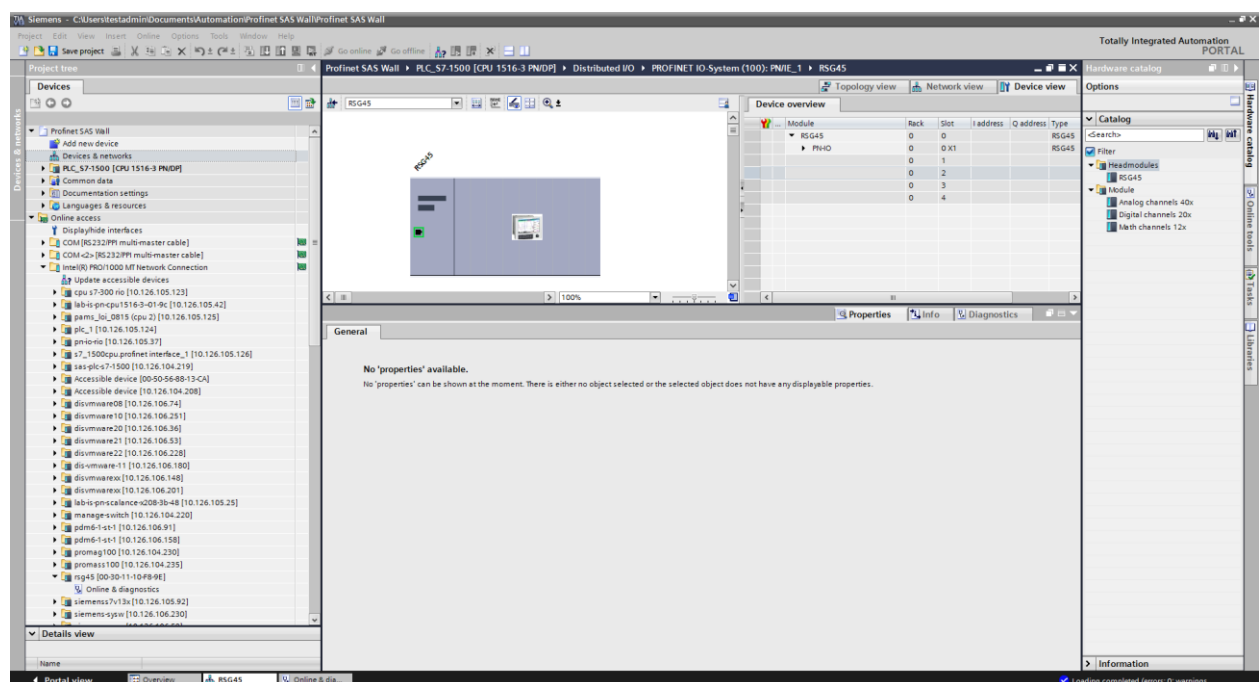


Figure 19: Slot/sub-slot configuration in TIA Portal

In order to provide a clearer overview, the selectable submodules of a module are divided into three categories:

1. Input:  
All submodules available for selection that only return input data are summarized here
2. Input/output:  
All submodules available for selection that both return input data and receive output data are summarized here
3. Output:  
All submodules available for selection that only receive output data are summarized here

Depending on the tool used, either the ModulIdentNumber/SubmodulIdentNumber and/or the text for the ModulIdentNumber/SubmodulIdentNumber stored in the GSD file is displayed. In this case, the stored text is displayed instead of the ModulIdentNumber/SubmodulIdentNumber:

Displayed text		ModulIdentNumber	SubmodulIdentNumber
<b>Module</b>	Analog channels 40x	0x02000028	
	Digital channels 20x	0x03000014	
	Math channels 12x	0x0400000C	
<b>Submodule</b>	In: Instantaneous value (5 bytes)		0x01000001
	In: Digital state (3 bytes)		0x01000002
	In: Totalizer (5 bytes)		0x01000003
	In: Totalizer (9 bytes)		0x01000004
	In: Instantaneous value + totalizer (10 bytes)		0x01000005
	In: Instantaneous value + totalizer (14 bytes)		0x01000006
	In: Digital state + totalizer (8 bytes)		0x01000007
	In: Digital state + totalizer (12 bytes)		0x01000008
	Out: Instantaneous value (5 bytes)		0x02000001
	Out: Digital state (3 bytes)		0x02000002
	In: Totalizer (5 bytes); Out: Instantaneous value (5 bytes)		0x03000001
	In: Totalizer (9 bytes); Out: Instantaneous value (5 bytes)		0x03000002
	In: Totalizer (5 bytes); Out: Digital state (3 bytes)		0x03000003
	In: Totalizer (9 bytes); Out: Digital state (3 bytes)		0x03000004

Table 11: Module/submodule texts in GSD file<->ModulIdentNumber/SubmodulIdentNumber

A configuration is shown below based on the digital inputs; this is identical, however, for all other inputs/channels.

First, slot 3 must be configured with the "Digital channels 20x" module. Once this is complete, the display expands by the number of configurable subslots:

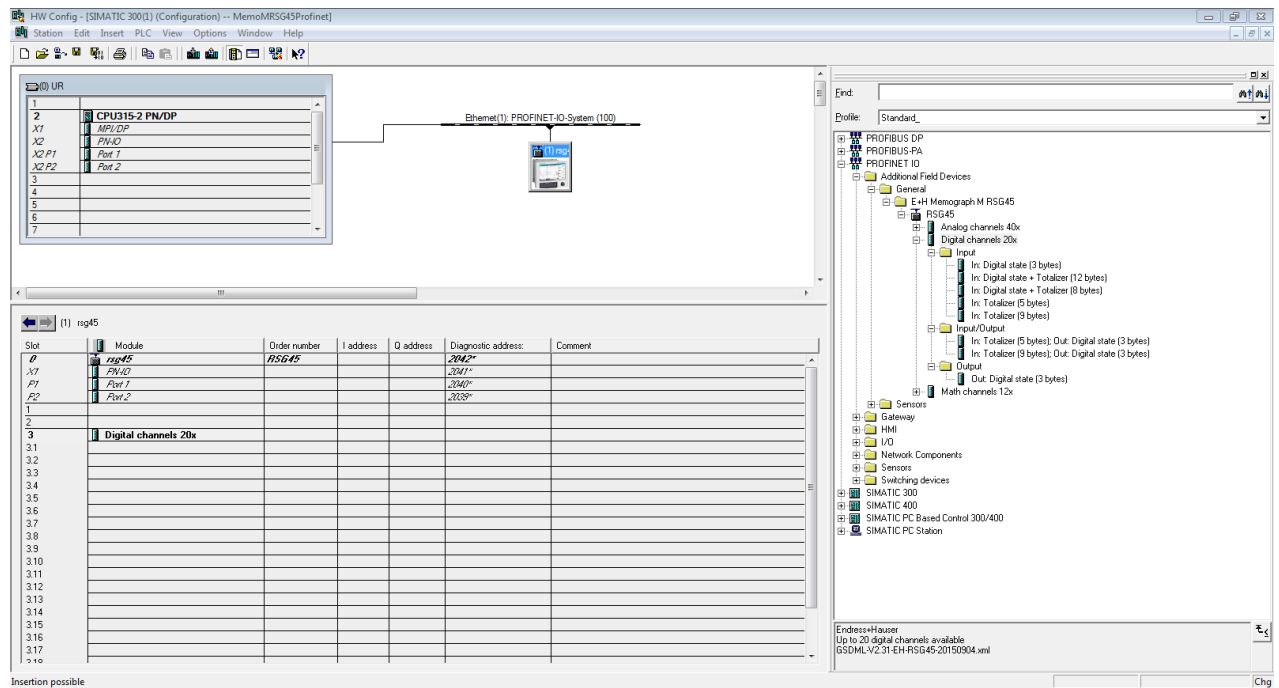


Figure 20: Display of configurable subslots

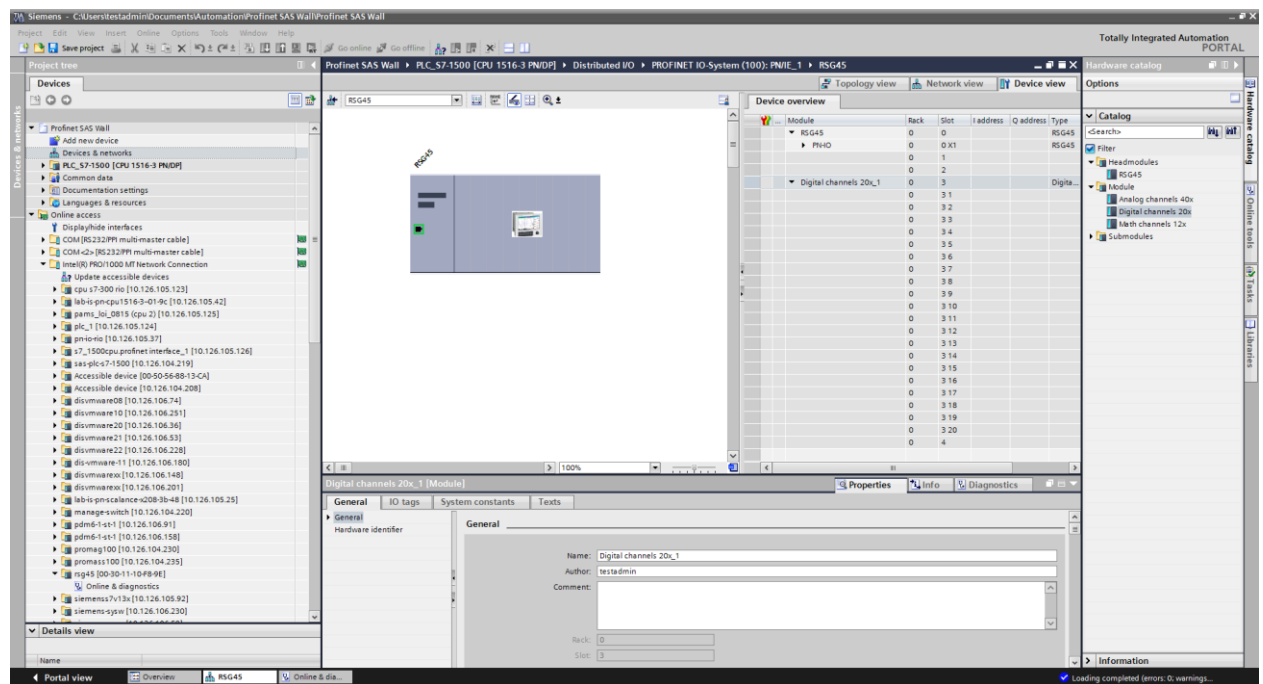


Fig. 21: Configurable sub-slots displayed in the TIA Portal

The subslots can now be configured with the corresponding submodules. In this example, all available submodules are distributed between subslots 1-8 (corresponds to digital inputs 1-8) so that each subslot is configured with another submodule:

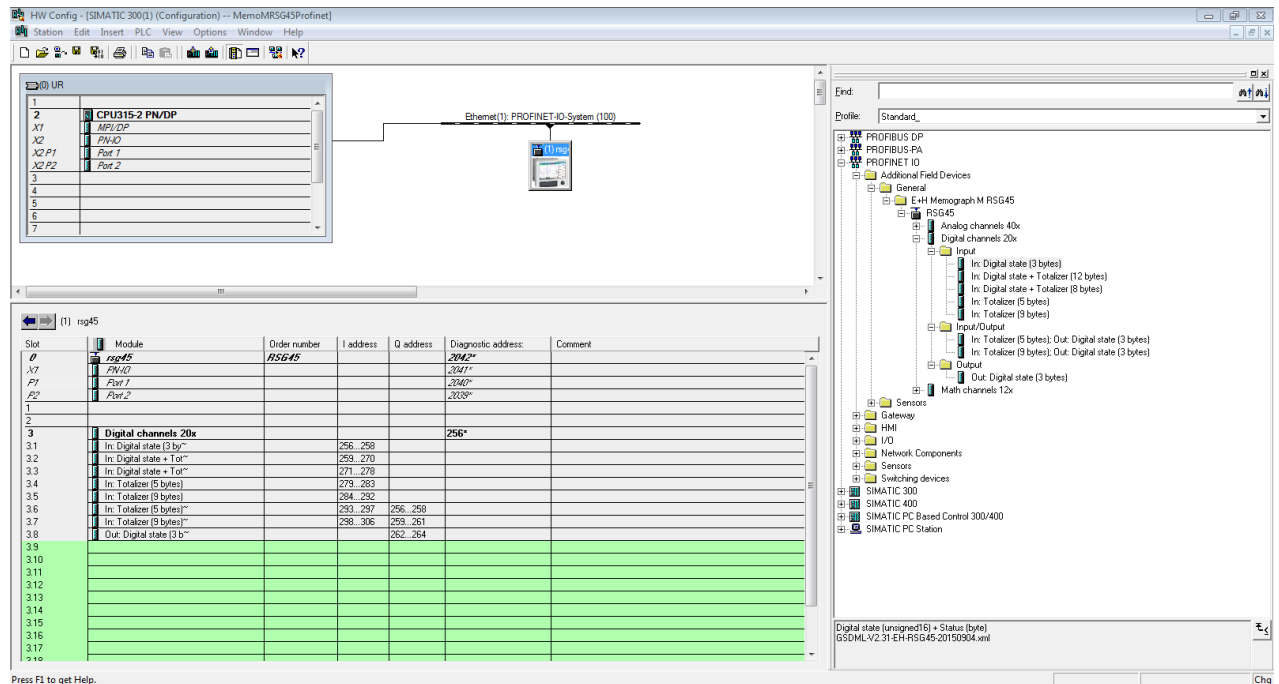


Figure 22: Configuration of digital inputs

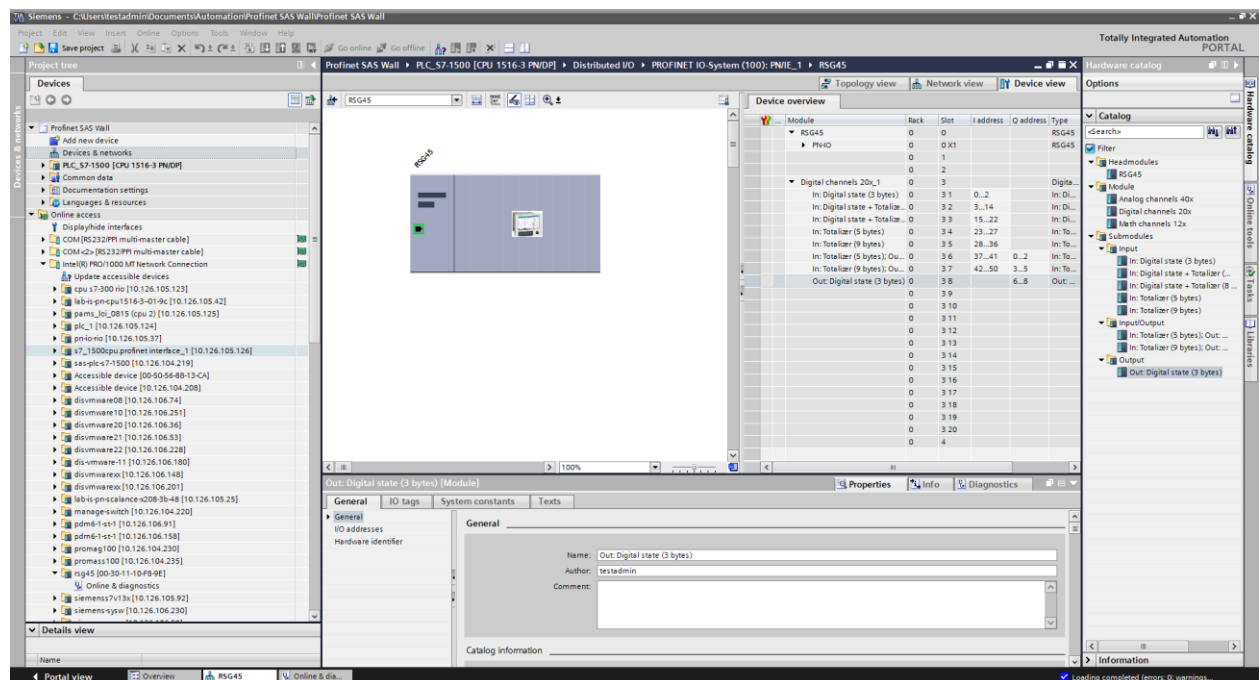


Figure 23: Configuration of digital inputs in the TIA Portal

#### NOTICE

During the configuration, the total number of bytes transferred in each data direction must not exceed 280 bytes. These limit values (input: max. 280 bytes; output: max. 280 bytes) are stored in the GSD file and are generally also verified by the tool used.

Once the slot/subslot configuration is complete, this is transferred to the controller.

Once it has received the slot/subslot configuration, the controller attempts to start the cyclic data transfer. When the connection is established, the slot/subslot configuration is sent to the device. During the adaptation phase, the device may disappear briefly from the PROFINET network. This happens if the device has received a configuration that requires the PROFINET interface to be restarted.

#### 2.2.4.2.4 Adapting the device to the received configuration

While establishing a connection, the PROFINET controller sends the slot/subslot configuration to the device, where it is checked for validity. In the event of an invalid configuration, the device ignores the received configuration and retains the current configuration. If the configuration is valid, the device adapts accordingly. If the configuration is identical to the current configuration, the device starts the cyclic data transfer immediately. If, on the other hand, the received configuration differs from the current configuration, the device disconnects briefly from the PROFINET network in order to restart the PROFINET interface with the new configuration. The restart can be monitored/checked as follows:

- 1) "Main menu / Diagnostics / PROFINET":

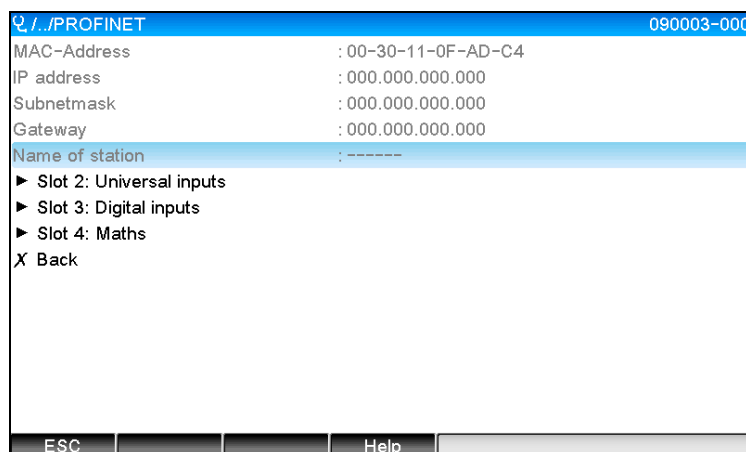


Figure.24: Display of the restart in the PROFINET menu

While the PROFINET interface is restarting, the "IP address", "Subnet mask" and "Gateway" connection settings are set to 0 and the name configured under "Name of station" is set to "-----". After the restart, this information reappears according to the configured data.

This procedure is carried out every time the PROFINET interface is restarted. A restart can be triggered by the following actions:

- a) Adaptation to new slot/subslot configuration
- b) Command to restart the interface received
- c) Command to reset the interface to the factory settings received

- 2) Event logbook:

Event logbook		06.08.2015 17:02:48	SIM
Cyclic measurment transfer is active		06.08.2015 17:02:22	
Restart of cyclic data exchange due to changed slot/subslot..		06.08.2015 17:01:05	

Figure 25: Display of the restart in the event logbook

An entry is only made in the event logbook if the restart was carried out due to an adaptation to a new slot/subslot configuration.



### 2.2.4.3 Display of the slot/subslot configuration in the device

In the main menu under **"Diagnostics / PROFINET"** the "Slot2: Universal inputs", "Slot3: Digital inputs" and "Slot4: Maths" submenus are displayed:

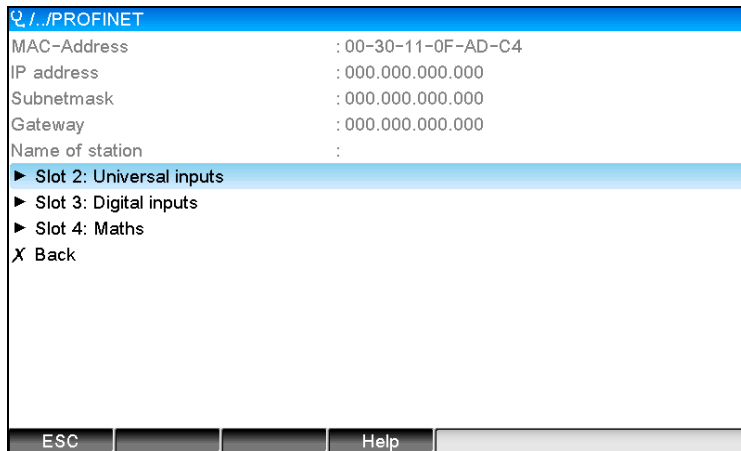


Figure 26: PROFINET configuration of the cyclic data transfer

These submenus show the currently used (cyclic data transfer active) or most recently saved (cyclic data transfer not active) configuration. The structure of the submenus is always the same and only differs in the number of subslots displayed, which corresponds to the number of inputs/channels.

- ⇒ "Slot 2: Universal inputs" submenu
  - Available universal inputs: 1-40
  - Displayed subslots: 1-40
- ⇒ "Slot 3: Digital inputs" submenu
  - Available digital inputs: 1-20
  - Displayed subslots: 1-20
- ⇒ "Slot 4: Maths" submenu
  - Available mathematics channels: 1-12
  - Displayed subslots: 1-12

The display is explained below on the basis of the mathematics channels:

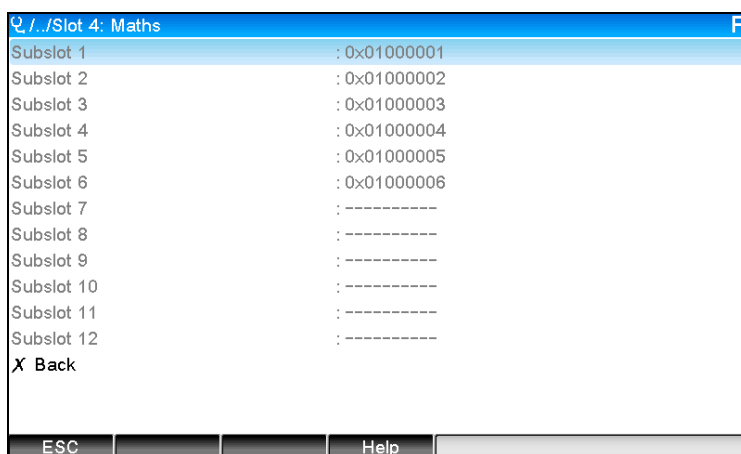


Figure 27: Display of the configuration of mathematics channels

As shown in the figure, the submenu is divided into two areas:

- Left: Specification of the subslot = number of the channel (in this case the mathematics channel)
- Right: Specification of the configured SubmodulIdentNumber. If "-----" is displayed instead of the SubmodulIdentNumber, this means that the subslot or the input/channel is not involved in the cyclic data transfer. During the cyclic data transfer, only values from the subslots or inputs/channels that have been configured with a corresponding SubmodulIdentNumber are received/sent.

## 2.2.5 Checking whether cyclic data transfer is active

You can check whether the device is performing a cyclic data exchange in the main menu under **"Diagnostics / Event logbook"**:

Event logbook		06.08.2015 17:30:54	SIM
	Cyclic measurement transfer is active	06.08.2015 17:30:40	
	No cyclic measurement transfer	06.08.2015 17:30:34	
	220000-003 Signal: Switched off	06.08.2015 17:30:24	

Figure 28: Device performing a cyclic data exchange

The message "Cyclic measurement transfer is active" is entered here when the device begins a cyclic data transfer with a PROFINET controller. If the cyclic data transfer is ended, the message "No cyclic measurement transfer" appears.

## 2.3 Acyclic data transfer

### 2.3.1 Transferring texts

Texts can be saved in the device's events list. The maximum length is 40 characters. If the text is longer than 40 characters, write access is blocked with an error message.

The texts must be written via **Slot 0->SubSlot 1->Index 1**.

Once the text has been successfully written, it is entered into the event logbook:

Event logbook		06.08.2015 17:05:24	SIM
	ABCD: Fieldbus (Remote)	06.08.2015 17:04:55	
	Cyclic measurement transfer is active	06.08.2015 17:04:48	

Figure 29: Entry of a text into the event logbook

The above figure shows that the text "ABCD" has been successfully written.

### 2.3.2 Batch data

Batches can be started and stopped. The batch name, batch designation, batch number and preset counter can also be configured for stopping the batch. The texts (ASCII) can have a maximum length of 30 characters. If the text is longer than 30 characters, write access is blocked with an error message.

The functions and parameters must be written via **Slot 0->SubSlot1->Index 2**:

Function	Description	Data
0x01	Start batch	Batch 1...4, ID, name
0x02	Stop batch	Batch 1...4, ID, name
0x03	Batch designation	Batch 1...4, text (max. 30 characters)
0x04	Batch name	Batch 1...4, text (max. 30 characters)
0x05	Batch number	Batch 1...4, text (max. 30 characters)
0x06	Preset counter	Batch 1...4, text (max. 8 characters)

### 2.3.2.1 Starting a batch

If the user administration function is enabled, an ID (max. 8 characters) and a name (max. 20 characters) must be transmitted, separated by a ','.

Example: Start batch 2

Byte	0	1
	Func	no.
	1	2

The entry "Batch 2 started" is saved in the event list. This message also appears on the screen for a few seconds.

### 2.3.2.2 Ending a batch

If the user administration function is enabled, an ID (max. 8 characters) and a name (max. 20 characters) must be transmitted, separated by a ','.

Example: End batch 2, user administration function enabled (ID: "IDSPS", Name "RemoteX")

Byte	0	1	2	3	4	5	6	7	8	9	10	11	12	13	14
	Func	no.	49	44	53	50	53	3B	52	65	6D	6F	74	65	58
	2	2	'I'	'D'	'S'	'P'	'S'	','	'R'	'e'	'm'	'o'	't'	'e'	'X'

The entry "Batch 2 terminated" and "Remote (IDSPS)" is saved in the event list. This message also appears on the screen for a few seconds.

### 2.3.2.3 Setting the batch designation

Can only be set if the batch has not yet been started. It does not have to be set if it is not required by the device settings (Direct access 490005).

Example: Batch designation "Identifier" for batch 2

Byte	0	1	2	3	4	5	6	7	8	9	10	11
	Func	no.	49	64	65	6E	74	69	66	69	65	72
	3	2	'I'	'd'	'e'	'n'	't'	'i'	'f'	'i'	'e'	'r'

### 2.3.2.4 Setting the batch name

Can only be set if the batch has not yet been started. It does not have to be set if it is not required by the device settings (Direct access 490006).

Example: Batch name "Name" for batch 2

Byte	0	1	2	3	4	5
	Func	no.	4E	61	6D	65
	4	2	'N'	'a'	'm'	'e'

### 2.3.2.5 Setting the batch number

Can only be set if the batch has not yet been started. It does not have to be set if it is not required by the device settings (Direct access 490007).

Example: Batch number "Num" for batch 2

Byte	0	1	2	3	4
	Func	no.	4E	75	6D
	5	2	'N'	'u'	'm'

### 2.3.2.6 Setting the preset counter

Can only be set if the batch has not yet been started. It does not have to be set if it is not required by the device settings (Direct access 490008).

- Maximum 8 characters (including ',', 'E', '-')
- Exponential function permitted; the permitted value range must not be exceeded, e.g. "1.23E-2" = 0.0123 decimal
- Only positive numbers
- Maximum value range: 0 - 99999999

Example: Preset counter to 12.34567 for batch 2

Byte	0	1	2	3	4	5	6	7	8	9
	Func	no.	31	32	2E	33	34	35	36	37
	6	2	'1'	'2'	','	'3'	'4'	'5'	','6'	','7'

### 2.3.2.7 Reading out the batch status

This can be used to read out the status of every batch and the last communication status. 6 bytes must be read out via **Slot 0->SubSlot 1-> Index 2**.

Example: Batch 2 started, communication status "OK"

Byte	0	1	2	3	4	5
		Comm. Status	Status batch 1	Status batch 2	Status batch 3	Status batch 4
	0	0	0	1	0	0

If, for example, a batch number is set even though the batch is already running, byte 1 would have the value 0x03.

Communication status:

- 0: OK
- 1: Not all the necessary data were transmitted (mandatory entries)
- 2: User responsible not logged on
- 3: Batch already running
- 4: Batch not configured
- 5: Batch controlled via control input
- 7: Automatic batch number active
- 9: Error, text contained characters that cannot be displayed, text too long, incorrect batch number, Function number out of range

### 2.3.3 Relays

Relays can be set if they were set to "Remote" in the device settings. Parameters must be written via **Slot 0->SubSlot 1->Index 3**.

#### 2.3.3.1 Setting relays

Example: Setting relay 6 to the active state

Byte	0	1
	RelNo	Status
	6	1

#### 2.3.3.2 Reading out the relay status

This reads out the status of every relay. Bit 0 corresponds to relay 1. 2 bytes must be read out via **Slot 0->SubSlot 1-> Index 3**.

Example: Relay 1 and relay 6 in an active state

Byte	0	1
	Relays 12-9 (hex)	Relays 1-8 (hex)
	0	0x21

### 2.3.4 Changing limit values

Limit values can be changed. The functions and parameters must be written via **Slot 0->SubSlot1-> Index 4**.

Function	Description	Data
1	Initialization	
2	Accept limit values	
3	Change limit value	Limit value number, value [;dt]
5	Specify reason	Text specifying the reason

The following procedure must be followed to change limit values:

1. Initialize change to limit values
2. Change limit values
3. Specify reason for the change
4. Accept limit values

The changes since the last initialization can be discarded with a new initialization.

#### 2.3.4.1 Initializing a change to limit values

This prepares the device for changes to the limit values.

Byte	0	1
	Func	Fill byte
	1	2A

### 2.3.4.2 Changing limit values

Here, a limit value in the device is changed but is not yet accepted.

Examples:

Func	Limit value	Data	Meaning
3	1	5.22;;60	Limit value 1 to 5.22, no span, 60 s delay
3	2	5.34	Limit value 2 to 5.34
3	3	::10	Limit value 3, delay to 10 seconds
3	4	20;;;50	Limit value 4, in/outband lower limit value 20, upper limit value 50

Example: Changing limit value 1 (upper limit value for universal input) to 90.5

Byte	0	1	2	3	4	5
	Func	Limit value	39	30	2E	35
	3	1	'9'	'0'	','	'5'

Example: Changing limit value 3 (gradient for universal input) to 5.7 within 10 seconds

Byte	0	1	2	3	4	5	6	7	8
	Func	Limit value	35	2E	37	3B	3B	31	30
	3	3	'5'	','	'7'	','	','	'1'	'0'

### 2.3.4.3 Specifying a reason for changing the limit values

Before saving the change to limit values, a reason can be specified and saved in the events list. If no reason is specified, the "Limit values have been changed" entry is made in the events list.

Texts (as per ASCII table) can be transferred. The maximum length is 30 characters. If the text is longer than 30 characters, write access is blocked with an error message

Byte	0	1	2..n
	Func	Fill byte	Text
	5	2A	

### 2.3.4.4 Accept limit values

Here, the modified limit values are accepted in the device and stored in the device settings.

Byte	0	1
	Func	Fill byte
	2	2A

### 2.3.4.5 Reading out the execution status

This can be used to read out the status of the last limit value function performed.

1 byte must be read out via **Slot 0->SubSlot 1->Index 4**.

Example: Incorrect function addressed

Byte	0
	Comm. Status
	1

Communication status:

- 0: OK
- 1: Incorrect function number or limit value number
- 2: Missing data
- 3: Limit value not active
- 4: Gradient → two values
- 5: Function currently not possible
- 9: Error

## 3 PROFINET troubleshooting

- Is a PROFINET module installed?
- Is the Ethernet connection between the device and the controller OK?
- Is the correct GSD file being used?
- Are the "Slots" and "Subslots" configured correctly?

## 4 List of abbreviations/glossary of terms

**PROFINET module:** The PROFINET plug-in module, which is plugged into the rear of the device.

**PROFINET controller:** All equipment such as PLC, PC plug-in cards that perform a PROFINET controller function.

