

Safety Instructions

Memocheck CYP02E

Supplement to BA02017C

Safety instructions for electrical apparatus in explosion-hazardous areas



Memocheck CYP02E

Supplement to BA02017C

Table of contents

Associated documentation	4
Supplementary documentation	4
Certificates	4
Identification	4
Safety instructions	4
Temperature tables	5
Connection	5
Installation conditions	5

Associated documentation This document is an integral part of Operating Instructions BA02017C.

Supplementary documentation



- Competence Brochure CP00021Z
- Explosion Protection: Guidelines and General Principles
 - www.endress.com

Certificates

CSA C/US certificate, certificate number: CSA20CA80021490

Identification

The nameplate provides you with the following information on your device:

- Manufacturer identification
- Order code
- Extended order code
- Serial number
- Safety information and warnings
- Ex marking on hazardous area versions

► Compare the information on the nameplate with the order.

Type code

Type	Version				
CYP02E-	CI 8I	*	**	***	+*
	CSA C/US IS Cl. I Div. 1 GP A-D T6 + CSA C/US IS Cl. I Zone 0 AEx ia IIC T6	No Ex relevance			

Certificates and approvals

Hazardous area approval

CSA C/US IS Cl. I Div. 1 GP A-D T6

CSA C/US IS Cl. I Zone 0 AEx ia IIC T6

The product meets the requirements of:

- CLASS - C225804 - PROCESS CONTROL EQUIPMENT - Intrinsically Safe Entity - For Hazardous Locations
- CLASS - C225884 - PROCESS CONTROL EQUIPMENT - Intrinsically Safe Entity - For Hazardous Locations - Certified to US Standards



This is verified by compliance with the following standards:

- CAN/CSA-C22.2 No. 60079-0:19
- CAN/CSA-C22.2 No. 60079-11:14
- ANSI/UL 60079-0:19
- ANSI/UL 60079-11:13
- CAN/CSA-C22.2 No. 61010-1-12 (May 2012)
- UL Std. No. 61010-1 (3rd Edition)

Safety instructions

The Memocheck CYP02E inductive sensor simulator is suitable for use in explosion-hazardous areas according to:

- CSA C/US certificate CSA20CA80021490
- The Memocheck CYP02E sensor simulator must not be operated under electrostatically critical process conditions. Avoid strong steam or dust currents that act directly on the connection system.
- Ex-protected digital sensor simulators with Memosens technology are identified by an orange-red ring on the terminal head.
- Install the device according to the National Electrical Code (NFPA70) or the Canadian Electrical Code, Part 1 (C22.1), where applicable.

- The procedures for electrical connection described in the Operating Instructions must be followed.
- The Memocheck CYP02E sensor simulator is not suitable for use directly in the process.
- The device must be installed as specified in Control Drawing 211038777. →  1,  6

Temperature tables

Sensor	Temperature class	Process temperature T_p	Ambient temperature T_a
CYP02E	T6	Memocheck CYP02E is not suitable for use directly in the process	$-15\text{ °C} \leq T_a \leq +70\text{ °C}$

Connection

Ex specification

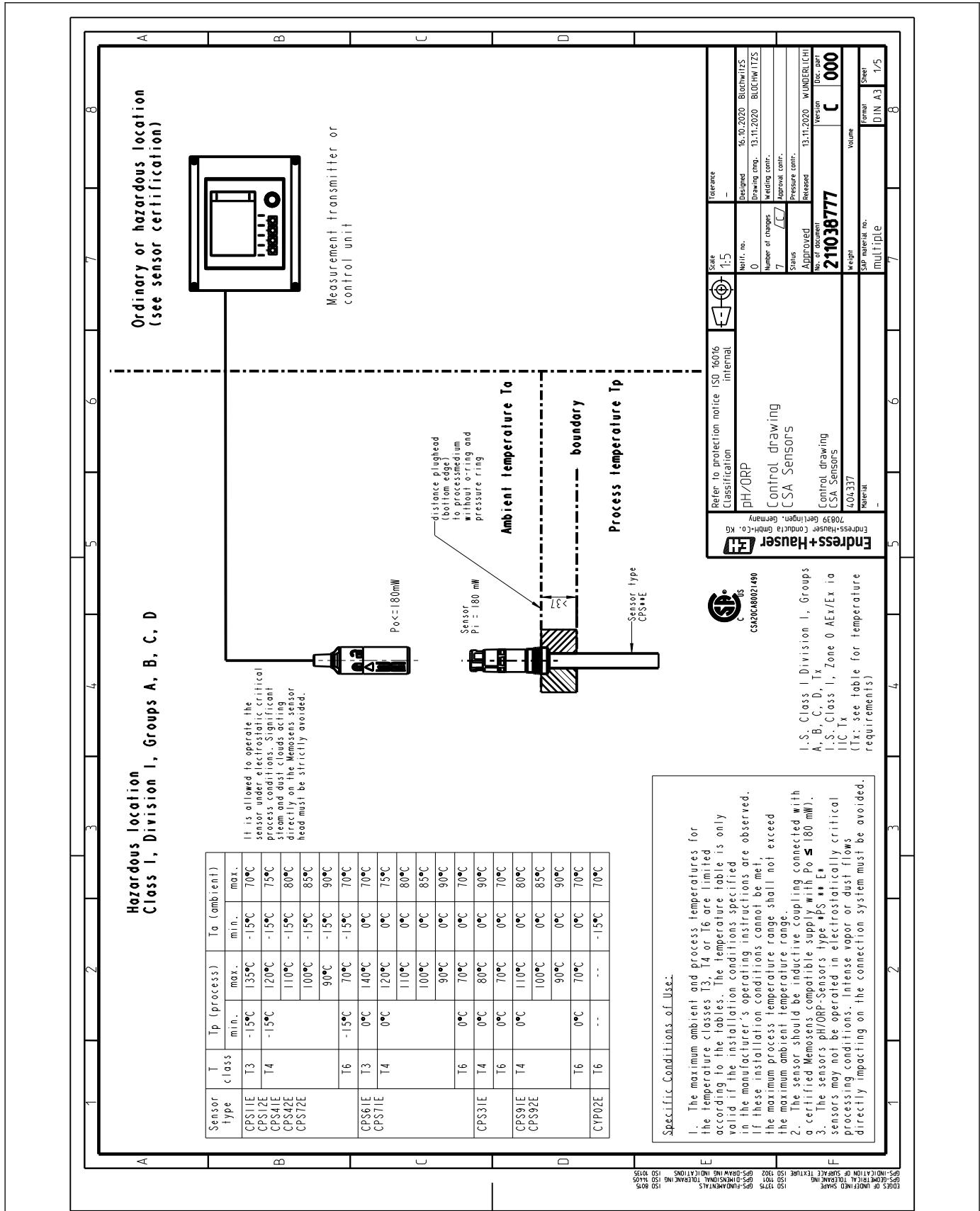
- The Memocheck sensor simulators, type series CYP02E, are approved according to the CSA20CA80021490 and are suitable for use in explosion-hazardous environments.
- The approved CYP02E-type Memocheck sensor simulators have an intrinsically safe input with the following parameter set:

Parameter	Value
P_i	180 mW

The approved CYP02E-type Memocheck sensor simulators must be connected to a Memosens measuring cable with an intrinsically safe output with the following parameter set:

Parameter	Value
P_o	Maximum 180 mW

Installation conditions



1 Control Drawing 211038777



www.addresses.endress.com
