

Float Tank Gauge LTC-2230/2240

Level measurement for small-sized
and underground tanks



Introduction

LTC-2000 series is a float type gauge used for stock control, measuring liquid level of a small-sized tank and underground tank. Since the gauge head and component parts are composed of relatively simple construction and small size, the tank gauge can be easily installed and maintained with less troubles. Model LTC-2230 (with indicator facing 45° upwards) and Model LTC-2240 (with indicator facing 45° downwards) are specially designed for use in underground tanks or concentrated tank farms. Remote tank gauging or alarm contact signal transmission is possible by mounting the transmitter made by Sakura Endress to the LTC2230-2240 tank gauges.

Features

- Low cost
- Manual gauging on tank top is unnecessary - assures safe maintenance
- Large dial scale makes indicator reading easy even from a distance
- Remote tank gauging is easily done
- Applicable to corrosive or high viscous liquid by selecting adequate material and component parts of tank gauge
- Applicable even to stirring tanks by furnishing stilling well in tanks

Endress + Hauser

The Power of Know How



Specification

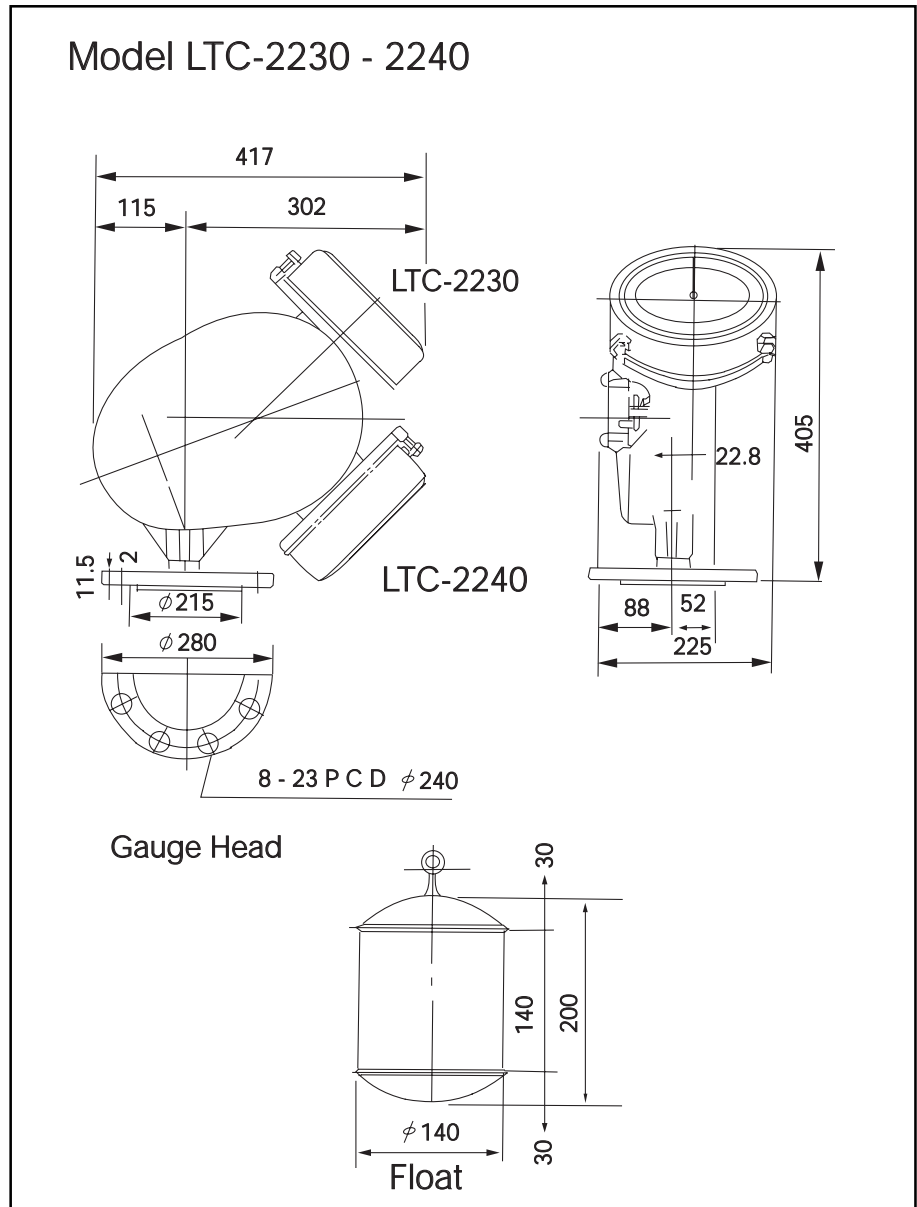
Measuring range:	0 ~ 2.5m., 5m	Total weight:	LTC 2230 - approx. 8 kg LTC 2240 - approx. 8 kg
Indication system:	One pointer-dial type (min. div. 20mm)	Material:	See "Standard mounting"
Accuracy:	± 30mm (ρ = 1.0)	Body color:	Metallic Silver
Working pressure:	Max. 0.2 kgf/cm ² (19.014 kPa)	Connections:	See "Outline drawing"
Specific gravity range of measuring liquid:	0.5 ~ 2.0	Protection Class	IP55

Operating principle

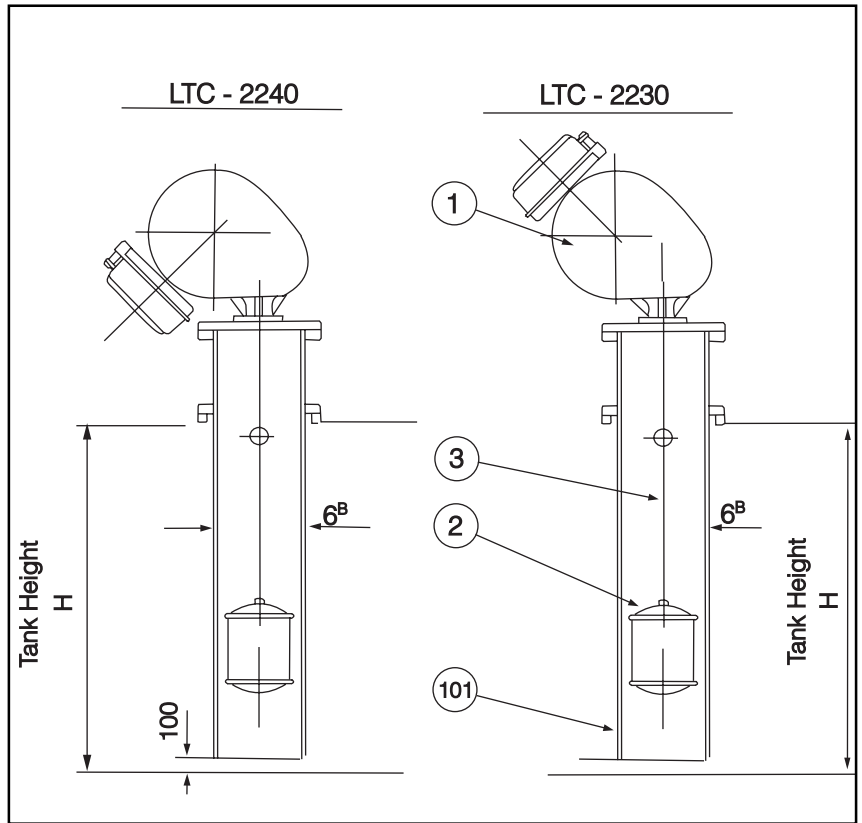
Tank gauge is composed of detector (float), motion-transmission medium (Measuring wire) and indicator unit. The measuring wire (twisted) connected to the float on a liquid level is directly led into the gauge head and wound on wire drum. The rotation of the wire drum is transmitted through gear trains to the

scale dial indicator where pointer turns on the dial scale to indicate the level. The wire drum is connected to constar drum which serves to wind excessive length of the wire caused by level variation. Thus, the wire tension is kept always constant.

Dimensions



Standard Mounting



Items prepared by a user:

No.	Parts Name	Quantity	Material
101	Float chamber	1	Steel

Items supplied by Sakura Endress:

No.	Parts Name	Quantity	Material
1	Gauge head	1	Housing: AC4A/SS400 Internal: Bakelite
2	Float	1	SUS316
3	Measuring wire	2	SUS316

Product Structure

MECHANICAL LEVEL GAUGE LTC-2230

Function

- 0 Standard
- 9 Special version

Process connection

- 0 Flange JIS 10K 150A RF, steel
- 1 Flange ANSI 6" 150lbs RF
- 9 Special version

Measuring range

- 1 2.5m
- 2 5m
- 3 10m
- 9 Special version

Display

- 1 Dial 1 pointer
- 9 Special version

Application (KIT Code)

- 000 Gauge head only
- 081 Standard
- 999 Special version

Float type

- 1 2.1kg, Dia. 140 mm
- 2 2.4kg, Dia. 140 mm
- 3 Without float
- 9 Special version

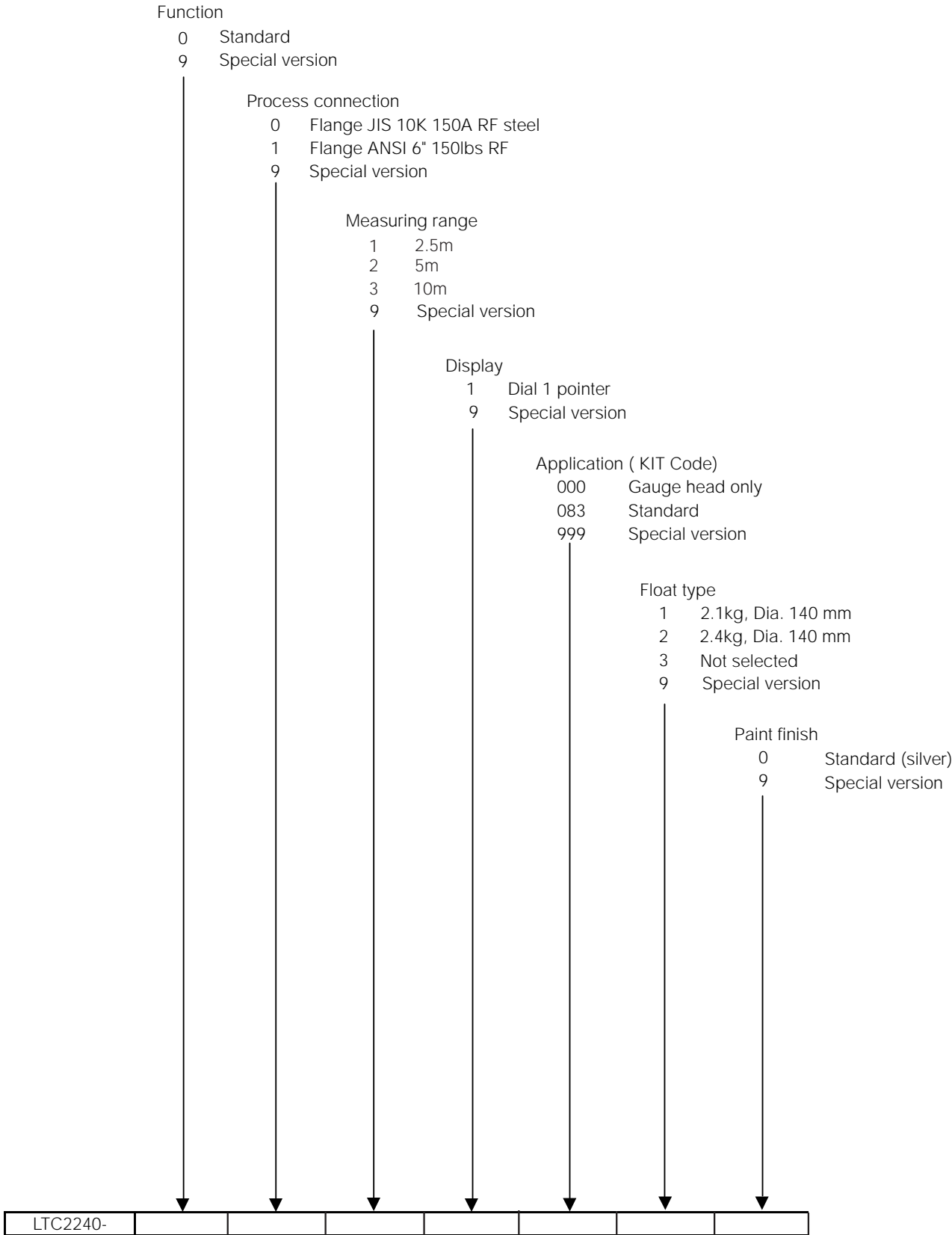
Paint finish

- 0 Silver
- 9 Special version



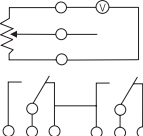
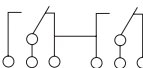
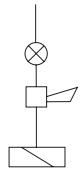
Ptproduct Structure (cont.)

MECHANICAL LEVEL GAUGE LTC-2240



Remote Gauging Equipment



Analogue Transmitter 	AT-1000 Series - Potentionmeter Type	
	<p>AT-1000 series is connected with the LTC series gauge head. It converts the reading into the electrical signal such as current, voltage and resistance. It could also provide alarm contacts up to 6 points</p> <div style="display: flex; align-items: center;">  <div style="margin-left: 10px;"> <p>0 ~ 500Ω, 4 ~ 20mA 0 ~ 10mV, 0 ~ 1 mA 0 ~ 1V, 0 ~ 20mA</p> <p>Alarm Contact available up to 6 points</p> </div> </div>	
	AT-5000 Series - Alarm Transmitter	
	<p>AT-5000 series is connected with the LTC series gauge head to provide alarm contacts up to 6 points for control of pump, valve, and the likes.</p> <div style="display: flex; align-items: center;">  <div style="margin-left: 10px;"> <p>Alarm Contact available up to 6 points</p> </div> </div>	

Endress+Hauser Yamanashi Co.,Ltd.

862-1 Mitsukunugi,
 Sakaigawa-cho,
 Fuefuki-shi, Yamanashiken
 406-0846 Japan

Phone: ++81-55-266-4964
 Fax: ++81-55-266-4969
<http://www.endress.com>

Endress + Hauser

The Power of Know How

