

Installation Instructions

Spare parts kits for Cleanfit CPA472D, CPA473 and CPA474 process retractable assemblies

Seals, not in contact with medium



Table of contents

1 Intended use 3

2 Personnel authorized to carry out conversion 3

3 Safety instructions 3

4 Scope of delivery 4

5 Additional documentation 9

6 Replacing seals 9

7 Disposal 9

1 Intended use

- The parts in the kits must only be used as maintenance parts for the CPA472D, CPA473 and CPA474 process retractable assemblies. Any other use is not permitted!
- Use only original parts from Endress+Hauser.
- In the W@M Device Viewer, check if the spare part is suitable for the existing device.

2 Personnel authorized to carry out conversion

- Installation, commissioning, operation and maintenance of the measuring system may be carried out only by specially trained technical personnel.
- The technical personnel must be authorized by the plant operator to perform the stated tasks.
- The electrical connection may only be established by an electrical technician.
- The technical personnel must have read and understood these Installation Instructions and must follow the instructions they contain.
- Measuring point faults may be repaired only by authorized and specially trained personnel.



Repairs not described in the Operating Instructions provided must only be carried out directly at the manufacturer's site or by the service organization.

3 Safety instructions

WARNING

Risk of injury from high pressure, high temperature or chemical hazards if process medium escapes!

- ▶ Before installing or removing an assembly, depressurize the system, drain the system and clean it.

CAUTION

Risk to health due to contact with the process medium

- ▶ Wear protective gloves, protective goggles and protective clothing, particularly when working with reagents, chemicals or process solutions.
- ▶ In case of contact with eyes or skin, rinse the affected area with plenty of water and then seek medical advice. Show the relevant safety data sheet to the physician.

NOTICE**Material damage due to solvents!**

- ▶ Do not use any halogen-containing organic solvents or acetone. These solvents could destroy plastic components of the assembly.

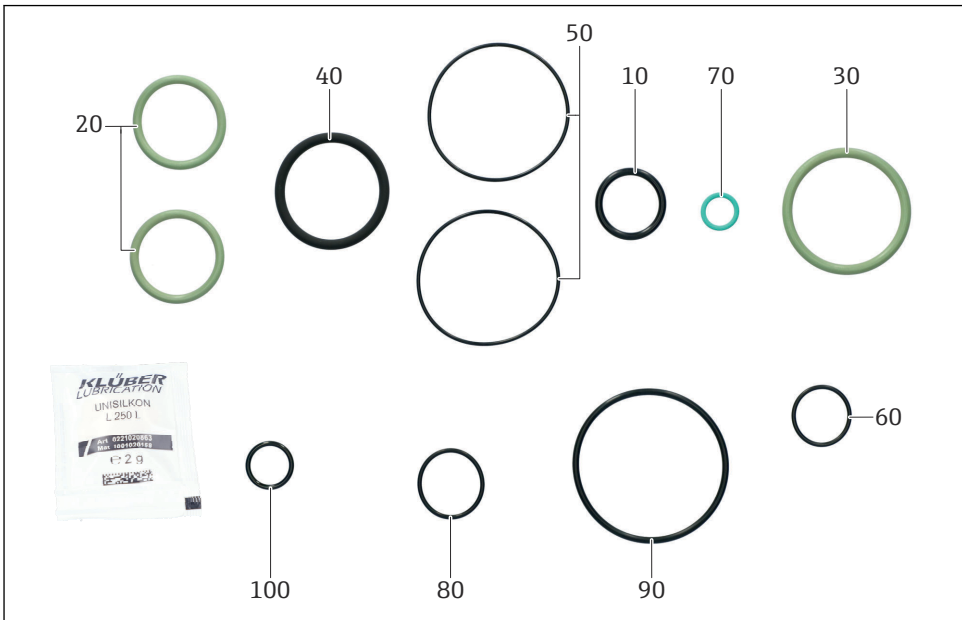
i Potential impact on the process

Before decommissioning an active device, the potential impact on the overall process must be taken into account! This applies in particular when using the associated measuring instrument to control process variables.

4 Scope of delivery

4.1 71064624 CPA471...5 seals without medium contact









i The kit applies to the following assemblies: CPA472D, CPA473, CPA474

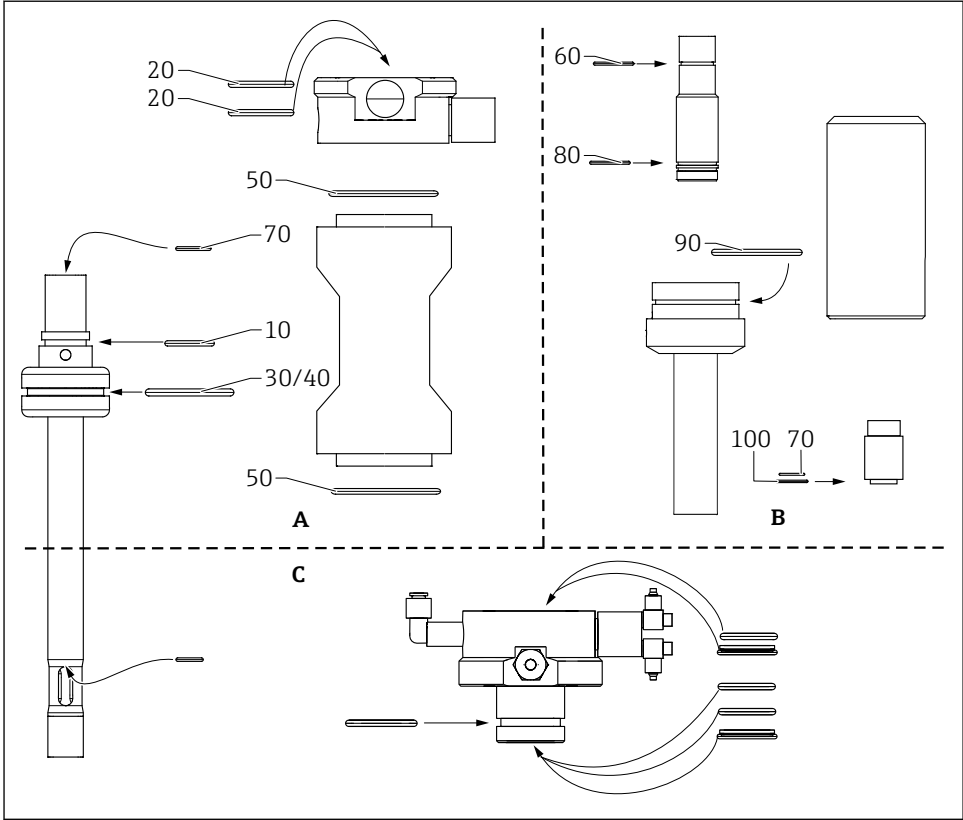


A0057583

i 1 CPA47x seals, not in contact with medium

The kit contains the following parts :

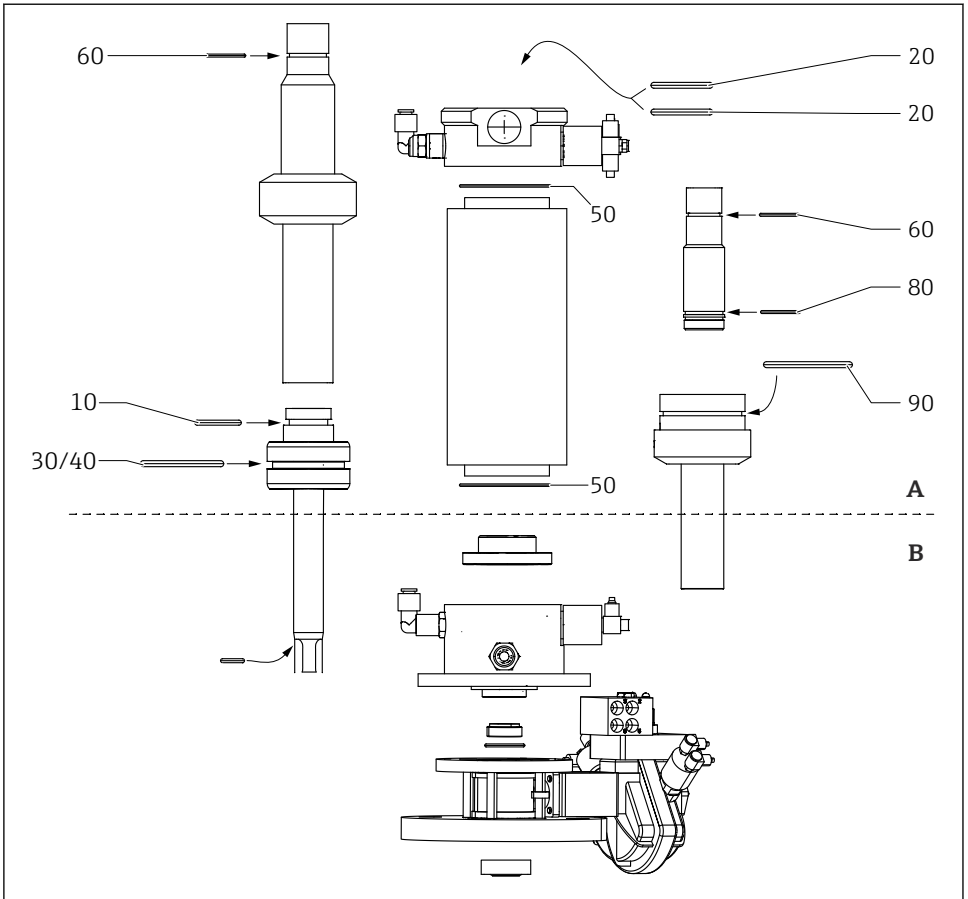
Kit no.	Quantity	Kit item no. →  1,  4 →  2,  6 →  3,  7 →  4,  8	Size	Remarks/material
71064624	1	10	O-ring ID 22.00 W 3.00 OD 28.00 EPDM	
	2	20	O-ring ID 30.00 W 3.50 OD 37.00 FPM	2 x for pneumatic assembly 1 x for manual assembly
	1	30	O-ring ID 42.00 W 4.00 OD 50.00 FPM	Only for pneumatic assembly
	1	40	O-ring ID 37.00 W 4.00 OD 45.00 FPM	Only for manual assembly
	2	50	O-ring ID 52.00 W 1.50 OD 55.00 EPDM	
	1	60	O-ring ID 20.35 W 1.78 OD 24.09 EPDM	
	1	70	O-ring ID 11.00 W 2.00 OD 15.00 FPM	Only for CPA472D Version for gel sensors, item 70 (illustration A) Version for liquid KCl sensors, item 70 (illustration B)
	1	80	O-ring ID 23.52 W 1.78 OD 27.06 EPDM	Only for KCl version
	1	90	O-ring ID 55.25 W 2.62 OD 60.49 EPDM	Only for KCl version
	1	100	O-ring ID 15.00 W 2.00 OD 19.00 EPDM	Only for CPA472D, only for KCl version
	1		Klüber UNISILKON L 2 g lubricating grease	
	1		Kit instructions	



A0057482

2 Installation positions of non-wetted seals (CPA472D assembly)

- A Seals, not in contact with medium
- B Seals for KCl version
- C Seals, in contact with medium

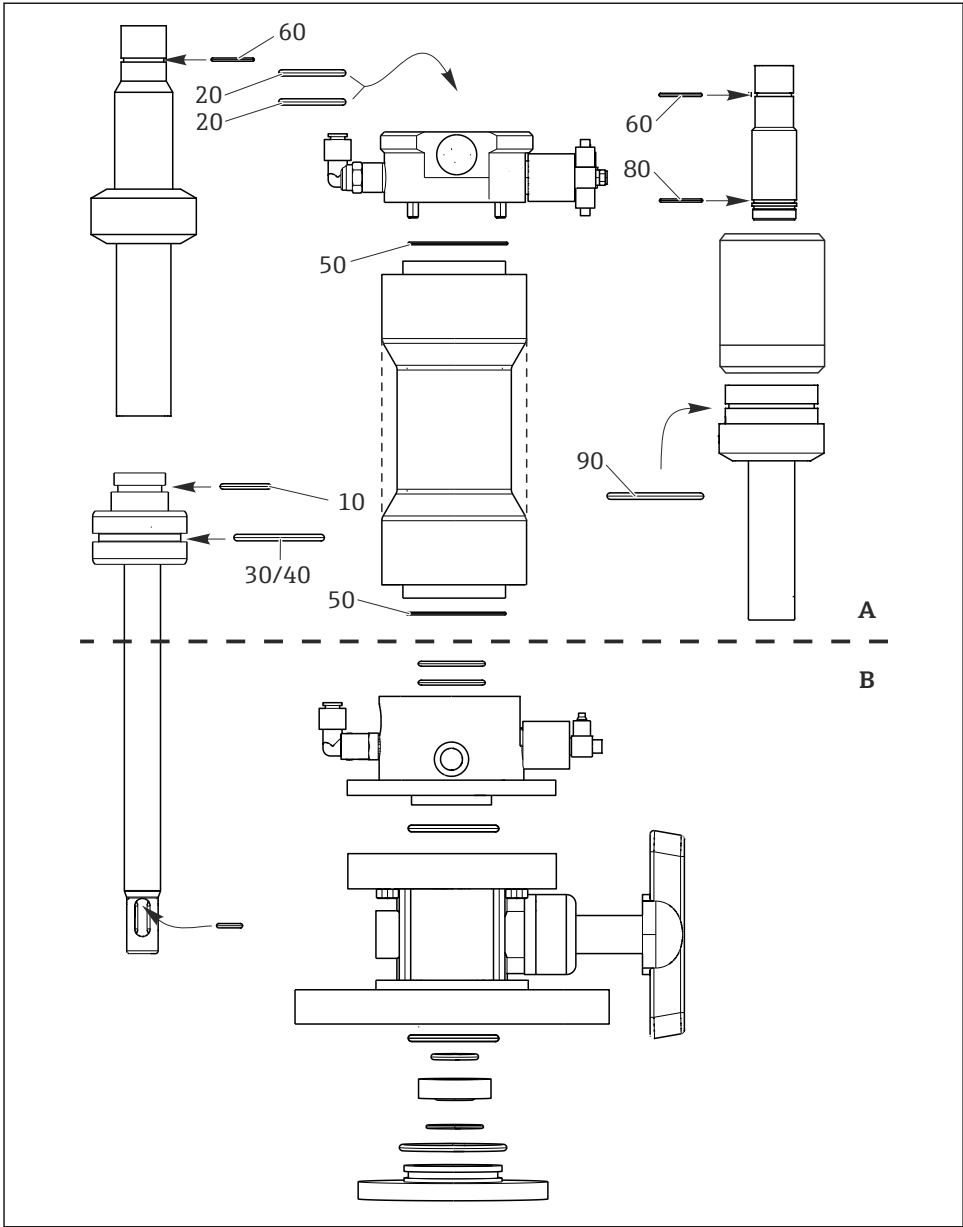


A0057483

3 Installation positions of non-wetted seals (CPA473 assembly)

A Seals, not in contact with medium

B Seals, in contact with medium



A0057470

4 Installation positions of non-wetted seals (CPA474 assembly)

- A Seals, not in contact with medium
- B Seals, in contact with medium

5 Additional documentation

Detailed information on the device can be found in the Operating Instructions for the specific assembly and in the other documentation available via:

- www.endress.com/device-viewer
- Smartphone/tablet: Endress+Hauser Operations app

6 Replacing seals



The procedures for replacing the seals are described in the following documents:

- For CPA472D assembly: Operating Instructions BA00403C/07/xx
- For CPA473 assembly: Operating Instructions BA344C/07/xx
- For CPA474 assembly: Operating Instructions BA345C/07/xx

7 Disposal

- ▶ Please observe local regulations!



71695487

www.addresses.endress.com
