

Installation Instructions

Spare parts kits for Cleanfit CPA473 process retractable assemblies

Seals, in contact with medium



Table of contents

1 Spare parts kit 3

2 Intended use 3

3 Personnel authorized to carry out conversion 3

4 Safety instructions 4

5 Scope of delivery 5

6 Additional documentation 8

7 Replacing seals 9

8 Disposal 11

1 Spare parts kit

These installation instructions apply to the following spare parts kits:


No.	Description	Section
71065927	Seals for wetted parts, EPDM	→ 5
71065929	Seals for wetted parts, FPM	
71065930	Seals for wetted parts, FFKM	
71065932	Ball valve scraper, EPDM	
71065933	Ball valve scraper, FPM	
71065934	Ball valve scraper, FFKM	
71065935	Seal bushing with Variseal, EPDM	
71065937	Seal bushing with Variseal, FPM	
71065938	Seal bushing with Variseal, FFKM	

2 Intended use

- The parts of the kits must only be used as maintenance parts for the CPA473 process retractable assembly. Any other use is not permitted!
- Use only original parts from Endress+Hauser.
- In the W@M Device Viewer, check if the spare part is suitable for the existing device.

3 Personnel authorized to carry out conversion

- Installation, commissioning, operation and maintenance of the measuring system may be carried out only by specially trained technical personnel.
- The technical personnel must be authorized by the plant operator to perform the stated tasks.
- The electrical connection may only be established by an electrical technician.
- The technical personnel must have read and understood these Installation Instructions and must follow the instructions they contain.
- Measuring point faults may be repaired only by authorized and specially trained personnel.

 Repairs not described in the Operating Instructions provided must only be carried out directly at the manufacturer's site or by the service organization.

4 Safety instructions

WARNING

Risk of injury from high pressure, high temperature or chemical hazards if process medium escapes!

- ▶ Before installing or removing an assembly, depressurize the system, drain the system and clean it.

CAUTION

Risk to health due to contact with the process medium

- ▶ Wear protective gloves, protective goggles and protective clothing, particularly when working with reagents, chemicals or process solutions.
- ▶ In case of contact with eyes or skin, rinse the affected area with plenty of water and then seek medical advice. Show the relevant safety data sheet to the physician.

NOTICE

Material damage due to solvents!

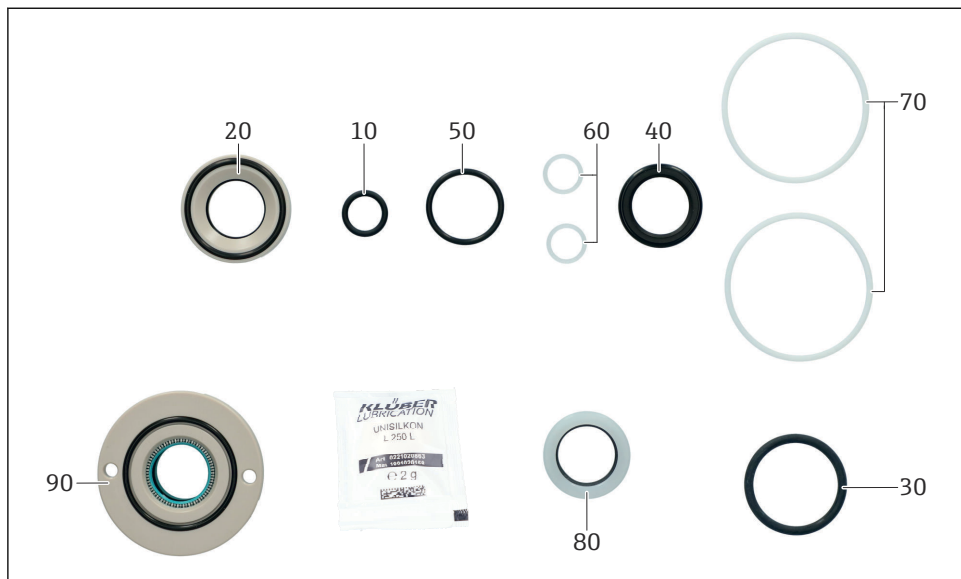
- ▶ Do not use any halogen-containing organic solvents or acetone. These solvents could destroy plastic components of the assembly.



Potential impact on the process

Before decommissioning an active device, the potential impact on the overall process must be taken into account! This applies in particular when using the associated measuring instrument to control process variables.

5 Scope of delivery

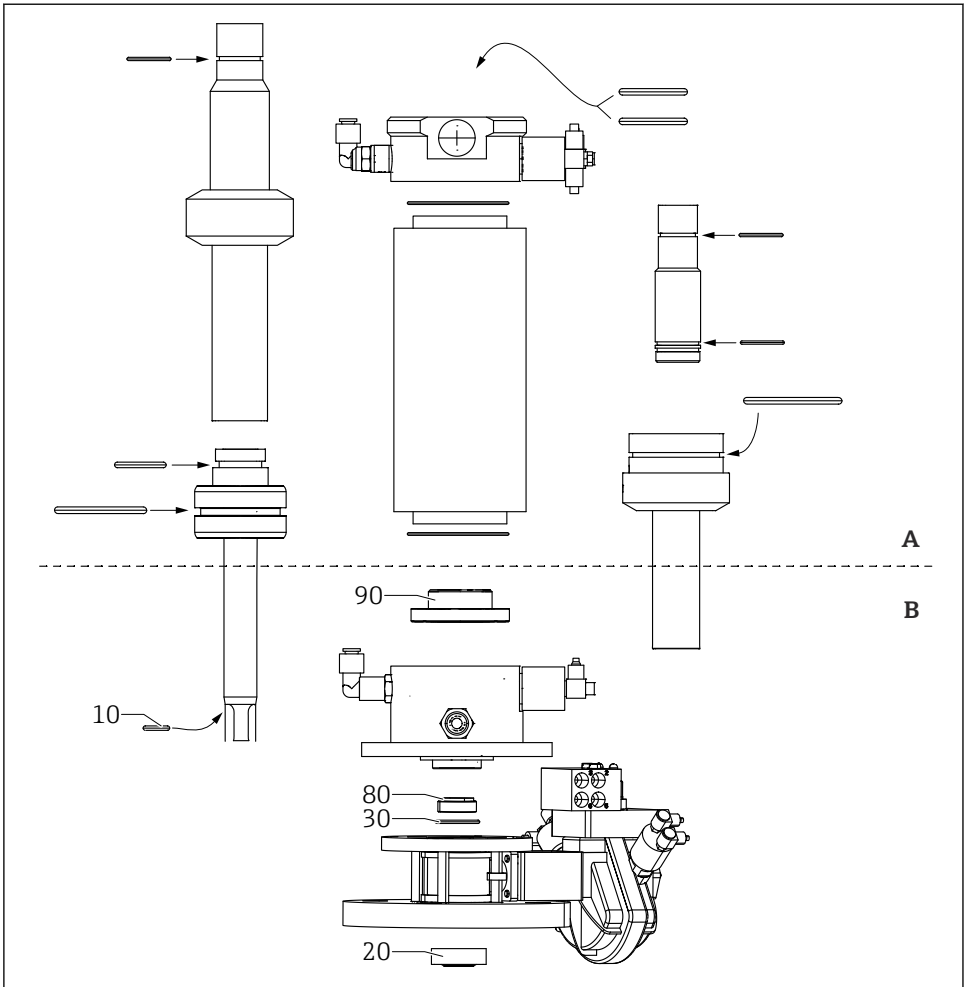


A0057572

1 CPA473 seals for wetted parts, EPDM/FPM/FFKM

Kit no.	Quantity	Kit item no.	Size	Remarks/material
71065927 (EPDM)	1	10	O-ring ID 11.00 W 2.00 OD 15.00	EPDM, FPM or FFKM
71065929 (FPM)	1	20	PEEK scraper	The scraper contains: <ul style="list-style-type: none"> 1 x O-ring ID 19.00 W 3.00 OD 25.00 (EPDM, FPM or FFKM) 2 x O-ring ID 28.00 W 2.00 OD 32.00 (EPDM, FPM or FFKM)
71065930 (FFKM)	1	30	O-ring ID 27.00 W 3.00 OD 33.00	EPDM, FPM or FFKM
	1	40	Scraper ID 19 mm	EPDM, FPM or FFKM
	1	50	O-ring ID 21.00 W 2.00 OD 25.00	EPDM, FPM or FFKM
	2	60	Sealing ring G1/8 PVDF	
	2	70	Housing seal for ball valve, PTFE	
	1	80	Scraper bushing with scraper Turcon Excluder2, ID 19 mm	

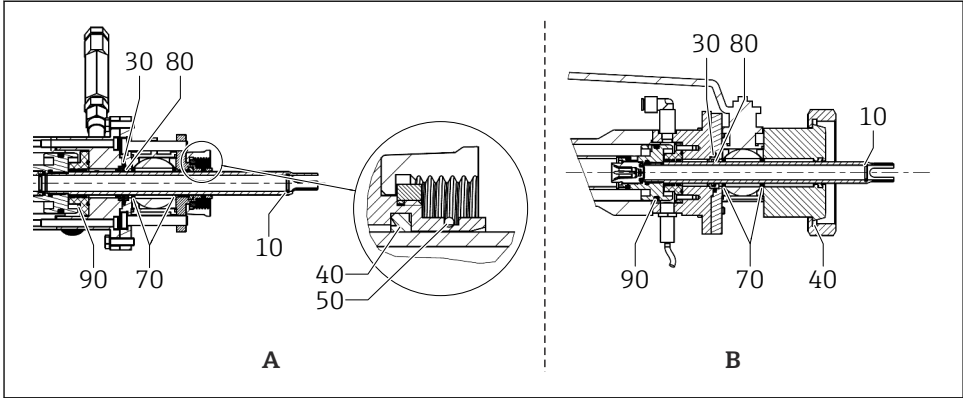
Kit no.	Quantity	Kit item no.	Size	Remarks/material
	1	90	Seal bushing with Variseal, CPA473	The seal bushing contains: <ul style="list-style-type: none"> ▪ 2 x molded seals Turcon Variseal 19x23.5x3.6 ▪ 1 x O-ring ID 33.05 W 1.78 OD 36.61 (EPDM, FPM or FFKM) ▪ 1 x O-ring ID 18.72 W 2.62 OD 23.96 (EPDM, FPM or FFKM) ▪ 2 x countersunk head screw M4x16 DIN965 A2
71065932 (EPDM) 71065933 (FPM) 71065934 (FFKM)	1	20	PEEK scraper	The scraper contains: <ul style="list-style-type: none"> ▪ 1 x O-ring ID 19.00 W 3.00 OD 25.00 (EPDM, FPM or FFKM) ▪ 2 x O-ring ID 28.00 W 2.00 OD 32.00 (EPDM, FPM or FFKM)
	1	40	Scraper ID 19 mm	EPDM, FPM or FFKM
	1	80	Scraper bushing with scraper Turcon Excluder2, ID 19 mm	
71065935 (EPDM) 71065937 (FPM) 71065938 (FFKM)	1	90	Seal bushing with Variseal, CPA473	The seal bushing contains: <ul style="list-style-type: none"> ▪ 2 x molded seals Turcon Variseal 19x23.5x3.6 ▪ 1 x O-ring ID 33.05 W 1.78 OD 36.61 (EPDM, FPM or FFKM) ▪ 1 x O-ring ID 18.72 W 2.62 OD 23.96 (EPDM, FPM or FFKM) ▪ 2 x countersunk head screw M4x16 DIN965 A2
All kits include a 2 g sachet of Klüber UNISILKON L and kit instructions.				



A0057573

2 Installation positions of seals for wetted parts

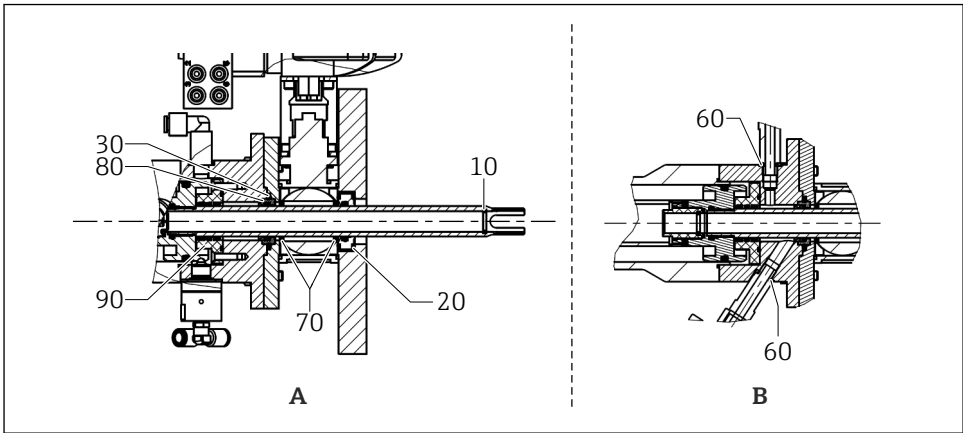
- A Seals, not in contact with medium
- B Seals, in contact with medium



A0057574

3 Installation positions

- A Seals at process connection G 1 ¼" internal
- B Seals at the process connection dairy fitting DN65



A0057575

4 Installation positions

- A Seals at the process connection flange
- B Seals at the rinse connections

6 Additional documentation

Detailed information on the device can be found in the Operating Instructions for the specific assembly and in the other documentation available via:

- www.endress.com/device-viewer
- Smartphone/tablet: Endress+Hauser Operations app


7 Replacing seals

To replace the wetted seals of the assembly, the process must be stopped, and the assembly must be completely removed as described below (see also Operating Instructions BA344C/07/xx).

WARNING

Risk of injury from high pressure, high temperature or chemical hazards if process medium escapes!

- ▶ Before installing or removing an assembly, depressurize the system, drain the system and clean it.
- ▶ Wear protective goggles and safety gloves.

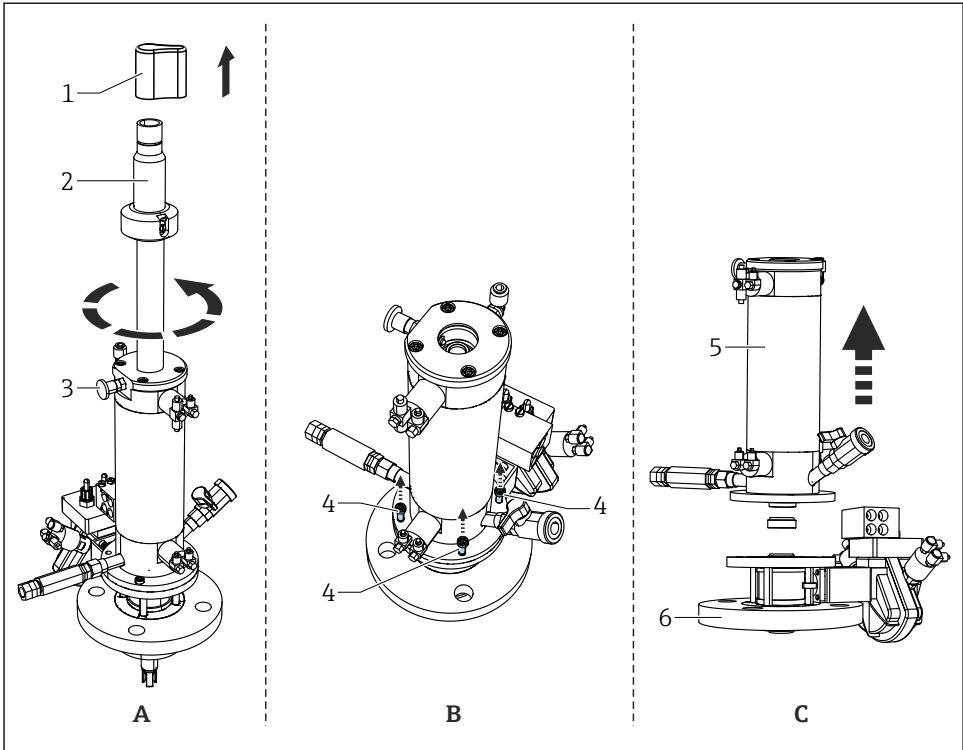
 The wetted seals must be inspected at least every 6 months and replaced if necessary.

Preparatory steps:

1. Interrupt the process. Pay attention to residual medium, residual pressure as well as elevated temperatures.
2. Move the assembly to the service position and secure this position with the stop lock bolt.
3. Remove the sensor.
4. Completely detach the assembly from the process connection.
5. Clean the assembly (see the "Cleaning the assembly" section in the Operating Instructions).

Detaching the assembly (illustration with retraction pipe for gel electrodes (stainless steel cylinder version)):

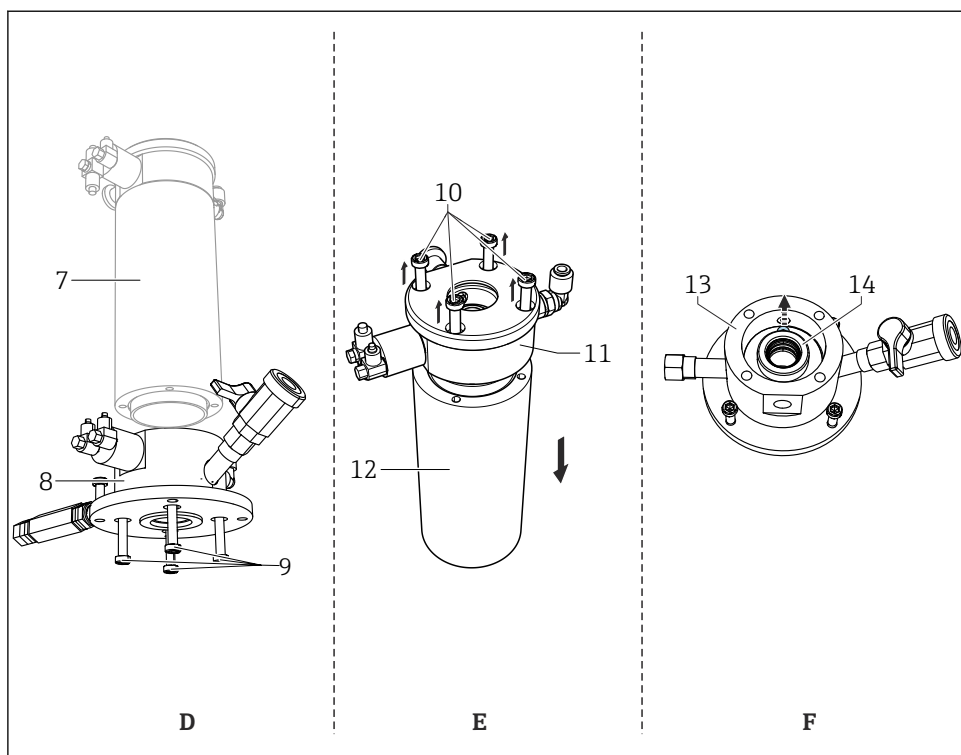
1. Remove the splash protection cap (1).
2. Ensure that the stop lock bolt (3) is engaged.
3. Unscrew the retraction pipe (2) (for KCl electrodes, the retraction pipe remains in place).
4. Loosen the four connecting screws (4) on the top of the flange.
5. Remove the pressure cylinder with the rinse chamber (5) from the ball valve (6).



A0057576

5 Disassembly, part 1 (A), part 2 (B) and part 3 (C)

6. Loosen the four connecting screws (9) on the underside of the rinse chamber (8).
7. Remove the rinse chamber (8) from the pressure cylinder with the cylinder head (7).
8. Loosen the four connecting screws (10) on the cylinder head (11).
9. Remove the cylinder head from the pressure cylinder (12).
10. Loosen the two securing screws on the seal bushing (14) and remove the seal bushing from the flushing housing (13).



A0057577

6 Disassembly, part 4 (D), part 5 (E) and part 6 (F)

Replacing seals

1. Apply a thin layer of lubricant (e.g. Klüber UNISILKON L) to the new seals.
2. Replace the wetted seals.
3. Reassemble the assembly.

8 Disposal

- ▶ Please observe local regulations!



71695486

www.addresses.endress.com
