



# Special Documentation

## FHG51-B#1

### Clamping device for density measurement

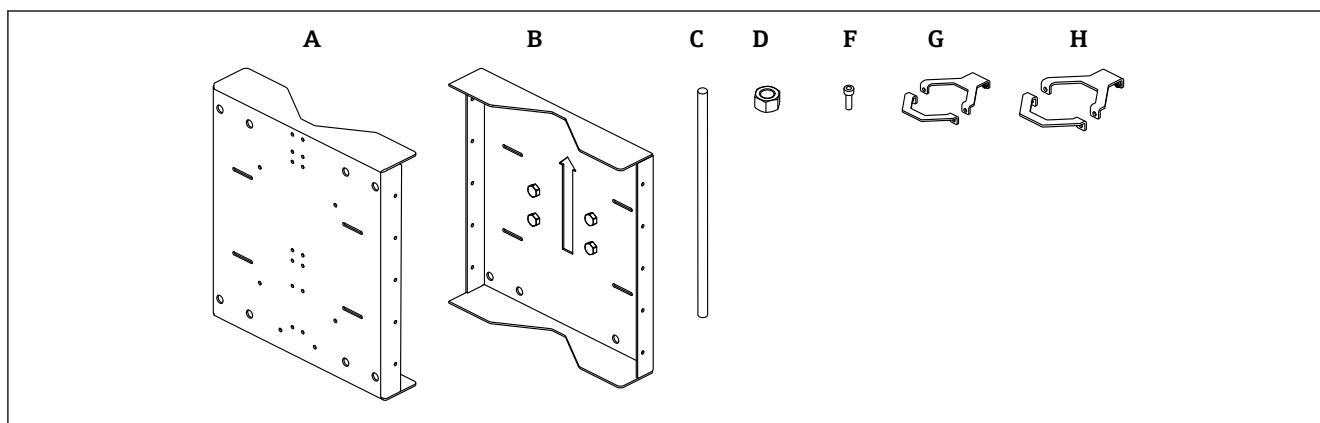
For pipes with an outer diameter of 200 to 420 mm (8 to 16.5 in)

#### Designated use

Clamping device to secure a radiometric measuring system on pipes with an outer diameter of 200 to 420 mm (8 to 16.5 in).

The radiometric measuring system comprises an FQG61 or FQG62 source container and the GammapiLOT FMG50 compact transmitter.

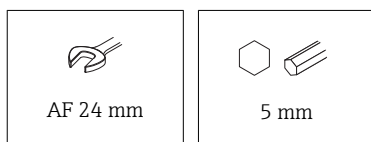
#### Overview



A0041952

- A 1 × retaining plate FMG50; 550 mm (21.65 in) × 500 mm (19.69 in) × 100 mm (3.94 in), 316L (1.4404)
- B 1 × retaining plate FQG61, FQG62; 520 mm (20.47 in) × 500 mm (19.69 in) × 100 mm (3.94 in), 316L (1.4404)
- C 4 × threaded rod DIN976-1 M16 × 600, A4
- D 20 × nut DIN EN ISO4032 M16, A4
- F 8 × screw DIN EN ISO4762 M6 × 20, A4
- G 2 × pipe bracket Ø80 mm (3.15 in); 126 mm (4.96 in) × 171 mm (6.73 in) × 18 mm (0.71 in), 316L (1.4404)
- H 1 × pipe bracket Ø95 mm (3.74 in); 140 mm (5.51 in) × 178 mm (7.01 in) × 20 mm (0.79 in), 316L (1.4404)

#### Tools list



#### Safety instructions

##### ⚠ CAUTION

##### Heavy components and devices

Risk of injury, damage to equipment

- Use hoists

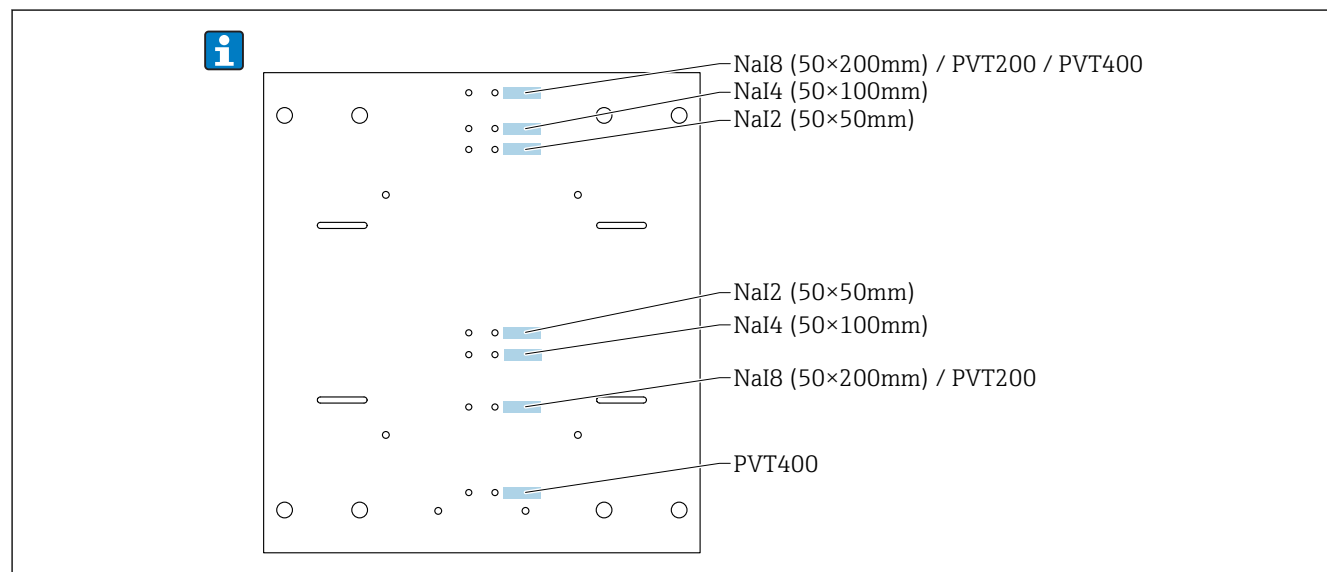
**⚠ CAUTION****Protruding threaded rods**

Risk of injury

- After installation, shorten any protruding threaded rods

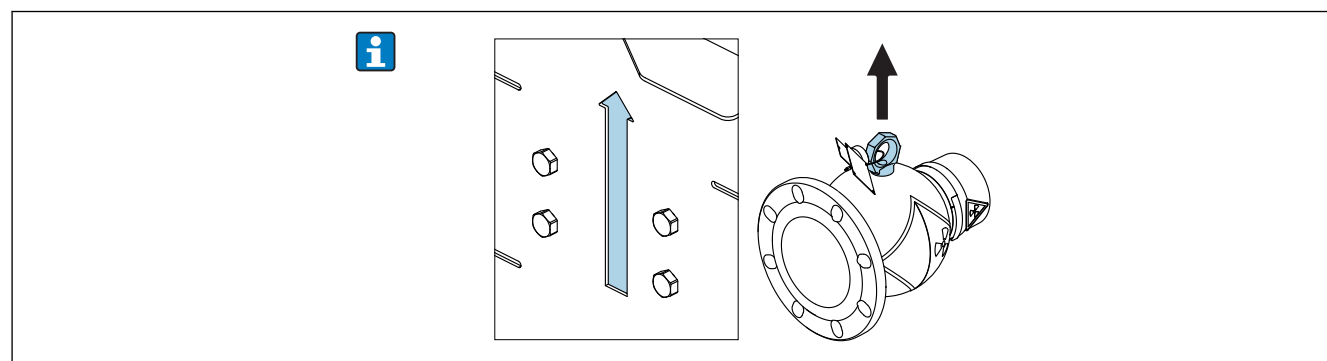
**Installation**

- i** At least three people are required for the installation
- Mount the clamping device first and then mount the devices.
- Pay attention to the mounting position of the Gammapiilot FMG50.
- In the case of the FQG61 and FQG62, ensure that the lifting eye bolt is aligned.

**Gammapiilot mounting position**

A0041940

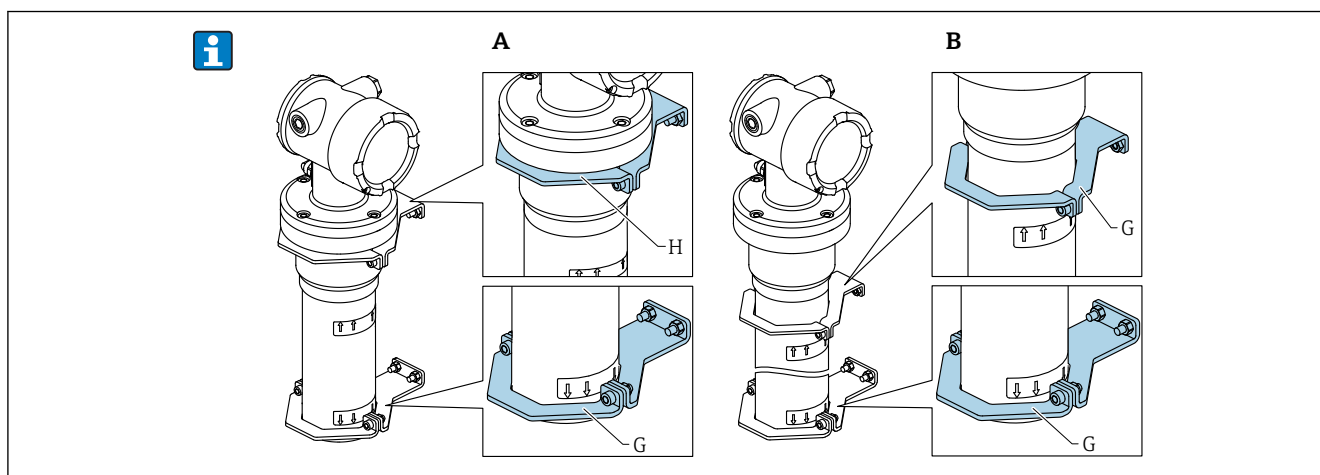
**1** Gammapiilot mounting position

**Alignment of source container**

A0042096

**2** Alignment of source container

## Mounting position of pipe bracket



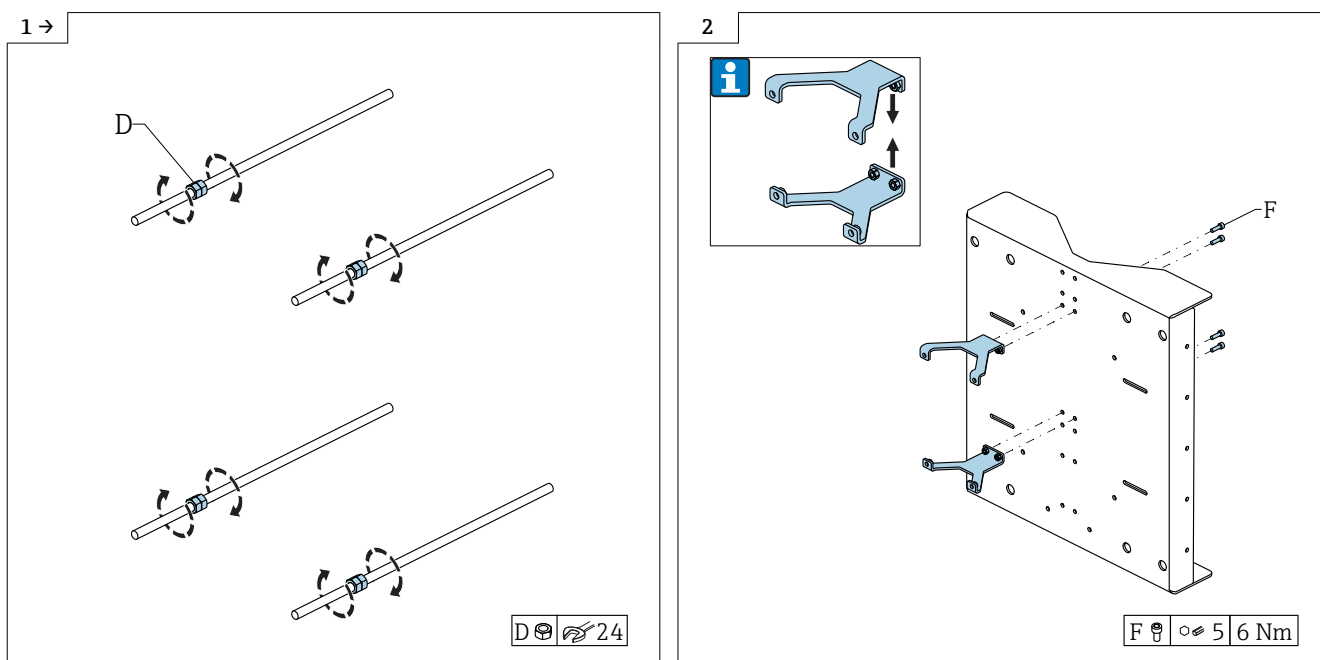
A0042097

### 3 Mounting position of pipe bracket

A FMG50 sensor - NaI, PVT200

B FMG50 sensor - PVT400

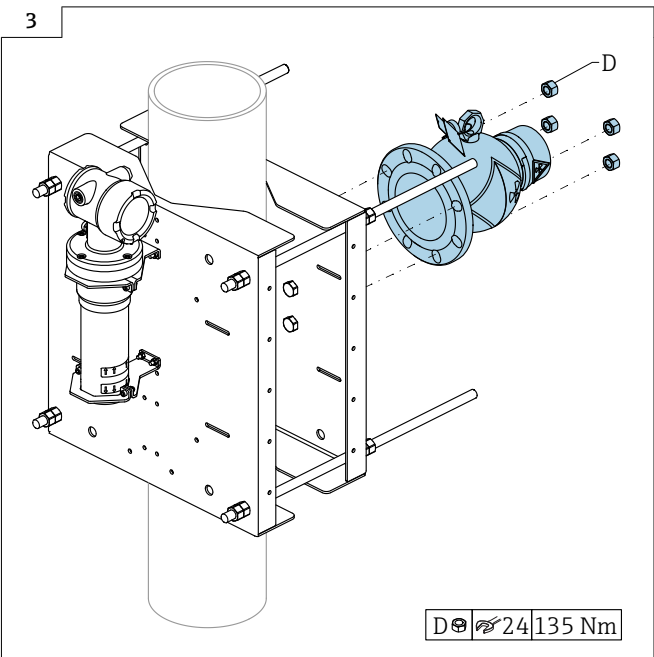
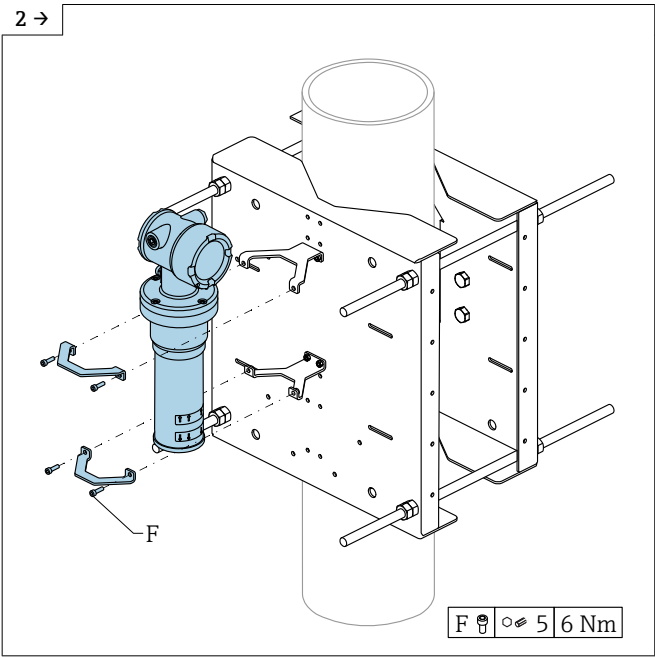
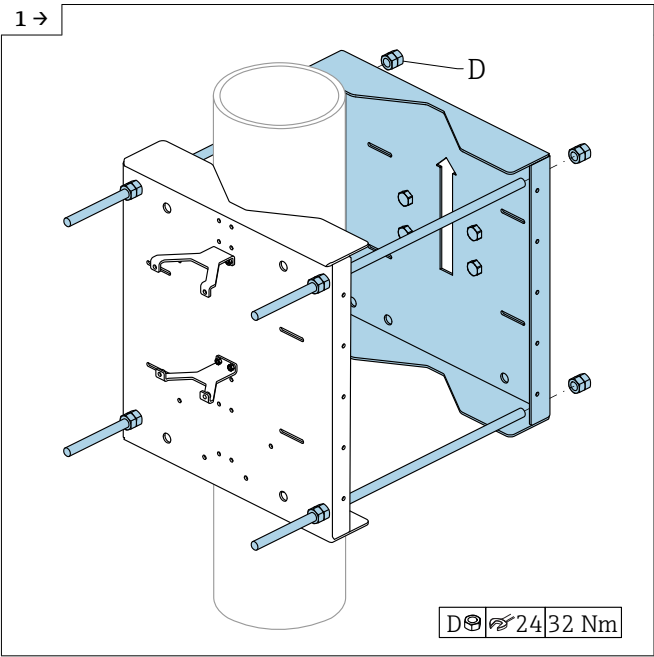
## Pre-assembly



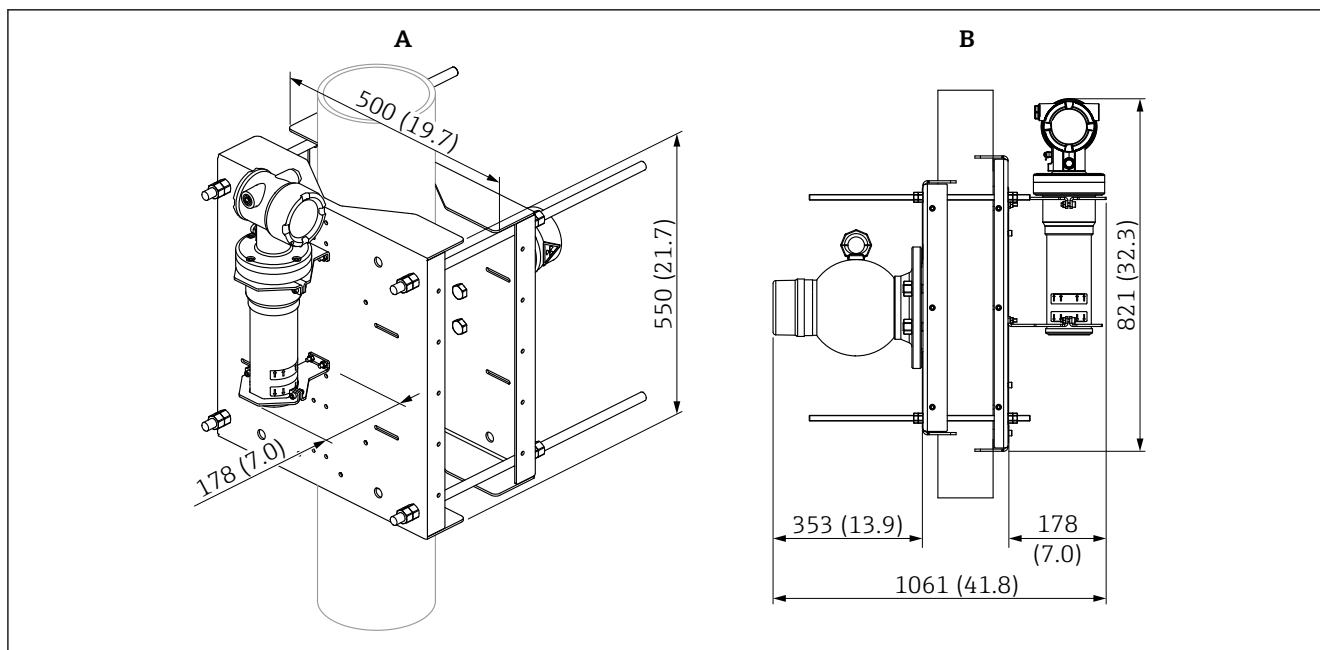
A0042032

A0042058

Installation steps



## Dimensions and weight



A0042062

Unit of measurement mm (in)

A Product dimensions

B Maximum required installation space; less space may be required depending on the device selected

Weight: approx. 31 kg (excluding detector and source container)

## Supplementary documentation

The following supplementary documentation is available in the Downloads section of the Endress+Hauser website ([www.endress.com/downloads](http://www.endress.com/downloads)):

### Gammapiilot FMG50



BA01966F

### Source container FQG61, FQG62



TI00435F

---