

Field Xpert SMT50

Universal, high-performance
device configuration tablet PC



User-centered design

Intuitive configuration of all field devices

Rugged revolution – slim, light and strong The device configuration tablet PC Field Xpert SMT50 enables mobile Plant Asset Management in non-hazardous areas. It is ideal for commissioning and maintenance staff to manage field instruments with digital communication interface and to document the work progress.

Out of the box – ready to go This tablet PC comes as complete solution and provides an easy and touch-optimized “tool” to manage field instruments during their entire life cycle resulting in saving time and cost per device. It provides pre-installed driver libraries and access to Netilion as well as life cycle instrument information and documentation.

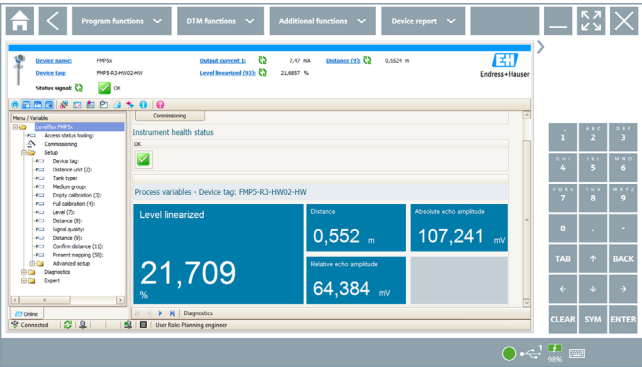
With one-click connection Field Xpert SMT50 provides a modern software user interface and offers online software, DTM and driver update capabilities, based on a multipurpose and secure Microsoft Windows 10 environment.



Supports Heartbeat Verification!



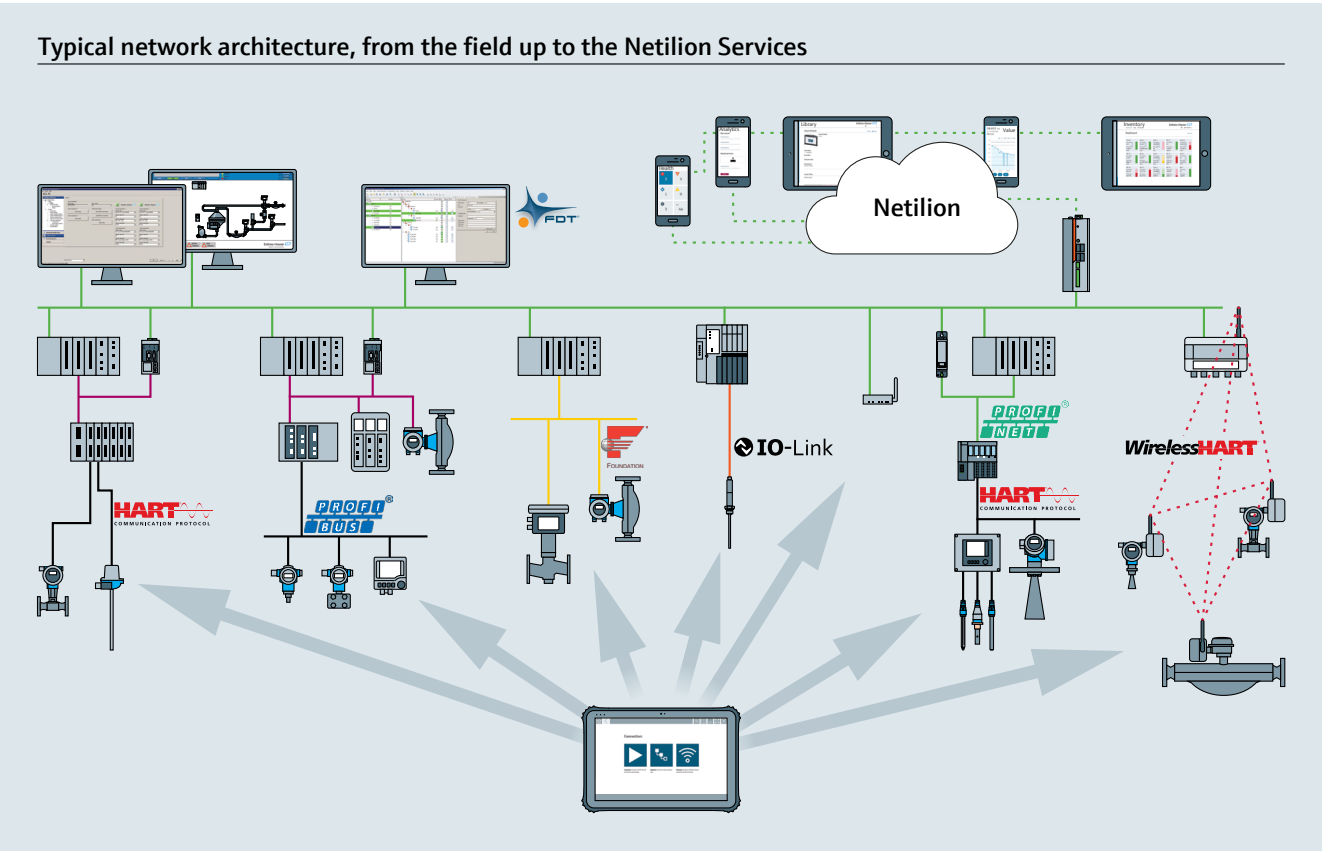
Field Xpert SMT50



User-centered design focuses on ease of use

One-click connectivity

Easy connection



Field Xpert SMT50 communicating with HART, PROFIBUS, FOUNDATION Fieldbus as well as WirelessHART (and much more) field devices

- Highlights:**
- High-performance, robust tablet with large 12.2" display and a battery runtime of up to 8 hours.
 - Touch-enabled device configuration software in 20 languages. Includes NAMUR NE 107 instrument diagnosis.
 - Pre-installed device driver libraries for all of the important industrial protocols.
 - Automatic saving of a HART device report in Netilion Library saves time and money.
 - Automatic hardware detection saves time.
 - Integrated Heartbeat Verification incl. PDF documentation.
 - Online application software, DTM and driver update service offers new functionality and maximum security.

- Technical data:**
- 12.2" sunlight readable multi-touch HD display
 - Intel Skylake Core m3-6Y30; 4 GB RAM; 128 GB SSD
 - IP65, MIL-STD-810G, -20...60 °C, 5...95 % humidity
 - Windows 10 IoT Enterprise
 - 5 MP camera on the rear with LED flashlight
 - 2 MP camera on the front
 - Wi-Fi 802.11 a/b/g/n / Bluetooth 4.0 (BLE) Class 1.5
 - 4G LTE, GPS (optional)
 - 2 x USB 2.0 + 1 x USB 3.0 + 1 Ethernet + 1x RS232
 - 1 x micro SIM and 1 x micro SD card slot
 - Battery runtime of up to 8 hours
 - 319.6 x 216 x 23.4 mm
 - 1.5 kg
 - Optional docking station (2 x USB, 1 x 1 Gbit Ethernet, 1 x RS232)

The fastest way to configure any field device via fieldbus protocols and Endress+Hauser service protocols

- Multiprotocol support** offers proven combination of hardware, software and communication interfaces.
- Connection to a device:**
 - Point-to-point via USB or Bluetooth modem
 - Network via gateways, remote IOs, multiplexer
 - Wireless via WLAN and Bluetooth to Endress+Hauser field devices
- Supported communication technologies:**
 - HART
 - PROFIBUS DP/PA
 - FOUNDATION Fieldbus
 - IO-Link
 - Modbus
 - CDI
 - Endress+Hauser service interfaces (incl. firmware flashing)
- Supported hardware interfaces:**
 - Commubox FXA195 (HART)
 - MACTek Bluetooth modem (HART)
 - PROFIBUS (PROFIBUS DP)
 - Fieldgate SFG500 (PROFIBUS DP)
 - FieldPort SFP50 (HART, PROFIBUS PA and FOUNDATION Fieldbus)
 - FieldPort SFP20 (IO-Link)
 - FFusb (FF-H1)
 - Commubox FXA291 (CDI)
 - CDI TCP/IP
 - Memograph RSG45 (HART)
 - HART Viator USB modem with PowerXpress
- Supported field devices:**
 - All Endress+Hauser and 3rd party devices based on DTM or EDD technology



More details on Netilion Library



netilion.endress.com/library-best-practice

www.addresses.endress.com

INO1172S/04/EN/01.20