

Operating Instructions

Liquicap M

FMI52 PFM

Capacitive
Continuous level measurement for liquids



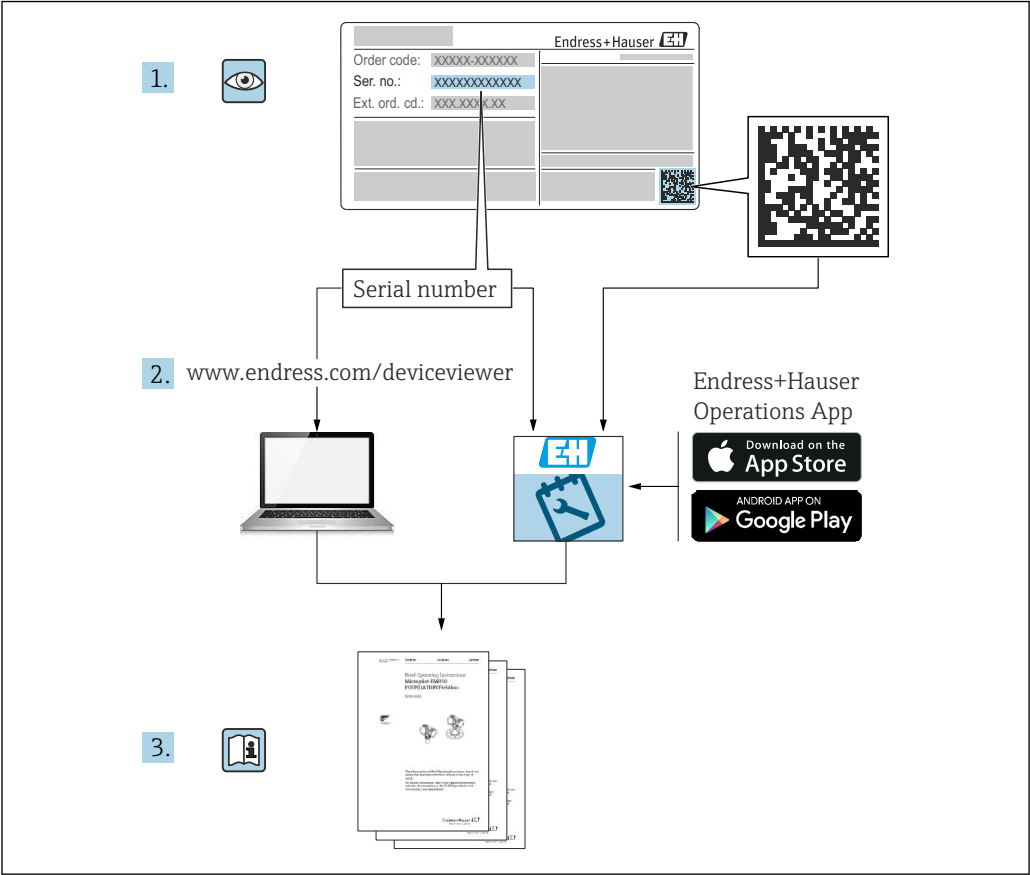


Table of contents

1	About this document	5		
1.1	Document function	5		
1.2	Document conventions	5		
1.2.1	Safety symbols	5		
1.2.2	Electrical symbols	5		
1.2.3	Tool symbols	5		
1.2.4	Symbols for certain types of information and graphics	6		
1.3	Documentation	7		
1.3.1	Technical Information	7		
1.3.2	Certificates	7		
1.3.3	Hygienic compatibility	8		
1.4	Registered trademarks	8		
2	Basic safety instructions	9		
2.1	Requirements for the personnel	9		
2.2	Workplace safety	9		
2.3	Operational safety	9		
2.3.1	Ex-area	9		
2.4	Product safety	9		
3	Incoming acceptance and product identification	10		
3.1	Incoming acceptance	10		
3.2	Product identification	10		
3.3	Storage and transport	10		
4	Mounting	11		
4.1	Quick installation guide	11		
4.2	Mounting requirements	11		
4.2.1	Mounting the sensor	11		
4.2.2	Measuring condition	12		
4.2.3	Minimum probe length for nonconductive media < 1 µS/cm	12		
4.2.4	Installation examples	13		
4.3	Probe with separate housing	15		
4.3.1	Extension heights: separate housing	15		
4.3.2	Wall bracket	16		
4.3.3	Wall mounting	17		
4.3.4	Pipe mounting	17		
4.3.5	Shortening the connecting cable	18		
4.4	Installation instructions	19		
4.4.1	Probe installation	20		
4.4.2	Aligning the housing	21		
4.4.3	Sealing the probe housing	21		
4.5	Post-installation check	21		
5	Electrical connection	23		
5.1	Connecting requirements	23		
5.1.1	Potential equalization	23		
5.1.2	Electromagnetic compatibility (EMC)	23		
5.1.3	Cable specification	23		
5.1.4	Connector	24		
5.1.5	Supply voltage	24		
5.2	Wiring and connecting	24		
5.2.1	Connection compartment	24		
5.2.2	Cable entry	25		
5.2.3	Supply voltage	26		
5.2.4	Power consumption	26		
5.2.5	Current consumption	26		
5.2.6	Terminal assignment	26		
5.3	Post-connection check	26		
6	Operation options	27		
6.1	Display and operating elements	27		
7	Commissioning	28		
7.1	Function check	28		
7.2	Transmitter	28		
8	Diagnostics and troubleshooting	29		
8.1	Diagnostic information via LEDs	29		
8.1.1	Green LED is not flashing	29		
8.1.2	Red LED flashing	29		
8.2	Application errors	29		
8.3	Possible measuring errors	29		
8.3.1	Measured value is incorrect	29		
8.4	Firmware history	30		
9	Maintenance	31		
9.1	External cleaning	31		
9.2	Cleaning the probe	31		
9.3	Seals	31		
9.4	Endress+Hauser services	31		
10	Repair	32		
10.1	General notes	32		
10.2	Spare parts	32		
10.3	Repairing Ex-certified devices	32		
10.4	Return	33		
10.5	Disposal	33		
10.5.1	Removing the measuring device	33		
10.5.2	Disposing of the measuring device	33		
10.6	Replacement	33		
11	Accessories	34		
11.1	Protective cover	34		
11.2	Shortening set for FMI52	34		
11.3	Surge arresters	34		
11.3.1	HAW562	34		
11.3.2	HAW569	34		
11.4	Weld-in adapter	34		

12	Technical data	35
12.1	Probe	35
12.1.1	Capacitance values of the probe	35
12.1.2	Additional capacitance	35
12.1.3	Probe lengths for continuous measurement in conductive liquids	35
12.2	Input	35
12.2.1	Measured variable	35
12.2.2	Measuring range	35
12.3	Output	36
12.3.1	Output signal	36
12.3.2	Signal on alarm	36
12.3.3	Linearization	36
12.4	Performance characteristics	36
12.4.1	Reference operating conditions	36
12.4.2	Maximum measured error	36
12.4.3	Influence of ambient temperature	36
12.4.4	Switch-on behavior	36
12.4.5	Measured value reaction time	36
12.4.6	Accuracy of factory calibration	37
12.4.7	Resolution	38
12.5	Operating conditions: Environment	38
12.5.1	Ambient temperature range	38
12.5.2	Climate class	38
12.5.3	Vibration resistance	38
12.5.4	Shock resistance	38
12.5.5	Cleaning	38
12.5.6	Degree of protection	38
12.5.7	Electromagnetic compatibility (EMC)	39
12.6	Operating conditions: Process	39
12.6.1	Process temperature range	39
12.6.2	Process pressure limits	41
12.6.3	Pressure and temperature derating	42
	Index	44

1 About this document

1.1 Document function

These Operating Instructions contain all the information that is required in various phases of the life cycle of the device: from product identification, incoming acceptance and storage, to mounting, connection, operation and commissioning through to troubleshooting, maintenance and disposal.

1.2 Document conventions

1.2.1 Safety symbols

DANGER

This symbol alerts you to a dangerous situation. Failure to avoid this situation will result in serious or fatal injury.

WARNING

This symbol alerts you to a dangerous situation. Failure to avoid this situation can result in serious or fatal injury.

CAUTION

This symbol alerts you to a dangerous situation. Failure to avoid this situation can result in minor or medium injury.

NOTICE

This symbol contains information on procedures and other facts which do not result in personal injury.

1.2.2 Electrical symbols



Alternating current



Direct current and alternating current



Direct current



Ground connection

A grounded terminal which, as far as the operator is concerned, is grounded via a grounding system.

Protective earth (PE)

Ground terminals that must be connected to ground prior to establishing any other connections.

The ground terminals are located on the interior and exterior of the device:

- Interior ground terminal: protective earth is connected to the mains supply.
- Exterior ground terminal: device is connected to the plant grounding system.

1.2.3 Tool symbols



Phillips head screwdriver



Flat blade screwdriver



Torx screwdriver



Allen key



Open-ended wrench

1.2.4 Symbols for certain types of information and graphics



Permitted

Procedures, processes or actions that are permitted



Preferred

Procedures, processes or actions that are preferred



Forbidden

Procedures, processes or actions that are forbidden



Tip

Indicates additional information



Reference to documentation



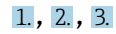
Reference to page



Reference to graphic



Notice or individual step to be observed



Series of steps



Result of a step



Help in the event of a problem



Visual inspection



Operation via operating tool



Write-protected parameter

1, 2, 3, ...

Item numbers

A, B, C, ...

Views



Hazardous area

Indicates the hazardous area



Safe area (non-hazardous area)

Indicates the non-hazardous area



Safety instructions

Observe the safety instructions contained in the associated Operating Instructions



Temperature resistance of the connection cables

Specifies the minimum value of the temperature resistance of the connection cables



LED not lit



LED lit



LED flashes

1.3 Documentation

1.3.1 Technical Information

Liquicap M FMI52
TI01524F

1.3.2 Certificates

ATEX safety instructions

Liquicap M FMI52

- II 1/2 G Ex ia IIC T3...T6 Ga/Gb
II 1/2 G Ex ia IIB T3...T6 Ga/Gb
II 1/2 D Ex ia IIIC T90 °C Da/Db
XA00327F
- II 1/2 Ex ia/db IIC T6...T3 Ga/Gb
II 1/2 Ex ia/db eb IIC T6...T3 Ga/Gb
II 1/2 D Ex ia /tb IIIC T90 °C Da/Db
XA00328F
- Ga/Gb Ex ia IIC T3...T6
Zone 20/21 Ex iaD 20/Ex tD A21 IP65 T 90 °C
IECEX BVS 08.0027X
XA00423F
- II 3 G Ex nA IIC T6 Gc
II 3 G Ex nA nC IIC T5 Gc
II 3C D Ex tc IIIC T100 °C Dc
XA00346F

INMETRO safety instructions

Liquicap M FMI52

- Ex d [ia Ga] IIB T3...T6 Ga/Gb
Ex d [ia Ga] IIC T3...T6 Ga/Gb
Ex de [ia Ga] IIC T3...T6 Ga/Gb
XA01171F
- Ex ia IIC T* Ga/Gb
Ex ia IIB T* Ga/Gb
Ex ia IIIC T90 °C Da/Db IP66
XA01172F

NEPSI safety instructions

- Liquicap M FMI52
Ex ia IIC/IIB T3...T6 Ga/Gb
XA00417F
- Liquicap M FMI52
Ex d ia IIC/IIB T3/T4/T6 Ga/Gb
Ex d e ia IIC/IIB T3/T4/T6 Ga/Gb
XA00418F
- Liquicap M FMI52
Ex nA IIC T3...T6 Gc
Ex nA nC IIC T3...T6 Gc
XA00430F

Overfill protection DIBt (WHG)

Liquicap M FMI52
ZE00265F

Functional safety (SIL2)

Liquicap M FMI52
SD00198F

Control Drawings (CSA and FM)

- Liquicap M FMI52
FM IS
ZD00220F
- Liquicap M FMI52
CSA IS
ZD00221F
- Liquicap M FMI52
CSA XP
ZD00233F

1.3.3 Hygienic compatibility

Information regarding device versions that meet the requirements of 3A Sanitary Standard No. 74 and/or are certified by the EHEDG:



SD02503F



Suitable fittings and seals must be used to ensure hygiene-compliant design according to 3A and EHEDG specifications.

Comply with the maximum permitted temperature of the process seal.

The gap-free connections can be cleaned of all residue using the typical cleaning methods within this industry (CIP and SIP).

1.4 Registered trademarks**HART®**

Registered trademark of the FieldComm Group, Austin, USA

TRI CLAMP®

Registered trademark of Alfa Laval Inc., Kenosha, USA

2 Basic safety instructions

2.1 Requirements for the personnel

The personnel must fulfill the following requirements to carry out the necessary tasks:

- ▶ Are trained, qualified to perform specific functions and tasks.
- ▶ Are authorized by the plant owner or operator to perform specific tasks.
- ▶ Are familiar with federal or national regulations.
- ▶ Have read and understood the instructions in the manual and supplementary documentation.
- ▶ They follow instructions and comply with conditions.

2.2 Workplace safety

For work on and with the device:

- ▶ Wear the required protective equipment according to federal or national regulations.

2.3 Operational safety

When performing configuration, testing, and maintenance work on the device, alternative supervisory measures must be taken to guarantee the operational safety and process safety.

2.3.1 Ex-area

When using the measuring system in Ex-areas, the appropriate national standards and regulations must be observed. Separate Ex-documentation, which constitutes an integral part of this documentation, is supplied with the device. The installation procedures, connection data and safety instructions it contains must be observed.

- Make sure that the technical staff has adequate training.
- The special measuring and safety-related requirements for the measuring points must be observed.

2.4 Product safety

This measuring device is designed following good engineering practice to meet state-of-the-art safety requirements, has been tested, and left the factory in a condition in which it is safe to operate.

It meets general safety standards and legal requirements. It is compliant with the EC directives listed in the device-specific EC Declaration of Conformity. Endress+Hauser confirms this by affixing the CE mark to the device.

3 Incoming acceptance and product identification

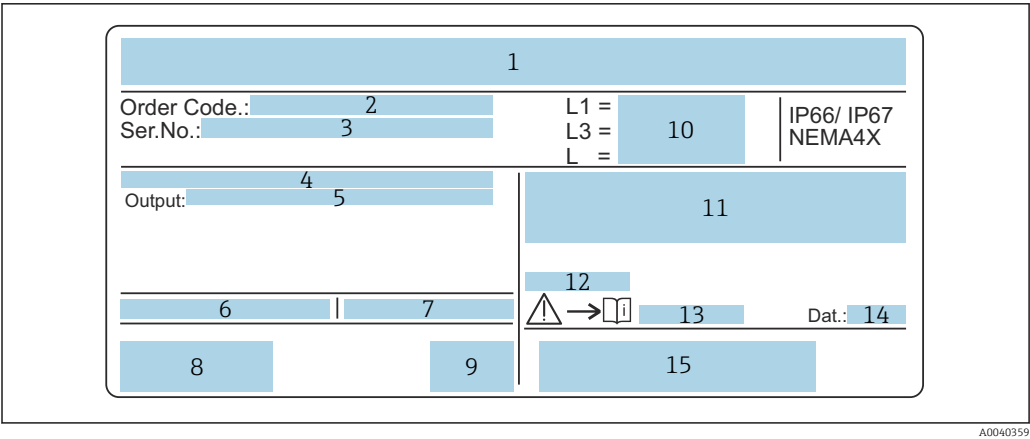
3.1 Incoming acceptance

Check whether the packaging or content is damaged. Check that the goods delivered are complete and compare the scope of delivery with the information in your order.

3.2 Product identification

The measuring device can be identified in the following ways:

- nameplate data
- extended order code with a breakdown of the device features on the delivery note
- the serial number from nameplates in *W@M Device Viewer* (www.endress.com/deviceviewer): all of the information on the measuring device is displayed along with an overview of the scope of the technical documentation provided
- the serial number on the nameplate into the *Endress+Hauser Operations App* or use the *Endress+Hauser Operations App* to scan the 2-D matrix code (QR Code) on the nameplate



- 1 The nameplate
- 2 Order number
- 3 Serial number
- 4 Electronic insert
- 5 Electronic insert output value
- 6 Ambient temperature at housing
- 7 Max. permissible pressure in a tank
- 8 Safety certificates
- 9 Functional safety
- 10 Probe length values
- 11 ATEX approval
- 12 WHG approval (German Water Resources Act)
- 13 Safety information
- 14 Production date
- 15 Bar code

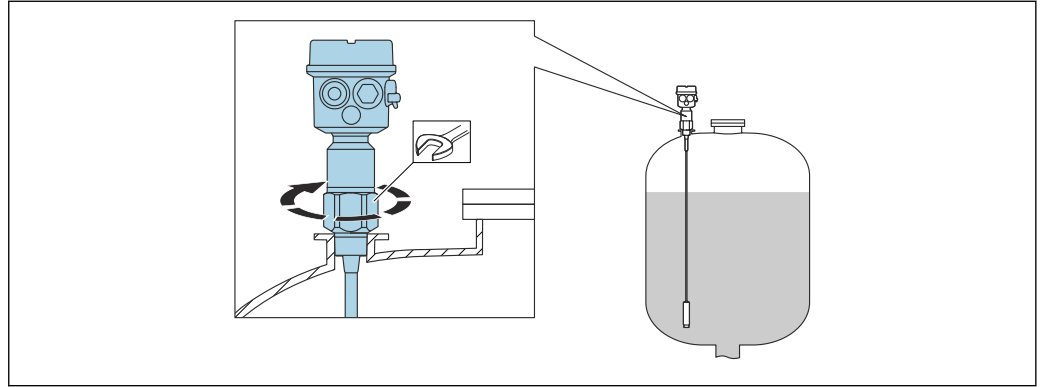
3.3 Storage and transport

For storage and transportation, pack the device to protect it against impact. The original packing offers the best protection for this. The permitted storage temperature is -50 to +85 °C (-58 to +185 °F).

4 Mounting

4.1 Quick installation guide

A probe installation



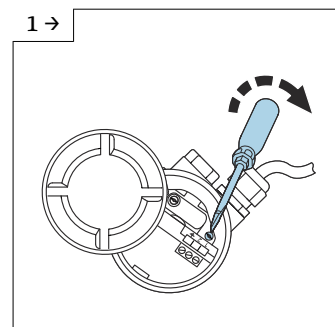
A0041919

1. Screw the probe onto the proper place.
2. Fasten the probe with proper torque in accordance with the thread size.

Thread size and torque value

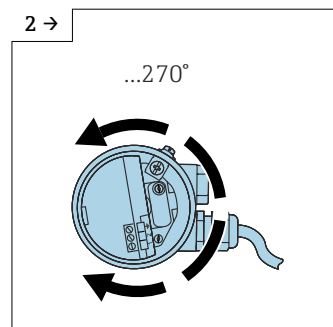
- G½: < 80 Nm (59.0 lbf ft)
- G¾: < 100 Nm (73.7 lbf ft)
- G1: < 180 Nm (132.8 lbf ft)
- G1½: < 500 Nm (368.7 lbf ft)

Aligning the housing



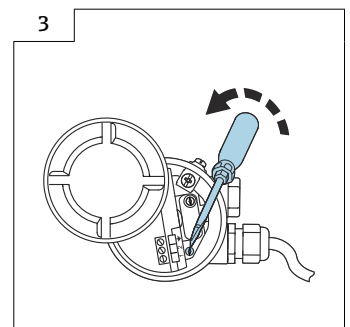
A0042107

- Loosen the clamping screw.



A0042108

- Align the housing into the needed position.



A0042109

- Tighten the clamping screw with torque < 1 Nm (0.74 lbf ft)

4.2 Mounting requirements

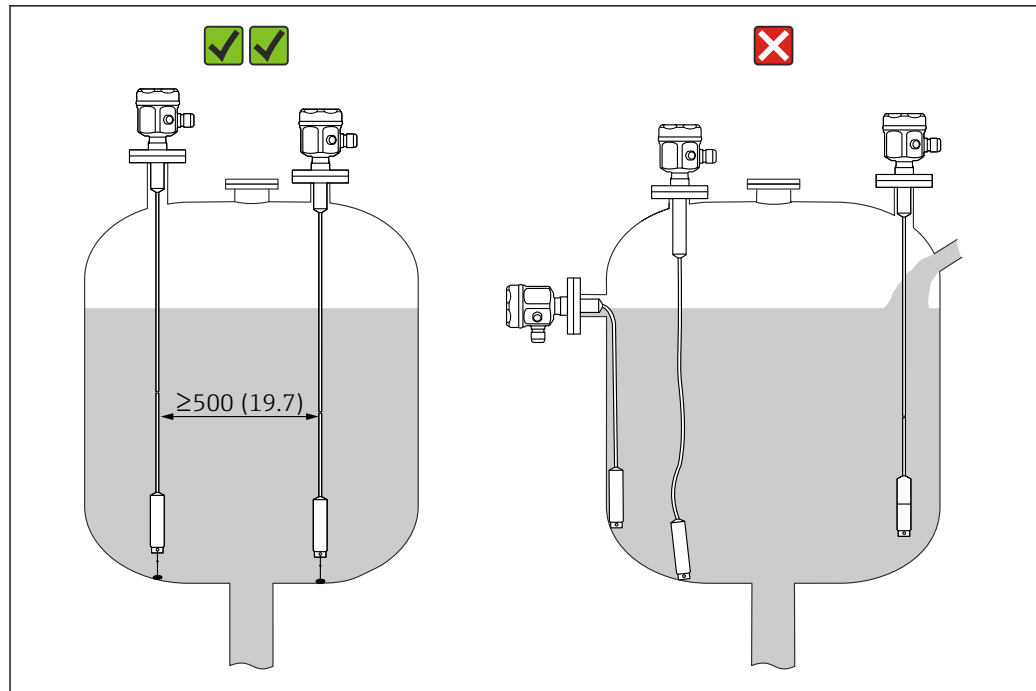
4.2.1 Mounting the sensor

The Liquicap M FMI52 can be installed vertically from above.



Make sure that:

- the probe is not installed in the area of the filling curtain
- the probe is not in contact with the container wall
- the distance from the container floor is ≥ 10 mm (0.39 in)
- multiple probes are mounted next to each other at the minimum distance between the probes of 500 mm (19.7 in)

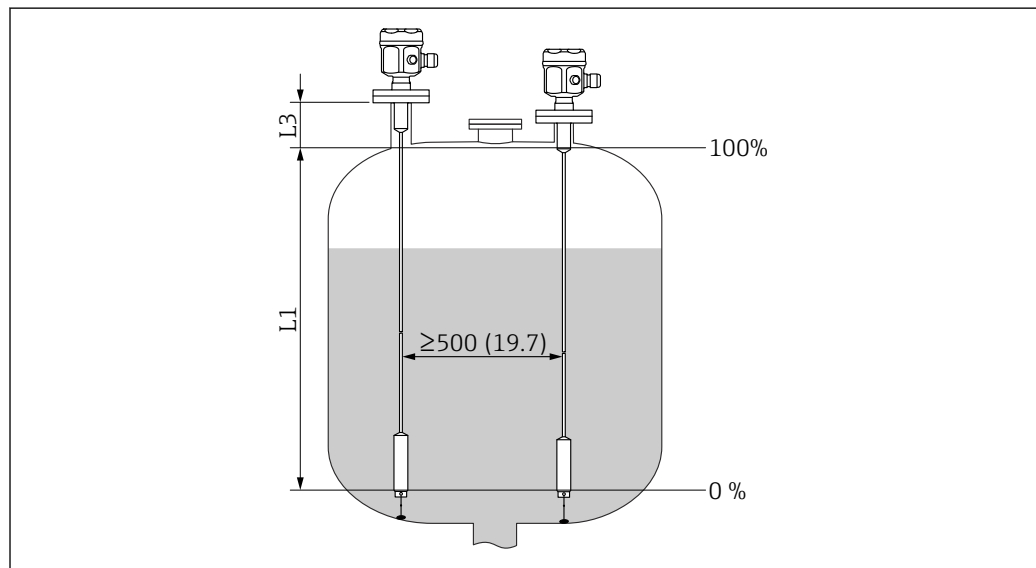


A0040578

Unit of measurement mm (in)

4.2.2 Measuring condition

Measuring range L1 is possible from the tip of the probe to the process connection.



A0040579

Unit of measurement mm (in)

L1 Measuring range

L3 Inactive length

i When installing in a nozzle, use inactive length L3.

The 0 % and 100 % calibration can be inverted.

4.2.3 Minimum probe length for nonconductive media $< 1 \mu\text{S}/\text{cm}$

The minimum probe length can be calculated using the formula:

$$l_{\min} = \frac{\Delta C_{\min}}{C_s \cdot (\epsilon_r - 1)}$$

A0040204

l_{\min} minimum probe length

ΔC_{\min} 5 pF

C_s probe capacitance in air

ϵ_r dielectric constant, e.g. oil = 2.0



To check the probe capacitance in the air, go to the chapter → 35.

4.2.4 Installation examples

Rope probes

The probe can be installed from above in conductive tanks made from metal.

If the process connection of the probe is insulated from the metal tank using a seal material, then the ground connection on the probe housing must be connected to the tank using a short line.



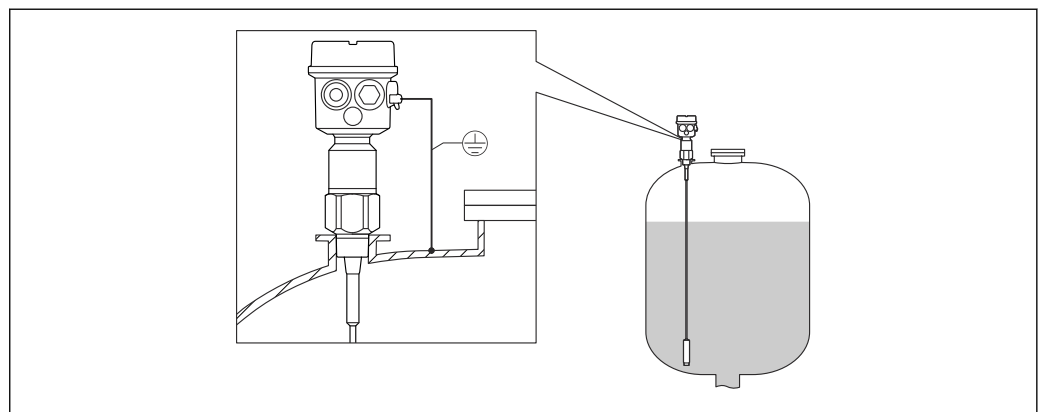
- The probe may not come into contact with the container wall! Do not install probes in the area of the filling curtain.
- If multiple probes are mounted next to each other, a minimum distance of 500 mm (19.7 in) between the probes must be observed.
- When mounting, ensure there is a good electrically conductive connection between the process connection and the tank. Use an electrically conductive sealing band for example.



A fully insulated rope probe may be neither shortened nor extended.

Damaged insulation of the probe rope causes improper measurements.

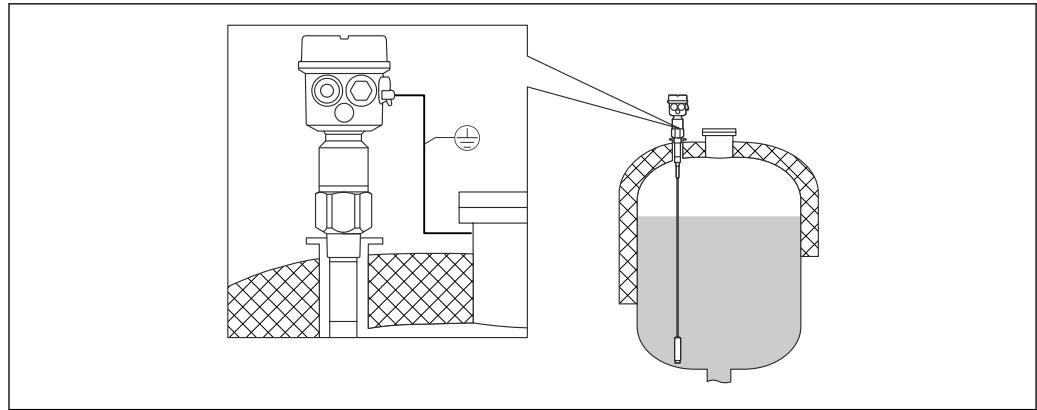
The following application examples show the vertical installation for continuous level measurement.



A0040451

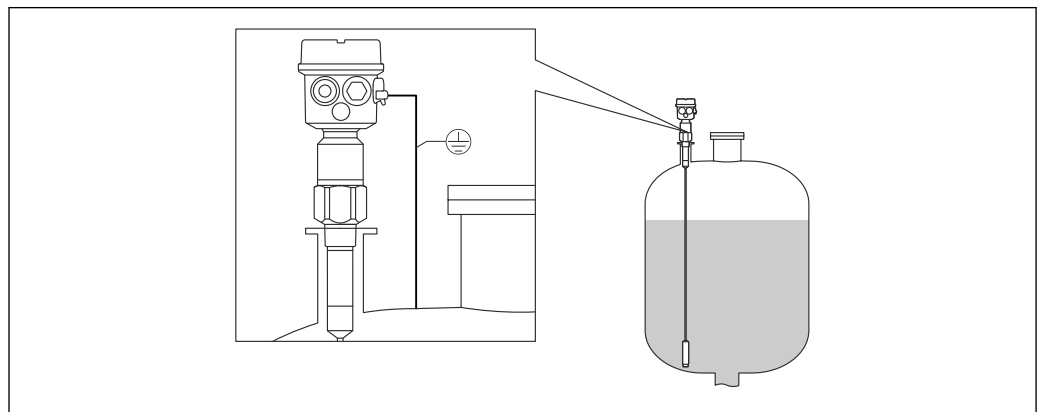


2 Rope probe



A0040452


3 A probe with inactive length for the insulated tanks



A0040453

4 A probe with fully insulated inactive length for mounting nozzles

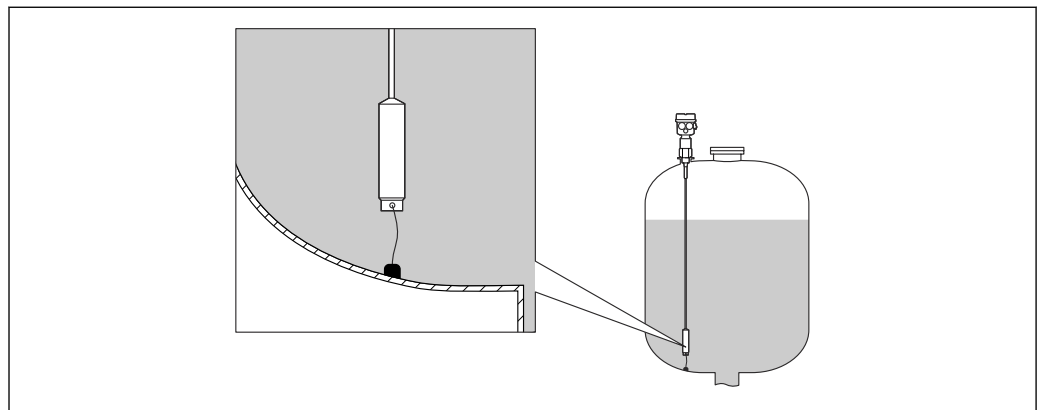
Shortening the rope

 For information about the shortening kit, see Brief Operating Instructions KA061F/00.

Tensioning weight with tension

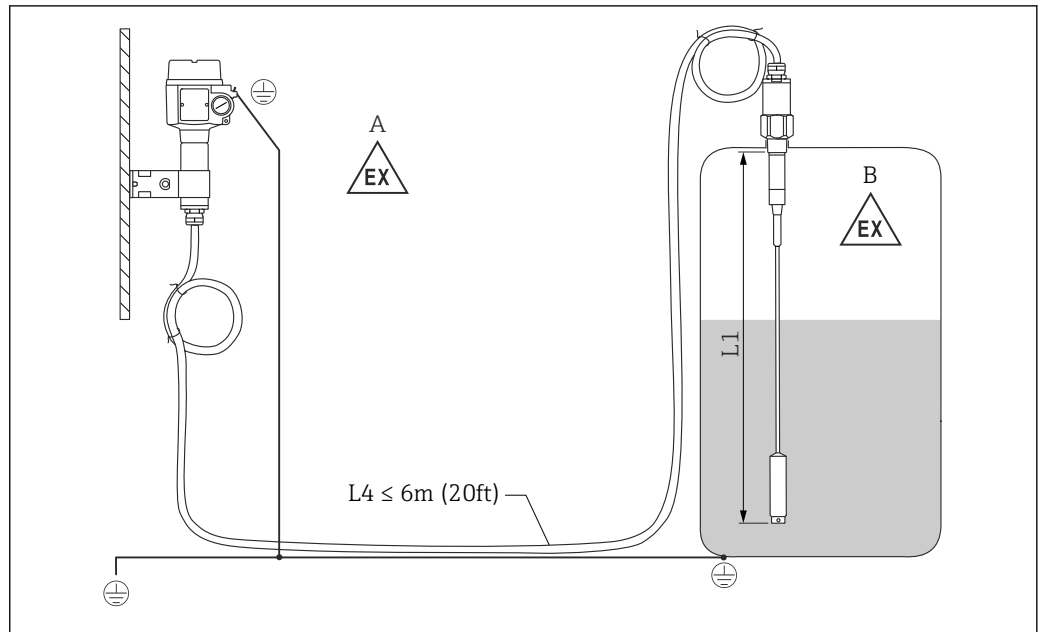
The end of the probe needs to be secured if the probe would otherwise touch the silo wall or another part in the tank. This is what the internal thread in the probe weight is intended for. The bracing can be conductive or insulating to the tank wall.

To avoid too high tensile load, the rope should be loose or guyed with a spring. The maximum tensile load may not exceed 200 Nm (147.5 lbf ft).



A0040462

4.3 Probe with separate housing



A0040473

5 Connection of the probe and separate housing

- A Explosive zone 1
 B Explosive zone 0
 L1 Rope length: max 9.7 m (32 ft)
 L4 Cable length: max. 6 m (20 ft)

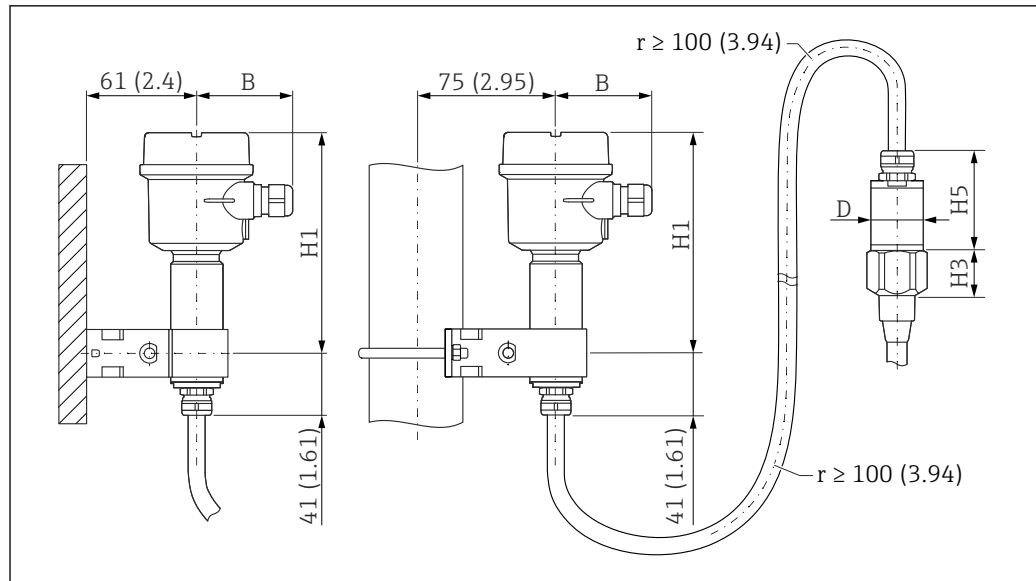
The maximum cable length L4 and rope length L1 cannot exceed 10 m (33 ft).

- i** The maximum cable length between the probe and separate housing is 6 m (20 ft). The required cable length must be indicated in the ordering process of a Liquicap M with separate housing.

If the cable connection has to be shortened or led through a wall, then it must be separated from the process connection.

4.3.1 Extension heights: separate housing

- i** The cable:
- has a minimum bending radius of $r \geq 100 \text{ mm}$ (3.94 in)
 - diameter $\varnothing 10.5 \text{ mm}$ (0.14 in)
 - outer jacket made of silicone, notch resistance



A0040471

6 Housing side: wall mounting, pipe mounting, and sensor side. Unit of measurement mm (in)

Values of parameters ¹⁾:

Polyester housing (F16)

- B: 76 mm (2.99 in)
- H1: 172 mm (6.77 in)

Polyester housing (F15)

- B: 64 mm (2.52 in)
- H1: 166 mm (6.54 in)

Aluminum housing (F17)

- B: 65 mm (2.56 in)
- H1: 177 mm (6.97 in)

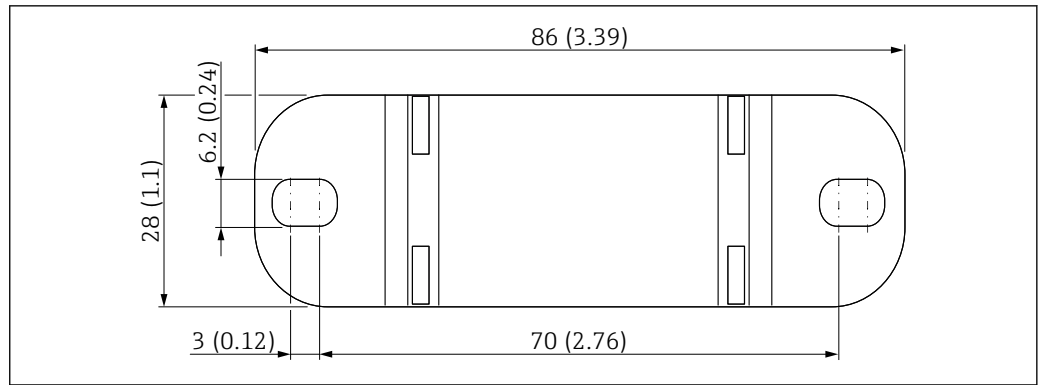
D and H5 parameter

- rope probe without fully insulated inactive length and threads G $\frac{3}{4}$ ", G1", NPT $\frac{3}{4}$ ", NPT1", Clamp 1", Clamp 1 $\frac{1}{2}$ ", Universal \varnothing 44 mm (1.73 in), flange < DN50, ANSI 2", 10K50:
 - D: 38 mm (1.5 in)
 - H5: 66 mm (2.6 in)
- rope probe without fully insulated inactive length and threads G1 $\frac{1}{2}$ ", NPT1 $\frac{1}{2}$ ", Clamp 2", DIN 11851, flange \geq DN50, ANSI 2", 10K50
 - D: 50 mm (1.97 in)
 - H5: 89 mm (3.5 in)
- rope probe with fully insulated inactive length:
 - D: 38 mm (1.5 in)
 - H5: 89 mm (3.5 in)

4.3.2 Wall bracket

- i** ■ The wall bracket is a part of the scope of delivery.
- To use the wall bracket as a drill template, the wall bracket must be first screwed to the separate housing.
- The distance between the holes is reduced by screwing it to the separate housing.

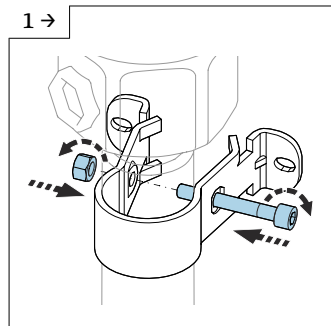
1) See parameters on the drawings.



A0033881

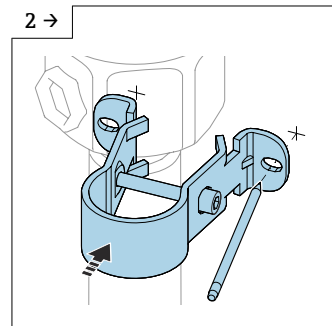
Unit of measurement mm (in)

4.3.3 Wall mounting



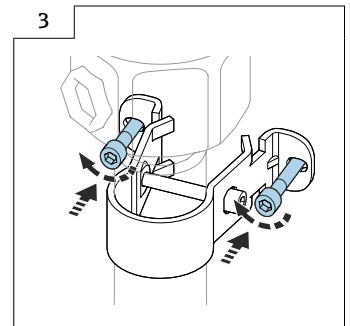
A0042318

- Screw together the wall bracket on the tube.



A0042319

- Mark the distance between the holes on the wall before drilling.



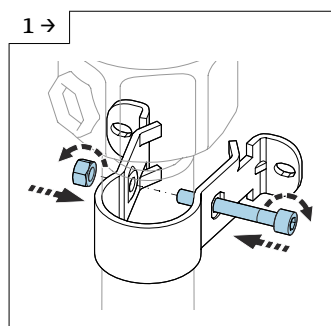
A0042320

- Screw the separate housing on the wall.

4.3.4 Pipe mounting

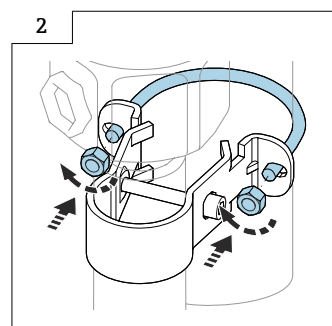


The maximum pipe diameter is 50.8 mm (2 in).



A0042318

- Screw together the wall bracket on the tube.



A0042321

- Screw the separate housing on a pipe.

4.3.5 Shortening the connecting cable

NOTICE

Risk of damage to connections and cable.

- Make sure that neither the connecting cable nor the probe is turning with the pressing screw!

i Recalibration must be performed before commissioning.

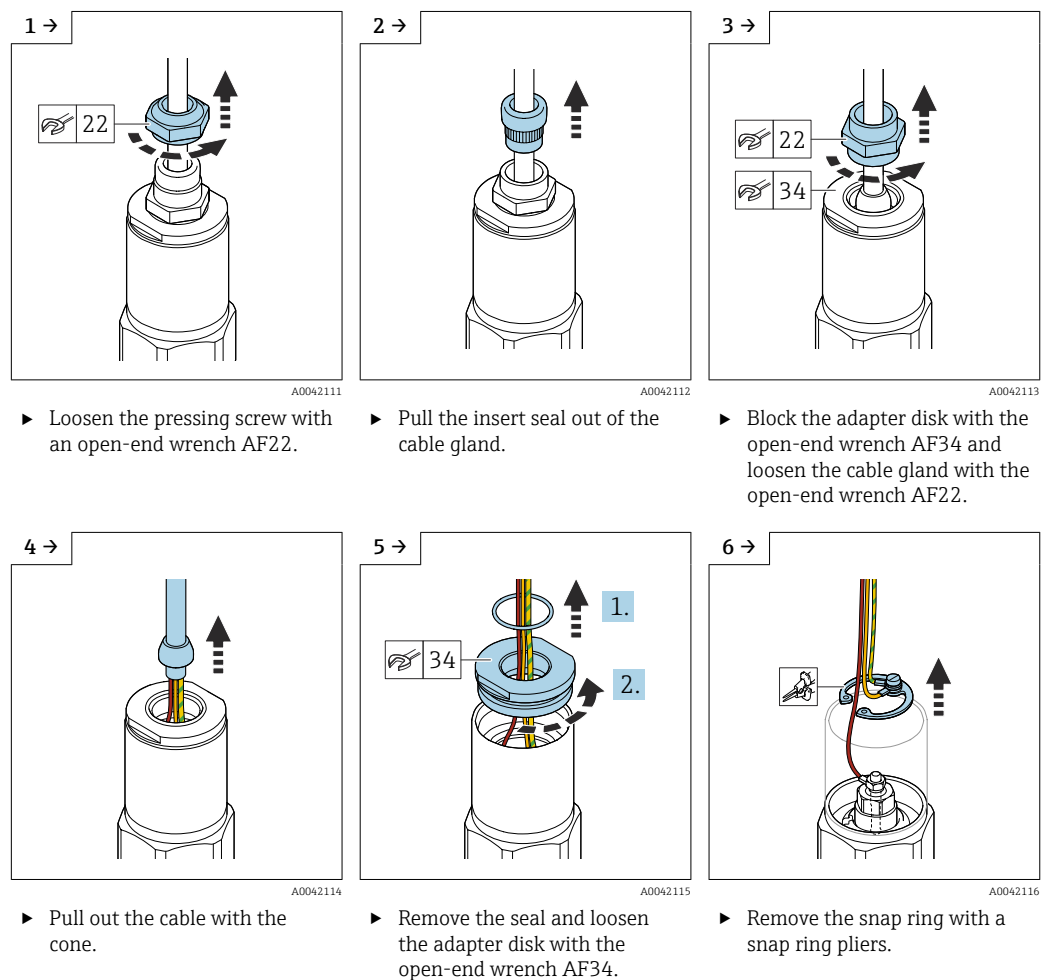
The maximum connection length between the probe and the separate housing is 6 m (20 ft).

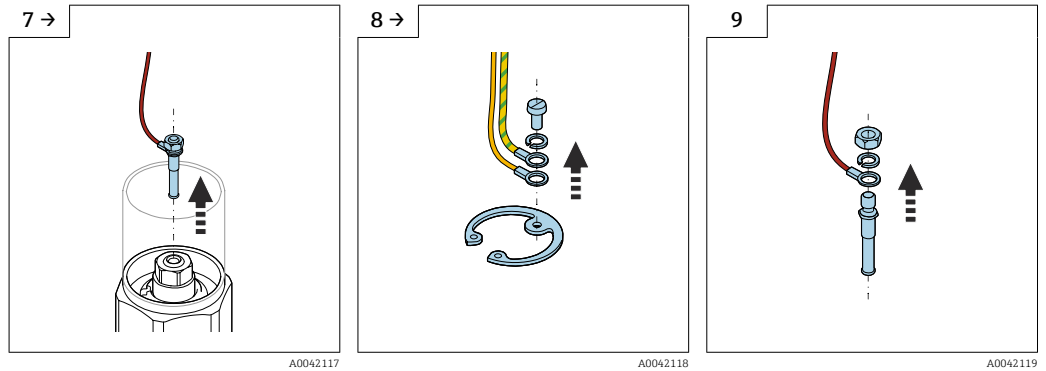
When ordering a device with separate housing, the desired length must be specified.

If the cable connection has to be shortened or led through a wall, it must be separated from the process connection.

Disconnecting the connection cable

i Make sure that the connecting cable and the probe is not turning with the pressing screw.

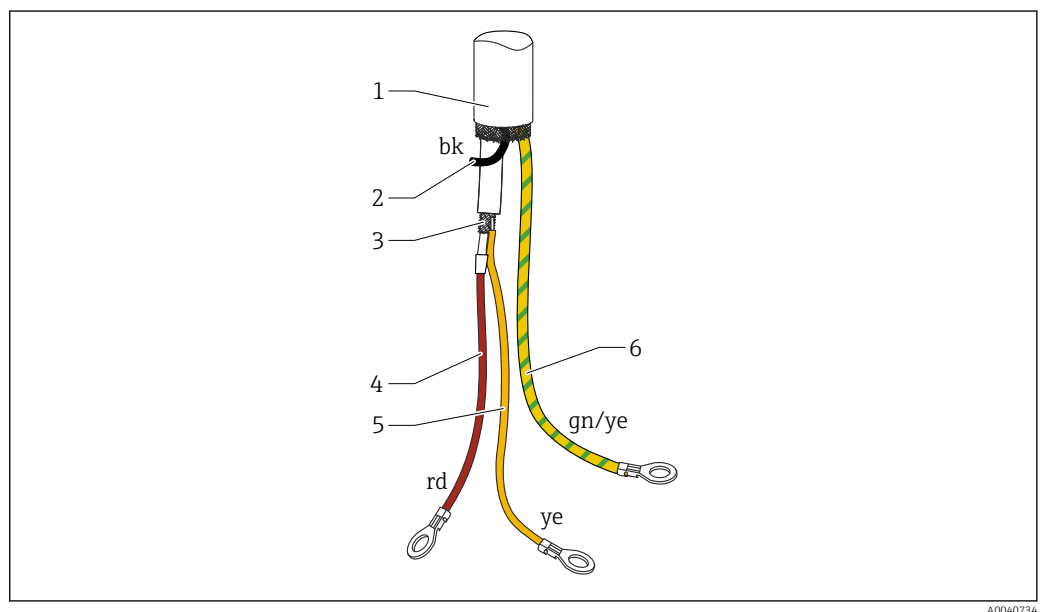




► Remove the blade plug from the socket.

► Loosen the screw to disconnect the yellow and yellow-green cables.

► Loosen the nut (M4) of the blade plug.



7 Cable connections

- 1 External screening (not required)
- 2 Strand black (bk) (not required)
- 3 Coaxial cable with central core and screening
- 4 Solder the red (rd) strand with the central core of the coaxial cable (probe)
- 5 Solder the strand with the screening of the yellow (ye) coaxial cable (ground)
- 6 Strand yellow and green (gn/ye) with a ring terminal

- i** ■ We recommend reusing all strands with ring terminals in case of shortening the connecting cable
- To avoid the risk of short-circuiting when the strands are not to be reused, the connections of the new ring terminals must be insulated with a heat shrinking sleeve
- Use heat-shrink tubes to insulate all soldered joints

4.4 Installation instructions

NOTICE

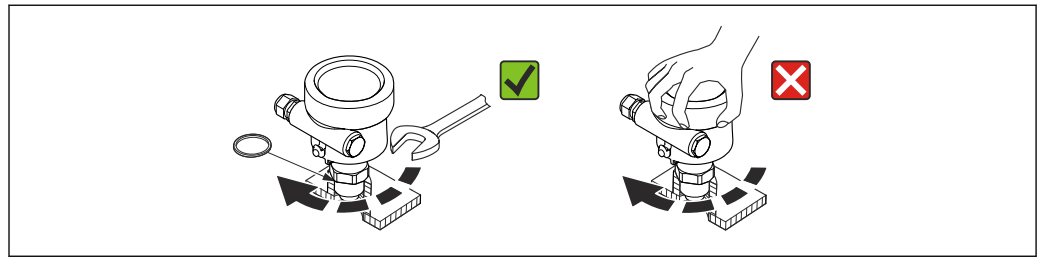
Do not damage the probe insulation during installation!

- Check the rope insulation.

NOTICE

Do not screw the probe using the probe housing!

- Use an open-end wrench to screw the probe.



A0040476

4.4.1 Probe installation

Probe with thread

Cylindrical threads $G\frac{1}{2}$, $G\frac{3}{4}$, $G1$, $G1\frac{1}{2}$

To be used with the elastomer fiber seal supplied or another chemically resistant seal. Make sure that the temperature resistance of a seal is correct.

i The following applies to probes with a parallel thread and supplied seal:

Thread $G\frac{1}{2}$

- for pressures up to 25 bar (362.5 psi): 25 Nm (18.4 lbf ft)
- maximum torque: 80 Nm (59.0 lbf ft)

Thread $G\frac{3}{4}$

- for pressures up to 25 bar (362.5 psi): 30 Nm (22.1 lbf ft)
- maximum torque: 100 Nm (73.8 lbf ft)

Thread $G1$

- for pressures up to 25 bar (362.5 psi): 50 Nm (36.9 lbf ft)
- maximum torque: 180 Nm (132.8 lbf ft)

Thread $G1\frac{1}{2}$

- for pressures up to 100 bar (1 450 psi): 300 Nm (221.3 lbf ft)
- maximum torque: 500 Nm (368.8 lbf ft)

Conical threads $\frac{1}{2}$ NPT, $\frac{3}{4}$ NPT, 1 NPT, $1\frac{1}{2}$ NPT

Wrap the thread with a suitable sealing material. Use conductive sealing material only.

Probe with Tri-Clamp, sanitary connection or flange

The process seal must meet the specifications of the application. Check the seal's resistance to temperature and medium.

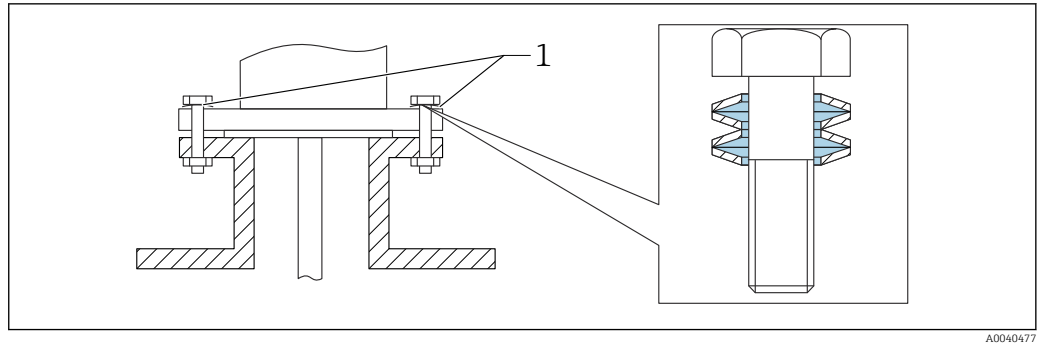
If the flange is PTFE-clad, this generally suffices as the seal up to the permitted operating pressure.

Probe with PTFE-clad flange

i Use spring washers!

Depending on process pressure and process temperature, check and re-tighten the screws at regular intervals.

Recommended torque: 60 to 100 Nm (44.3 to 73.8 lbf ft).

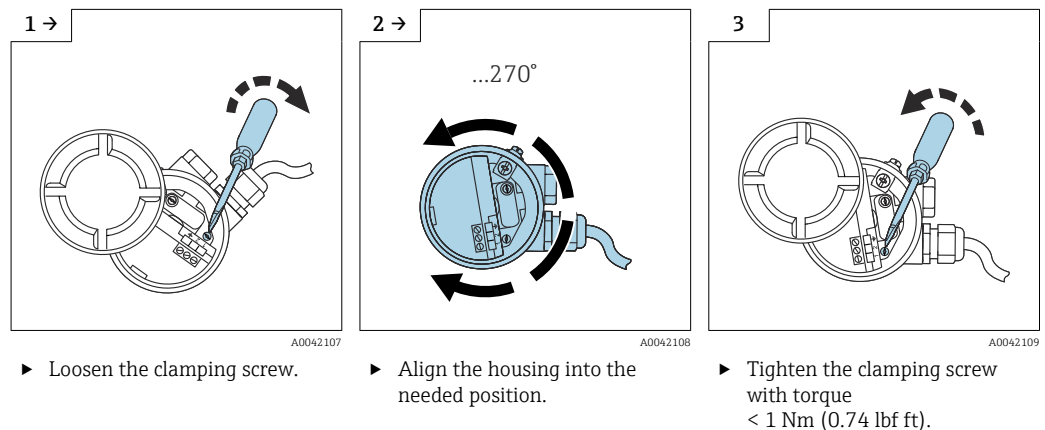


1 Spring washer

4.4.2 Aligning the housing

The housing can be rotated 270° to align with the cable entry. To prevent moisture penetration, route the connecting cable downwards in front of the cable gland and secure it with a cable tie. This is particularly recommended for outdoor mounting.

Aligning the housing



The clamping screw for aligning the housing type T13 is located in the electronics compartment.

4.4.3 Sealing the probe housing

Make sure that the cover is sealed. Water cannot enter into the device when performing installation, connection and configuration tasks. Always seal the housing cover and cable entries securely.

The O-ring seal on the housing cover is shipped with a coat of special lubricant applied. In this way, the cover can be sealed tight and the aluminum thread does not bite when screwing down.

Never use mineral oil-based grease as this destroys the O-ring.

4.5 Post-installation check

After installing the measuring device, carry out the following checks:

- ☐ Do a visual check for damages.
- ☐ Does the device meet the specifications at the measuring point with regard to process temperature and pressure, ambient temperature, measuring range?
- ☐ Has the process connection been tightened with the tightening torque?

- ☐ Check if the measuring points are correctly labeled.
- ☐ Is the device adequately protected against precipitation and direct sunlight?

5 Electrical connection



Before connecting the power supply, note the following:

- the supply voltage must match the data specified on the nameplate
- switch off the supply voltage before connecting the device
- connect the potential equalization to the ground terminal on the sensor



When using the probe in hazardous areas, the relevant national standards and the information in the safety instructions (XA) must be observed.

Use the specified cable gland only.

5.1 Connecting requirements

5.1.1 Potential equalization



Risk of explosion!

- Connect the cable screen on the sensor side only if installing the probe in Ex-areas!

Connect the potential equalization to the outer ground terminal of the housing (T13, F13, F16, F17, F27). In the case of the stainless steel housing F15, the ground terminal can also be located in the housing. For further safety instructions, please refer to the separate documentation for applications in hazardous areas.

5.1.2 Electromagnetic compatibility (EMC)

Interference emission to EN 61326, Electrical Equipment Class B. Interference immunity to EN 61326, Annex A (Industrial) and NAMUR Recommendation NE 21 (EMC).

Failure current is in accordance with NAMUR NE43: FEI50H = 22 mA.

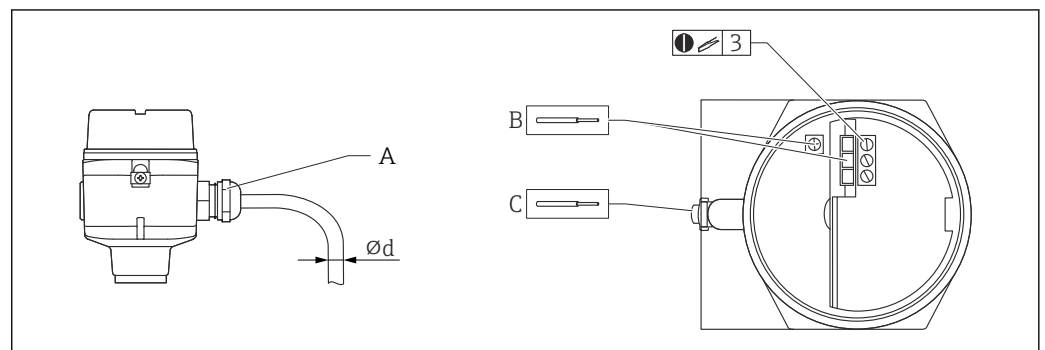
A standard commercial instrument cable can be used.



Information on connecting shielded cables is provided in Technical Information TI00241F "EMC test procedures".

5.1.3 Cable specification

Connect the electronic inserts by using commercially available instrument cables. If a potential equalization is present, and the shielded instrument cables are used, connect the shielding on both sides to optimize the shielding effect.



A0040478

A Cable entry

B Electronic insert connections: cable size max. 2.5 mm² (14 AWG)

C The ground connection outside the housing, cable size max. 4 mm² (12 AWG)

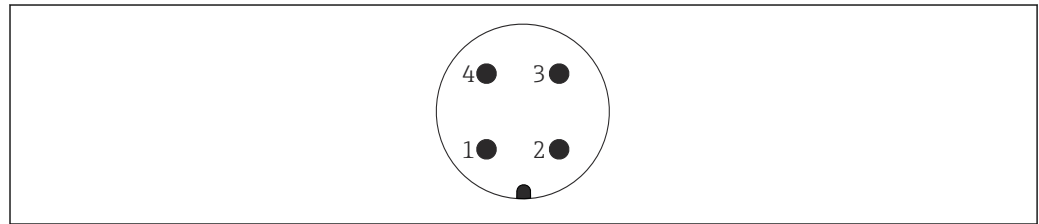
Ød Cable diameter

Cable entries

- Nickel-plated brass: $\varnothing d = 7$ to 10.5 mm (0.28 to 0.41 in)
- Synthetic material: $\varnothing d = 5$ to 10 mm (0.2 to 0.38 in)
- Stainless steel: $\varnothing d = 7$ to 12 mm (0.28 to 0.47 in)

5.1.4 Connector

For the version with a connector M12, the housing does not have to be opened for connecting the signal line.

PIN assignment for M12 connector

A0011175

- 1 Positive potential
- 2 Not used
- 3 Negative potential
- 4 Ground

5.1.5 Supply voltage

All of the following voltage is terminal voltage directly at the device:

14.8 V_{DC} from associated supply unit

5.2 Wiring and connecting**5.2.1 Connection compartment**

Depending on explosion protection, the connection compartment is available in the following variants:

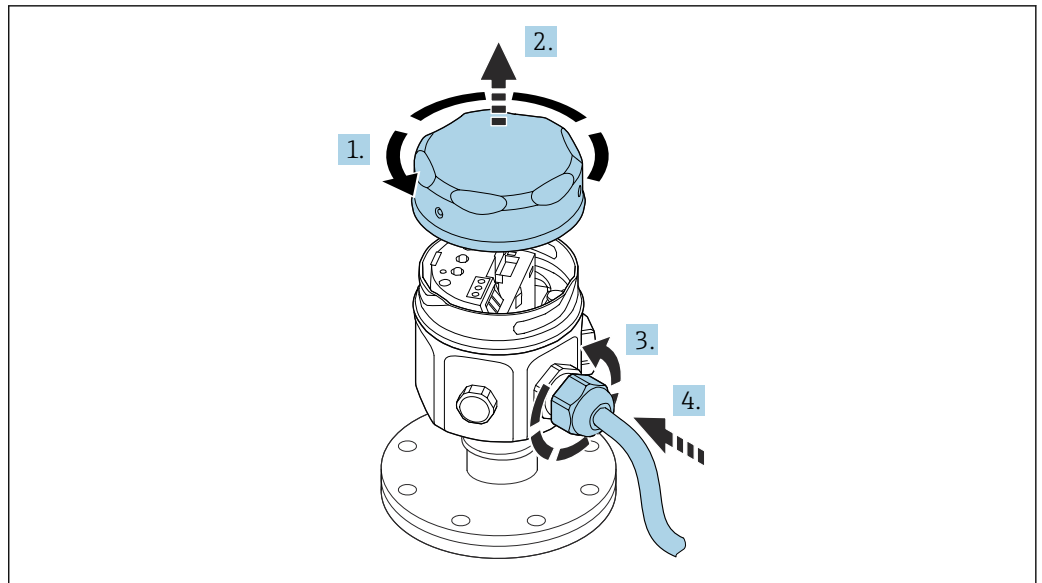
Standard protection, Ex ia protection

- polyester housing F16
- stainless steel housing F15
- aluminum housing F17
- aluminum housing F13 with gas-tight process seal
- stainless steel housing F27
- aluminum housing T13, with the separate connection compartment

Ex d protection, Gas-tight process seal

- aluminum housing F13 with gas-tight process seal
- stainless steel housing F27 with gas-tight process seal
- aluminum housing T13, with the separate connection compartment

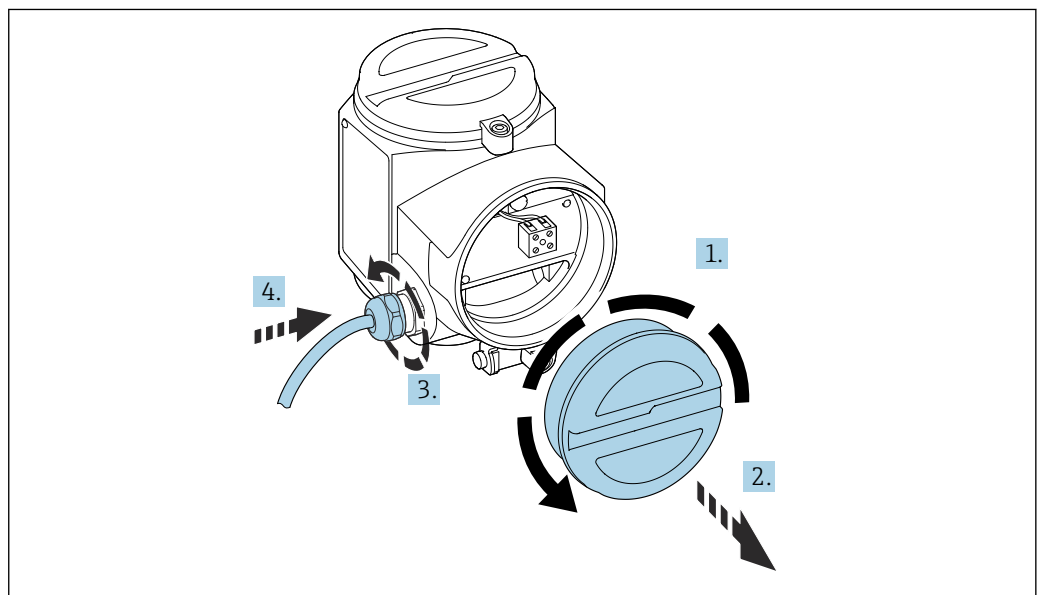
Connecting the electronic insert to the power supply:



A0040635

1. Unscrew the housing cover.
2. Remove the housing cover.
3. Release the cable gland.
4. Insert the cable.

Connecting the electronic insert to the power supply mounted in the housing T13:



A0040637

1. Unscrew the housing cover.
2. Remove the housing cover.
3. Release the cable gland.
4. Insert the cable.

5.2.2 Cable entry

Cable gland: M20x1.5 Cable entry: G ½ or NPT ½, NPT ¾

5.2.3 Supply voltage

14.8 V_{DC} from associated supply unit

5.2.4 Power consumption

Approximately 150 mW


5.2.5 Current consumption

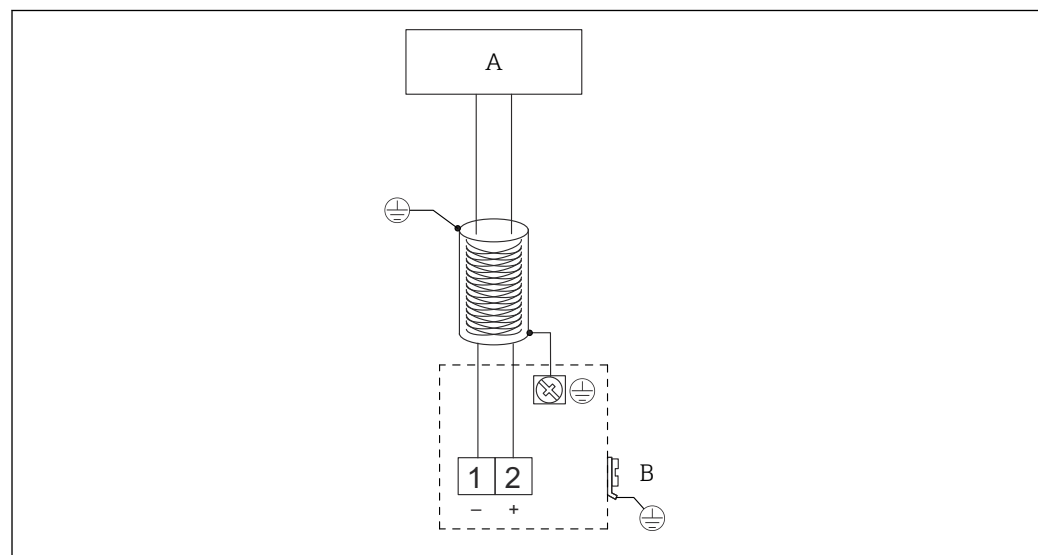
Maximum 10 mA.

5.2.6 Terminal assignment

2-wire, PFM

The twin-core, shielded connecting cable with a cable resistance of max. 25 Ω per core is connected to the screw terminals (conductor cross-section 0.5 to 2.5 mm (0.02 to 0.1 in)) in the connection compartment.

 The shielding must be connected at the sensor and power supply. Protective circuits against reverse polarity, HF influences and overvoltage peaks are integrated, for more information see document "EMC test procedures" TI00241F.



A0040776

A Switching unit

B Grounding terminal

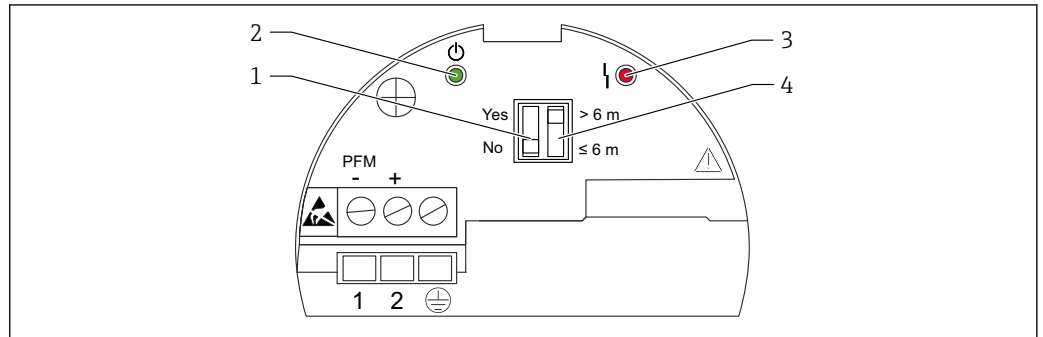
5.3 Post-connection check

After wiring the measuring device, carry out the following checks:

- ☐ Is the terminal assignment correct?
- ☐ Is the cable gland sealed tight?
- ☐ Is the housing cover fully screwed?
- ☐ Is the device operational and is the green LED flashing when the device is on?

6 Operation options

6.1 Display and operating elements



A0040775

- 1 Two-position DIP switch "Build up"
- 2 Green LED - operational status
- 3 Red LED - fault
- 4 Two-position DIP switch "Probe length"



Elements description

- Two-position DIP switch "Build up" (1):
 - YES: setting is recommended for media that cause heavy buildup, e.g. honey
 - NO: setting is recommended for media that do not cause buildup, e.g. water
- Green LED - operational status (2):
 - indicates that the device is ready for operation when flashes every 5 s
- Red LED - fault (3)
 - flashes 5x a second - Alarm
 - The PFM output signalized an error current signal and sets the output of the connected switching unit to 3.6 mA or 22 mA. The switching unit outputs an alarm itself.
 - flashes 1x a second - Warning
 - The temperature in the electronic insert is outside the permitted temperature range.
- Two-position DIP switch "Probe length" (4):
 - probe length ≤ 6 m (20 ft): measuring range 0 to 2 000 pF
 - probe length > 6 m (20 ft): measuring range 0 to 4 000 pF

7 Commissioning

7.1 Function check

Make sure that the post-installation check and final check have been completed before you start your measuring point:

- the "Post-installation check" checklist →  11
- the "Post-connection check" checklist →  23

7.2 Transmitter



The settings on the electronic insert affect the function of the switching unit.
For further commissioning, please refer to the Operating Instructions of the transmitter power supply unit.

The device documentation of these devices is also available for download at www.endress.com -> Download -> e.g. product root: FMX570.

8 Diagnostics and troubleshooting

8.1 Diagnostic information via LEDs



The operating status of the device is indicated by the LEDs on the electronic insert.

8.1.1 Green LED is not flashing

The green LED indicates operation.

If the green LED is not flashing:

- check terminal assignment between supply unit and the electronic insert
- check supply voltage to supply unit
- check the installation state of the electronic insert

8.1.2 Red LED flashing

The red LED flashes 1x a second:

the temperature in the electronic insert is outside the permitted temperature range

The red LED flashes 5x a second:

- the PFM output frequency is 3 210 Hz
the measuring range exceeded -> the capacitance too high at the probe
- the PFM output frequency is 3 200 Hz
faulty probe insulation, the measuring range exceeded -> probe generates a short-circuit
- the PFM output frequency is 3 100 to 3 190 Hz
the temperature in the electronic insert is outside the permitted temperature range

8.2 Application errors

Error

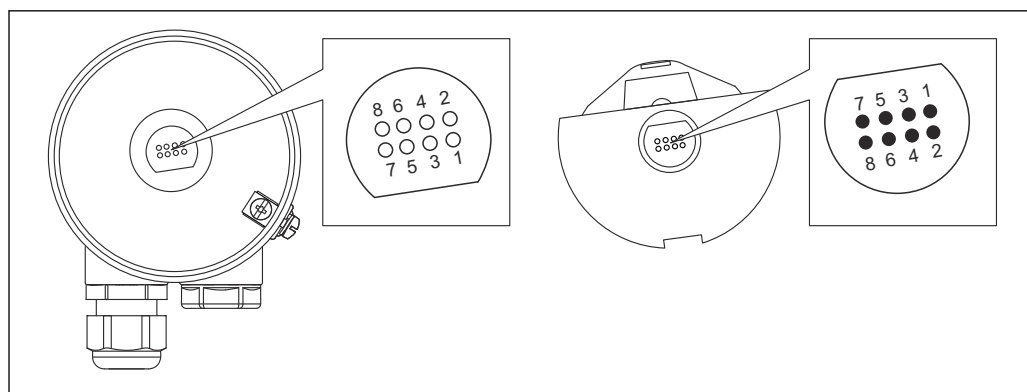
- the buildup on the probe causes the measuring error
set the DIP switch "Build up" to position "YES"
- the measuring range is too high
set the DIP switch for the probe length to the setting >6 m (20 ft)

8.3 Possible measuring errors

8.3.1 Measured value is incorrect

If the measured values are incorrect, follow this procedure:

1. Verify empty and full calibration.
2. Clean the probe.
3. Verify the probe.
4. Change the installation position. Do not mount the probe in a filling curtain.
5. Check ground from process connection to the tank wall. Resistance measurement must be < 1 Ω.
6. For conductive media, check the probe insulation. Resistance measurement must be > 800 kΩ.
7. Increase the response time, if the surface is turbulent.



A0040621

8 Electronic insert contacts

- 1 Guard
- 2 SDA_TXD
- 3 GND
- 4 GND EEPROM
- 5 GND
- 6 DVCC 3 V_{DC}
- 7 Probe
- 8 SCL_RXD

8.4 Firmware history

Firmware V 01.00.00 / 06.2005

Updates:
original software

Hardware V 01.00

Updates:
No updates

9 Maintenance

No special maintenance work is required for the Liquicap M level transmitter.

9.1 External cleaning

Do not use a corrosive or aggressive cleaning agent to clean the housing surface and seals.

9.2 Cleaning the probe

Depending on the application, buildup of contamination or soiling can form on the probe rope. A high level of material buildup can affect the measurement result.

The regular cleaning of the probe rope is recommended if the medium tends to create a high level of buildup.

Make sure that the insulation of the probe rope is not damaged if hosing down or during mechanical cleaning.

Make sure that the probe rope insulation is resistant to cleaning agents.

9.3 Seals

The process seals of the sensor must be replaced periodically, especially when using molded aseptic seals!

The intervals between seal replacement depend on the frequency of the cleaning cycles and on the fluid and cleaning temperature.

9.4 Endress+Hauser services

Endress+Hauser offers a wide range of services.



Your Endress+Hauser Sales Center can provide detailed information on the services.

10 Repair

10.1 General notes

The Endress+Hauser repair and conversion concept provides the following:

- The measuring devices have a modular design.
- Spare parts are grouped into logical kits with the associated Installation Instructions.
- Repairs are carried out by Endress+Hauser Service or by appropriately trained customers.
- Certified devices can only be converted to other certified devices by Endress+Hauser Service or at the factory.

10.2 Spare parts

Find spare parts

Check whether it is possible to use the spare part for the measuring device.

1. Launch the Endress+Hauser Device Viewer via a web browser:
www.endress.com/deviceviewer
2. Enter the order code or the product root in the respective field.
 - ↳ Once the order code or the product root has been entered, all the suitable spare parts are listed.
 - The product status is displayed.
 - Available drawings of the spare parts are displayed.
3. Locate the order code of the spare part set (on the product label on the package).
 - ↳ **NOTE!**
The order code of the spare part set (on the product label on the package) can differ from the production number (on the label directly on the spare part)!
4. Check whether the order code of the spare part set appears in the list of the spare parts displayed:
 - ↳ **YES:** The spare part set may be used for the measuring device.
 - NO:** The spare part set may not be used for the measuring device.
 - If you have any questions please contact your Endress+Hauser Service organization.
5. On the **Spare parts** tab click the PDF symbol in the **MH** column.
 - ↳ The Installation Instructions attached to the listed spare part are opened as a PDF file and can also be saved as a PDF file.
6. Click one of the drawings shown on the **Spare part drawings** tab.
 - ↳ The corresponding exploded drawing is opened as a PDF file and can also be saved as a PDF file.

10.3 Repairing Ex-certified devices

If repairing Ex-certified devices remember that:

- Ex-certified devices may only be repaired by experienced and skilled staff or by Endress+Hauser Service
- observe all applicable standards, certificates, national Ex-area regulations and all Safety Instructions (XA)
- use only genuine spare parts from Endress+Hauser
- note the device designation on the nameplate to order the spare parts
- replace the component by the same type
- carry out the replacing in accordance with the instructions

- carry out the individual test for the device
- change the device only with a device certificated by Endress+Hauser
- report every change and repair of the device

10.4 Return

The requirements for safe device return can vary depending on the device type and national legislation.

1. Refer to the website for more information:
<http://www.endress.com/support/return-material>
2. Return the device if repairs or a factory calibration are required, or if the wrong device was ordered or delivered.

10.5 Disposal

10.5.1 Removing the measuring device

1. Switch off the device.

WARNING

Danger to personnel from process conditions.

- ▶ Beware of hazardous process conditions such as pressure in the measuring device, high temperatures or aggressive fluids.
2. Carry out the mounting and connection steps from the "Mounting the measuring device" and "Connecting the measuring device" sections in reverse order. Observe the safety instructions.

10.5.2 Disposing of the measuring device

WARNING

Danger to personnel and environment from fluids that are hazardous to health.

- ▶ Ensure that the measuring device and all cavities are free of fluid residues that are hazardous to health or the environment, e.g. substances that have permeated into crevices or diffused through plastic.

Observe the following notes during disposal:

- ▶ Observe valid federal/national regulations.
- ▶ Ensure proper separation and reuse of the device components.

10.6 Replacement

After replacing a Liquicap M or the electronic insert, the calibration values must be transferred to the replacement device.

Options:

- if the probe is replaced, the calibration values in the electronic insert can be transferred to the sensor DAT (EEPROM) module via a manual download
- if the electronic insert is replaced, the calibration values of the sensor DAT (EEPROM) module can be transferred to the electronics via a manual upload

11 Accessories

11.1 Protective cover

Protective cover for F13, F17 and F27 housing
order number: 71040497

Protective cover for F16 housing
order number: 71127760

11.2 Shortening set for FMI52

Shortening set for Liquicap M FMI52.
Order number: 942901-0001

11.3 Surge arresters

11.3.1 HAW562



- For supply lines: BA00302K.
- For signal lines: BA00303K.

11.3.2 HAW569



- For signal lines in field housing: BA00304K.
- For signal or supply lines in field housing: BA00305K.

11.4 Weld-in adapter

All available weld-in adapters are described in the document TI00426F.

The documentation is available in the Download section on Endress+Hauser web site:
www.endress.com

12 Technical data

12.1 Probe

12.1.1 Capacitance values of the probe

The basic capacitance of the probe is approximately 18 pF.

12.1.2 Additional capacitance

Mount the probe at a minimum distance of 50 mm (1.97 in) from a conductive container wall:

approximately 1.0 pF/100 mm (3.94 in) in the air for a rope probe

Fully insulated probe rope in water:

approximately 19 pF/100 mm (3.94 in)

12.1.3 Probe lengths for continuous measurement in conductive liquids

The maximum length of the rope probe is:

- < 6 m (20 ft) for capacitive range 0 to 2 000 pF.
- > 6 m (20 ft) for capacitive range 0 to 4 000 pF.

12.2 Input

12.2.1 Measured variable

Continuous measurement of change in capacitance between the probe rod and container wall or ground tube, depending on the level of a liquid.

The probe covered -> high capacitance.

The probe not covered -> low capacitance.

12.2.2 Measuring range

- measuring frequency:
500 kHz
- span ΔC
 - recommended: 25 to 4 000 pF
 - possible: 2 to 4 000 pF
- final capacitance C_E :
max. 4 000 pF
- adjustable initial capacitance C_A :
 - < 6 m (20 ft) 0 to 2 000 pF
 - > 6 m (20 ft) 0 to 4 000 pF

12.3 Output

12.3.1 Output signal

FEI57C (PFM output)

The transmitter superimposes current pulses (PFM signal 60 to 2 800 Hz) with a pulse width of approximately 100 µs and a current strength of approximately 8 mA on the supply current.

12.3.2 Signal on alarm

Fault diagnosis can be called up via:

- Red LED on the local display
- Local display at switching unit

12.3.3 Linearization

Linearization is performed in the transmitters.

12.4 Performance characteristics

12.4.1 Reference operating conditions

Room temperature:

+20 °C (+68 °F) ±5 °C (±8 °F)

Span:

- standard measuring range
5 to 2 000 pF
- extended measuring range
5 to 4 000 pF
- span for reference - corresponds to approximately 1 m (3.3 ft) probe length
5 to 4 000 pF

12.4.2 Maximum measured error

Non-repeatability (reproducibility) as per DIN 61298-2:
maximum ±0.1 %

Non-linearity for limit point setting (linearity) as per DIN 61298-2:
maximum ±0.5 %

12.4.3 Influence of ambient temperature

Electronic insert

< 0.06 %/10 K related to the full-scale value

Separate housing

change in capacitance of connecting cable 0.015 pF / m per K

12.4.4 Switch-on behavior

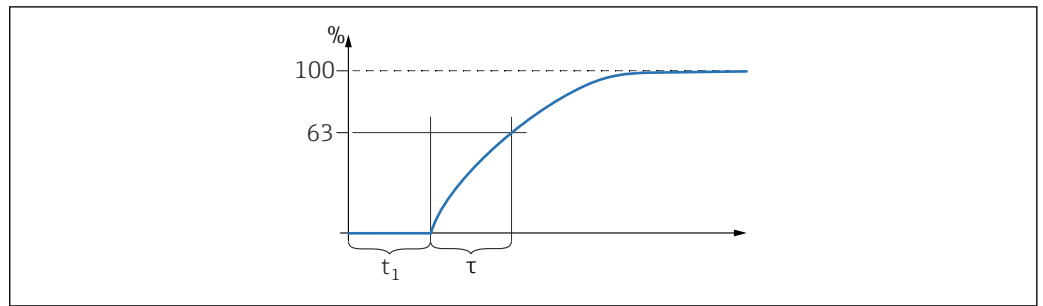
1.5 s stable measured value after switch-on procedure, start-up in safe status 22 mA

12.4.5 Measured value reaction time



Observe time constant of switching unit.

$$t_1 = 0.3 \text{ s}$$



A0040622

τ Time constant
 t_1 Dead time

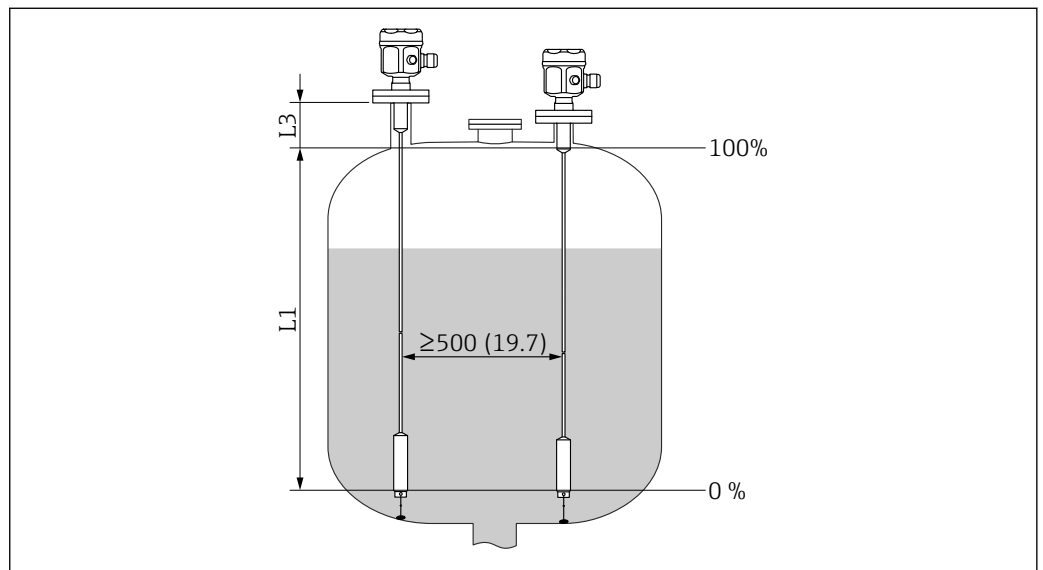
12.4.6 Accuracy of factory calibration

Empty calibration (0 %) and full calibration (100 %):

- probe length < 2 m (6.6 ft)
 ≤ 5 mm (0.2 in)
- probe length > 2 m (6.6 ft)
 approximately ≤ 2 %

Reference conditions for the factory calibration:

- medium conductivity ≥ 100 μS/cm
- minimum distance to tank wall = 250 mm (9.84 in)



A0040579

Unit of measurement mm (in)

L1 Measuring range from the tip of the probe to the process connection

L3 The inactive length



In an installed state, recalibration is only necessary when:

- the 0 % or the 100 % values have to be adjusted specifically for the customer
- the liquid is not conductive
- the probe distance to the tank wall is < 250 mm (9.84 in)

12.4.7 Resolution

Zero frequency $f_0 = 60 \text{ Hz}$

- sensitivity of the electronic insert = 0.685 Hz/pF
- entry in switching unit FMC671 under V3H5 and V3H6 or V7H5 and V7H6

12.5 Operating conditions: Environment

12.5.1 Ambient temperature range

- F16 housing: -40 to $+70 \text{ °C}$ (-40 to $+158 \text{ °F}$)
- remaining housing: -50 to $+70 \text{ °C}$ (-58 to $+158 \text{ °F}$)
- observe derating
- use a protective cover, when operating outdoors

12.5.2 Climate class

DIN EN 60068-2-38/IEC 68-2-38: Z/AD check

12.5.3 Vibration resistance

DIN EN 60068-2-64/IEC 68-2-64: 20 to 2 000 Hz, $0.01 \text{ g}^2/\text{Hz}$

12.5.4 Shock resistance

DIN EN 60068-2-27/IEC 68-2-27: 30g acceleration

12.5.5 Cleaning

Housing:

Make sure that the housing surface and seals are resistant to cleaning agents.

Probe:

Depending on the application, buildup of contamination or soiling can form on the rope. A high level of material buildup can affect the measurement result.

The regular cleaning of the rope is recommended if the medium tends to create a high level of buildup.

Make sure that the insulation of the rope is not damaged if hosing down or during mechanical cleaning.

12.5.6 Degree of protection



All protection degree regarding EN60529.

NEMA4X protection degree regarding NEMA250.

Polyester housing F16

Protection degree:

- IP66
- IP67
- NEMA 4X

Stainless steel housing F15

Protection degree:

- IP66
- IP67
- NEMA 4X

Aluminum housing F17

Protection degree:

- IP66
- IP67
- NEMA 4X

Aluminum housing F13 with gas-tight process seal

Protection degree:

- IP66
- IP68 ²⁾
- NEMA 4X

Stainless steel housing F27 with gas-tight process seal

Protection degree:

- IP66
- IP67
- IP68 ²⁾
- NEMA 4X

Aluminum housing T13 with gas-tight process seal and separate connection compartment (Ex d)

Protection degree:

- IP66
- IP68 ²⁾
- NEMA 4X

Separate housing

Protection degree:

- IP66
- IP68 ²⁾
- NEMA 4X

12.5.7 Electromagnetic compatibility (EMC)

Interference emission to EN 61326, Electrical Equipment Class B. Interference immunity to EN 61326, Annex A (Industrial) and NAMUR Recommendation NE 21 (EMC).

Failure current is in accordance with NAMUR NE43: FEI50H = 22 mA.

A standard commercial instrument cable can be used.



Information on connecting shielded cables is provided in Technical Information TI00241F "EMC test procedures".

12.6 Operating conditions: Process**12.6.1 Process temperature range**

The following diagrams apply for:

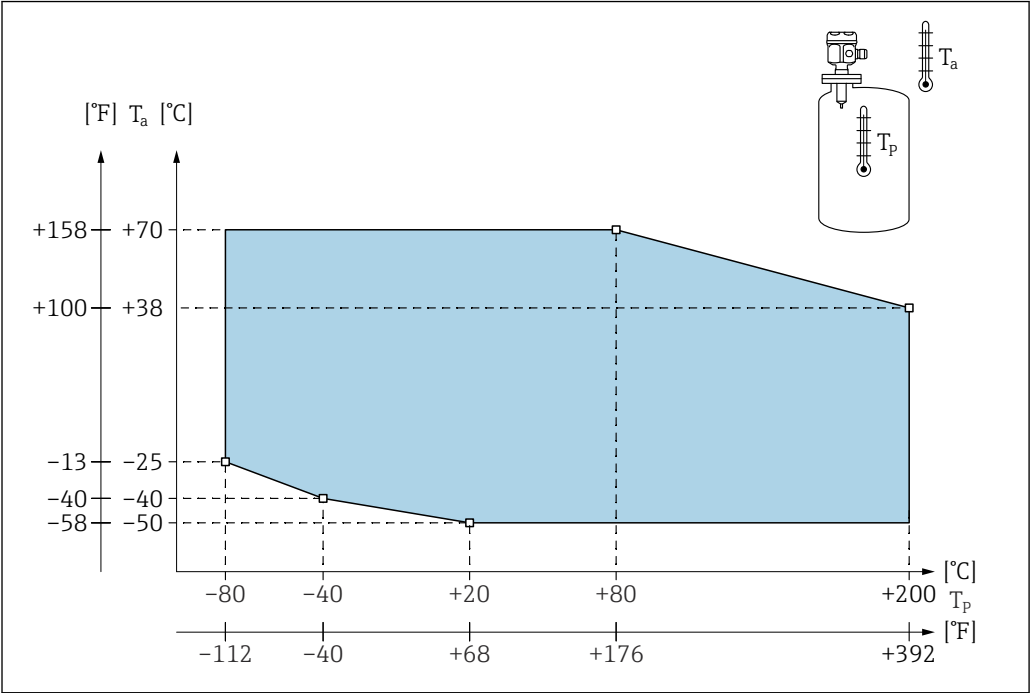
- insulation
 - PTFE
 - PFA
 - FEP
- standard applications outside hazardous areas



The temperature is restricted to $T_a -40\text{ °C}$ (-40 °F) when the polyester housing F16 is used or if additional option B is selected: free from paint-wetting impairment substances, only FMI51.

2) Only with M20 cable entry or G½ thread.

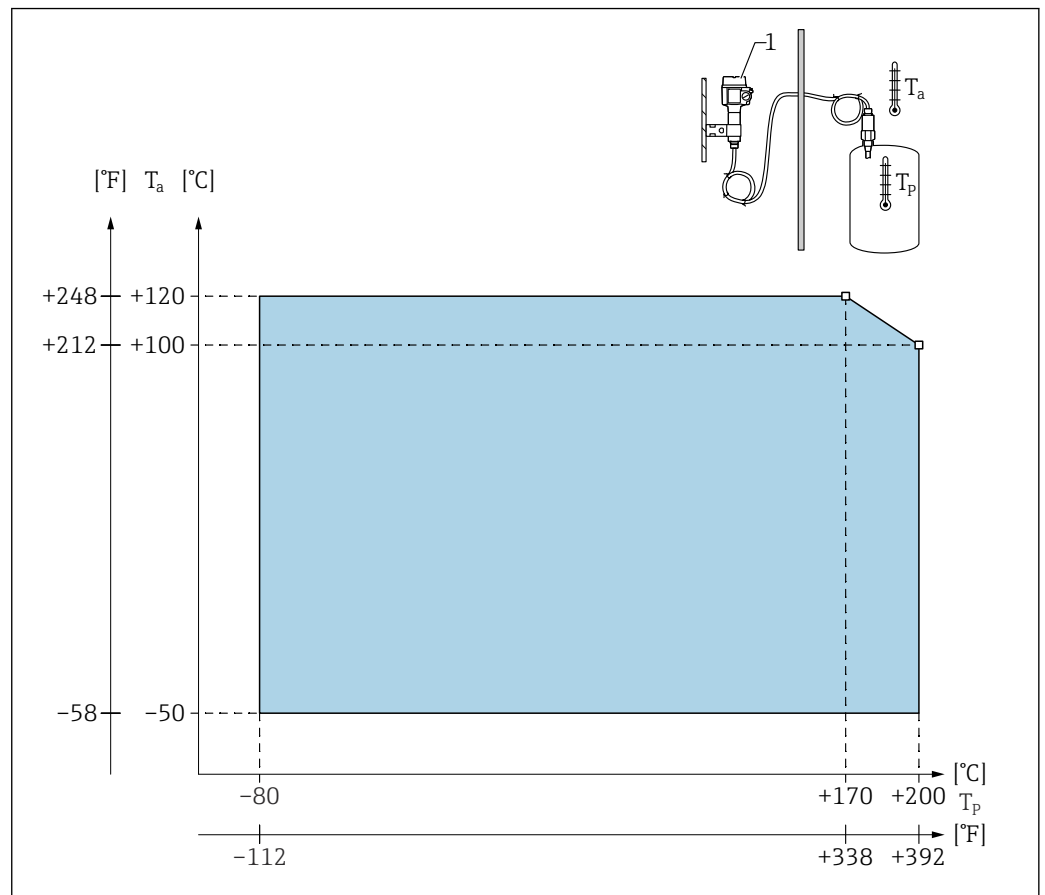
Probe with compact housing



A0043638

T_a Ambient temperature
 T_p Process temperature

Probe with separate housing



A0043639

T_a Ambient temperature

T_p Process temperature

1 The permitted ambient temperature at the separate housing is the same as indicated for the compact housing.

Influence of process temperature

Error in case of fully insulated probes typically 0.13 %/K related to the full-scale value.

12.6.2 Process pressure limits



The process pressure limits depends on process connections.



See also chapter "Process connections" in TI01521F.

Rope probe without inactive length or with inactive length in 316L



E+H Configurator settings:

- Feature: 20
- Options: 1, 2, 5
- -1 to 25 bar (-14.5 to 362.5 psi)
- -1 to 100 bar (-14.5 to 1450 psi)
- in regards to an inactive length, the maximum permitted process pressure is 63 bar (913.5 psi)
- for CRN approval and inactive length: the maximum permitted process pressure is 32 bar (464 psi)

Rope probe with fully insulated inactive length

i E+H Configurator settings:

- Feature: 20
- Options: 3, 6

–1 to 50 bar (–14.5 to 725 psi)

Refer to the following standards for the pressure values permitted at higher temperatures:

- EN 1092-1: 2005 Table, Appendix G2
With regard to its resistance and temperature property, the material 1.4435 is identical to 1.4404 (AISI 316L) which is grouped under 13E0 in EN 1092-1 Tab. 18. The chemical composition of the two materials can be identical.
- ASME B 16.5a - 1998 Tab. 2-2.2 F316
- ASME B 16.5a - 1998 Tab. 2.3.8 N10276
- JIS B 2220

The lowest value from the derating curves of the device and the selected flange applies.

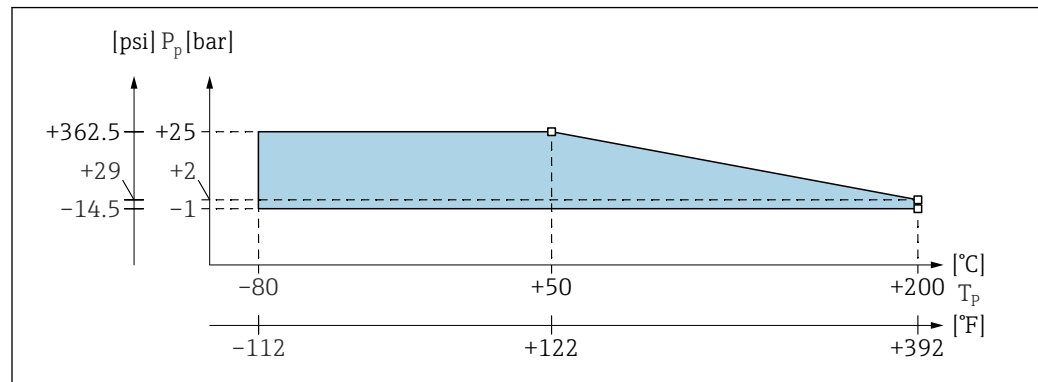
12.6.3 Pressure and temperature derating

For rope probes without inactive length or with inactive length in 316L, process connections ¾", 1", flanges <DN50, <ANSI 2", <JIS 10K and process connections ¾", 1", flanges <DN50, <ANSI 2", <JIS 10K

Rope insulation: FEP, PFA

i E+H Configurator settings:

- Feature: 20
- Options: 1, 2, 5



A0043640

P_p Process pressure
 T_p Process temperature

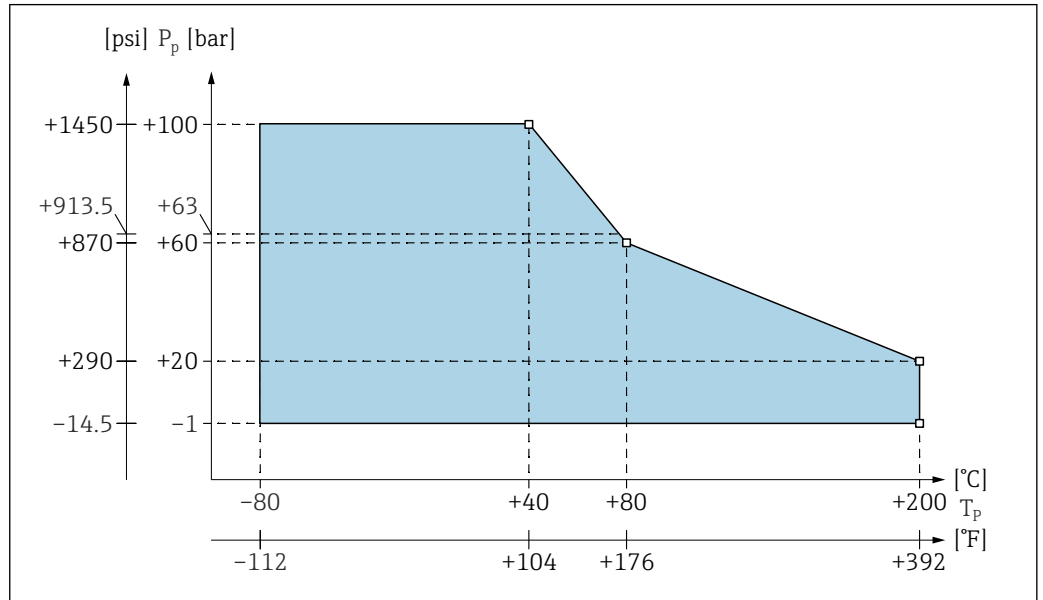
For rope probes without inactive length or with inactive length in 316L, process connections 1½", flanges ≥DN50, ≥ANSI 2", ≥JIS 50A

Rope insulation: FEP, PFA



E+H Configurator settings:

- Feature: 20
- Options: 1, 2, 5



A0043641

P_p Process pressure

T_p Process temperature

63 Process pressure for probes with an inactive length

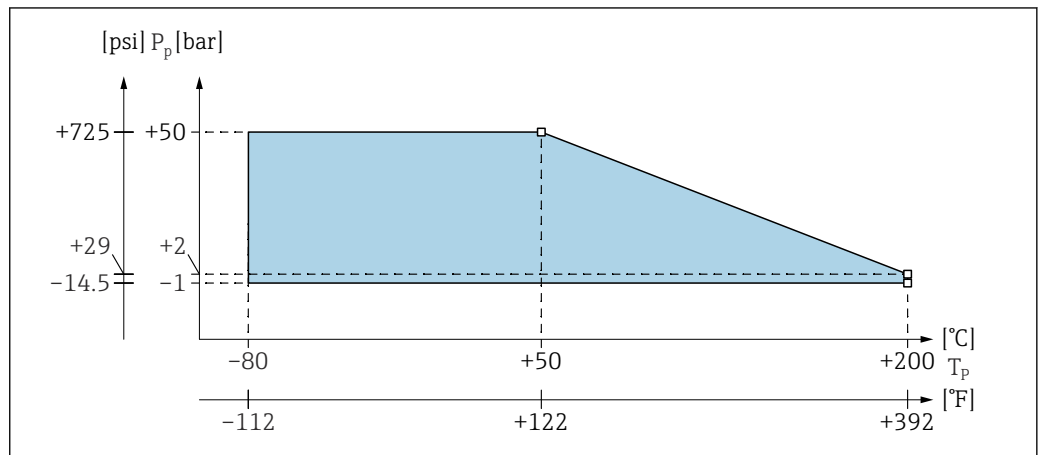
For rope probe with a fully insulated inactive length

Rope insulation: FEP, PFA



E+H Configurator settings:

- Feature: 20
- Options: 3, 6



A0043642

P_p Process pressure

T_p Process temperature

Index

A

About this document	5
Accessories	34
Accuracy of factory calibration	37
Additional capacitance	35
Aligning the housing	21
Ambient temperature range	38
Application errors	29

B

Basic safety instructions	9
---------------------------	---

C

Cable specification	23
Capacitance values of the probe	35
CE mark	9
Certificates	7
Cleaning the probe	31, 38
Climate class	38
Commissioning	28
Conical threads	20
Connecting requirements	23
Connection compartment	24
Connector	24
Cylindrical threads	20

D

Declaration of Conformity	9
Degree of protection	38
Diagnostic and troubleshooting	29
Diagnostic information	
via LEDs	29
Display and operating elements	27
Disposal	33
Document	
Function	5
Document conventions	5
Document function	5
Documentation	7

E

Electrical connection	23
Electromagnetic compatibility	23, 39
Endress+Hauser services	
Repair	31
Environment	38
Ex-area	
Explosive area	9
Extension heights: separate housing	15
External cleaning	31

F

Firmware history	30
Function check	28

G

Green LED	
is not flashing	29

H

Hygienic compatibility	8
------------------------	---

I

Incoming acceptance	10
Influence of ambient temperature	36
Input	35
Installation examples	13
Installation instructions	19

L

Linearization	36
---------------	----

M

M12 connector	24
Maintenance	31
Maximum	
measured error	36
Measured value is incorrect	29
Measured value reaction time	36
Measured variable	35
Measuring condition	12
Measuring device	
Conversion	32
Disposal	33
Removing	33
Repairs	32
Measuring range	35
Minimum probe length for nonconductive media	12
Mounting	11
Mounting requirements	11
Mounting the sensor	11

O

Operating conditions	38
Operating conditions: Process	39
Operation options	27
Operational safety	9
Output	36
Output signal	36

P

Performance characteristics	36
Pipe mounting	17
Possible measuring errors	29
Post-connection check	26
Post-installation check	21
Potential equalization	23
Pressure and temperature derating	42
Probe installation	20
Probe length	35
Probe with PTFE-clad flange	20
Probe with separate housing	15

Probe with Tri-Clamp	20
Process pressure limits	41
Process temperature range	39
Product identification	10
Product safety	9
Protective cover	34

Q

Quick installation guide	11
------------------------------------	----

R

Red LED	
flashing	29
Reference operating conditions	36
Registered trademarks	8
Repair	32
Repairing Ex-certified devices	32
Replacement	33
Device components	32
Requirements for the personnel	9
Resolution	38
Return	33

S

Sealing the probe housing	21
Seals	31
Shock resistance	38
Shortening set	
for FMI52	34
Shortening the connecting cable	18
Signal on alarm	36
Spare parts	32
Storage	10
Supply voltage	24
Surge arrester	34
Switch-on behavior	36
Symbols for certain types of information and graphics	6

T

Technical data	35
Technical data: probe	35
Technical Information	7
Transmitter	28
Transport	10

V

Vibration resistance	38
--------------------------------	----

W

Wall bracket	16
Wall mounting	17
Weld-in adapter	34
Wiring and connecting	24
Workplace safety	9



www.addresses.endress.com
