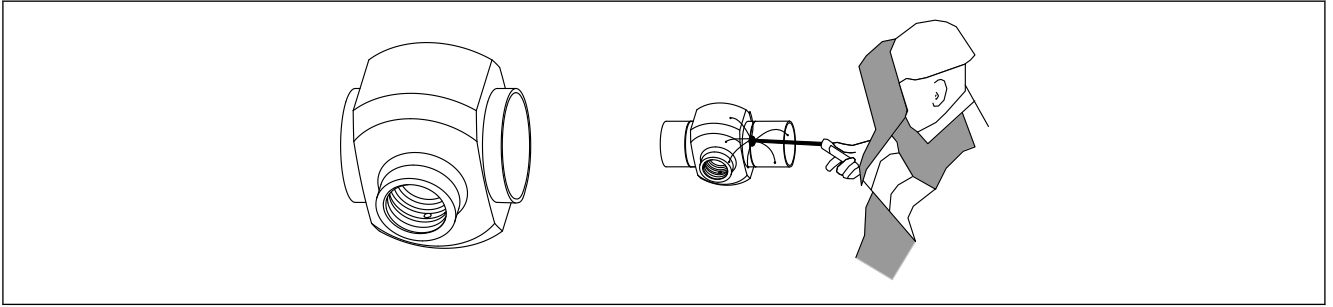




# Special Documentation

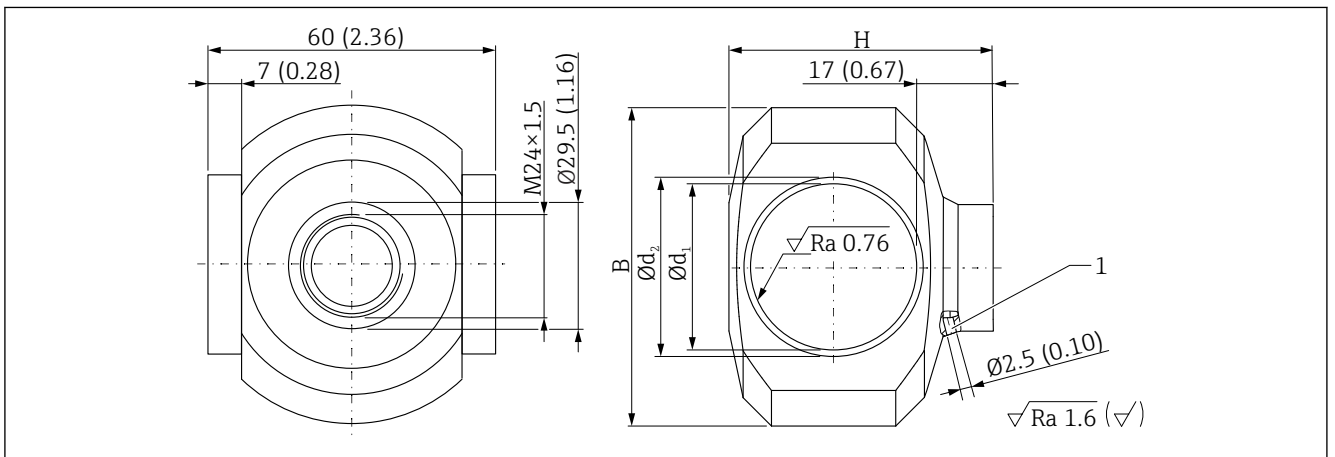
## Weldable pipe connection, flush mount for devices with M24 process connection

Accessories



A0042267

### Dimensions



A0042275

Unit of measurement mm (in)

1 Leakage hole

Version	DN25	DN32	DN40	DN50
Part number	71477801	71477803	71477807	71477808
B:	67 mm (2.64 in)	70 mm (2.56 in)	73 mm (2.87 in)	81 mm (3.19 in)
H:	48 mm (1.89 in)	54 mm (2.13 in)	60 mm (2.36 in)	72 mm (2.83 in)
Ø d <sub>1</sub>	26 mm (1.02 in)	32 mm (1.26 in)	38 mm (1.50 in)	50 mm (2.00 in)
Ø d <sub>2</sub>	29 mm (1.14 in)	35 mm (1.34 in)	41 mm (1.61 in)	53 mm (2.09 in)
Material	316L (1.4404)	316L (1.4404)	316L (1.4404)	316L (1.4404)

## Specifications according to PED, Rev. 01

Pipe adapter, classified according to PED (EU) 2014/68, Article 4, paragraph 3.

### Standard

Pipe: DIN 11866 series A

### MWP (Maximum Working Pressure)

The maximum process pressure depends on the temperature.

The following specifications relate to a reference temperature of 20 °C (68 °F).

#### DN25 version

MWP 26 bar (377 psi) for gases in fluid group 2

#### DN32 version

MWP 26 bar (377 psi) for gases in fluid group 2

#### DN40 version

- MWP 20 bar (290 psi) for gases in fluid group 2
- MWP 26 bar (377 psi) for liquids in fluid group 1

#### DN50 version

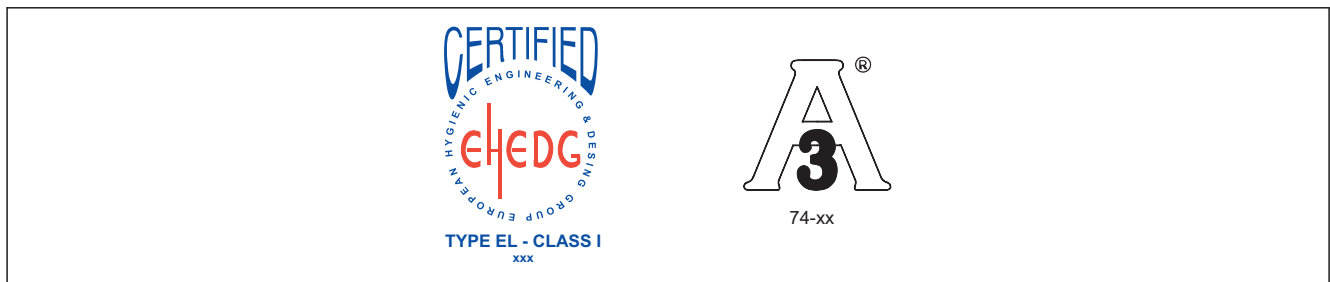
- MWP 20 bar (290 psi) for gases in fluid group 2
- MWP 26 bar (377 psi) for liquids in fluid group 1

### Process temperature range

- -40 to +130 °C (-40 to +266 °F)
- For a maximum of 30 min: 130 to 150 °C (266 to 302 °F) (e.g. SIP cleaning)

### Certification

EHEDG and 3-A



A0041353

### Address

Endress+Hauser SE+Co. KG  
Hauptstraße 1  
79689 Maulburg, Germany