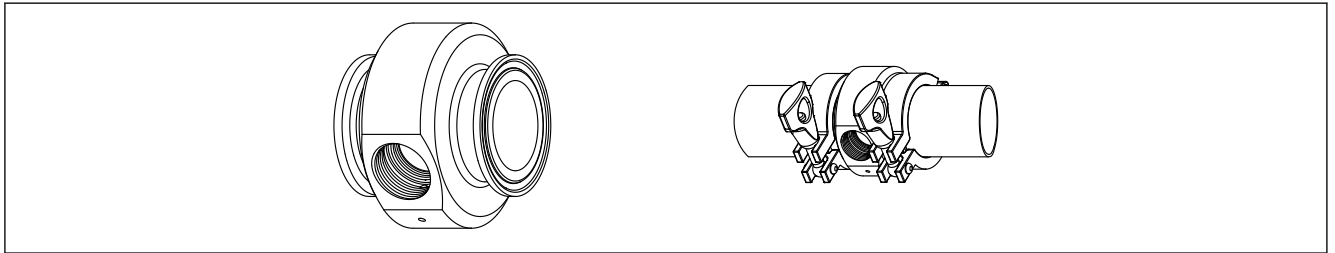




Special Documentation

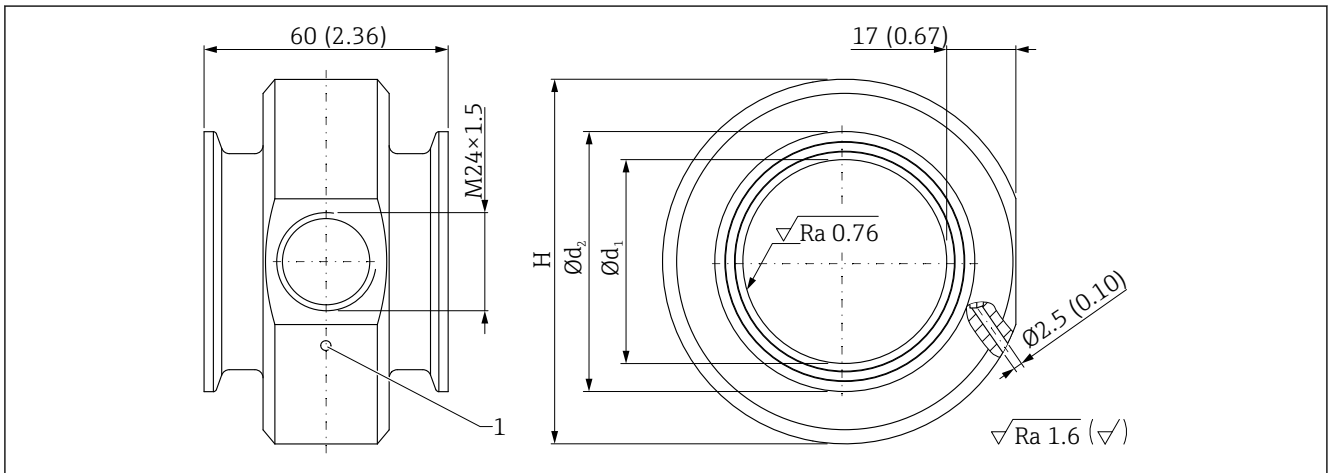
Pipe connection clamp, flush mount for devices with M24 process connection

Accessories



A0042360

Dimensions



A0042361

Unit of measurement mm (in)

1 Leakage hole

Version	DN25	DN32	DN40	DN50
Part number	71477812	71477813	71477816	71477817
H:	68 mm (2.68 in)	73 mm (2.87 in)	78.5 mm (3.09 in)	90 mm (3.54 in)
Ø d ₁	26 mm (1.02 in)	32 mm (1.26 in)	38 mm (1.50 in)	50 mm (2.00 in)
Ø d ₂	50 mm (1.97 in)	50 mm (1.97 in)	50 mm (1.97 in)	64 mm (2.52 in)
Material	316L (1.4404)	316L (1.4404)	316L (1.4404)	316L (1.4404)

Specifications according to PED, Rev. 01

Pipe adapter, classified according to PED (EU) 2014/68, Article 4, paragraph 3.

Standard

- Pipe: DIN 11866 Reihe A
- Clamp connection: DIN 32676

MWP (Maximum Working Pressure)

The maximum process pressure depends on the temperature.

The following specifications relate to a reference temperature of 20 °C (68 °F).

DN25 version

MWP 26 bar (377 psi) for gases in fluid group 2

DN32 version

MWP 26 bar (377 psi) for gases in fluid group 2

DN40 version

- MWP 20 bar (290 psi) for gases in fluid group 2
- MWP 26 bar (377 psi) for liquids in fluid group 1

DN50 version

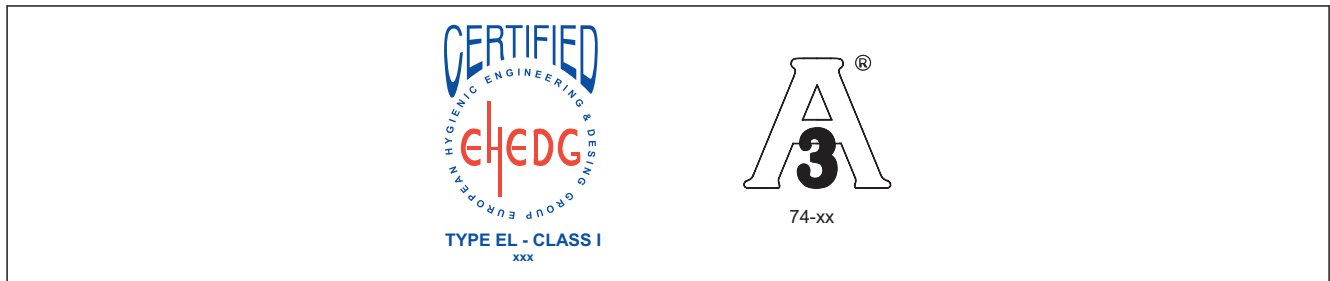
- MWP 20 bar (290 psi) for gases in fluid group 2
- MWP 26 bar (377 psi) for liquids in fluid group 1

Process temperature range

- -40 to +130 °C (-40 to +266 °F)
- For a maximum of 30 min: 130 to 150 °C (266 to 302 °F) (e.g. SIP cleaning)

Certification

EHEDG and 3-A



A0041353

Address

Endress+Hauser SE+Co. KG
Hauptstraße 1
79689 Maulburg, Germany