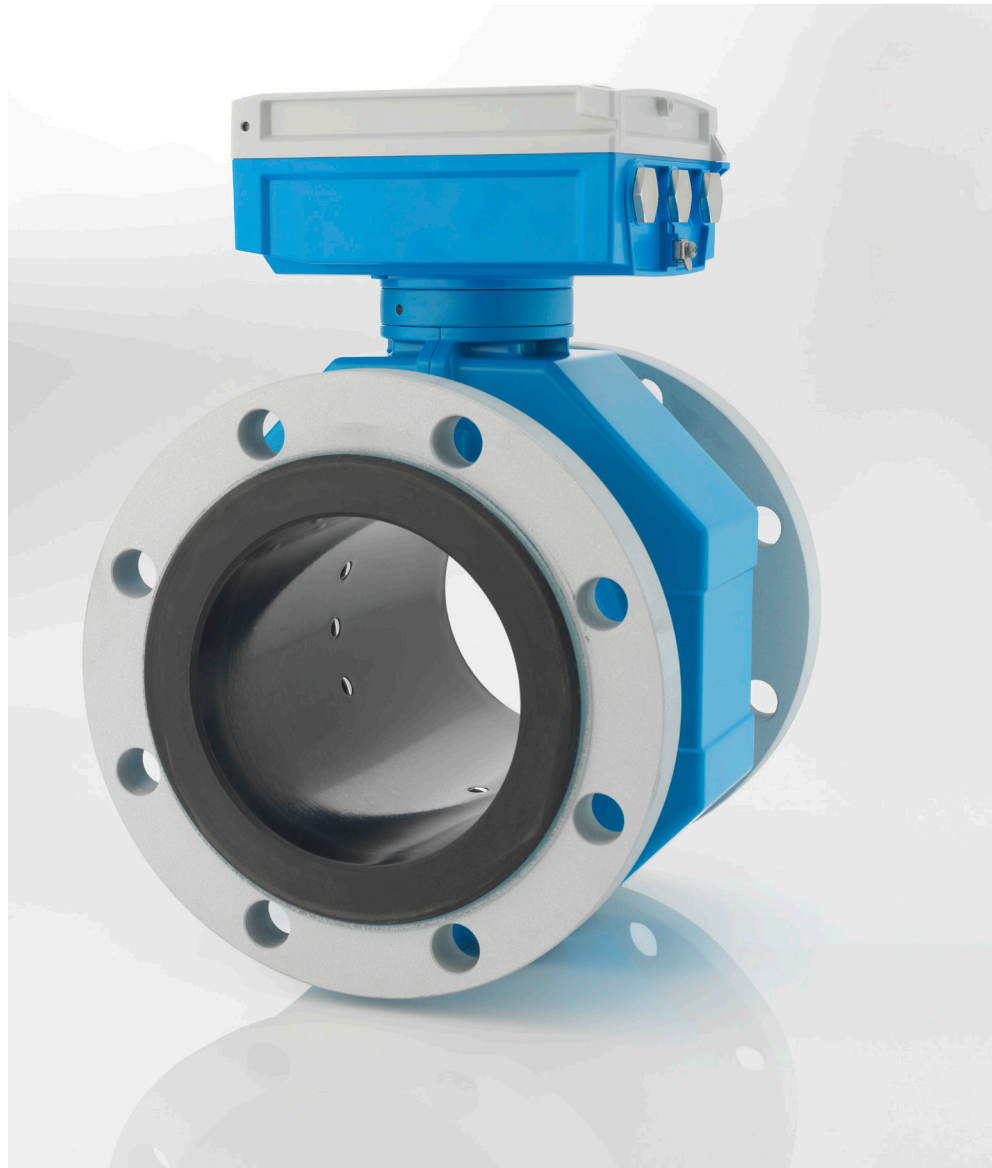


Proline Promag W 10/300/400/500 0 x DN full bore

The world's first electromagnetic flowmeter for unrestricted measurements

Measure reliably – independent of flow profile and mounting location

- The first and only electromagnetic flowmeter with no inlet and outlet runs (0 x DN) as well as no pipe restriction (full-bore design) and thus no pressure loss
- Reliable measured values thanks to innovative signal analysis and processing
- Installation directly after bends, perfect for space-restricted areas and on skids
- Best-performing flowmeter for all applications in water distribution as well as wastewater treatment
- Industry-optimized flowmeter with internationally recognized drinking water approvals
- Heartbeat Verification for reliable fulfillment of traceability requirements in accordance with ISO 9001
- Based on tried-and-tested sensors: installed successfully in over 3 million applications since 1977



Technical data

Sensor – Promag W

Nominal diameters	DN 25 to 3000 (1 to 120")	Turndown	1000:1
Process connections	– Flanges: EN (DIN), ASME, JIS, AWWA, AS – Lap-joint flanges: EN (DIN), ASME	Materials (liners)	Polyurethane, hard rubber, PTFE All liners have drinking water approvals: KTW/W270, ACS, NSF 61, WRAS BS 6920
Process temperature	–20 to +90 °C (–4 to +194 °F)	Electrical conductivity	≥5 µS/cm (liquids in general)
Degree of protection	Standard: IP66/67 (Type 4X enclosure) Option: IP68 (Type 6P enclosure)	Inlet/outlet runs	0 x DN
Max. measured error	Standard: ±0.5% o.r. Option: ±0.2% o.r. Directly after bend: ±0.5% o.r.		

Transmitters



Proline 10

- Transmitter for basic applications with easy-to-use operation concept
- Optimum usability with mobile devices and SmartBlue App or display with touch screen



Proline 300

- Multi-functional transmitter for the process industry and for hazardous areas (Zone 1)
- Reduced complexity thanks to freely configurable I/Os; large variety of fieldbuses



Proline 400

- State-of-the-art transmitter for water and wastewater applications
- Corrosion-resistant housing made of polycarbonate



Proline 500

- For remote installation: remote digital or remote analog
- Large variety of fieldbuses with up to 4 freely configurable I/Os

- Easy operation via display, SmartBlue App, WLAN as well as web server which is integrated for time-saving local operation with no additional software and hardware (depending on transmitter)
- Heartbeat Technology for maximum plant availability: permanent self-diagnosis, device verification and monitoring
- HistoROM device memory: complete system integration compatibility through automatic restoration of the original firmware in service cases

Subject to modification

www.addresses.endress.com

Eco-friendly produced and printed on paper from sustainable forestry.

IN01143D/06/EN/03.22

Endress+Hauser 

People for Process Automation