



Special Documentation

Fermentation Monitor QWX43

Start-Up Guide

Safety symbols

See Operating Instructions.

Safety instructions

⚠ WARNING

Incorrect commissioning leads to distorted measurement results or risk of injury due to incorrect installation!

- ▶ The device may only be commissioned by authorized and qualified personnel.
- ▶ If you do not understand the graphical instructions enclosed, then download the Operating Instructions.

⚠ WARNING

Risk of burns from hot surfaces!

- ▶ Process-specific temperatures of up to 80 °C (176 °F) can occur at the process connection when the device is in operation. Use suitable gloves or allow the device to cool down.

⚠ WARNING

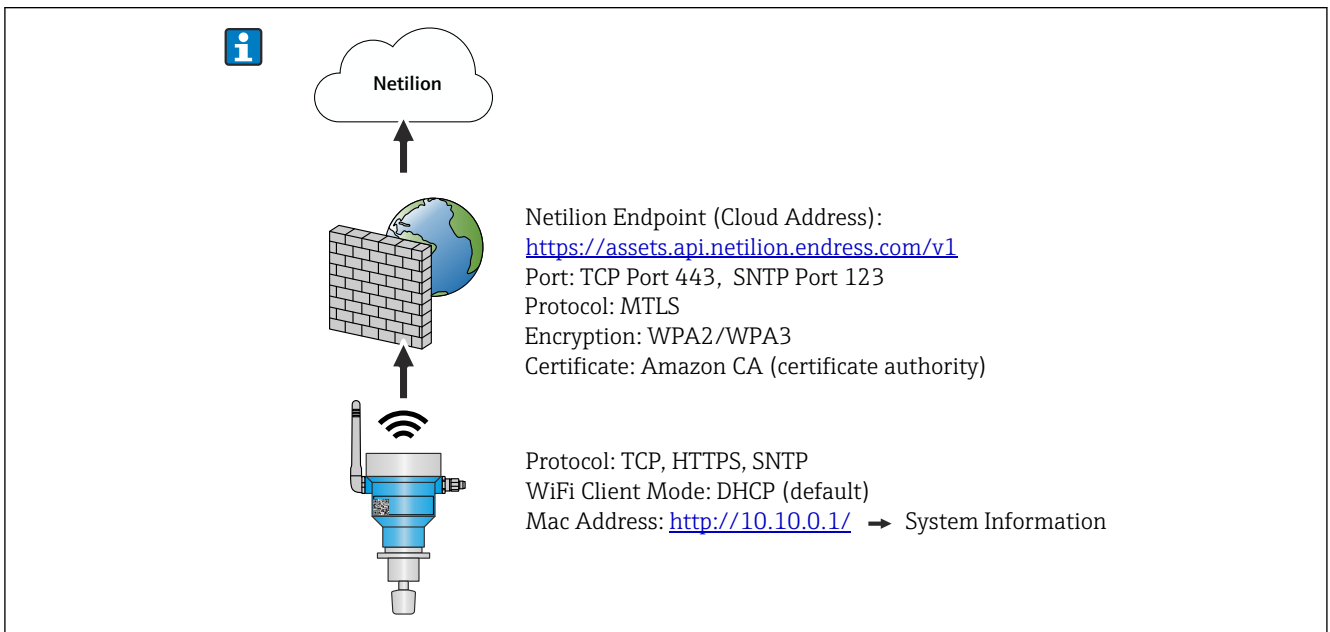
Risk of electric shock if voltage is present!

- ▶ If the device is connected to voltage, do not open the device cover and do not touch electrical contacts.



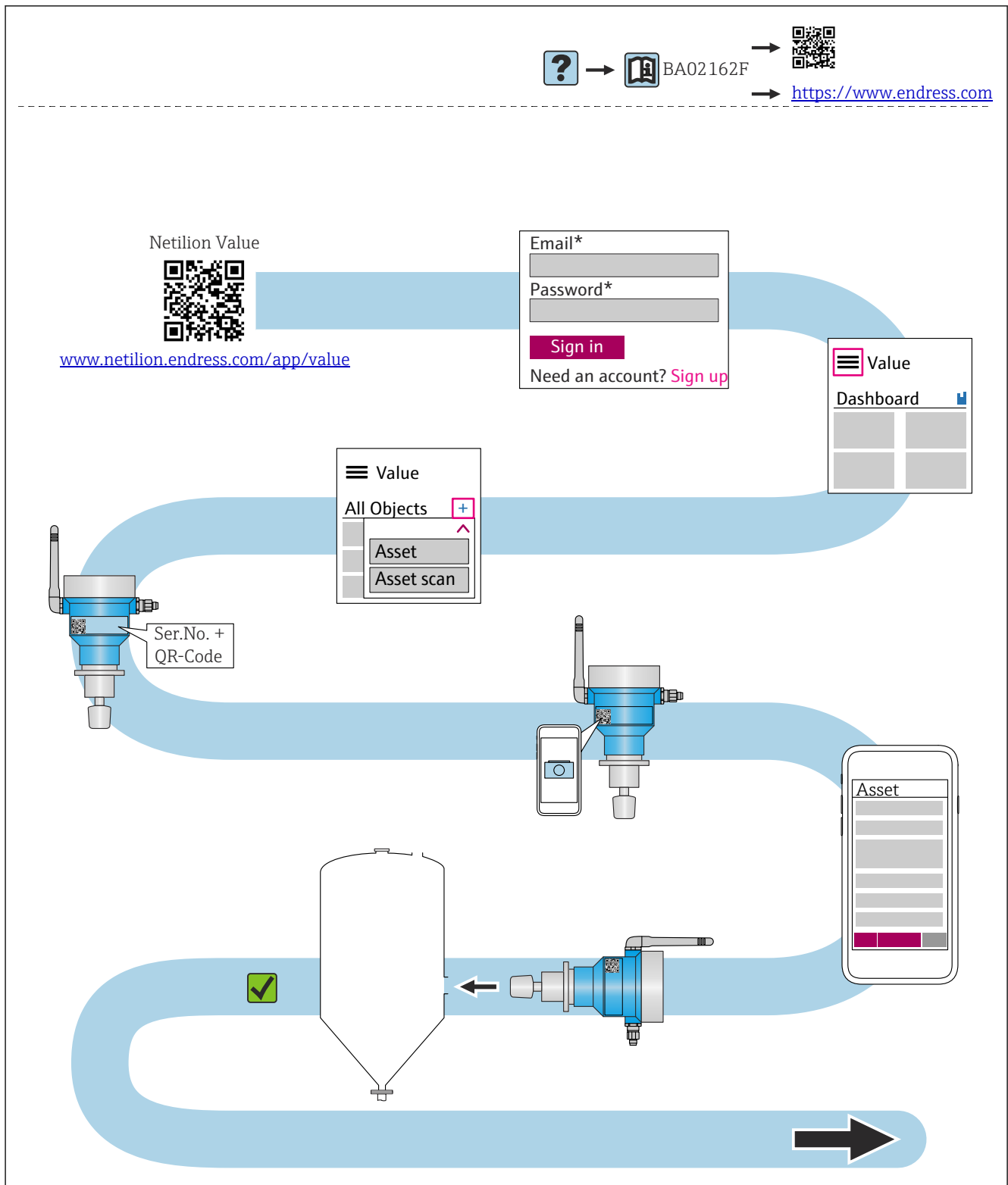
A secure WLAN network is recommended on the customer's side for connection to the Internet.

Network configuration

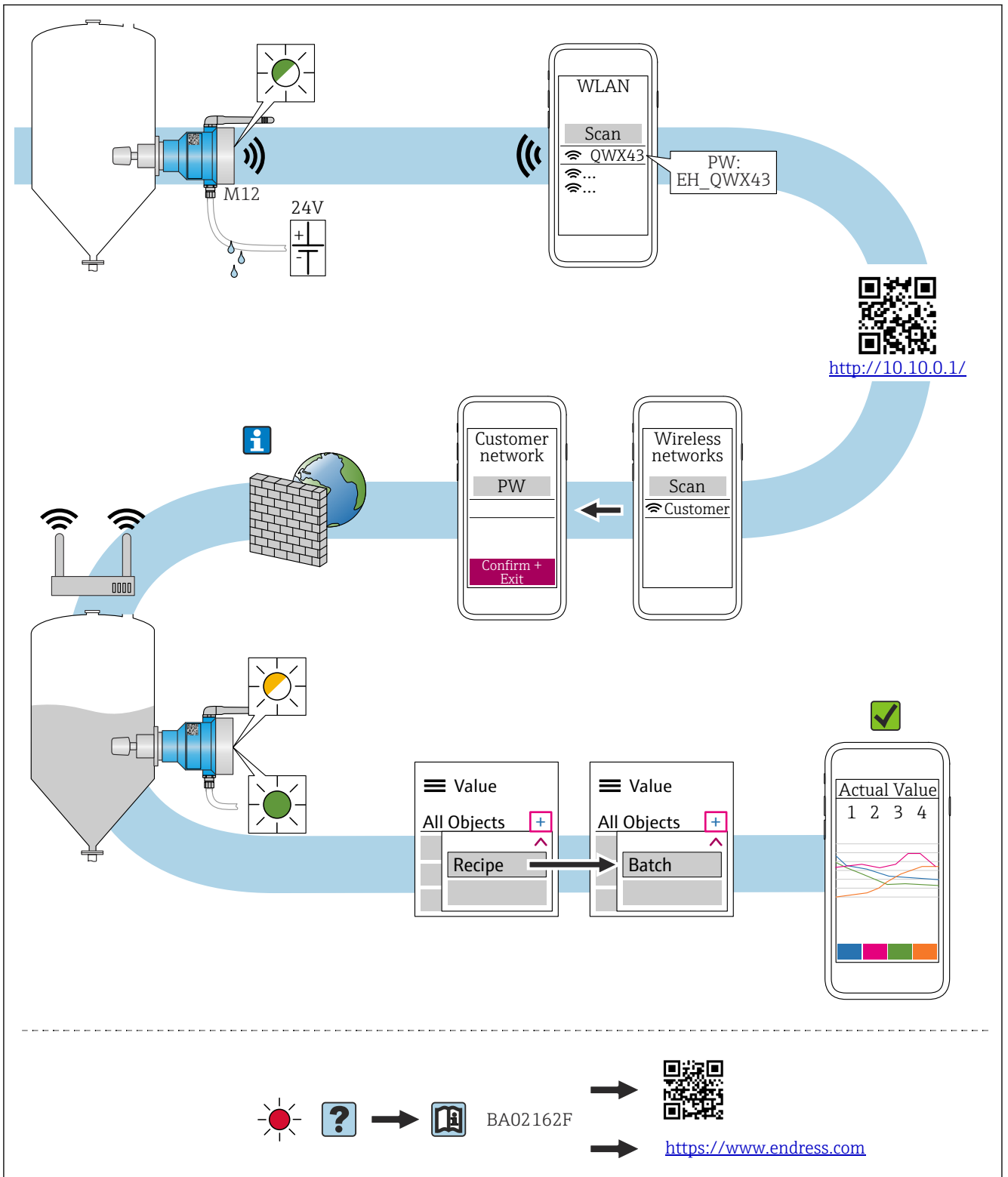


A0050099

Netilion connection

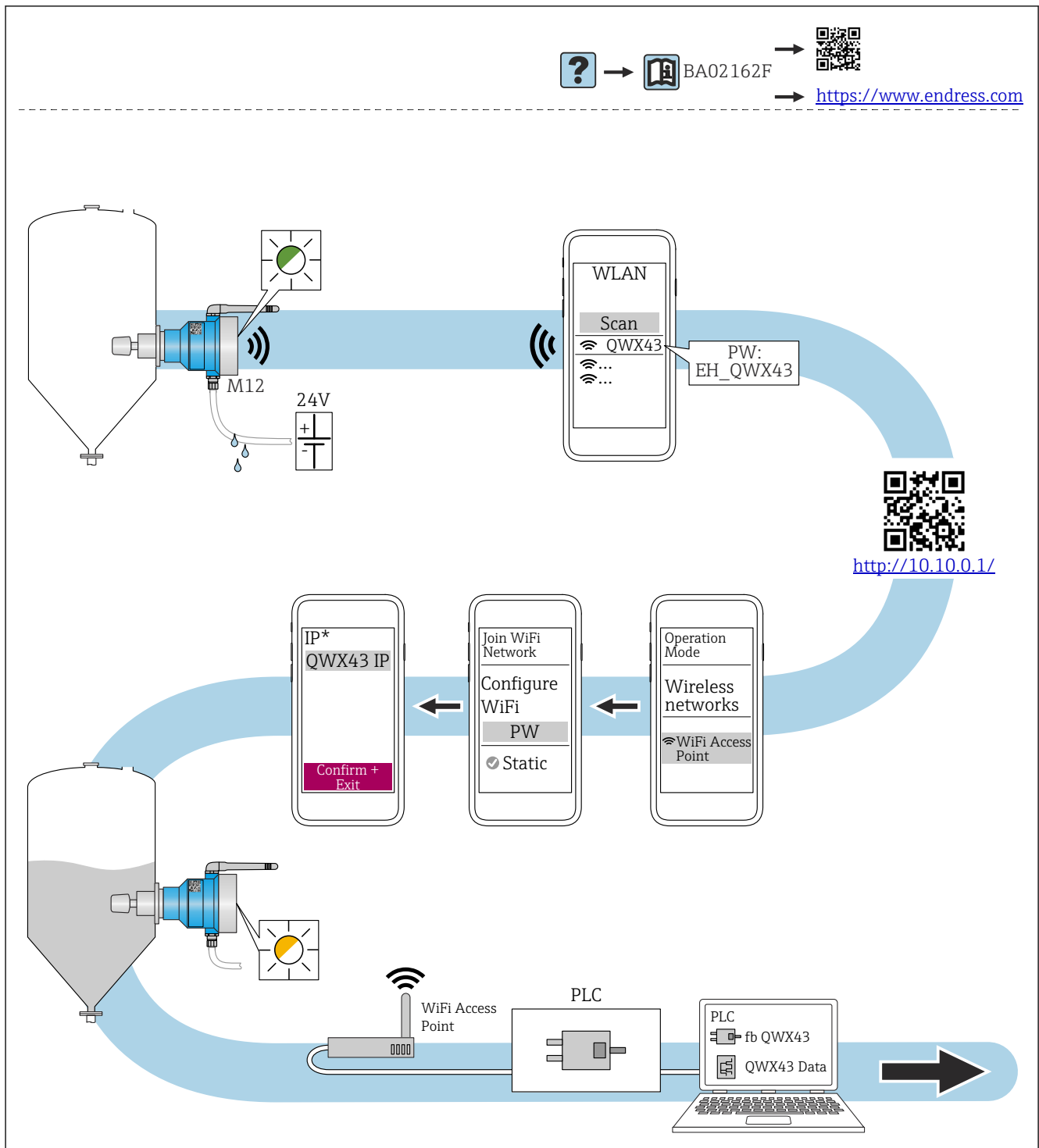


A0046394

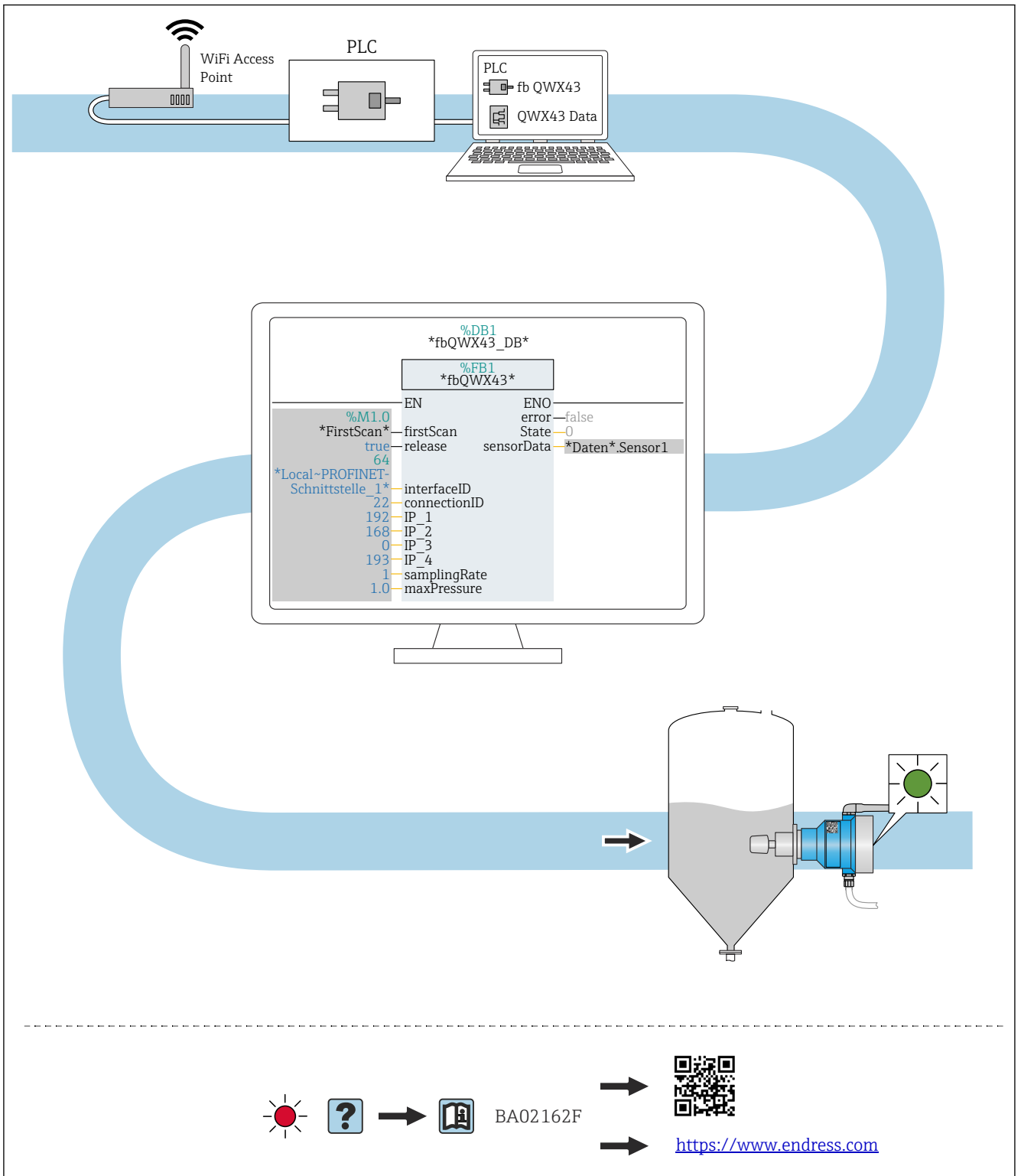


A0046395

Connection for direct integration



A0052134



A0052522
