

Number **TC8732** revision 3
Project number 3831650
Page 1 of 1

Issued by

NMi Certin B.V.

In accordance with

The "Metrologiewet" (Stb. 2006, 137) and
the "Regeling nationaal autonoom geregelde meetinstrumenten"

Producer

Endress+Hauser SE+Co. KG
Hauptstrasse 1
79689 Maulburg
Germany

Part

A **calculating and indicating device**, intended for use as part of an
automatic level gauge for liquid level measurements
Manufacturer's mark or name : Endress+Hauser SE+Co. KG
Type designation : Tankvision Professional NXA85

Further properties are described in the annexes:

- Description TC8732 revision 3;
- Documentation folder TC8732-1.

Initially issued

4 May 2016

Remark

- This revision replaces the previous revision(s), except its documentation
folder.

Issuing Authority

The Designated Body, NMI Certin B.V.
27 June 2024

Certification Board

NMI Certin B.V.
Thijssseweg 11
2629 JA Delft
The Netherlands
T +31 88 636 2332
certin@nmi.nl
www.nmi.nl

This document is issued under the provision
that no liability is accepted and that the
producer shall indemnify third-party liability.
Reproduction of the complete document
only is permitted.

This document is digitally signed and
sealed. The digital signature can be
verified in the blue ribbon at the top
of the electronic version of this
certificate.

1 General information about the calculating and indicating device

All properties of the calculating and indicating device, whether mentioned or not, shall not be in conflict with the legislation.

This Test Certificate is the positive result of the applied voluntary, modular approach, for a component of a measuring instrument, as described in WELMEC 8.8, 2017.

The complete measuring instrument must be covered by relevant metrological certification that is valid in the country where the instrument is put into use.

Tankvision Professional is a scalable tank inventory management application suited for small terminals and depots to large refineries. The system can be provided on a standalone single user station or as a multi-user system configured as a client server architecture.

1.1 Essential parts.

1.1.1 Software modules

Tankvision Professional is composed of the following modules:

Module	Module	Module
DCCHost.exe	Library2.dll	Reports (A4)\TankConfigurationSeals.rpt
TankGauging.Data.dll	ManualData.exe	Reports (A4)\SoftwareSeals.rpt
TankGauging.Interfaces.dll	Tank Gauging.exe	Reports (A4)\TankCapacityTableSeals.rpt
Olympus.TankGauging.dll	TankMimic.dll	Reports (A4)\WMAuditTrail.rpt
RTDB_DotNET.dll	TFAConfiguration.exe	Tanks
InventoryCalculator.Std.dll	GridView.exe	TankFarmAutomation
InventoryCalculator.Std.Cpp.dll	Single Tank.exe	Common.Data.dll
NSPluginNet4.dll	Multi Tank.exe	Olympus.Common.Cpp.dll
TankCapacityTables.dll	CustomDesign.dll	Olympus.Common.dll
TankCapacityTablesGUI.exe	CustomRuntime.dll	Olympus.Core.dll
Core.Library.dll	Weights.And.Measures.dll	Olympus.Common.Sql.dll
Core.Enumerations.dll	Reports (A4)\Inventory.rpt	Olympus.Interfaces.dll
Enumerations.dll	Reports (A4)\SingleTankInventory.rpt	Olympus.TankGauging.Client.dll
TankGauging.Library.dll	Reports (A4)\SingleTankOverview.rpt	Common.Interfaces.dll
Library.dll	Reports (A4)\GaugeConfigurationSeals.rpt	Olympus.Common.Client.dll

*Note: all modules mentioned are required for the server system. For the client system, not all modules are required.

A single CRC checksum is calculated on legal relevant data as stated in table above. This CRC will change by doing modifications in the legal relevant binaries. See paragraph 1.2.5 for the approved software version and CRC checksum.

1.2 Essential characteristics

1.2.1 Temperature range ambient

- -5 °C / +40 °C

1.2.2 Electromagnetic environment class

- E2

1.2.3 Power supply

Tankvision Professional is a purely software-based part. Power supply will be dependent on the computer running the software.

1.2.4 Indication

The indication is presented in read-only mode.

- Scale interval of the indication, in m or mm, shall not be greater than 1 mm.
- Level indication information and gauge status (level balance, etc.).
- Indication of status messages, error messages and alarm messages.
- Indication of the device locking status.

Remark:

All legally relevant measuring values are stated with a # sign if the Tankvision Professional is sealed.

1.2.5 Software specification (refer to WELMEC 7.2)

- Software type U;
- Risk Class C;
- Extension T and S, while extensions L and D are not applicable.

Software version	Client/Server	Checksum
18.0.3	Client & Server	AF09D2F83D85200334E2C49900FC84FA043F24F3
18.3.1	Client & Server	5AheQN3oedGoZJeocQmlfc8uOCA=
18.3.2	Client	3ccq9dmYhxnBuiHOgebClhK8Ohs=
	Server	HRqeFCE3ft3bhkxUAmG2c5SyXuY=
18.3.3	Client	ZV/Qb4SKISpryFiqDw3wVVvJ6sg=
	Server	zQZOOK7rM60kXAeVf90uN8Bo0HQ=

Software version and belonging checksum can be viewed by the display as stated in paragraph 1.5.1.

1.2.6 Data communication

The calculating and indicating device is capable of indicating several quantities. Use for Weights and Measures related purposes is allowed for the following quantities:

- Level;
- Temperature;
- Mass;
- Uncorrected volume;
- Volume;
- Density.

The following input(s) can be used for legally relevant data:

- Ethernet.

The following output(s) can be used for legally relevant data:

- Display;
- Ethernet.

The following transmission protocols can be used for legally relevant data:

- TCP / IP

1.3 Essential shapes

1.3.1 Markings

On the calculating and indicating device, clearly visible, at least the following is inscribed:

- Test certificate number TC8732;
- Name or trade mark of the manufacturer;
- Serial number and year of manufacture.

1.4 Conditional parts

1.4.1 Ethernet switch (optional)

An ethernet switch can be used to combine multiple Tankvision (type NXA820) systems with Tankvision Professional. The ethernet switch shall be tested to ensure it meets safety requirements (e.g., UL 1604, CSA C22.2/213 (Class 1, Div. 2)).

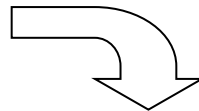
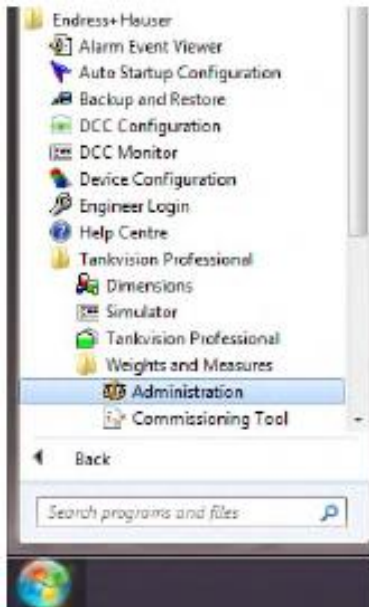
The power supply for the ethernet switch shall be tested to ensure it meets safety requirements (e.g., SELV).

1.5 Conditional characteristics

1.5.1 Programming

When the system is configured, the software can be sealed with a W&M certificate protected with a password. This password can be chosen by the authorizing body. If the software is sealed, no changes on the legally relevant configuration can be done. A change is rejected by the system or will end in an unsealed system.

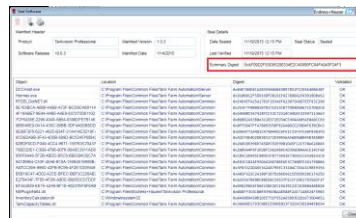
Below an overview is given on how the software version and checksum can be shown.



Select the 'Seal Software' icon from the view menu:



Herewith the software version and CRC can be found:



1.5.2 Printing

Printing of a report using the Printer Agent. Only a one-to-one print of a tank detail report is considered as being Weights & Measures approved.

1.5.3 Error messages

On the indication or indications a message is presented if the measured value is not legal and/or a technical problem occurs.

2 Seals

The following seals are applied:

- The data plate is fixed to the calculating and indicating device and secured against removal by seal or it will be destroyed when removed;
- The software is sealed with a W&M certificate protected with a password. This password can be chosen by the authorizing body. See Annex 1 for the procedure.

3 Conditions for conformity assessment

- The calculating and indicating device shall be constructed in conformity with the description and documentation folder that belong to this Test certificate;
- The seals shall be applied as described in chapter 2;
- Other parties may use this Test Certificate only with the written permission of the producer.

4 Reports

An overview of the performed tests is given in Evaluation Report ER8732 revision 3 issued together with this Test Certificate.



Annex 1

Number **TC8732** revision 3
Project number 3831650
Page 1 of 18

1 General information about the sealing

When the system is configured, the software can be sealed with a W&M certificate protected with a password. This password can be chosen by the authorizing body. If the software is sealed, no changes on the legally relevant configuration can be done. A change is rejected by the system or will end in an unsealed system.

Stand Alone system

To seal a Stand Alone system, follow the below steps.

- 2.1 New Certificate
- 2.2 Sealing Software
- 2.3 Sealing Tank Capacity Tables
- 2.4 Sealing Gauges

Client / Server System

To seal a Client / Server System the database communication needs to be encrypted first. Follow the below steps first before the Stand Alone steps are performed.

- 3.1 Create an SQL Certificate
- 3.2 Apply SQL Certificate to Server
- 3.3 Apply SQL Certificate to Client
- 3.4 W & M Administration in Client
- 3.5 Encrypting Connection

Remark:

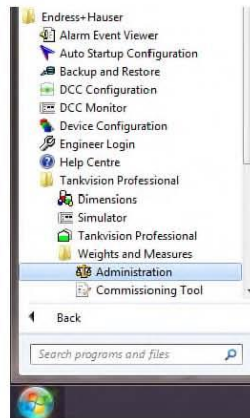
Paragraph numbers correspond to the Weights & Measures Manual.

Weights & Measures Manual

2.0 Configuration

Weights and Measures configuration is performed using the **Administration** tool found in the Start Menu in the following location:

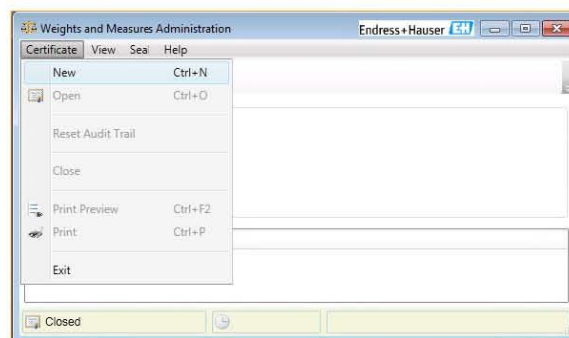
Start\Endress+Hauser\Tankvision Professional\Weights and Measures



This is protected by two levels of security. Initially a user must have “View” rights granted by Tankvision Professional security. In addition to the standard level of security, the W&M certificate can only be modified by entering a certificate password.

2.1 Certificate Configuration

This will normally be performed by the relevant authorizing body.

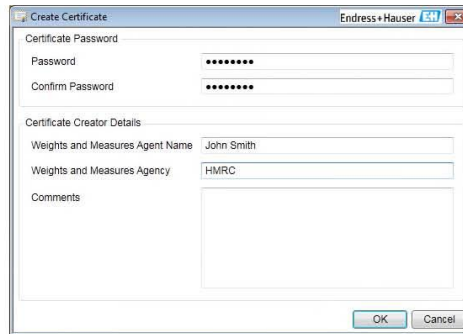


Weights & Measures Manual

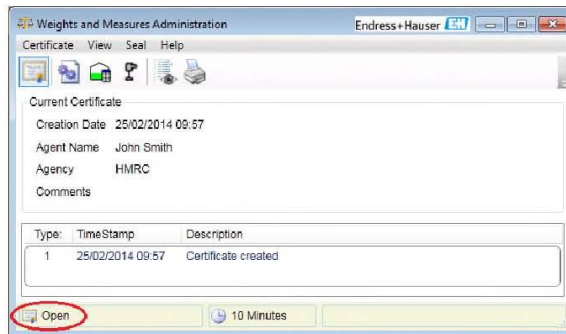
2.1.1 New Certificate

The steps to create a certificate are as follows:

- 1) Open the administration screen and select **Certificate\New** from the menu bar.
- 2) In the "Create Certificate" window that opens enter and confirm the certificate password. Complete the fields for the Certificate Creator Details and click OK to create the certificate.



- 3) An **Open** certificate will be created.



W&M items can only be sealed whilst the certificate is open. The certificate will remain open for a period of 10 minutes with no activity before automatically closing.

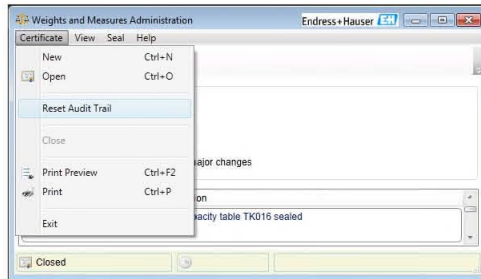
To manually close the certificate either close the window by clicking the cross in the top right corner, select **Certificate\Close** from the menu bar or click on the Certificate icon .



Weights & Measures Manual

2.1.2 Reset Audit Trail

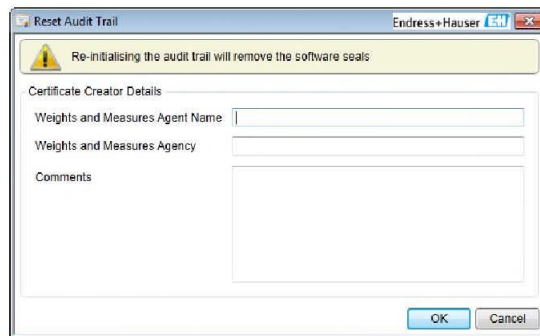
The Audit trail can be reset from **Certificate\Reset Audit Trail** in the menu bar.



The audit trail can only be reset whilst the certificate is Open. If not already open you will be prompted to enter the certificate password to continue.



A screen will open to enter the details of the agent resetting the audit trail.



Enter the details and any optional comments and click OK to continue. If any details are missing a reminder box will open, click OK to return and enter the missing details.

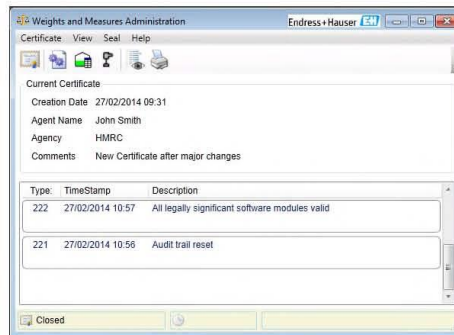


Weights & Measures Manual

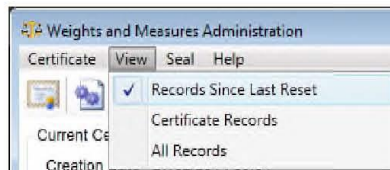
Ensure that this process takes no longer than 10 minutes or the open certificate will close and you will be prompted to re-enter your password.



A new entry will be made into the Audit Trail to record the reset and a check will be made to validate the legally significant software.



Audit entries are not deleted. A new option will be added to the View menu to display only the record entries made since the last reset. To view entries made prior to the reset select **View\Certificate Records**.




The final option in the View menu, **All Records**, is used to display historical records when subsequent New certificates have been created, records for any older certificates will not be deleted but they are no longer verifiable so will be hidden by default.



WARNING: Resetting the Audit Trail will remove all of the W&M seals from the software, Tank Capacity Tables and Gauges.

2.2 Sealing Software

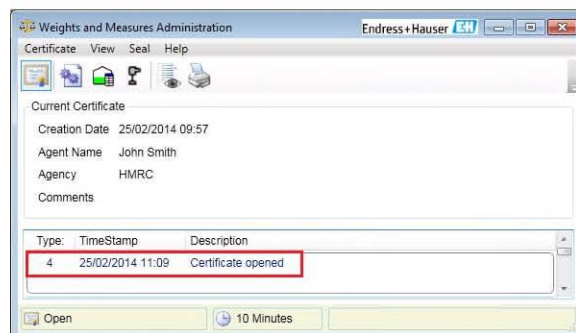
In order to seal the software the certificate must be Open.


Click the certificate icon  and enter the correct password to open the certificate.



Alternatively attempting to seal an item whilst the certificate is "Closed" will open the password entry box.

An entry will be made into the event log to indicate that the certificate has been opened.



To check the status of the software seals click the Seal Software icon .



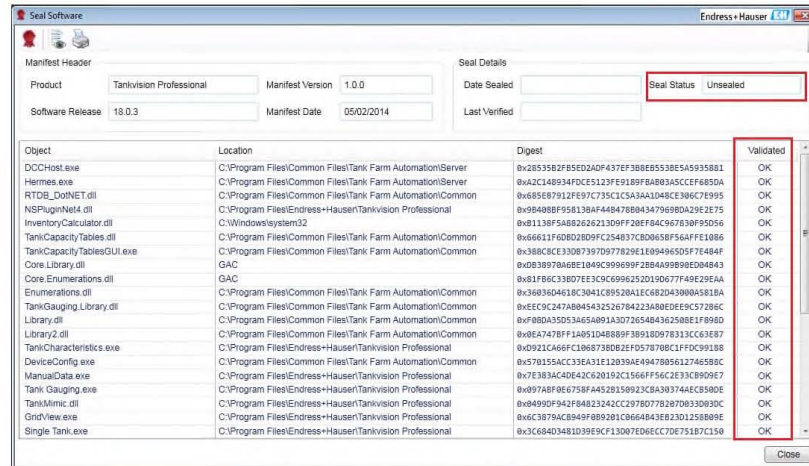
A window opens to show the seal status and validity of the legally significant software.



Annex 1

Number **TC8732** revision 3
Project number 3831650
Page 7 of 18

Weights & Measures Manual



The software can be sealed by clicking the Seal  icon.

The seal details will update with the new status and the seal icon will “grey out” to indicate that it will serve no further purpose whilst the seal is intact.



The window can be closed using the close window cross or the Close button.


An entry will be made into the Audit Trail to indicate that the software has been sealed.

Type:	TimeStamp	Description
8	25/02/2014 11:34	Legally significant software sealed

Weights & Measures Manual

2.3 Sealing Tank Capacity Tables



In order to seal the Tank Capacity Tables the certificate must be Open.

Click the certificate icon  and enter the correct password to open the certificate.

Click on the “Seal Tank Capacity Tables” icon to open the Tank Capacity Table Seals window.



UID	Table ID	Role	Type	Valid From	Valid To	Digest	Status	Date Sealed
1	TK001	Standard	Innage	n/a	n/a	0x42849EC849C805648B8E4E4CC7E4F43888CCAS	Unsealed	
2	TK002	Standard	Innage	n/a	n/a	0x3530CEB8E4A6A655382BC6CF66A7D0C3A7769	Unsealed	
3	TK003	Standard	Innage	n/a	n/a	0x21CB991783F3F3F3F3E42A1246D2AF48888F98	Unsealed	
4	TK004	Standard	Innage	n/a	n/a	0x6844F83855F489557C46E285189931F6F4C448	Unsealed	
5	TK005	Standard	Innage	n/a	n/a	0x2C8EA791E289A088127C8AF88138A8DF231EDF	Unsealed	
6	TK006	Standard	Innage	n/a	n/a	0x817C64E8E964677E2FAD4874290477CE27338C	Unsealed	
7	TK007	Standard	Innage	n/a	n/a	0x85487CAGAC8C786E4855A836C12C2687478148	Unsealed	
8	TK008	Standard	Innage	n/a	n/a	0x313884F0F6D763385C3658A78939321885601	Unsealed	
9	TK009	Standard	Innage	n/a	n/a	0x8457653F4A4C4539123953C5F7C6D200FADF6CE	Unsealed	
10	TK010	Standard	Innage	n/a	n/a	0xC8259FEA1D88828C8B7A3F8888620618312897E	Unsealed	
11	TK011	Standard	Innage	n/a	n/a	0x4442C31E8E85FEA84522A6E82A584E8B3704	Unsealed	
12	TK012	Standard	Innage	n/a	n/a	0xEF1501F888A32D1C8A42932E87935AC18846CE	Unsealed	
13	TK013	Standard	Innage	n/a	n/a	0x494EFD461484118C8686284838865D331308E	Unsealed	
14	TK014	Standard	Innage	n/a	n/a	0x5869C273685D0FCAB86C78CFAD02F67992981E2	Unsealed	
15	TK015	Standard	Innage	n/a	n/a	0xF8A8428C8E0C88885A8B613828532987887	Unsealed	
16	TK016	Standard	Innage	n/a	n/a	0x136491CEC7A8D888C83A8C87C38284E313729	Unsealed	
17	TK017	Standard	Innage	n/a	n/a	0x45D14F1308666F8822183248910E5632459C	Unsealed	
18	TK018	Standard	Innage	n/a	n/a	0x7E918FC8A8C8483596428881284820E4FE28E9	Unsealed	
19	TK019	Standard	Innage	n/a	n/a	0x3E1D0C8348378E7576CCF40D1317CB79102A0DE	Unsealed	
20	TK020	Standard	Innage	n/a	n/a	0x2348F518F44FE32988E8A17958F2DC8A17886AE	Unsealed	

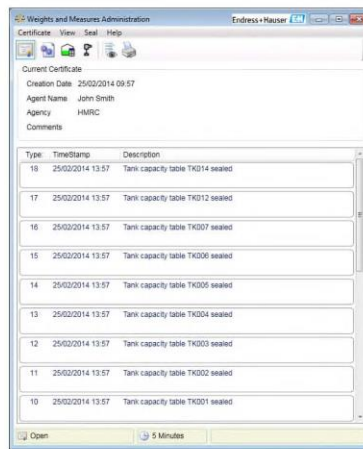
Select the table to be sealed. Multiple tables may be selected by using the standard Windows “Shift” and “Ctrl” selection methods. Clicking the  icon selects all Unsealed tables. Once a table has been selected the seal icon  becomes active.

Click the seal icon to seal the selected Tank Capacity Table(s).

UID	Table ID	Role	Type	Valid From	Valid To	Digest	Status	Date Sealed
1	TK001	Standard	Innage	n/a	n/a	0x42849EC849C805648B8E4E4CC7E4F43888CCAS	Sealed	25/02/2014 13:57
2	TK002	Standard	Innage	n/a	n/a	0x3530CEB8E4A6A655382BC6CF66A7D0C3A7769	Sealed	25/02/2014 13:57
3	TK003	Standard	Innage	n/a	n/a	0x21CB991783F3F3F3F3E42A1246D2AF48888F98	Sealed	25/02/2014 13:57
4	TK004	Standard	Innage	n/a	n/a	0x6844F83855F489557C46E285189931F6F4C448	Sealed	25/02/2014 13:57
5	TK005	Standard	Innage	n/a	n/a	0x2C8EA791E289A088127C8AF88138A8DF231EDF	Sealed	25/02/2014 13:57
6	TK006	Standard	Innage	n/a	n/a	0x817C64E8E964677E2FAD4874290477CE27338C	Sealed	25/02/2014 13:57
7	TK007	Standard	Innage	n/a	n/a	0x85487CAGAC8C786E4855A836C12C2687478148	Sealed	25/02/2014 13:57
8	TK008	Standard	Innage	n/a	n/a	0x313884F0F6D763385C3658A78939321885601	Unsealed	
9	TK009	Standard	Innage	n/a	n/a	0x8457653F4A4C4539123953C5F7C6D200FADF6CE	Unsealed	
10	TK010	Standard	Innage	n/a	n/a	0xC8259FEA1D88828C8B7A3F8888620618312897E	Unsealed	
11	TK011	Standard	Innage	n/a	n/a	0x4442C31E8E85FEA84522A6E82A584E8B3704	Unsealed	
12	TK012	Standard	Innage	n/a	n/a	0xEF1501F888A32D1C8A42932E87935AC18846CE	Sealed	25/02/2014 13:57
13	TK013	Standard	Innage	n/a	n/a	0x494EFD461484118C8686284838865D331308E	Unsealed	
14	TK014	Standard	Innage	n/a	n/a	0x5869C273685D0FCAB86C78CFAD02F67992981E2	Sealed	25/02/2014 13:57
15	TK015	Standard	Innage	n/a	n/a	0xF8A8428C8E0C88885A8B613828532987887	Unsealed	
16	TK016	Standard	Innage	n/a	n/a	0x136491CEC7A8D888C83A8C87C38284E313729	Unsealed	
17	TK017	Standard	Innage	n/a	n/a	0x45D14F1308666F8822183248910E5632459C	Unsealed	
18	TK018	Standard	Innage	n/a	n/a	0x7E918FC8A8C8483596428881284820E4FE28E9	Unsealed	
19	TK019	Standard	Innage	n/a	n/a	0x3E1D0C8348378E7576CCF40D1317CB79102A0DE	Unsealed	
20	TK020	Standard	Innage	n/a	n/a	0x2348F518F44FE32988E8A17958F2DC8A17886AE	Unsealed	

Weights & Measures Manual

The window can be closed using the close window cross or the Close button. An entry will be made into the Audit log for each table that has been sealed.



2.3.1 TCT Locked Parameters


When a Tank Capacity Table is sealed the following items are locked and can no longer be edited.

Field	Description
TableID	User-readable table identifier
Role	Indicates the table's purpose (normal, water, hydrostatic deformation)
Type	Indicates the table's type (innage, ullage, delta, polynomial)
Valid From	The date from which the table is deemed valid
Reference Height	The defined reference height of the tank
Shell Capacity	The defined capacity of the vessel
Points Table	The table containing the level/volume data for the capacity table.
Polynomial Table	The table containing the polynomial data for the capacity table (if defined as a polynomial table)
P	Factor for the polynomial table

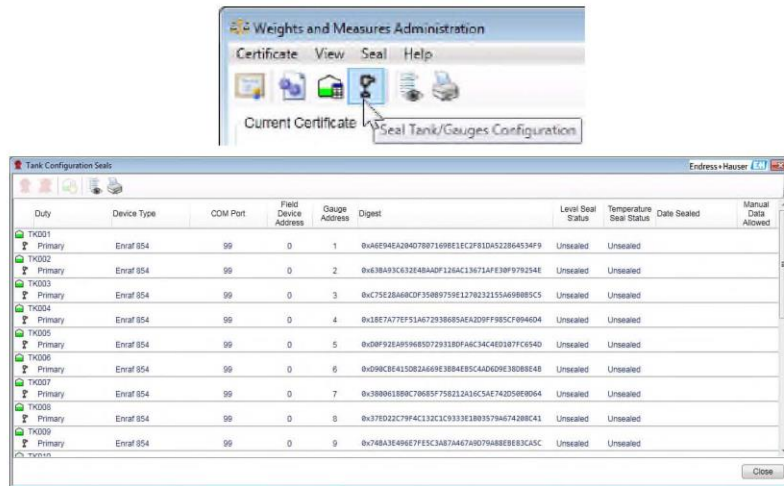
Weights & Measures Manual

2.4 Sealing Gauges

In order to seal the Tank Capacity Tables the certificate must be Open.

Click the certificate icon  and enter the correct password to open the certificate.

Click on the Seal Tanks/Gauges icon to open the "Tank Configuration Seals" window.

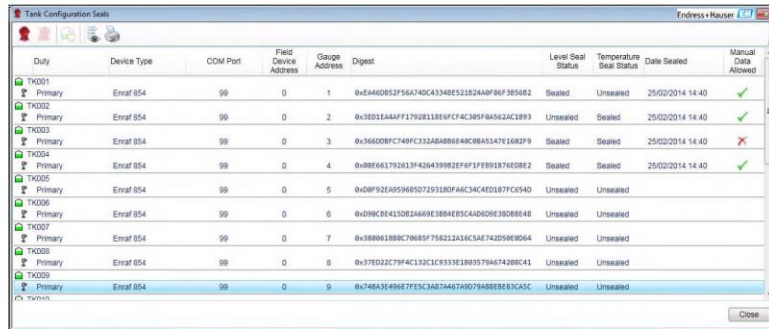


Select any number of devices to enable the seal icon and click the icon to seal the device(s).




Devices may be sealed for Level, Temperature or both.



Weights & Measures Manual

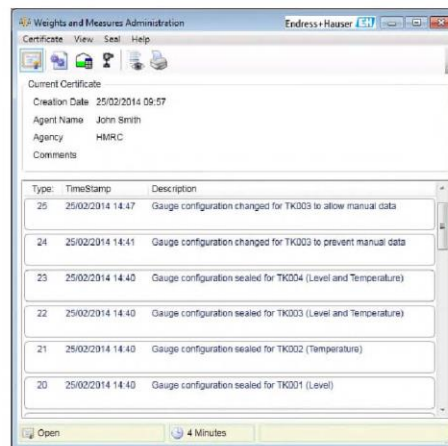


Duty	Device Type	COM Port	Field Device Address	Gauge Address	Digest	Level Seal Status	Temperature Seal Status	Date Sealed	Manual Data Allowed
TK001 Primary	Enraf 854	99	0	1	0xE46D852F56A740CA3348E521824A8F86F385682	Sealed	Unsealed	25/02/2014 14:40	✓
TK002 Primary	Enraf 854	99	0	2	0x3E01EA4AF17928118E8FC74C385F8A562AC1893	Unsealed	Sealed	25/02/2014 14:40	✓
TK003 Primary	Enraf 854	99	0	3	0x948008FC749FC332AB88649C88A5147E1682F9	Sealed	Sealed	25/02/2014 14:40	✗
TK004 Primary	Enraf 854	99	0	4	0x88E661792613F426439982E6F3FEB91876E082	Sealed	Sealed	25/02/2014 14:40	✓
TK005 Primary	Enraf 854	99	0	5	0xD8F92E859668507293180FA6C34CED387FC540	Unsealed	Unsealed		
TK006 Primary	Enraf 854	99	0	6	0xD98C8E415082A669E3884E95C4D0D0E3808E48	Unsealed	Unsealed		
TK007 Primary	Enraf 854	99	0	7	0x388061888C78685F758212A163A8742D5688064	Unsealed	Unsealed		
TK008 Primary	Enraf 854	99	0	8	0x37ED22C7994C132C1C933E3889578A674288C41	Unsealed	Unsealed		
TK009 Primary	Enraf 854	99	0	9	0x748A3E69E7FE5C3A874467A9079A8E8E83C45C	Unsealed	Unsealed		

The default setting for sealed devices is “Manual Data Allowed” . Devices can be toggled between manual data allowed and denied by selecting the device and clicking the  or  icon.

The window can be closed using the close window cross or the Close button.

An entry will be made into the Audit Trail for each device that has been sealed and each change to manual data permissions.



Type	TimeStamp	Description
25	25/02/2014 14:47	Gauge configuration changed for TK003 to allow manual data
24	25/02/2014 14:41	Gauge configuration changed for TK003 to prevent manual data
23	25/02/2014 14:40	Gauge configuration sealed for TK004 (Level and Temperature)
22	25/02/2014 14:40	Gauge configuration sealed for TK003 (Level and Temperature)
21	25/02/2014 14:40	Gauge configuration sealed for TK002 (Temperature)
20	25/02/2014 14:40	Gauge configuration sealed for TK001 (Level)

Weights & Measures Manual

2.4.1 Tank/Device Locked Parameters

When a Tank is sealed the following items are locked and can no longer be edited.

Field	Description
Tank Id	The name of the tank displayed in the UI
Tank Address	The address of the instrument if an intermediary Tankvision Multiscan is to be used to communicate with the field
Gauge Address	The address of the instrument in the field
CIU Address	The address of the field communications interface (if required by the field equipment)
COM Port	The port on the computer used to communicate with the field equipment
Backup CIU Address	The address of an alternative field communications interface when a deployed in a redundant configuration
Backup COM Port	The alternative communications port to be used when in a redundant configuration
Gauge Type ID	The type of instrument employed on the tank
Tank Capacity Table ID	The identity of the tank capacity table to be used to calculate volumes given a product level.

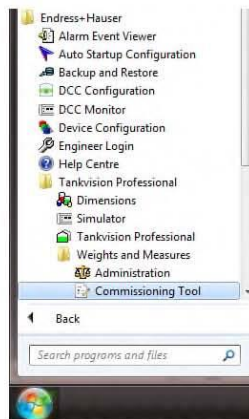
3.0 Client/Server Systems

Client PCs connected to a Weights and Measures sealed Server must have a secure, encrypted connection to the database on the server. In order to be valid for weights and measures the software on the client PC must also be sealed. In most cases the supplied commissioning tool can be used to set up the encrypted connection. However, in a few, advanced, cases it may be necessary to set the encrypted connection up manually. For details of how to set up a secure, encrypted connection manually see Appendix A.

3.1 Create an SQL Certificate

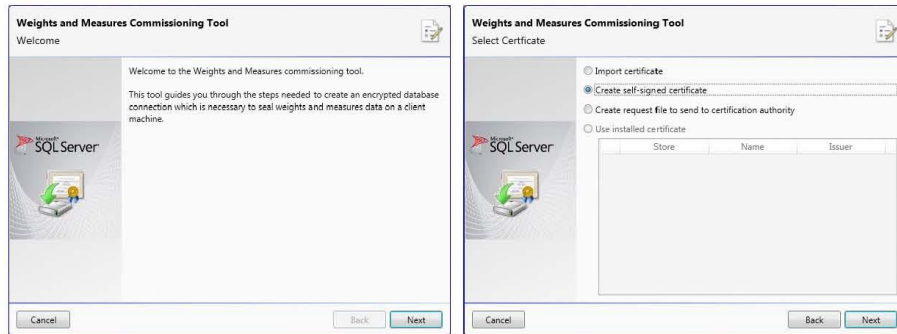
In order to encrypt the connection between the Server and the client an SQL database certificate will be created by the server and imported into the client. There is a tool to create the certificate in the Start menu

Start\Endress+Hauser\Tankvision Professional\Weights and Measures



Click to launch the commissioning tool then click Next to proceed.

Weights & Measures Manual

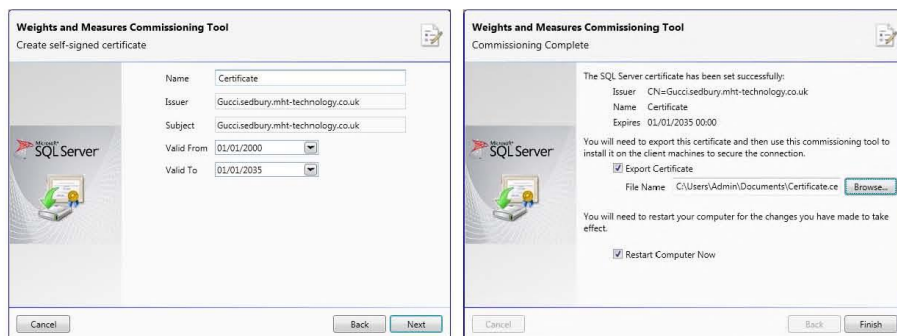


The easiest method is to create a self-signed certificate. Select the option and click Next.

Enter a certificate name and select validation dates, the issuer and subject will be completed automatically. Click Next to continue.

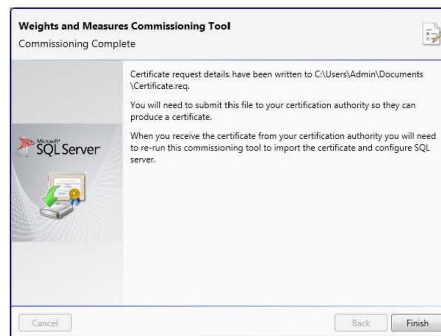
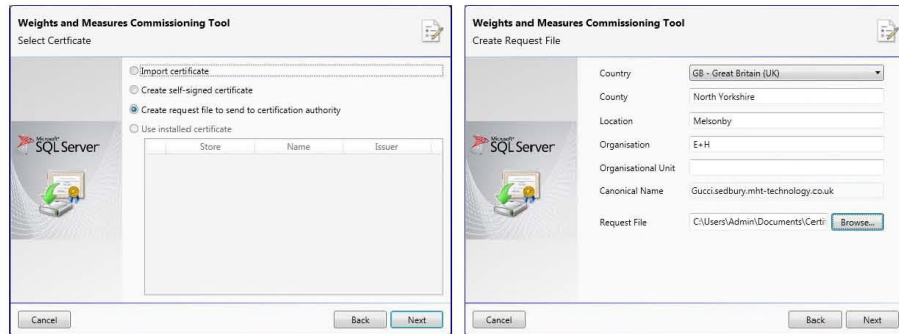
The certificate will be required by any client PCs that require a secure connection to the server.

Enter the location to export the certificate in the next screen. The Server PC will require a restart to complete the process. If you would like to restart the PC at a later time untick the "Restart Computer Now" box.



It may be necessary to have a relevant authority issue the certificate. In this case a request file can be created and sent to the certification authority. Select this option, complete the relevant fields and submit the request file to the certifying authority.

Weights & Measures Manual

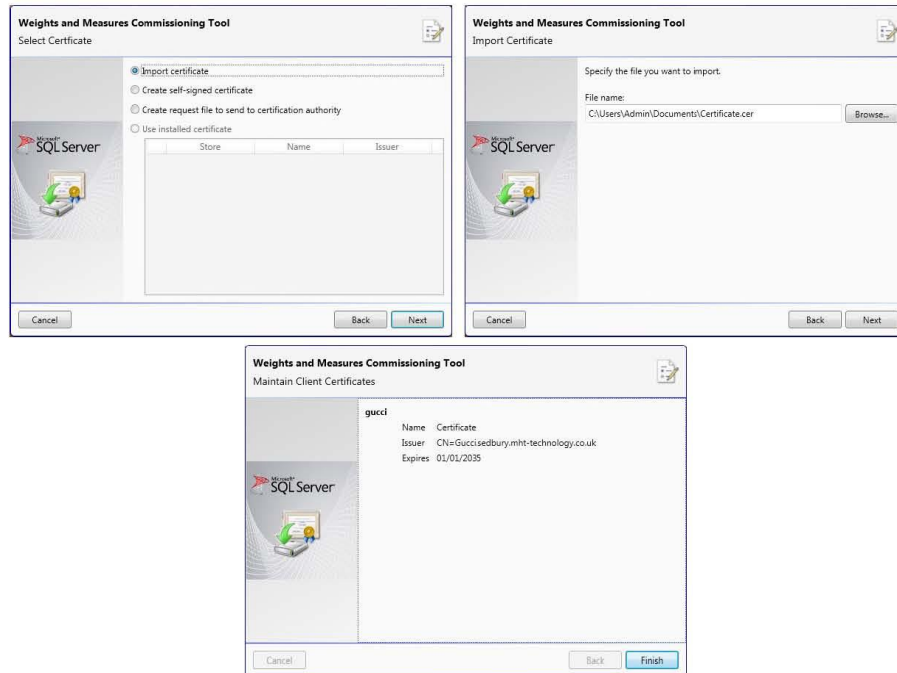


3.2 Apply SQL Certificate to Server

Once a certificate has been issued it must be imported to the server using the "Import Certificate" option

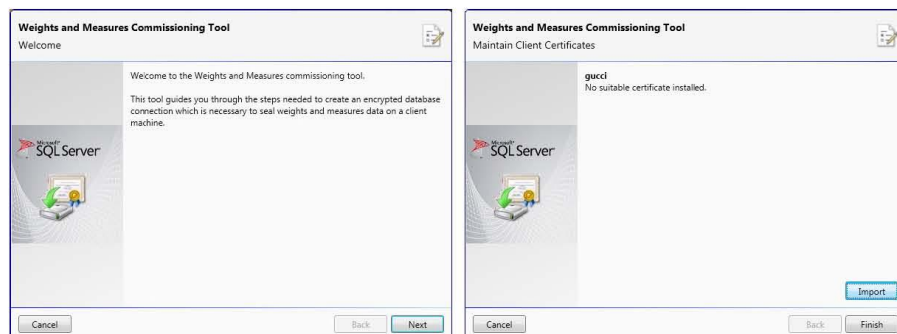
Select Import Certificate, specify the path and filename of the certificate and click Next and then Finish.

Weights & Measures Manual



3.3 Apply SQL Certificate to Client

Once a certificate has been created for the server it must be imported to the Client. Open the weights and measures commissioning tool and click the Import button. Select the location of the stored Server certificate and click Finish to close the tool.



Weights & Measures Manual




3.4 W & M Administration in Client

The weights and measures module on the client PC operates with a simplified set of controls.

As with the server PC the operator is able to Open and Close the Certificate, Preview and Print the Events report and seal the software for the client PC.

It is not possible to seal or unseal Devices and Tank Capacity Tables from a client PC, these functions are restricted to the Server.




One additional function, Server Connections () is added to the client Administration tool.



3.5 Encrypting Connection

Data displayed on a client PC can only be considered weights and measures compliant when the Server\Client connection is Encrypted.

Ensure the server certificate has been applied to the client PC and select the Server Connections option from the Weights and Measures Administration tool.

The following window will open. Select a server from those available and click  to toggle between encrypted  and unencrypted  connection.



Any weights and measures sealed data will display the appropriate indicator when the connection is encrypted. If the connection is not encrypted the indicators will not be present even if the data is W&M compliant.