



# Special Documentation

## Mounting bracket, 1"/2" pipe for FHX50, FHX50B

Accessories

### Intended use

The mounting bracket is used to mount the remote display FHX50 and FHX50B on pipes with an outer diameter of 1" or 2".

### Incorrect use

The manufacturer is not liable for harm caused by improper or unintended use.

### Safety instructions

#### **⚠ WARNING**

**Hazardous area: Risk of explosion due to static charge on mounting bracket!**

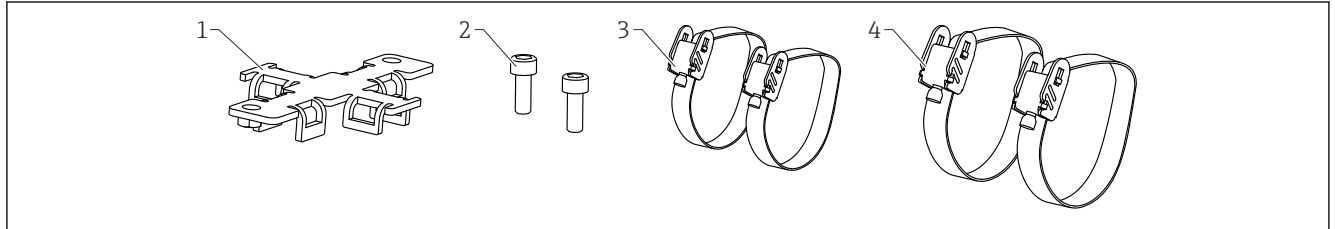
- ▶ Integrate the mounting bracket into the local potential equalization system.

#### **⚠ CAUTION**

**Risk of injury from mechanical damage!**

- ▶ Do not step on or climb on the mounting bracket!

### Scope of delivery



A0019381

1 Scope of delivery, mounting bracket, pipe 1"/2"

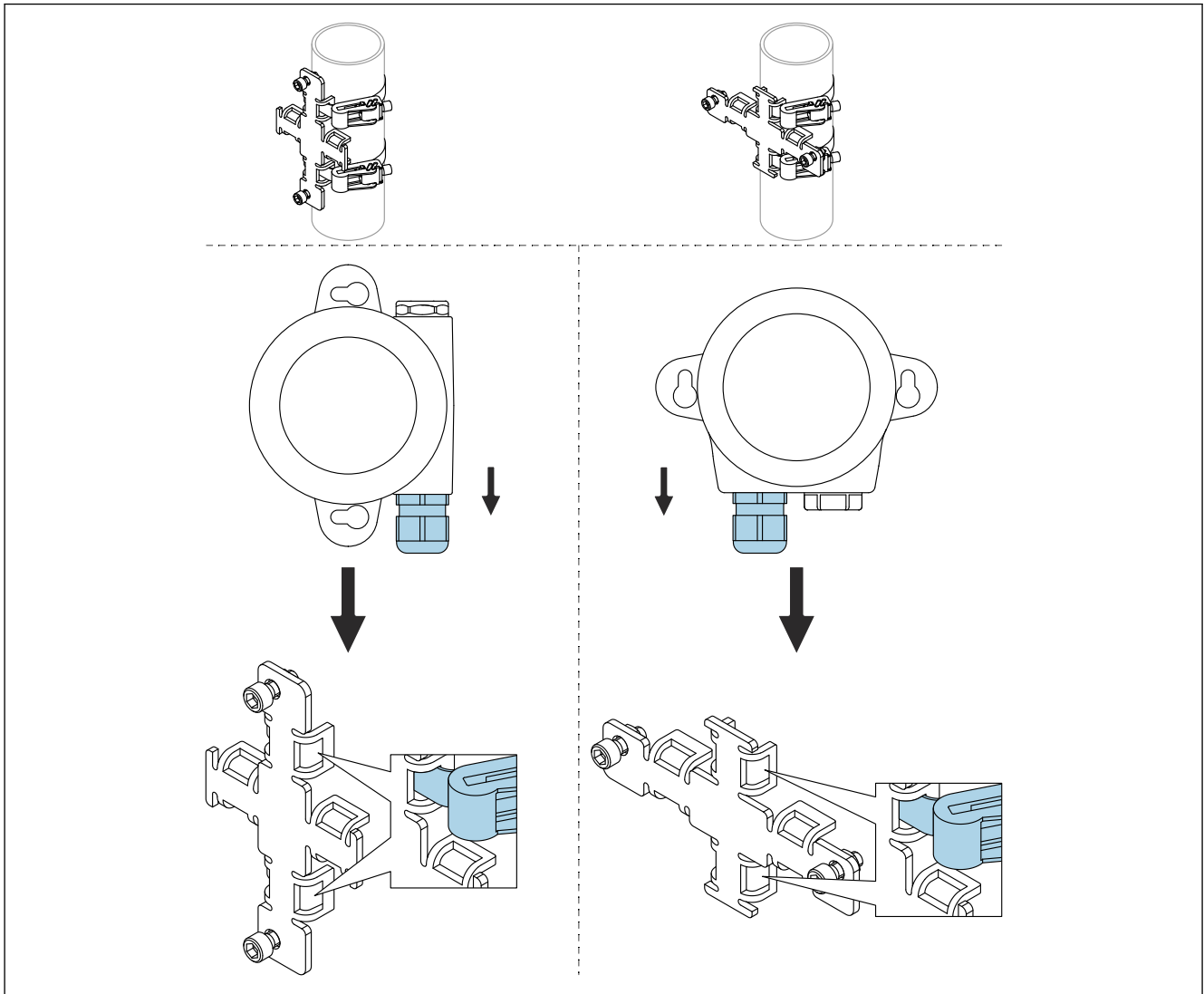
- 1 Mounting bracket, 304 (1.4301)
- 2 2 × screws, A2
- 3 2 × hose clip, 304 (1.4301), clamping range  $\varnothing$  30 to 60 mm (1.18 to 2.36 in)
- 4 2 × hose clip, 304 (1.4301), clamping range  $\varnothing$  50 to 80 mm (1.97 to 3.15 in)

**Order number for accessories:**

71132890

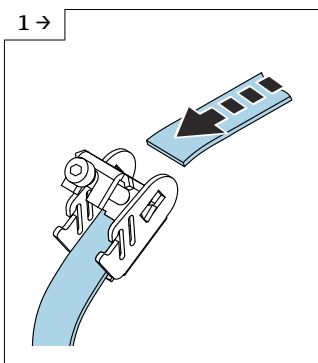
## Mounting

### Pipe vertical

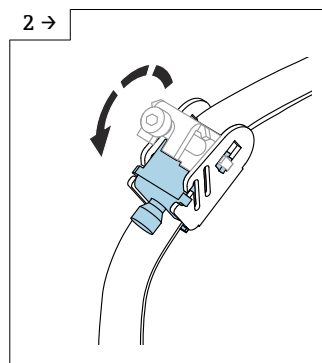


A0056427

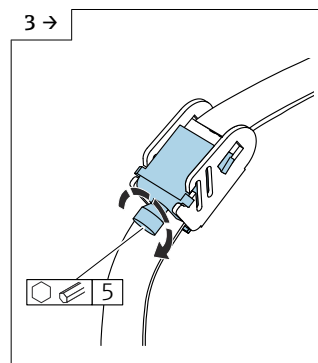
2 Mounting vertically on pipe



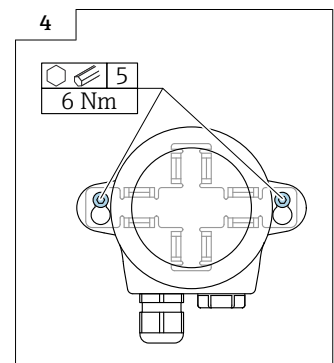
A0056435



A0056436

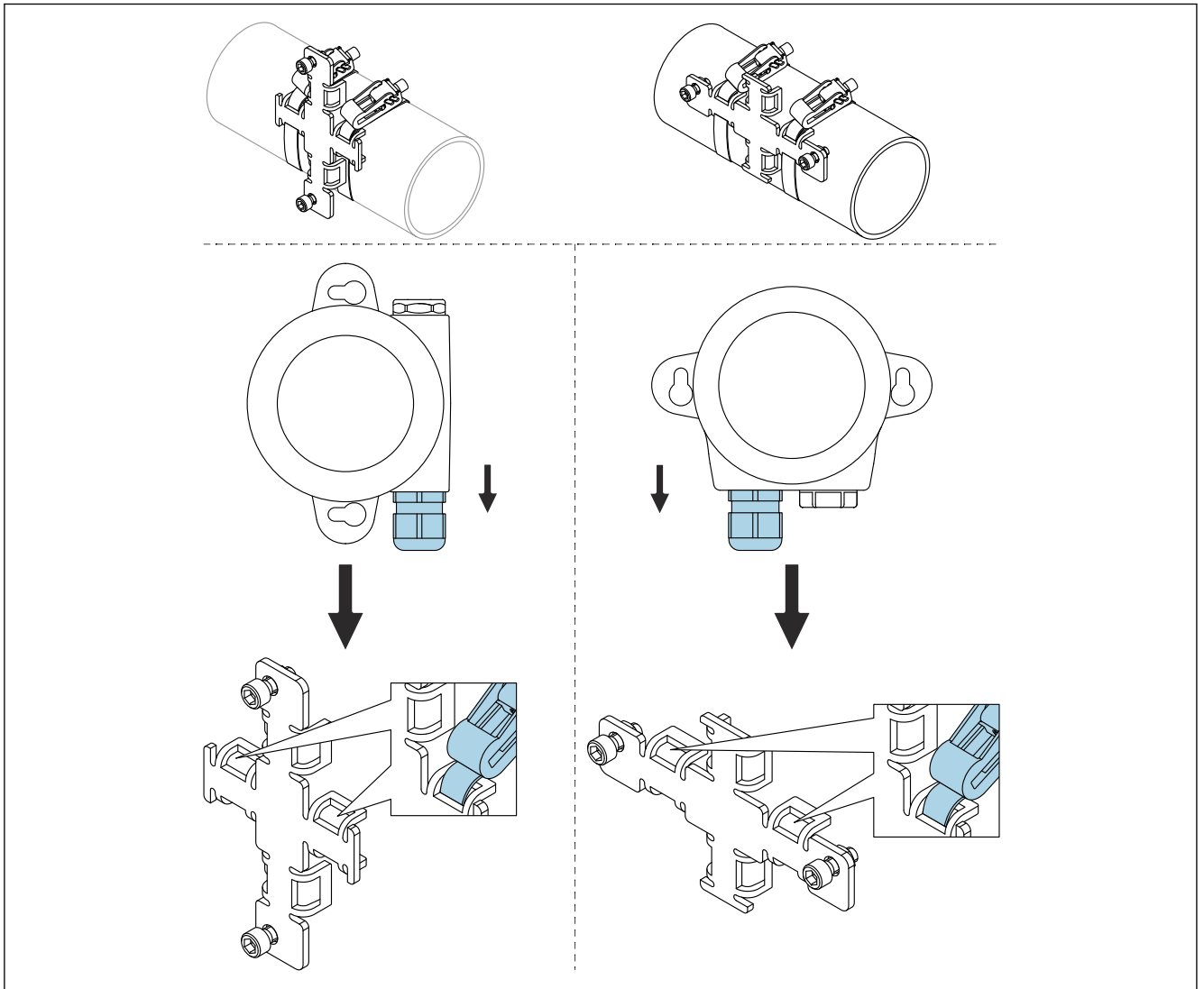


A0056464



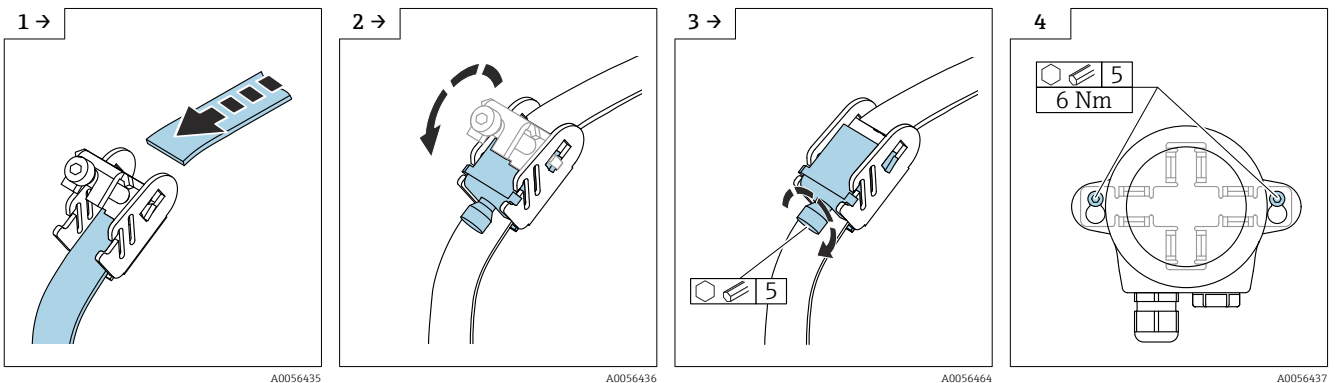
A0056437

## Pipe horizontal



A0056428

3 Mounting horizontally on pipe



---