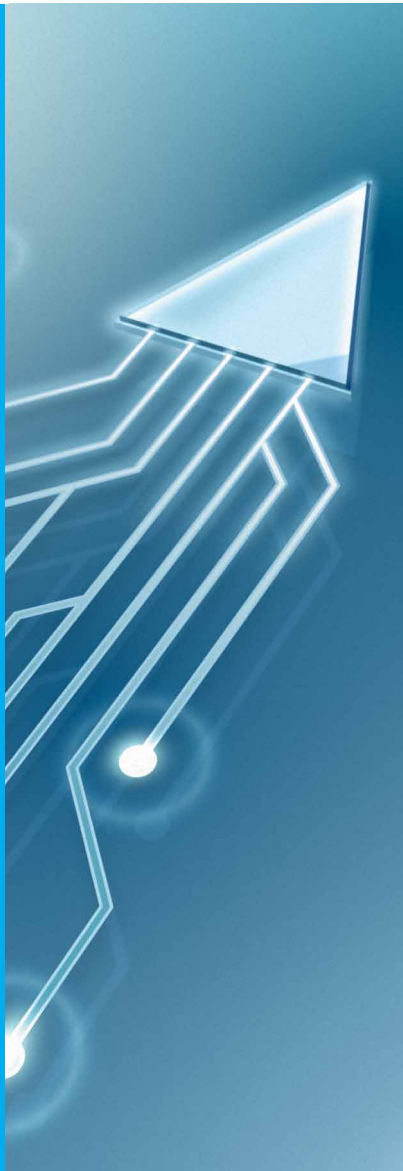


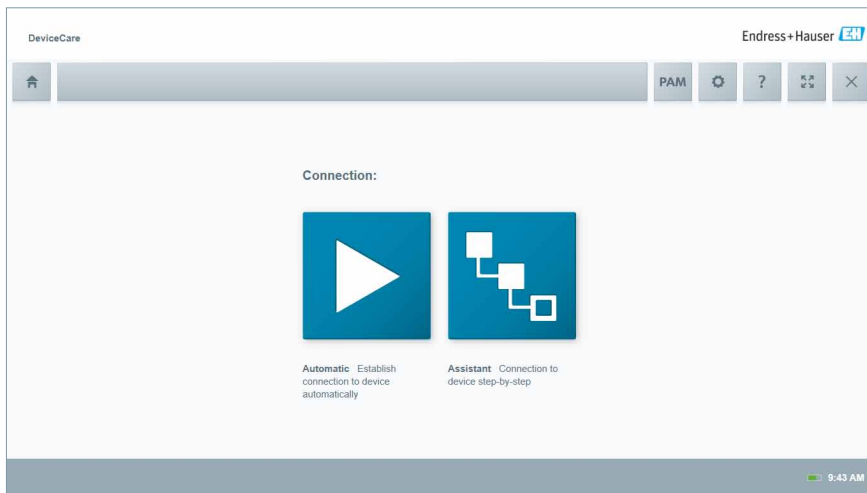
# DeviceCare

## Configuration of Endress+Hauser devices



# DeviceCare

Connect and configure Endress+Hauser field devices



DeviceCare

The fastest way to configure Endress+Hauser field devices is by using our dedicated tool DeviceCare. This tool together with its DTMs (Device Type Managers) offers a convenient and comprehensive solution.

### Your benefits

- Fast and easy installation
- One-click connection to devices
- Device configuration using DTMs
- Automated hardware identification
- Automated DTM catalog update
- Multi-language support
- Touch-enabled for tablet use
- Integrated help, assistants and event messaging

## Easy connection

### Connect to device

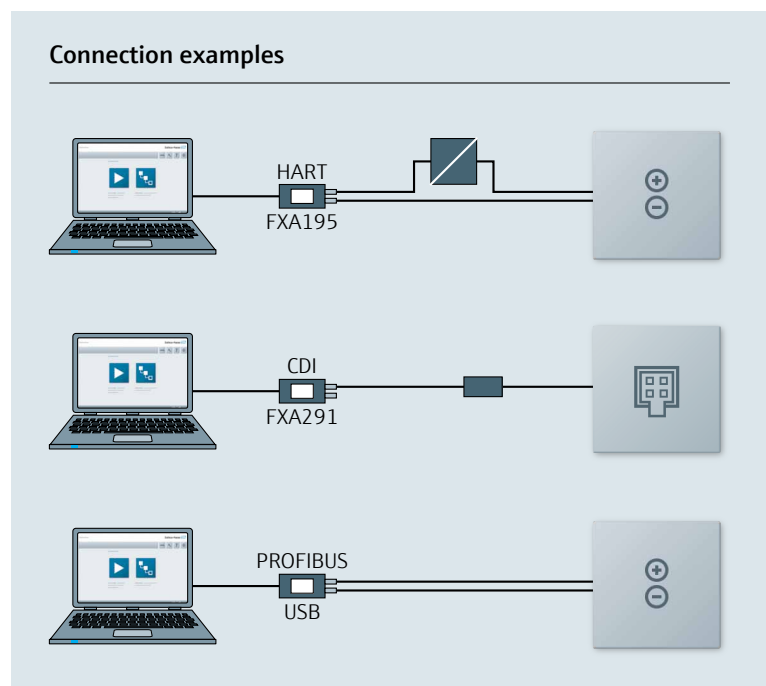
- One-click automatic connection
- Connection assistant

### Supported communication protocols

- HART
- PROFIBUS DP/PA
- FOUNDATION fieldbus
- CDI
- Endress+Hauser Interfaces
- Modbus

### Hardware interfaces

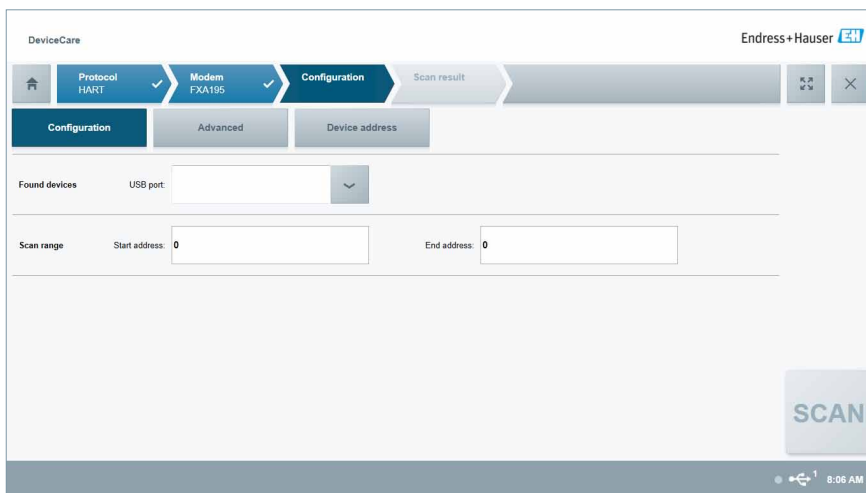
- Modems (USB/RS232)
- TCP/IP
- USB
- PCMCIA



Connection examples with modems

# User-centered design

## Transparent and intuitive device connection and configuration



DeviceCare Connection Assistant

DeviceCare follows a design philosophy that focuses on ease of use:

### Visibility

- Intuitive menu design
- Guided step-by-step approach with indication of status

### Accessibility

- Procedures automated or supported by assistant
- Integrated help
- Feedback messages and event logging

### Legibility and language

- Precise information in multiple languages
- Icons complement written information

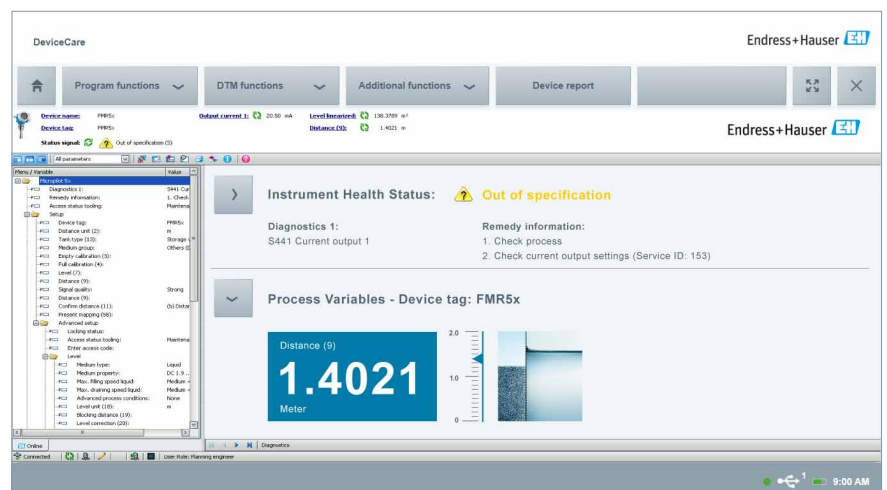
## Integration of DTM

### DTM dashboard

- Aligned layout, design and color climate
- Indication of process value and measurement principle
- Indication of instrument health status according to NAMUR NE 107
- Display of root cause and remedy

### Using DeviceCare and DTMs

- Reading from and writing to device
- Saving and restoring of DTM data
- Support of FDT/DTM functionality and additional functions when provided by DTM
- Printing or saving of device report using FDT print or one-click print



DTM integrated in DeviceCare



## Supplementary documentation

- Plant Asset Management  
Field of Activities Brochure – FA00024S/04/EN
- FieldCare  
Competence Brochure – CP00001S/04/EN
- Field Xpert  
Competence Brochure – CP00014S/04/EN

[www.addresses.endress.com](http://www.addresses.endress.com)