



# Manufacturer Information

for users regarding software updates  
(following the NAMUR recommendation 53)

## AMS HART Package V1.12.00

### 1 Type of Product

- Field device / signal processing device
- Software application for display and monitoring / asset management / handheld terminal etc.
- Modem / interface

Manufacturer : Endress+Hauser Process Solutions AG  
 Product : AMS HART Package V1.12.00  
 Type and order code : n.a.

### 2 Software

Previous software version : 1.11.00  
 New software version : 1.12.00  
 How can the previous software version number be identified? : The current version number could be found on a Device List, the Release Notes or in the name of the ZIP archive.  
 Description of the modification in comparison with the predecessor version : See attachment Release Notes, chapter Revision History.

### 3 Compatibility

Is the new product software compatible with the previous version, installed device driver components and operating tools?

- Yes
- No, reason:

Is a software update generally recommended?

- Yes, reason:

The Update is recommended for the following cases:

- a) You require one new added device driver.
- b) You use a device, where the driver has been improved.

The list of changes regarding new drivers or driver improvements can be found in the attached Release Notes document within chapter Revision History.



## Manufacturer Information

for users regarding software updates  
(following the NAMUR recommendation 53)

No, reason:

### 4 Instruction manual

Is a new instruction manual necessary due to the software modification?

- Yes  
 No

The manual that corresponds to the new software version is:

Product	Communication options	Manual type	Document identifier
N.A.	N.A.	N.A.	N.A.

### 5 Price

Change in price of device in comparison with the predecessor version?

- Yes, new list price and update costs (without installation) are enclosed  
 No

## Release Notes AMS HART Package 1.12.00

Endress+Hauser Process Solutions AG  
Kägenstr. 2  
CH 4153 Reinach/BL  
Switzerland

## Table of Contents

<b>1</b>	<b>Revision History</b>	<b>3</b>
<b>2</b>	<b>Installation</b>	<b>8</b>
<b>3</b>	<b>Deliverables</b>	<b>8</b>
<b>4</b>	<b>Known problems and limitations</b>	<b>8</b>
4.1	General	8
4.2	Level	9
4.3	Pressure	10
4.4	Flow	10
4.5	Analysis	11
4.6	Temperature	11

## 1 Revision History

Package-Version	Addition/Change
V1.12.00	<p><b><u>New Devices added to the package:</u></b></p> <ul style="list-style-type: none"> <li>▪ Promag 53 Rev.9 DD Rev.1</li> <li>▪ Promass 83 Rev.10 DD Rev.1</li> <li>▪ Promag 200 Rev.2 DD Rev. 1</li> <li>▪ Promass 200 Rev.5 DD Rev. 1</li> <li>▪ Liquiline M CM42 pH/ORP Rev.1 DD Rev.1</li> <li>▪ Liquiline M CM42 Cond Rev.1 DD Rev.1</li> <li>▪ Liquiline M CM42 Oxygen Rev.1 DD Rev.1</li> <li>▪ Micropilot FMR5x Rev.2 DD Rev. 1</li> <li>▪ WirelessHART Adapter SWA70 V1.xx.xx Rev.1 DD Rev.4</li> <li>▪ WirelessHART Adapter SWA70 V2.xx.xx Rev.2 DD Rev.2</li> </ul> <p><b><u>Improvements:</u></b></p> <ul style="list-style-type: none"> <li>▪ Cerabar S Rev. 22 DD Rev. 3</li> </ul>
V1.11.00	<p><b><u>New Devices added to the package:</u></b></p> <ul style="list-style-type: none"> <li>▪ Prowirl 200 Rev.2 DD Rev.1</li> <li>▪ iTEMP TMT82 Rev.2 DD Rev.1</li> <li>▪ Promag 100 Rev.2 DD Rev.1</li> <li>▪ Promass 100 Rev.2 DD Rev.1</li> <li>▪ Promag 400 mod. Rev.6 DD Rev.1</li> <li>▪ Prowirl 200 Rev.3 DD Rev.1</li> <li>▪ Cerabar S PMx7x Rev.22 DD Rev.1</li> <li>▪ Deltabar S xMD7x Rev.22 DD Rev.1</li> <li>▪ Deltapilot S FMB70 Rev.22 DD Rev.1</li> </ul>
V1.10.00	<p><b><u>New Devices added to the package:</u></b></p> <ul style="list-style-type: none"> <li>▪ Prowirl 200 Rev.1 DD Rev.1</li> <li>▪ t-mass 150 LT Rev.1 DD Rev.1</li> <li>▪ Promass 200 Rev.4 DD Rev.1</li> <li>▪ Levelflex FMP5x Rev.3 DD Rev.1</li> </ul>
V1.09.00	<p><b><u>New Devices added to the package:</u></b></p> <ul style="list-style-type: none"> <li>▪ Prosonic Flow B 200 Rev. 2 DD Rev.1</li> <li>▪ WirelessHART Adapter SWA70 V2.00.00 Rev.2 DD Rev.1</li> <li>▪ Promag 100 Rev.1 DDRev.1</li> <li>▪ Promass 100 Rev.1 DDRev.1</li> <li>▪ Promag 400 Rev.2 DD Rev.1</li> <li>▪ Liquiline M CM42 pH/ORP Rev.14 DD Rev.1 / (Siehe 4.4)</li> <li>▪ Liquiline M CM42 Cci Rev.17 DD Rev.1 / (Siehe 4.4)</li> <li>▪ Liquiline M CM42 DO Rev.24 DD Rev.1/ (Siehe 4.4)</li> <li>▪ Promag 400 mod. Rev.5 DD Rev.1</li> </ul> <p><b><u>Improvements:</u></b></p> <ul style="list-style-type: none"> <li>▪ Micropilot FMR5x Rev.1: Bugfixes</li> <li>▪ WirelessHART Adapter SWA70 V1.03.00 Rev.1 DD Rev.3</li> <li>▪ Cerabar S Rev.21 DD Rev.4: Russian Update</li> <li>▪ Deltabar S Rev.21 DD Rev.4: Russian Update</li> <li>▪ Deltapilot S Rev.21 DD Rev.4: Russian Update</li> </ul>

V1.08.00	<p><b><u>New Devices added to the package:</u></b></p> <ul style="list-style-type: none"> <li>▪ Promass 200 Rev.3 DD Rev.1</li> <li>▪ Promag 200 Rev.1 DD Rev.1</li> <li>▪ Micropilot FMR5x Rev.1</li> </ul> <p><b><u>Improvements:</u></b></p> <ul style="list-style-type: none"> <li>▪ T-mass 150 Rev.1: no duplicate menus available</li> </ul>
V1.07.00	<p><b><u>New Devices added to the package:</u></b></p> <ul style="list-style-type: none"> <li>▪ Prosonic Flow B 200 Rev.1 DD Rev.1</li> <li>▪ t-mass 150 Rev. 1 DD Rev.1</li> <li>▪ Electronic DP Rev.1 DD Rev.1</li> </ul> <p><b><u>Improvements:</u></b></p> <ul style="list-style-type: none"> <li>▪ Levelflex FMP5x Rev.2: Device Status in the header is actualised</li> </ul>
V1.06.00	<p><b><u>New Devices added to the package:</u></b></p> <ul style="list-style-type: none"> <li>▪ Promag10 Rev.4 DDRev.2</li> <li>▪ Liquiline M CM42 Cci Rev.16 DD Rev.1</li> <li>▪ Liquiline M CM42 DO Rev.23 DD Rev.1</li> <li>▪ Liquiline M CM42 pH/ORP Rev.13 DD Rev.1</li> </ul> <p><b><u>Improvements:</u></b></p> <ul style="list-style-type: none"> <li>▪ Liquicap M Rev.3 DD Rev.2 Improvements at the calibration method / Sensorlength Deltapilot S Rev.21 DD Rev.3 Read-/write issue with the parameter "OUTPUT_FAIL_MODE" resolved.</li> <li>▪ Cerabar S Rev.21 DD Rev.3 Read-/write issue with the parameter "OUTPUT_FAIL_MODE" resolved.</li> <li>▪ Deltabar S Rev.21 DD Rev.3 Read-/write issue with the parameter "OUTPUT_FAIL_MODE" resolved.</li> <li>▪ Modification in the ddinstall.ini to enable the installation in the AMS Version 11.5</li> </ul>
V1.05.01	<p><b><u>New Devices added to the package:</u></b></p> <ul style="list-style-type: none"> <li>• <b>Analysis</b> <ul style="list-style-type: none"> <li>▪ Liquiline M CM44x, V1.02.00 Rev.1</li> <li>▪ Liquiport CSPxx, V1.02.01 Rev.1</li> <li>▪ Liquistation CSFxx, V1.02.01 Rev.1</li> </ul> </li> <li>• <b>Flow</b> <ul style="list-style-type: none"> <li>▪ Prosonic Flow 91 V1.02.00 Rev.3</li> <li>▪ Prosonic Flow 93 V2.03.00 Rev.8</li> </ul> </li> </ul> <p><b><u>Improvements:</u></b></p> <ul style="list-style-type: none"> <li>• <b>Analysis</b>  New improved drivers <ul style="list-style-type: none"> <li>▪ Liquiline CM42 pH, V10.05.xx Rev.12</li> <li>▪ Liquiline CM42 DO, V20.03.xx Rev.22</li> <li>▪ Liquiline CM42 Cci, V13.05.xx Rev.15</li> </ul> </li> <li>• <b>Flow</b> <ul style="list-style-type: none"> <li>▪ Promag 23, V2.02.xx Rev.2 Device can be now installed in AMS V10.x</li> </ul> </li> </ul> <p><b><u>General:</u></b></p> <ul style="list-style-type: none"> <li>• Support of (.ini Date) AMS Version 11.1 for all devices.</li> <li>• Information: DeltabarS and CerabarS Rev21 Evo works only in AMS V9.0 and older Versions.</li> </ul>
V1.04.00	

	<p><b><u>New Devices added to the package:</u></b></p> <ul style="list-style-type: none"> <li>▪ WirelessHART Adapter SWA70 V1.xx.xx Rev.1 DD Rev.1</li> <li>▪ iTEMP TMT82, V1.00.00 Rev.1 DD Rev.1</li> <li>▪ iTEMP TMT162, V1.03.05 Rev.2 DD Rev.3</li> <li>▪ iTEMP TMT142, V1.03.05 Rev.2 DD Rev.3</li> <li>▪ Prowirl 72, V1.06.00 Rev.7 DD Rev.1</li> <li>▪ Prowirl 73, V1.06.00 Rev.7 DD Rev.1</li> <li>▪ Promass 200, V1.01.00 Rev.2 DD Rev.1</li> </ul>
V1.03.00	<p><b><u>New Devices added to the package:</u></b></p> <ul style="list-style-type: none"> <li>• <b>Analysis</b> <ul style="list-style-type: none"> <li>▪ Liquiline CM42 DO, V20.03.01 Rev.22</li> <li>▪ Liquiline CM42 pH, V10.05.01 Rev.12</li> </ul> </li> <li>• <b>Flow</b> <ul style="list-style-type: none"> <li>▪ Promag 50, V2.04.00 Rev.9</li> <li>▪ Promag 51, V2.04.00 Rev.9</li> <li>▪ Promag 53, V2.03.00 Rev.8</li> <li>▪ Promag 55, V1.03.00 Rev.4</li> <li>▪ Prosonic Flow 92, V1.01.01 Rev.2</li> </ul> </li> <li>• <b>Level</b> <ul style="list-style-type: none"> <li>▪ Levelflex FMP5x, V1.01.00 Rev.2</li> </ul> </li> </ul> <p><b><u>Improvements:</u></b></p> <ul style="list-style-type: none"> <li>• <b>Flow</b> <ul style="list-style-type: none"> <li>▪ Promass 40, V3.01.00 Rev.9</li> <li>▪ Promass 80, V3.01.00 Rev.9</li> <li>▪ Promass 83, V3.01.00 Rev.9</li> <li>▪ Promass 84, V3.01.00 Rev.9</li> <li>▪ T-Mass65, V1.01.00 Rev.2</li> </ul> </li> <li>▪ <b>Level</b> <ul style="list-style-type: none"> <li>▪ Gammapiilot M FMG60, V1.03.06 Rev.2 (Driver adapted for lower screen resolutions)</li> </ul> </li> </ul>
V1.02.00	<p><b><u>General:</u></b></p> <ul style="list-style-type: none"> <li>• Support of (.ini Datei) AMS Version 11.1 for all devices.</li> <li>• New .dct File for flow devices added to the package.</li> </ul> <p><b><u>New Devices added to the package:</u></b></p> <ul style="list-style-type: none"> <li>• <b>Flow</b> <ul style="list-style-type: none"> <li>▪ T-Mass 65 1.01.xx Rev.2</li> <li>▪ Liquiline M CCI CM42 Rev.15</li> <li>▪ Prosonic Flow 93 Rev. 7</li> <li>▪ Promass E 2-wire 8E2B Rev. 1</li> </ul> </li> </ul> <p><b><u>Improvements:</u></b></p> <ul style="list-style-type: none"> <li>• <b>Level</b> <ul style="list-style-type: none"> <li>▪ Levelflex FMP5x V1.00.00 Rev.1 Import of std. table / library for HCF changed</li> <li>▪ Gammapiilot M FMG60 Rev2 minor corrections</li> </ul> </li> </ul>

V1.01.00	<p><b><u>New Devices added to the package:</u></b></p> <ul style="list-style-type: none"> <li>• <b>Flow</b> <ul style="list-style-type: none"> <li>▪ Prowirl 72 V1.05.xx Rev.6</li> <li>▪ Prowirl 73 V1.05.xx Rev.6</li> <li>▪ Promass 40 V3.01.00 Rev.9</li> <li>▪ Promass 80 V3.01.00 Rev.9</li> <li>▪ Promass 83 V3.01.00 Rev.9</li> <li>▪ Promass 84 V3.01.00 Rev.9</li> </ul> </li> <li>• <b>Level</b> <ul style="list-style-type: none"> <li>▪ Levelflex FMP5x V1.00.00 Rev.1</li> </ul> </li> </ul>
V1.00.00	<p><b><u>New Devices added to the package:</u></b></p> <ul style="list-style-type: none"> <li>• <b>Flow</b> <ul style="list-style-type: none"> <li>▪ Prowirl 72 V1.04.xx Rev.5</li> <li>▪ Prowirl 73 V1.04.xx Rev.5</li> <li>▪ Promag 53 V2.02.xx Rev.7</li> <li>▪ Promag 55 V1.02.xx Rev.3</li> </ul> </li> <li>• <b>Analysis</b> <ul style="list-style-type: none"> <li>▪ Liquiline M pH/ORP CM42 V10.04.07 Rev.11</li> <li>▪ Liquiline M Cond CM42 V13.04.07 Rev.14</li> <li>▪ Liquiline M DO CM42 V20.02.07 Rev.21</li> </ul> </li> </ul>
2010-01	<p><b><u>New Devices added to the package:</u></b></p> <ul style="list-style-type: none"> <li>• <b>Flow</b> <ul style="list-style-type: none"> <li>▪ Prosonic Flow 91 Rev.2 V1.01.xx</li> </ul> </li> </ul> <p><b><u>Improvements:</u></b></p> <ul style="list-style-type: none"> <li>• <b>Pressure</b> <ul style="list-style-type: none"> <li>▪ Cerabar S PMx7x V2.10.xx Driver modification / Performance AMS</li> <li>▪ Deltabar S xMD7x V2.10.xx Driver modification / Performance AMS</li> </ul> </li> <li>• <b>Level</b> <ul style="list-style-type: none"> <li>▪ Deltapilot S FMB70 V2.10.xx Driver modification / Performance AMS</li> <li>▪ Gammapilot M FMG60 Rev2 V1.03.xx Driver modification</li> </ul> </li> <li>• <b>Flow</b> <ul style="list-style-type: none"> <li>▪ Promag 50 Rev.7 Driver modification / HCF DD Modification</li> <li>▪ Promag 51 Rev.7 Driver modification / HCF DD Modification</li> <li>▪ Promag 50 Rev.8 Driver modification / HCF DD Modification</li> <li>▪ Promag 51 Rev.8 Driver modification / HCF DD Modification</li> </ul> </li> </ul>
2009-03	<p><b><u>New Devices added to the package:</u></b></p> <ul style="list-style-type: none"> <li>• <b>Flow</b> <ul style="list-style-type: none"> <li>▪ Promag 10 Rev.1 - Rev.2 - Rev.3 - Rev.4</li> <li>▪ Promag 50 Rev.8</li> <li>▪ Promag 51 Rev.8</li> </ul> </li> <li>• <b>Level</b> <ul style="list-style-type: none"> <li>▪ Levelflex M Interface Rev.8</li> <li>▪ Prosonic S Rev.1</li> <li>▪ Prosonic S Rev.2</li> <li>▪ Prosonic S Rev.3</li> </ul> </li> </ul>



	<p><b><u>Improvements:</u></b></p> <ul style="list-style-type: none"><li>• Promag 50 Rev.7 Driver modification</li><li>• Promag 51 Rev.7 Driver modification</li></ul>
2009-02	<p><b><u>General:</u></b></p> <ul style="list-style-type: none"><li>• Package Version introduced, Revision History Introduced</li></ul> <p><b><u>New Devices added to the package:</u></b></p> <ul style="list-style-type: none"><li>• <b>Pressure</b><ul style="list-style-type: none"><li>▪ Cerabar M / PMx5x</li><li>▪ Deltabar M / PMD55</li></ul></li><li>• <b>Level</b><ul style="list-style-type: none"><li>▪ Deltapilot M / FMB5x</li><li>▪ Waterpilot / FMX21</li></ul></li></ul> <p><b><u>Improvements:</u></b></p> <ul style="list-style-type: none"><li>• Prowirl 72 Rev.4 Driver modification</li><li>• .ini file for all devices updated for AMS Version 10.1 and AMS Version 10.0 by some devices removed.</li></ul>

## 2 Installation

This chapter describes the standalone installation of the Endress+Hauser drivers.

- Verify that no AMS application is running. Use the DD installation utility Add Device Type from AMS to install the DDs. During the installation warnings could appear in fact of already installed files which are used in different setups. For the DD installation in refer to the AMS related installation manual delivered by Emerson.
- If available in the folder, copy the file `endress_hauser.dct` and `endress_hauser.dc8` from AMS installation package in to folder:

[AMS Installation Directory] AMS\ Devices\ HART\ 000011  
(e.g. C:\ Program Files\ AMS\ Devices\ HART\ 000011)

## 3 Deliverables

Component	Description of supported products
AMS_HA_ANALYSIS_Packages_1_11_00.zip	DD package HART for all Analytical devices
AMS_HA_FLOW_Packages_1_11_00.zip	DD package HART for all Flow devices
AMS_HA_LEVEL_Packages_1_11_00.zip	DD package HART for all Level devices
AMS_HA_PRESSURE_Packages_1_11_00.zip	DD package HART for all Pressure devices
AMS_HA_TEMPERATURE_Packages_1_11_00.zip	DD package HART for all Temperature devices
AMS_HA_COMPONENTS_Packages_1_11_00.zip	DD package HART for all Component devices

## 4 Known problems and limitations

### 4.1 General

Some drivers can not be installed in the AMS version 10.0. There is an error in the AMS software. This problem is resolved in AMS version 10.1.

Endress+Hauser USB HART Modem FXA195 does not work with AMS. Using it may lead to AMS program shut down.

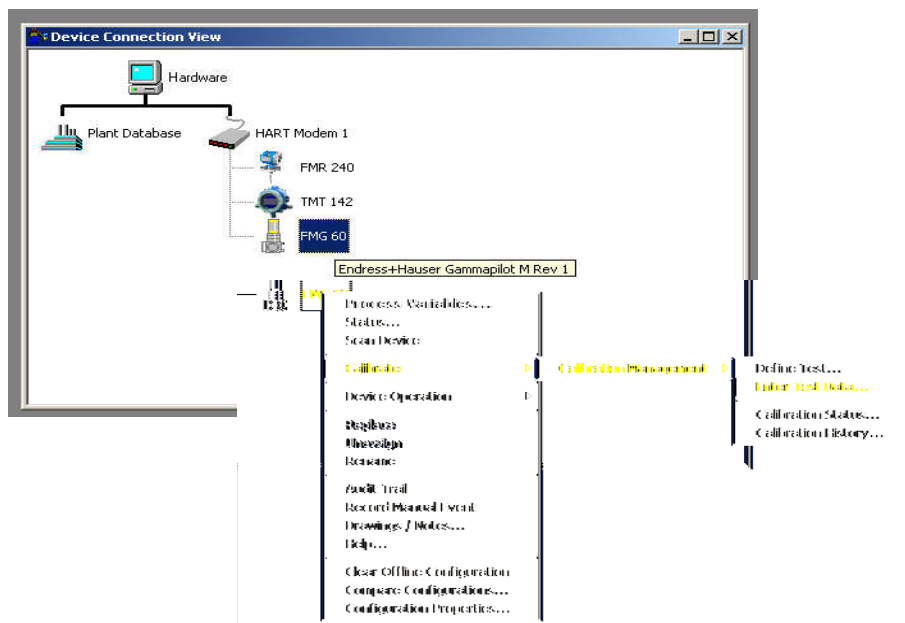
Some drivers have different problems in AMS version 11.5. There is an error in the AMS software (e.g. faulty event logbook, pop ups with error messages ).

This problems are resolved with an Emerson AMS patch (KBANK-1200-0029).

## 4.2 Level

### Gammapilot M

- In the functions group "Basic Setup" are the parameters "Operating mode" and "Measurement mode" only once writeable. After a RESET to the default configuration (see Operating instruction BA236F page 38) can these two parameters written again.
- In the functions group Calibrate , if "Enter Test Data" will be selected a information box will pop up. Confirm with OK .



Message:



### Deltapilot S evo Dev.Rev.21 DDRev.01

- It is just possible to install this driver version until AMS version 9.x. In AMS version 10.0 or higher, the driver DRev21 DD02 is automatically assigned.

### Levelflex FMP5x Dev.Rev.2 DDRev.1

- Reading the echocurve does just work correctly with the DeltaV system 11.3 (AMS 11.1 or AMS 11.5). With the DeltaV-system 10.3 (with any AMS versions) the method aborts at 10%.

## Pressure

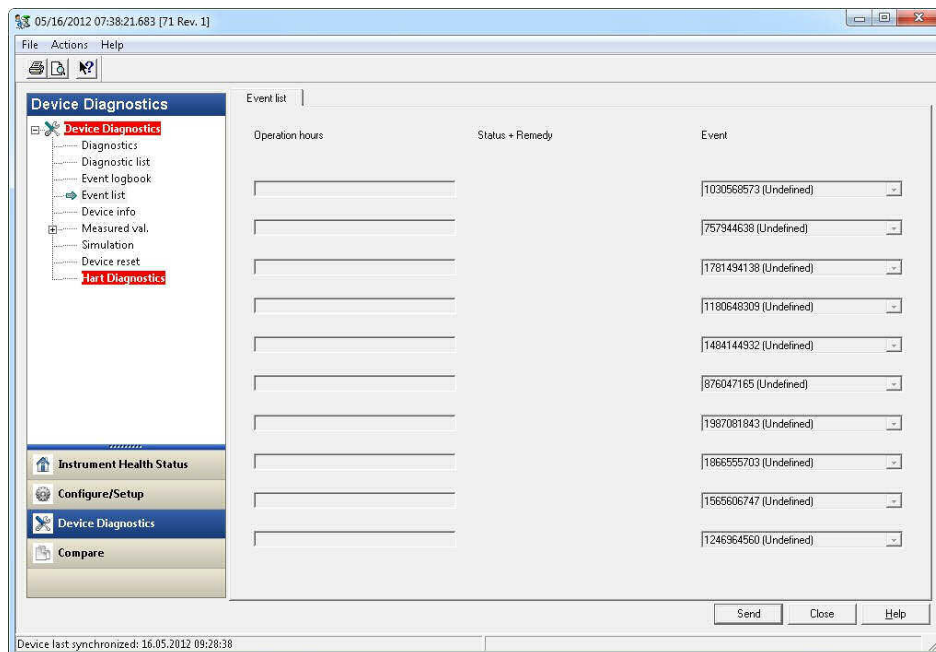
### Cerabar S evo / Deltabar S evo DRev21 DD01

- It is just possible to install this driver version until AMS version 9.x. In AMS version 10.0 or higher, the driver DRev21 DD02 is automatically assigned.

## 4.3 Flow

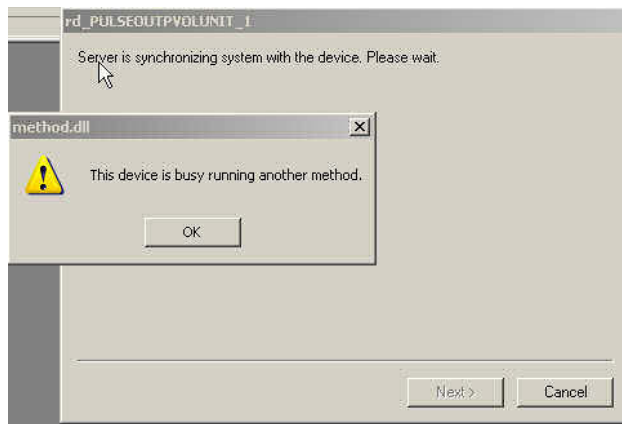
### Prosonic Flow B 200 / AMS 11.5

- The Eventlist was not supported by AMS 11.5



### Prowirl 72/73

- During configuring the functions group **Sys. Units** the values of each unit will not be update automatically. We recommend to switch to another function group and back. An information box will pop up during that process. Confirm with **OK** .



#### 4.4 Analysis

Liquiline M CM42 pH/ORP Rev.14 DD Rev.1:

In AMS11.1 no units are displayed on the main value. In AMS11.5 and AMS12 the units are displayed to the main value.

Liquiline M CM42 Cci Rev.17 DD Rev.1:

In AMS11.1 no units are displayed on the main value. In AMS11.5 and AMS12 the units are displayed to the main value.

Liquiline M CM42 DO Rev.24 DD Rev.1:

In AMS11.1 no units are displayed on the main value. In AMS11.5 and AMS12 the units are displayed to the main value.

#### 4.5 Temperature

Currently there are no problems and limitations known.

# Endress+Hauser AMS HART Device List

## Package 1.12.00

Type	Device		Dev Rev	DD Rev	Description	Available on	Min Required AMS Version	Software Version	Code	
									Manufacturer	Device
<b>Pressure</b>	Cerabar M	PMx 4X	1	1	Absolute / Relative	AMS 6.x CD	6.x	V 1.0	000011	000e
	Cerabar M (2)	PMx 5x	1	1	Absolute	E+H Homepage	10.1	V 1.00.00	000011	0019
	Cerabar S	PMx x3x	3	2	Absolute	AMS 6.x CD	6.x	V 3.x	000011	0007
	Cerabar S	PMx x3x	5	1	Absolute	AMS 6.x CD	6.x	V 5.x	000011	0007
	Cerabar S	PMx x3x	7	1	Absolute	AMS 6.x CD	6.x	V 7.0	000011	0007
	Cerabar S (1)	PMx 7x	10	1	Absolute	E+H Homepage	6.x	V 1.0	000011	0018
	Cerabar S (1)	PMx 7x	20	1	Absolute	E+H Homepage	6.x	V 2.0	000011	0018
	Cerabar S (2)	PMx 7x	21	3	Absolute	E+H Homepage	10.1	V 2.10.xx	000011	0018
	Cerabar S	PMx 7x	21	4	Absolute	E+H Homepage	10.x	2.11.xx	000011	0018
	Cerabar S	PMx 7x	22	1	Absolute	E+H Homepage	10.5	2.20.xx	000011	0018
	<b>Cerabar S</b>	<b>PMx 7x</b>	<b>22</b>	<b>3</b>	<b>Absolute</b>	<b>E+H Homepage</b>	<b>10.5</b>	<b>2.20.xx</b>	<b>000011</b>	<b>0018</b>
	Deltabar M (2)	PMD55	1	1	Differential	E+H Homepage	10.1	V 1.00.00	000011	0021
	Deltabar S	xMD x3x	2	2	Differential	AMS 6.x CD	6.x	V 2.x	000011	0009
	Deltabar S	xMD x3x	5	1	Differential	AMS 6.x CD	6.x	V 5.x	000011	0009
	Deltabar S	xMD x3x	7	1	Differential	AMS 6.x CD	6.x	V 7.0	000011	0009
Deltabar S (1)	xMD 7x	10	1	Differential	E+H Homepage	6.x	V 1.0	000011	0017	
Deltabar S (1)	xMD 7x	20	1	Differential	E+H Homepage	6.x	V 2.0	000011	0017	
Deltabar S (2)	xMD 7x	21	3	Differential	E+H Homepage	10.1	V 2.10.xx	000011	0017	
Deltabar S	xMD 7x	21	4	Differential	E+H Homepage	10.1	V 2.11.xx	000011	0017	
Deltabar S	xMD 7x	22	1	Differential	E+H Homepage	10.5	V 2.20.xx	000011	0017	
<b>Level</b>	Deltapilot M (2)	FMB 5x	1	1	Hydrostatic	E+H Homepage	10.1	V 1.00.00	000011	0023
	Electronic DP	FMD72	1	1	Differential	E+H Homepage	10.1	V1.00.00	000011	0027
	Deltapilot S (2)	FMB 70	21	3	Hydrostatic	E+H Homepage	10.1	V 2.10.xx	000011	001a
	Deltapilot S	FMB 70	21	4	Hydrostatic	E+H Homepage	10.1	V 2.11.xx	000011	001a
	Deltapilot S	FMB 70	22	1	Hydrostatic	E+H Homepage	10.5	V 2.20.xx	000011	001a
	Gammapilot M	FMG 60	1	1	Nuclear	E+H Homepage	6.x	V 1.01.xx	000011	0013
	Gammapilot M	FMG 60	2	1	Nuclear	E+H Homepage	6.x	V 1.02.xx	000011	0013
	Gammapilot M	FMG 60	2	1	Nuclear	E+H Homepage	6.x	V 1.03.xx	000011	0013

# Endress+Hauser AMS HART Device List

## Package 1.12.00

Type	Device	Dev Rev	DD Rev	Description	Available on	Min Required AMS Version	Software Version	Code		
								Manufacturer	Device	
	Levelflex (2)	FMP 5x	1	1.1	Echo	E+H Homepage	9.x	V 1.00.00	000011	0022
	Levelflex (2)	FMP 5x	2	1	Echo	E+H Homepage	10.x	V 1.01.xx	000011	0022
	Levelflex (2)	FMP 5x	3	1	Echo	E+H Homepage	10.x	V 1.02.xx	000011	0022
	Levelflex	FMP 2xx	2	1	Capacitiv	AMS 6.x CD	6.x	V 2.x	000011	000d
	Levelflex M (1)	FMP 4x	4	1	Radar	E+H Homepage	6.x	V 1.04.00	000011	0012
	Levelflex M (1)	FMP 4x	2	1	Radar	E+H Homepage	6.x	V 1.02.00	000011	0012
	Levelflex M Int (1)	FMP4x	8	1		E+H Homepage	6.x	V 1.08.00	000011	0020
	Liquicap M	FMI 5x	3	1.1	Capacitiv	E+H Homepage	6.x	V 1.03.xx	000011	001d
	Micropilot	FMR 130	3	1	Microwave - Radar	AMS 6.x CD	6.x	V 3.x	000011	0006
	Micropilot	FMR 13x	4	1	Microwave - Radar	E+H Homepage	6.x	V 3.x	000011	0006
	Micropilot M (1)	FMR 23x	1	1	Microwave - Radar	AMS 6.x CD	6.x	V 1.01.00	000011	000f
	Micropilot M (1)	FMR 23x	2	1	Microwave - Radar	AMS 6.x CD	6.x	V 1.02.0x	000011	000f
	Micropilot M (1)	FMR 24x-25x	5	1	Microwave - Radar	E+H Homepage	6.x	V 1.05.00	000011	001e
	Micropilot M (1)	FMR 2xx	1	2	Microwave - Radar	E+H Homepage	6.x	V 1.01.02	000011	000f
	Micropilot M (1)	FMR 2xx	2	1	Microwave - Radar	E+H Homepage	6.x	V 1.02.0x	000011	000f
	Micropilot M (1)	FMR 2xx	4	1	Microwave - Radar	E+H Homepage	6.x	V 1.04.00	000011	000f
	Micropilot M (1)	FMR250	4	1	Microwave - Radar	E+H Homepage	6.x	V 1.04.00	000011	001e
	Micropilot S (1)	FMR53x	2	1	Radar	E+H Homepage	6.x	V 1.02.0x	000011	0010
	Micropilot S (1)	FMR540	1	1	Radar	E+H Homepage	6.x	V 1.01.0x	000011	001f
	Micropilot	FMR5x	1	1	Radar	E+H Homepage	10.x	V1.00.xx	000011	0028
	<b>Micropilot</b>	<b>FMR5x</b>	<b>2</b>	<b>1</b>	<b>Radar</b>	<b>E+H Homepage</b>	<b>12</b>	<b>V1.01.xx</b>	<b>000011</b>	<b>0028</b>
	Multicap	FEC 12	1	2	Capacitiv	AMS 6.x CD	6.x	V 1.x	000011	0008
	Prosonic M (1)	FMU 4x	4	1	Ultrasonic	E+H Homepage	6.x	V 1.04.00	000011	0011
	Prosonic M (1)	FMU 4x	2	1	Ultrasonic	E+H Homepage	6.x	V 1.02.00	000011	0011
	Prosonic M (1)	FMU 4x	2	2	Ultrasonic	In test phases	6.x	V 01.02.00	000011	0011
	Prosonic S (1)	FMU 90	1	1	Ultrasonic	E+H Homepage	6.x	V 01.00.02	000011	001b
	Prosonic S (1)	FMU 90	2	1	Ultrasonic	E+H Homepage	6.x	V 02.00.xx	000011	001b
	Prosonic S (1)	FMU 90	3	1	Ultrasonic	E+H Homepage	6.x	V 02.01.xx	000011	001b

# Endress+Hauser AMS HART Device List

## Package 1.12.00

Type	Device		Dev Rev	DD Rev	Description	Available on	Min Required AMS Version	Software Version	Code	
									Manufacturer	Device
	Prosonic T	FMU 231	1	1	Ultrasonic	AMS 6.x CD	6.x	V 2.x	000011	000a
	Prosonic T	FMU 231	2	1	Ultrasonic	AMS 6.x CD	6.x	V 2.x	000011	000a
	Prosonic T	FMU 231	2	2	Ultrasonic	AMS 6.x CD	6.x	V 2.x	000011	000a
	Waterpilot (2)	FMX 21	1	1		E+H Homepage	9.x	V 1.00.00	000011	0024
Analytical	Liquiline M pH/ORP	CM42	1	1	pH/ORP	E+H Homepage	11.5	V 2.01.00	000011	11A0
	Liquiline M pH/ORP	CM42	1	1	Conductivity	E+H Homepage	11.5	V 2.01.00	000011	11A1
	Liquiline M pH/ORP	CM42	1	1	Oxygen	E+H Homepage	11.5	V 2.01.00	000011	11A2
	Liquiline M pH/ORP (1)	CM42	10	1	pH/ORP	E+H Homepage	6.x	V 10.02.00 V 10.03.00 V 10.04.00 - 05	000011	008f
	Liquiline M pH/ORP (2)	CM42	11	1	pH/ORP	E+H Homepage	10.1	V 10.04.07	000011	008f
	Liquiline M pH/ORP (2)	CM42	12	2	pH/ORP	E+H Homepage	10.1	V 10.05.xx	000011	008f
	Liquiline M pH/ORP (2)	CM42	13	1	pH/ORP	E+H Homepage	10.1	V 10.06.xx	000011	008f
	Liquiline M pH/ORP	CM42	14	1	pH/ORP	E+H Homepage	11.1	V 10.07.zz	000011	008f
	Liquiline M Cci (1)	CM42	13	1	Conductivity	E+H Homepage	6.x	V 13.01.00 V 13.02.00 V 13.03.00 V 13.04.00 - 04	000011	0090
	Liquiline M Cci (2)	CM42	14	1	Conductivity	E+H Homepage	10.1	V 13.04.07	000011	0090
	Liquiline M Cci (2)	CM42	15	2	Conductivity	E+H Homepage	10.1	V 13.05.xx	000011	0090
	Liquiline M Cci (2)	CM42	16	1	Conductivity	E+H Homepage	10.1	V 13.06.xx	000011	0090
	Liquiline M Cci	CM42	17	1	Conductivity	E+H Homepage	11.1	V 13.07.zz	000011	0090
	Liquiline M DO (2)	CM42	21	1	DO	E+H Homepage	10.5	V 20.02.07	000011	009b
	Liquiline M DO (2)	CM42	22	2	DO	E+H Homepage	10.1	V 20.03.xx	000011	009b
	Liquiline M DO (2)	CM42	23	1	DO	E+H Homepage	10.1	V 20.04.00	000011	009b
	Liquiline M DO	CM42	24	1	DO	E+H Homepage	11.1	V 20.05.zz	000011	009b
	Liquiline M (2)	CM44	1	1		E+H Homepage	10.1	V1.02.00	000011	119C
	Liquiport (2)	CSPxx	1	1		E+H Homepage	10.1	V1.02.01	000011	119E
	Liquistation (2)	CSFxx	1	1		E+H Homepage	10.1	V1.02.01	000011	119D
Flow	Promag 10		2	1		E+H Homepage	6.x	V 1.01.00	000011	0045



# Endress+Hauser AMS HART Device List

## Package 1.12.00

Type	Device	Dev Rev	DD Rev	Description	Available on	Min Required AMS Version	Software Version	Code	
								Manufacturer	Device
	Promag 10	3	1		E+H Homepage	6.x	V 1.02.00	000011	0045
	Promag 10 (2)	4	1		E+H Homepage	10.1	V 1.03.00	000011	0045
	Promag 10 (2)	4	2		E+H Homepage	10.1	V1.04.00	000011	0045
	Promag 23 (1)	1	1	2 - wire Magnetic	AMS 6.x CD	6.x	V 2.00.00 (DE/EN)	000011	0046
	Promag 23 (1)	1	1	2 - wire Magnetic	AMS 6.x CD	6.x	V 2.01.00 (IT/FR)	000011	0046
	Promag 23 (1)	2	1	2 - wire Magnetic	E+H Homepage	10.x	V 2.02.xx (DE/EN)	000011	0046
	Promag 23 (1)	2	1	2 - wire Magnetic	E+H Homepage	10.x	V 2.03.xx (IT/FR)	000011	0046
	Promag 33	2	1	Electromagnetic	E+H Homepage	6.x	V 2.04.02	000011	0032
	Promag 35 S	1	1	High Performance Magmeter	AMS 6.x CD	6.x	V 2.04.02	000011	0036
	Promag 50 (1)	1	2	Magnetic	AMS 6.x CD	6.x	V 1.01.01	000011	0041
	Promag 50 (1)	2	1	Magnetic	E+H Homepage	6.x	V 1.02.00	000011	0041
	Promag 50 (1)	3	1	Magnetic	E+H Homepage	6.x	V 1.04.00	000011	0041
	Promag 50 (1)	4	1	Magnetic	E+H Homepage	6.x	V 1.06.xx	000011	0041
	Promag 50 (1)	5	1	Magnetic	E+H Homepage	6.x	V 2.00.00	000011	0041
	Promag 50 (1)	6	1	Magnetic	E+H Homepage	6.x	V 2.01.xx	000011	0041
	Promag 50 (2)	7	1	Magnetic	E+H Homepage	10.1	V 2.02.00	000011	0041
	Promag 50 (2)	8	1	Magnetic	E+H Homepage	10.1	V 2.03.00	000011	0041
	Promag 50 (2)	9	1	Magnetic	E+H Homepage	10.x	V 2.04.00	000011	0041
	Promag 51 (1)	2	1	Magnetic - custody Transfer	E+H Homepage	6.x	V 1.02.00	000011	0043
	Promag 51 (1)	3	1	Magnetic - custody Transfer	E+H Homepage	6.x	V 1.04.00	000011	0043
	Promag 51 (1)	4	1	Magnetic - custody Transfer	E+H Homepage	6.x	V 1.06.xx	000011	0043
	Promag 51 (1)	5	1	Magnetic - custody Transfer	E+H Homepage	6.x	V 2.00.00	000011	0043
	Promag 51 (1)	6	1	Magnetic - custody Transfer	E+H Homepage	6.x	V 2.01.xx	000011	0043
	Promag 51 (2)	7	1	Magnetic	E+H Homepage	10.1	V 2.02.00	000011	0043
	Promag 51 (2)	8	1	Magnetic	E+H Homepage	10.1	V 2.03.00	000011	0043
	Promag 51 (2)	9	1	Magnetic	E+H Homepage	10.x	V 2.04.00	000011	0043
	Promag 53 (1)	1	1	Magnetic	AMS 6.x CD	6.x	V 1.01.01	000011	0042
	Promag 53 (1)	2	1	Magnetic	E+H Homepage	6.x	V 1.02.00	000011	0042

# Endress+Hauser AMS HART Device List

## Package 1.12.00

Type	Device	Dev Rev	DD Rev	Description	Available on	Min Required AMS Version	Software Version	Code	
								Manufacturer	Device
	Promag 53 (1)	3	1	Magnetic	E+H Homepage	6.x	V 1.04.00	000011	0042
	Promag 53 (1)	4	1	Magnetic	E+H Homepage	6.x	V 1.06.xx	000011	0042
	Promag 53 (1)	5	1	Magnetic	E+H Homepage	6.x	V 2.00.00	000011	0042
	Promag 53 (1)	6	1	Magnetic	E+H Homepage	6.x	V 2.01.xx	000011	0042
	Promag 53 (2)	7	1	Magnetic	E+H Homepage	10.1	V 2.02.xx	000011	0042
	Promag 53 (2)	8	1	Magnetic	E+H Homepage	10.x	V 2.03.xx	000011	0042
	<b>Promag 53 (2)</b>	<b>9</b>	<b>1</b>	<b>Magnetic</b>	<b>E+H Homepage</b>	<b>10.x</b>	<b>V 2.07.xx</b>	<b>000011</b>	<b>1142</b>
	Promag 55 (1)	1	1	Magnetic	E+H Homepage	6.x	V 1.00.00	000011	0044
	Promag 55 (1)	2	1	Magnetic	E+H Homepage	6.x	V 1.01.00	000011	0044
	Promag 55 (2)	3	1	Magnetic	E+H Homepage	10.1	V 1.02.00	000011	0044
	Promag 55 (2)	4	1	Magnetic	E+H Homepage	10.x	V 1.03.00	000011	0044
	Promag 100	1	1	Magnetic	E+H Homepage	10.5	V1.00.xx	000011	003A
	Promag 100	2	1	Magnetic	E+H Homepage	10.5	V1.01.xx	000011	003A
	Promag 200	1	1	Magnetic	E+H Homepage	10.5	V 1.00.xx	000011	0048
	<b>Promag 200</b>	<b>2</b>	<b>1</b>	<b>Magnetic</b>	<b>E+H Homepage</b>	<b>10.5</b>	<b>V 1.01.xx</b>	<b>000011</b>	<b>0048</b>
	Promag 400	2	1	Magnetic	E+H Homepage	10.5	V1.01.xx	000011	0047
	Promag 400 mod.	5	1	Magnetic	E+H Homepage	10.5	V1.04.xx	000011	0067
	Promag 400 mod.	6	1	Magnetic	E+H Homepage	10.5	V1.05.xx	000011	0067
	Promass 40 (1)	1	1	Coriolis - Mass	AMS 6.x CD	6.x	V 1.00.01	000011	0053
	Promass 40 (1)	2	1	Coriolis - Mass	E+H Homepage	6.x	V 1.02.00	000011	0053
	Promass 40 (1)	3	1	Coriolis - Mass	E+H Homepage	6.x	V 1.04.00	000011	0053
	Promass 40 (1)	4	1	Coriolis - Mass	E+H Homepage	6.x	V 1.05.00	000011	0053
	Promass 40 (1)	5	1	Coriolis - Mass	E+H Homepage	6.x	V 1.06.00	000011	0053
	Promass 40 (1)	6	1	Coriolis - Mass	E+H Homepage	6.x	V 2.00.00	000011	0053
	Promass 40 (1)	7	1	Coriolis - Mass	E+H Homepage	6.x	V 2.01.00	000011	0053
	Promass 40 (1)	8	1	Coriolis - Mass	E+H Homepage	6.x	V 2.02.xx - 3.00.xx	000011	0053
	Promass 40 (2)	9	1.1	Coriolis - Mass	E+H Homepage	10.1	V 3.01.00	000011	0053
	Promass 60	1	1	Mass Meter	AMS 6.x CD	6.x	V 3.01.00	000011	0039

# Endress+Hauser AMS HART Device List

## Package 1.12.00

Type	Device	Dev Rev	DD Rev	Description	Available on	Min Required AMS Version	Software Version	Code	
								Manufacturer	Device
	Promass 60	2	2	Mass Meter	E+H Homepage	6.x	V 3.02.00	000011	0039
	Promass 60	3	1	Mass Meter	E+H Homepage	6.x	V 3.02.00	000011	0039
	Promass 63	2	1	Coriolis - Mass	E+H Homepage	6.x	V 3.00.00	000011	0034
	Promass 63	3	3	Coriolis - Mass	E+H Homepage	6.x	V 3.02.00	000011	0034
	Promass 63	4	1	Coriolis - Mass	E+H Homepage	6.x	V 3.02.00	000011	0034
	Promass 63	4	2	Coriolis - Mass	E+H Homepage	6.x	V 3.02.00	000011	0034
	Promass 80 (1)	1	1	Coriolis - Mass	AMS 6.x CD	6.x	V 1.00.01	000011	0050
	Promass 80 (1)	2	1	Coriolis - Mass	E+H Homepage	6.x	V 1.02.00	000011	0050
	Promass 80 (1)	3	1	Coriolis - Mass	E+H Homepage	6.x	V 1.04.00	000011	0050
	Promass 80 (1)	4	1	Coriolis - Mass	E+H Homepage	6.x	V 1.05.00	000011	0050
	Promass 80 (1)	5	1	Coriolis - Mass	E+H Homepage	6.x	V 1.06.00	000011	0050
	Promass 80 (1)	6	1	Coriolis - Mass	E+H Homepage	6.x	V 2.00.00	000011	0050
	Promass 80 (1)	7	1	Coriolis - Mass	E+H Homepage	6.x	V 2.01.00	000011	0050
	Promass 80 (1)	8	1	Coriolis - Mass	E+H Homepage	6.x	V 2.02.xx - 3.00.xx	000011	0050
	Promass 80 (2)	9	1.1	Coriolis - Mass	E+H Homepage	10.1	V 3.01.00	000011	0050
	Promass E 2-wire 8E2B	1	1	Coriolis - Mass - 2wire	E+H Homepage	10.5	V1.00.01	000011	0054
	Promass 83 (1)	1	1	Coriolis - Mass	AMS 6.x CD	6.x	V 1.00.01	000011	0051
	Promass 83 (1)	2	1	Coriolis - Mass	E+H Homepage	6.x	V 1.02.00	000011	0051
	Promass 83 (1)	3	1	Coriolis - Mass	E+H Homepage	6.x	V 1.04.00	000011	0051
	Promass 83 (1)	4	1	Coriolis - Mass	E+H Homepage	6.x	V 1.05.00	000011	0051
	Promass 83 (1)	5	1	Coriolis - Mass	E+H Homepage	6.x	V 1.06.00	000011	0051
	Promass 83 (1)	6	1	Coriolis - Mass	E+H Homepage	6.x	V 2.00.00	000011	0051
	Promass 83 (1)	7	1	Coriolis - Mass	E+H Homepage	6.x	V 2.01.00	000011	0051
	Promass 83 (1)	8	1	Coriolis - Mass	E+H Homepage	6.x	V 2.02.xx - 3.00.xx	000011	0051
	Promass 83 (2)	9	1.1	Coriolis - Mass	E+H Homepage	10.1	V 3.01.xx	000011	0051
	<b>Promass 83 (2)</b>	<b>10</b>	<b>1</b>	<b>Coriolis - Mass</b>	<b>E+H Homepage</b>	<b>10.1</b>	<b>V 3.07.00</b>	<b>000011</b>	<b>1151</b>
	Promass 84 (1)	6	1	Coriolis - Mass	E+H Homepage	6.x	V 2.00.00	000011	0052
	Promass 84 (1)	7	1	Coriolis - Mass	E+H Homepage	6.x	V 2.01.00	000011	0052

# Endress+Hauser AMS HART Device List

## Package 1.12.00

Type	Device	Dev Rev	DD Rev	Description	Available on	Min Required AMS Version	Software Version	Code	
								Manufacturer	Device
	Promass 84 (1)	8	1	Coriolis - Mass	E+H Homepage	6.x	V 2.02.xx - 3.00.xx	000011	0052
	Promass 84 (2)	9	1.1	Coriolis - Mass	E+H Homepage	10.1	V 3.01.xx	000011	0052
	Promass 100	1	1	Coriolis - Mass	E+H Homepage	10.5	V1.00.xx	000011	004A
	Promass 100	2	1	Coriolis - Mass	E+H Homepage	10.5	V1.01.xx	000011	004A
	Promass 200	3	1	Coriolis - Mass	E+H Homepage	10.5	V 1.02.xx	000011	0054
	Promass 200	4	1	Coriolis - Mass	E+H Homepage	10.5	V 1.03.xx	000011	0054
	<b>Promass 200</b>	<b>5</b>	<b>1</b>	<b>Coriolis - Mass</b>	<b>E+H Homepage</b>	<b>10.5</b>	<b>V1.04.xx</b>	<b>000011</b>	<b>0054</b>
	Prosonic Flow DMU 93	1	1	Ultrasonic	E+H Homepage	6.x	V 1.00.00	000011	0040
	Prosonic Flow DMU 93	2	1	Ultrasonic	E+H Homepage	6.x	V 1.01.00	000011	0041
	Prosonic Flow 90 (1)	1	1	Ultrasonic	E+H Homepage	6.x	V 1.0x.00	000011	0058
	Prosonic Flow 90 (1)	2	1	Ultrasonic	E+H Homepage	6.x	V 1.0x.0x	000011	0058
	Prosonic Flow 90 (1)	3	1	Ultrasonic	E+H Homepage	6.x	V 1.06.00	000011	0058
	Prosonic Flow 90 (1)	4	1	Ultrasonic	E+H Homepage	6.x	V 2.00.00	000011	0058
	Prosonic Flow 90 (1)	5	1	Ultrasonic	E+H Homepage	6.x	V 2.01.00	000011	0058
	Prosonic Flow 91 (1)	1	1	Ultrasonic	E+H Homepage	6.x	V 1.00.0x	000011	0062
	Prosonic Flow 91 (2)	2	1	Ultrasonic	E+H Homepage	10.1	V 1.01.xx	000011	0062
	Prosonic Flow 91 (2)	3	1	Ultrasonic	E+H Homepage	10.1	V1.02.xx	000011	0062
	Prosonic Flow 92 (1)	1	1	Ultrasonic	E+H Homepage	6.x	V 1.00.0x	000011	0061
	Prosonic Flow 92 (1)	2	1	Ultrasonic	E+H Homepage	10.5	V 1.01.xx	000011	0061
	Prosonic Flow 93 (1)	1	1	Ultrasonic	E+H Homepage	6.x	V 1.0x.00	000011	0059
	Prosonic Flow 93 (1)	2	1	Ultrasonic	E+H Homepage	6.x	V 1.04.0x	000011	0059
	Prosonic Flow 93 (1)	4	1	Ultrasonic	E+H Homepage	6.x	V 1.06.00	000011	0059
	Prosonic Flow 93 (1)	5	1	Ultrasonic	E+H Homepage	6.x	V 2.00.00	000011	0059
	Prosonic Flow 93 (1)	6	1	Ultrasonic	E+H Homepage	6.x	V 2.01.00	000011	0059
	Prosonic Flow 93 (1)	7	1	Ultrasonic	E+H Homepage	10.5	V 2.02.00	000011	0059
	Prosonic Flow 93 (1)	8	1	Ultrasonic	E+H Homepage	10.5	V2.03.xx	000011	0059
	Prosonic Flow B 200	1	1	Ultrasonic	E+H Homepage	10.5	V 1.00.xx	000011	005A
	Prosonic Flow B 200	2	1	Ultrasonic	E+H Homepage	10.5	V 1.01.xx	000011	005A

# Endress+Hauser AMS HART Device List

## Package 1.12.00

Type	Device	Dev Rev	DD Rev	Description	Available on	Min Required AMS Version	Software Version	Code	
								Manufacturer	Device
	Prowirl 70	1	2	Vortex	AMS 6.x CD	6.x	V 1.1.01	000011	0033
	Prowirl 72	1	1	Vortex	E+H Homepage	6.x	V 1.00.00	000011	0056
	Prowirl 72	2	1	Vortex	E+H Homepage	6.x	V 1.01.0x	000011	0056
	Prowirl 72	3	1	Vortex	E+H Homepage	6.x	V 1.02.0x	000011	0056
	Prowirl 72	4	1	Vortex	E+H Homepage	6.x	V 1.03.0x	000011	0056
	Prowirl 72 (2)	5	1	Vortex	E+H Homepage	10.1	V 1.04.0x	000011	0056
	Prowirl 72 (2)	6	1	Vortex	E+H Homepage	10.1	V 1.05.0x	000011	0056
	Prowirl 72 (2)	7	1	Vortex	E+H Homepage	10.5	V 1.06.0x	000011	0056
	Prowirl 73 (1)	1	1	Vortex	E+H Homepage	6.x	V 1.00.00	000011	0057
	Prowirl 73 (1)	2	1	Vortex	E+H Homepage	6.x	V 1.01.0x	000011	0057
	Prowirl 73 (1)	3	1	Vortex	E+H Homepage	6.x	V 1.02.0x	000011	0057
	Prowirl 73 (1)	4	1	Vortex	E+H Homepage	6.x	V 1.03.0x	000011	0057
	Prowirl 73 (2)	5	1	Vortex	E+H Homepage	10.1	V 1.04.0x	000011	0057
	Prowirl 73 (2)	6	1	Vortex	E+H Homepage	10.1	V 1.05.0x	000011	0057
	Prowirl 73 (2)	7	1	Vortex	E+H Homepage	10.5	V 1.06.0x	000011	0057
	Prowirl 77	1	2	Vortex	AMS 6.x CD	6.x	V 1.0.06	000011	0037
	Prowirl 200	1	1	Vortex	E+H Homepage	10.5	V 1.00.xx	000011	0038
	Prowirl 200	2	1	Vortex	E+H Homepage	10.5	V 1.01.xx	000011	0038
	Prowirl 200	3	1	Vortex	E+H Homepage	10.5	V 1.02.xx	000011	0038
	T-Mass 65 (1)	1	1	Thermal - Mass	E+H Homepage	6.x	V 1.00.xx	000011	0065
	T-Mass 65 (2)	2	1	Thermal - Mass	E+H Homepage	9.x	V 1.01.xx	000011	0065
	t-mass 150	1	1	Thermal - Mass	E+H Homepage	10.5	V1.00xx	000011	0066
	t-mass 150 LT	1	1	Thermal - Mass	E+H Homepage	10.5	V1.00xx	000011	0068
<b>Temperature</b>	smartgrad TMD832	2	1	Head Mounted	AMS 6.x CD	10.1	V 1.3	000011	0078
	smartgrad TMD833	1	1	Compact	AMS 6.x CD	6.x	V 1.1	000011	0079
	smartgrad TMD842	1	1	DIN Rail Mounted	AMS 6.x CD	6.x	V 1.3	000011	007C
	iTEMP TMT122	2	1	DIN Rail	AMS 6.x CD	6.x	V 1.1	000011	00C9
	iTEMP TMT142	2	2	Field Housing	E+H Homepage	10.5	V 1.03.0x	000011	00CB

# Endress+Hauser AMS HART Device List

## Package 1.12.00

Type	Device	Dev Rev	DD Rev	Description	Available on	Min Required AMS Version	Software Version	Code	
								Manufacturer	Device
	iTEMP TMT162	1	1	Field Housing	E+H Homepage	6.x	V 1.0x.00	000011	00CA
	iTEMP TMT162	2	2	Field Housing	E+H Homepage	10.5	V 1.03.0x	000011	00CA
	iTEMP TMT182	1	2	Head Mounted	AMS 6.x CD	6.x	V 1.0	000011	00C8
	iTEMP TMT182	2	1	Head Mounted	AMS 6.x CD	6.x	V 1.1	000011	00C8
	iTEMP TMT82	1	1	Field Housing	E+H Homepage	10.5	V1.00.00	000011	00CC
	iTEMP TMT82	2	1	Field Housing	E+H Homepage	10.5	V1.01.xx	000011	11CC
<b>Components</b>	<b>WirelessHART Adapter SWA70</b>	<b>1</b>	<b>4</b>	<b>Field Housing</b>	<b>E+H Homepage</b>	<b>10.5</b>	<b>V1.xx.xx</b>	<b>000011</b>	<b>11F0</b>
	WirelessHART Adapter SWA70	2	2	Field Housing	E+H Homepage	11.5	V2.xx.xx	000011	11F0

(1) Not supported in AMS V10.0 (for details see Release Notes)

(2) EDD style (AMS V10.0 or higher required)

(3) Not supported in AMS V10.0 or higher (for details see Release Notes)

\* New Devices

\* Driver Modification