

Universal Suspension Assembly Holder CYH 101

**For pH-, redox-, oxygen-, conductivity assemblies,
oxygen and turbidity sensors.
With weather protection cover CYY 101**



Application

The universal suspension assembly holder CYH 101 mounted on an upright post is designed for use in open channels, basins or tanks.

Typical applications are:

- Sewage treatment, inflow and outflow
- Activated sludge basins
- Waste water treatment plants
- Neutralisation basins.

The CYH 101 is intended to suspend the following assemblies:

- DipFit W CYA 611
- DipFit W CPA 111, CPA 510, CPA 530
- DipFit W CLA 111

Direct attachment of the following sensors into the tube is also possible:

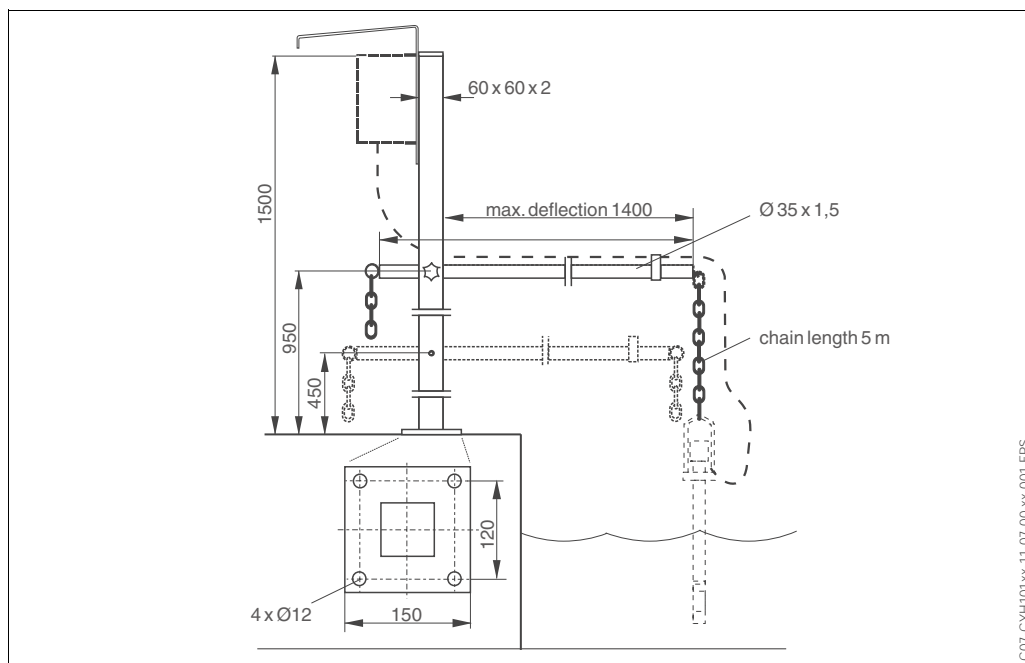
- Oxygen sensors
COS 3, OxyMax W COS 31,
COS 4, OxyMax W COS 41
- Turbidity sensors
TurbiMax W CUS 31,
TurbiMax W CUS 41

Features and benefits

- Simple and easy installation on basin rims
- Flexible adaption to local mounting conditions due to various mounting options and adjustments
- Easy rotation of the transverse pipe and altitude adjustment of the suspension chain permit optimal measuring point without interruption of operation
- Pendulum motion promotes the sensor self-cleaning effect
- The upright post is prepared for mounting of field transmitter

Operating conditions (installation)

Installation CYH 101-A/-C

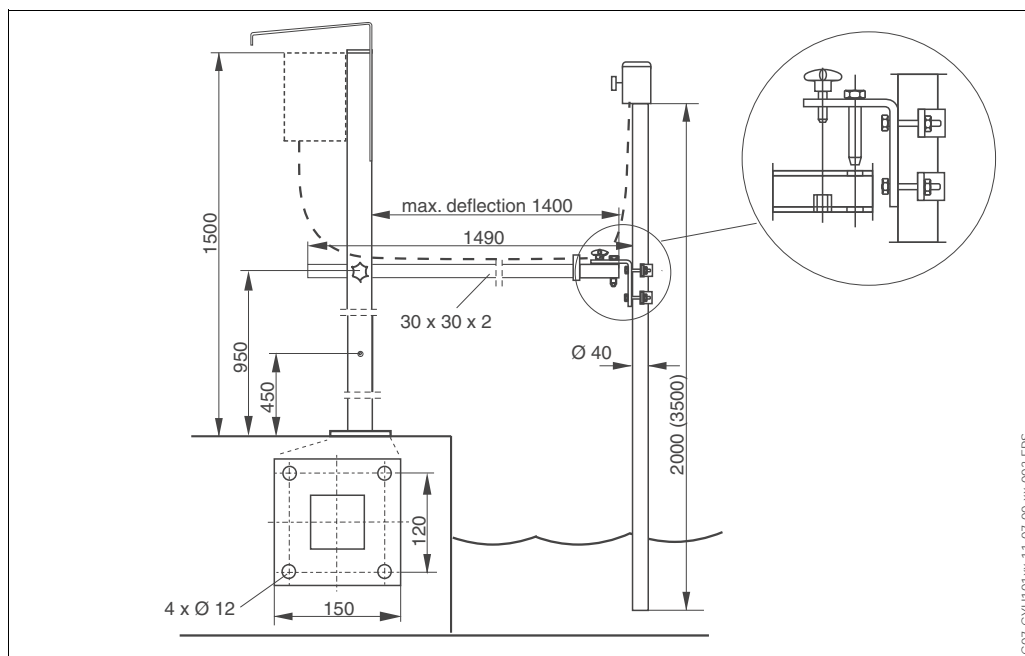


Universal suspension assembly holder CYH 101-A or -C

The suspension assembly holder CYH 101 is intended for installation on basin or channel rims. The upright post for fix installation holds up one (CYH 101-A) or two (CYH 101-C) transverse pipes at one of two possible altitudes.

An easily operated star handle is used to fix the transverse pipe in the desired position. The plastic chain threaded through the transverse pipe holds the assembly with the sensor. A plastic shackle is used to fix the chain. A transmitter (field housing version, CxM 153 or CxM 253) can be attached to the upright post. This requires the optional weather protection cover CYY 101.

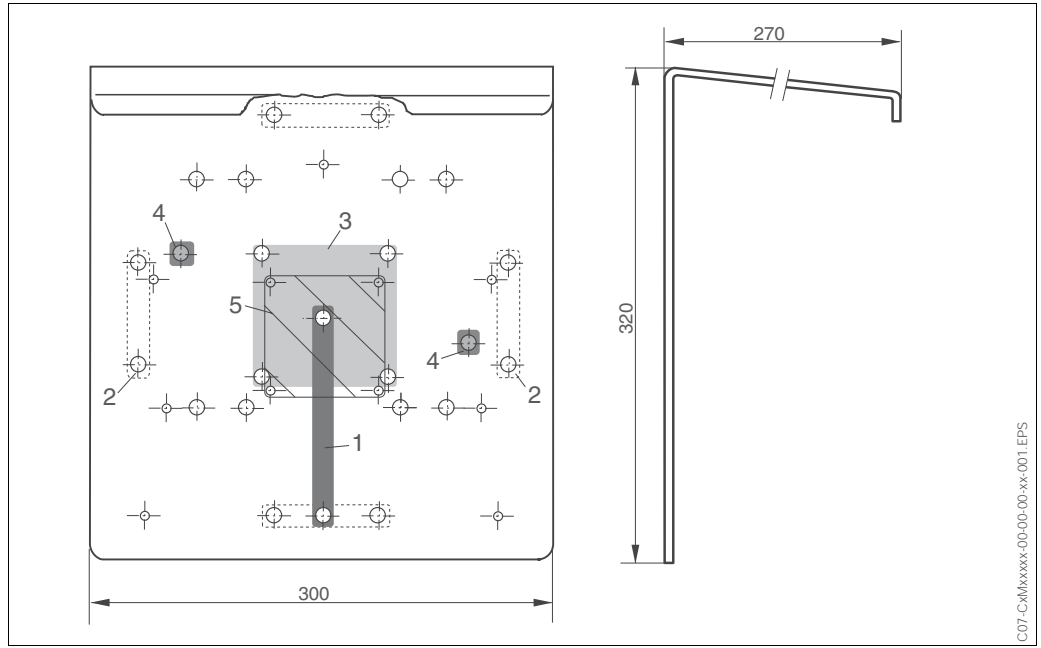
Installation CYH 101-D/-E



Universal suspension assembly holder CYH 101-D or -E

Versions CYH 101-D and CYH 101-E with immersion tube are intended for oxygen or turbidity sensors. The upright post is analogue to versions A or C. The immersion tube is attached to the vertical side of the transverse pipe angle bracket by two screwed brackets. The horizontal side of the angle bracket is equipped with a locating pin and a fastening screw with a star handle. This construction assures quick and simple attachment to the transverse pipe. Especially at medium flow rates above 0.5 m/s a reproducible sensor positioning with optimum self-cleaning effect is assured.

**Installation
weather protection cover
CYY 101**



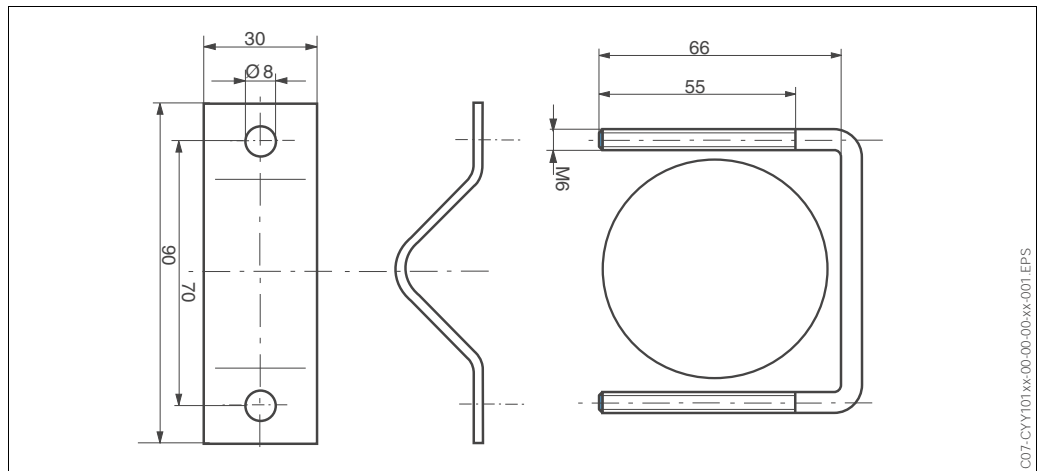
Dimensions of the weather protection cover CYY 101

The weather protection cover is fixed to the upright post by 2 M8 screws (boreholes pos. 1). On a vertical or on a horizontal pipe the weather protection cover is to be fixed at two positions (borehole positions 2). The parts for fixing (figure below) are contained in the round post mount for CYY 101 (see accessories).

The boreholes pos. 3 are for the **post mounting** of field housing transmitters, e.g. CPM 153.

Use the boreholes pos. 5 for post mounting of Lquisys field housing transmitters.

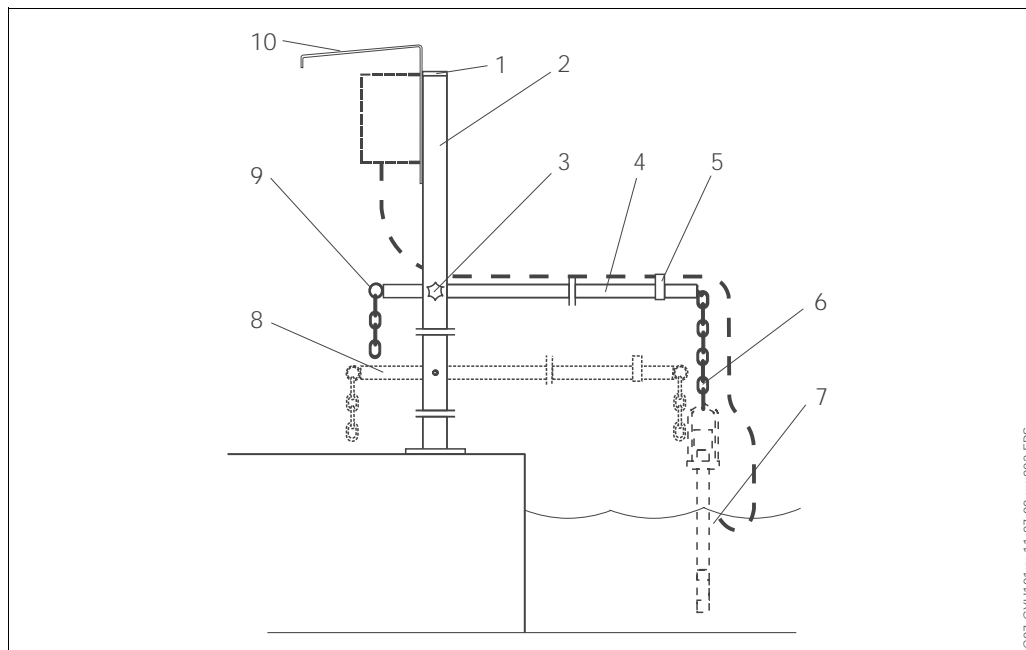
The boreholes pos. 4 are for the **wall mounting** of field housing transmitters, e.g. CPM 153 or Lquisys M.



Round post installation of weather protection cover CYY 101

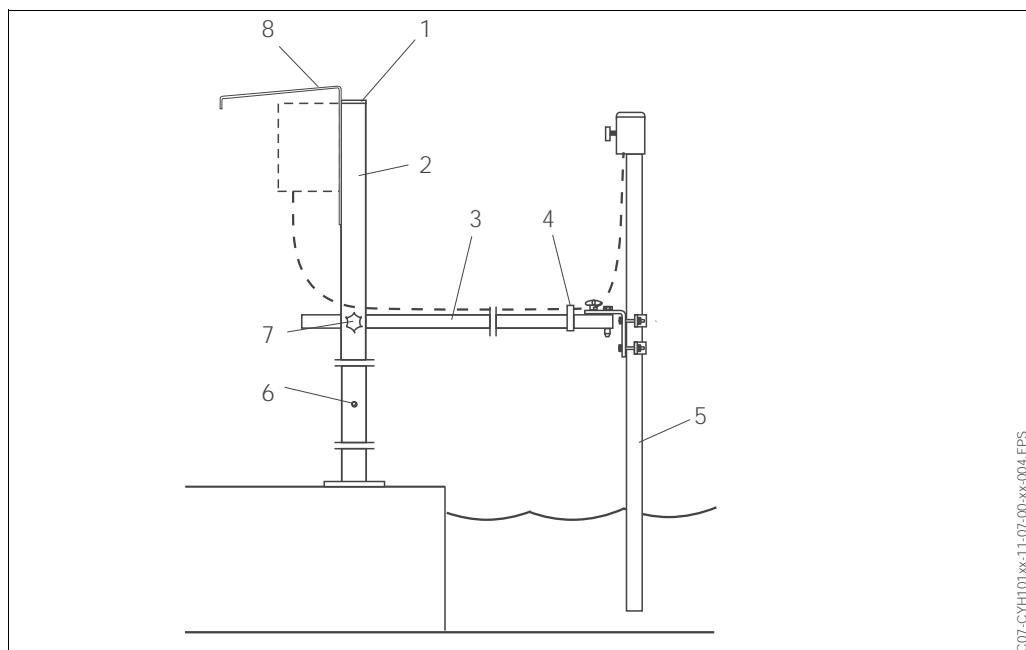
Mechanical construction

Design



Mechanical construction CYH 101-A or -C

- | | |
|--|---|
| 1 Filler plug | 6 Plastic chain |
| 2 Upright post (square tube, stainl. steel AISI 304) | 7 Immersion assembly (not in scope of supply) |
| 3 Star handle | 8 2nd transverse pipe (version -C) |
| 4 Transverse pipe (stainless steel AISI 304) | 9 Plastic shackle |
| 5 Cable clamp | 10 Weather protection cover CYY 101 (option) |



Mechanical construction CYH 101-D or -E

- | | |
|--|---|
| 1 Filler plug | 5 Immersion tube |
| 2 Upright post (square tube, stainl. steel AISI 304) | 6 Mounting pos. for 2nd transverse pipe |
| 3 Transverse pipe (stainless steel AISI 304) | 7 Star handle |
| 4 Cable clamp | 8 Weather protection cover CYY 101 (option) |

Technical Data

Weights

Upright post	6 kg
Transverse pipe	2 kg
Immersion tube 2m / 3,5 m	2,5 kg / 4 kg
Weather protection cover CYY 101	3 kg

Materials

Upright post	stainless steel AISI 304
Filler plug	PE
Base plate	stainless steel AISI 304
Transverse pipe	stainless steel AISI 304
Immersion tube	stainless steel AISI 304
Star handle	stainl. steel AISI 304 (thermoset resin)
Chain	PP
Safety shackle	PA
Weather protection cover CYY 101	stainless steel AISI 304

Dimensions

Upright post	1495 x 60 x 60 mm
Through holes for transverse pipe	H = 450 bzw. 950 mm
Base plate	150 x 150 mm
Mounting holes	4 x Ø 12 mm
Hole pattern of base plate	120 x 120 mm
Transverse pipe, version CYH 101-A / -C	1490 x Ø 35 mm
Square tube transverse pipe, version CYH 101-D / -E	1490 x 30 x 30 mm
Immersion tube, version CYH 101-D / -E	2000 / 3500 x Ø 40 mm
Chain	5000 mm
Weather protection cover	320 x 270 x 300 mm (H x W x D)

Ordering structure

Universal suspension assembly holder CYH 101

Version	
A	Upright post 1,5 m with transverse pipe and chain
C	Upright post 1,5 m with 2 transverse pipes and chains
D	Upright post 1,5 m with transverse pipe and immersion tube 2 m
E	Upright post 1,5 m with transverse pipe and immersion tube 3.5 m
Y	Special version

CYH 101- Complete order code

Accessories

Weather protection cover CYY 101

Version	
A	Stainless steel, 320 x 270 x 300 mm (H x D x W)

CYY 101- Complete order code

Weather protection cover for the mounting of two transmitters on request.

Round post mounts

For the installation of the weather protection cover CYY 101 on a vertical or on a horizontal pipe.
Order No. 50062121

Immersion tube CYY 105

Version	
A	Immersion tube length 2 m
D	Immersion tube length 3,5 m

CYY 105- Complete order code

Basin rim installation CYY 106

Version	
A	Standard, stainless steel AISI 304

CYY 106- Complete order code

Documentation

Assemblies

- DipFit W CYA 611, Technical Information TI 166C/07/en; Order No. 50085985
- DipFit W CPA 111, Technical Information TI 112C/07/en; Order No. 50066450
- DipFit W CPA 510, Technical Information TI 011C/07/en; Order No. 50043900
- DipFit W CPA 530, Technical Information TI 018C/07/en; Order No. 50043902

Endress + Hauser
GmbH+Co.
Instruments International
P.O. Box 2222
D-79574 Weil am Rhein
Germany

Tel. (07621) 975-02
Fax (07621) 975-345
<http://www.endress.com>
info@ii.endress.com

Endress + Hauser
The Power of Know How

