



Level



Pressure



Flow



Temperature



Liquid
Analysis



Registration



Systems
Components



Services



Solutions

Levelflex M FMP40 in Filler Bowl- Food

Levelflex M provides accurate measurements in changing and foaming liquids



Storage tanks



Levelflex M FMP40 with tri-clamp fitting



Milk products

Levelflex with sanitary components provides mapping and measures through foaming and varying liquids.

Company profile

A major milk processing plant.

Application specifics

Tri-clamp connection/sanitary design
Stainless steel housing
Moving bowl
Changing products: skim, 2% and regular milk, lemonade, ice tea, and flavored milk.
Spray ball in tank near level instrument, which is used for CIP of the tank.

Instrument description

The Levelflex M is a top-mounted, compact level transmitter that operates with microimpulse radar on the guided time-of-flight principle. Fluctuations in the density, temperature, or build-up do not influence the measurement

Measuring principle

The Levelflex is a “downward-looking” Time-of-Flight (ToF) measuring system which measures the distance from the process connection to the material surface. An electrical pulse is launched and guided down the probe. The pulses are reflected by the product surface, received by the electronics, evaluated and converted into level information.

Results

Levelflex mapping took care of the spray ball interference. Having the spray ball in tank near level instrument is no longer an issue. The First Echo Factor (FEF) in the service measure was reduced to help ignore the foam created by the skim and 2% milk.

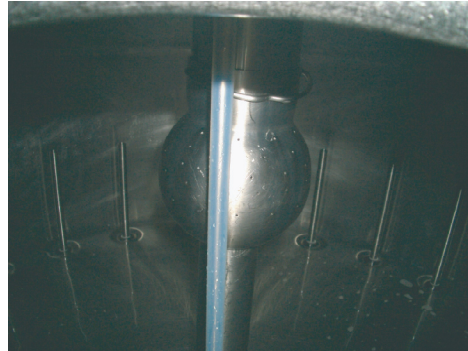
Note:

It should be noted that in filler bowl applications where the level changes very fast, a capacitance probe is also a good solution.

For more information, contact
Endress+Hauser, Inc.
317-535-7138
www.us.endress.com



Levelflex M FMP40 on filler bowl



Spray ball

ISO 9001:2000 Certified

USA

Endress+Hauser, Inc.
 2350 Endress Place
 Greenwood, IN 46143
 Tel. 317-535-7138
 Sales 888-ENDRESS
 Service 800-642-8737
 Fax 317-535-8498
 inquiry@us.endress.com
 www.us.endress.com

Canada

Endress+Hauser, Canada
 1075 Sutton Drive
 Burlington, ON L7L 5Z8
 Tel. 905-681-9292
 800-668-3199
 Fax 905-681-9444
 info@ca.endress.com
 www.ca.endress.com

Mexico

Endress+Hauser México, S.A. de C.V.
 Fernando Montes de Oca 21 Edificio A Piso 3
 Fracc. Industrial San Nicolás
 54030. Tlalnepantla de Baz
 Estado de México
 México
 Tel. +52 55 5321 2080
 Fax +52 55 5321 2099
 eh.mexico@mx.endress.com
 www.mx.endress