

Non hazardous location

Hazardous location

Class I, Div. 2, Groups A, B, C, D
Class I, Zone 2, IIC

Suitable for Cl. I, Div. 2, Groups A, B, C, D, Class I, Zone 2, IIC
Hazardous Location Installation

1. Install per Canadian Electrical Code, Part I or National Electrical Code (ANSI/NFPA70) as applicable
- max. supply voltage 45 VDC
- max. ambient temperature: see table
2. Warning: Explosion hazard - Do not disconnect equipment unless power has been switched off or the area is known to be non hazardous.
Avertissement : Risque d'explosion - avant de déconnecter l'équipement, couper le courant ou s'assurer que l'emplacement est désigné non dangereux.
Warning: Open circuit before removing cover.
Avertissement : Ouvrir le circuit avant d'enlever le couvercle.
Warning: Substitution of components may impair suitability for Cl. I, Div. 2.
Avertissement : La substitution de composants peut rendre ce matériel inacceptable pour les emplacements de Cl. I, Div. 2.
3. Transmitter housing and sensor modules must have the same ground potential (e.g. transmitter housing and sensor modules all mounted to the same metal structure). If potential equalisation can not be achieved by the installation, the devices must be interconnected with a suitable bonding conductor using the external ground connections.
4. Transmitter provides noninvasive field wiring circuits for connection to and between HP Sensor module 1 and LP Sensor module 2.
5. Sensor modules may only be connected to the transmitter and interconnected to each other. Any further connections are not allowed.

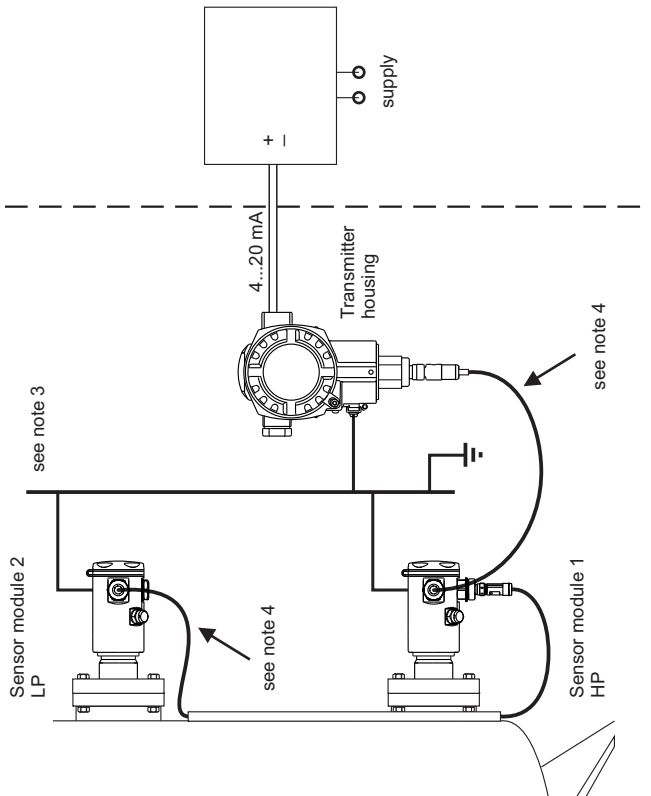


Table: Permissible ambient temperature and temperature code

Temperature code	Permissible ambient temperature, electronic compartment
T6	-40 °C...50 °C
T4	-40 °C...70 °C

The devices are CSA certified as Single Seal per ANSI/ISA 12.27.01 as tabulated below; therefore installation of external secondary seals is not required.

Single Seal	Model	Limited to:
	FMD71	MWP*

* Limitations of the Maximum Working Pressure (MWP) are marked on the nameplate and must be considered!

** Limitations of the process temperature range depending on the used version are specified in the applicable technical information of the manufacturer and must be considered!

