



Level



Pressure



Flow



Temperature



Liquid
Analysis



Registration



Systems
Components



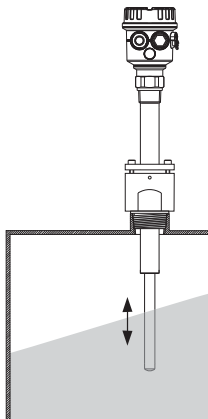
Services



Solutions

简明操作指南

Soliphant T FTM21



R 1½、1½ - 11½ NPT

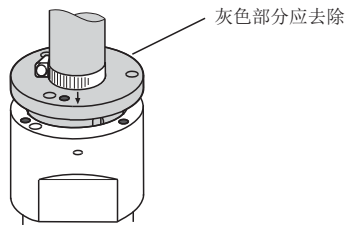
带压滑动套管

KA00237F/28/zh/03.08
71237878

Endress+Hauser 
People for Process Automation

目录

设备标识	3
技术参数	4
安装	5
复位开关点	11

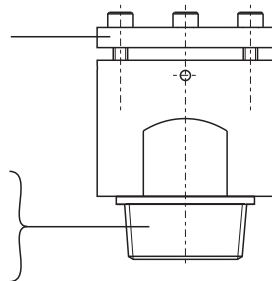


设备标识

AISI 316L

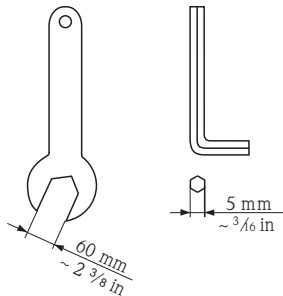
52023312: R 1½,
AISI 316L

52025090: 1½ - 11½ NPT,
AISI 316L



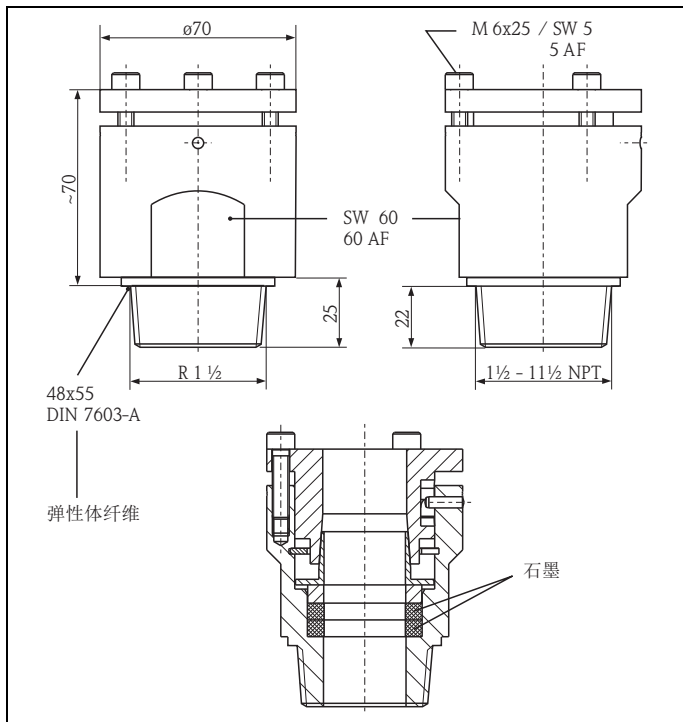
所需工具

扳手60 AF
内六角扳手5 AF



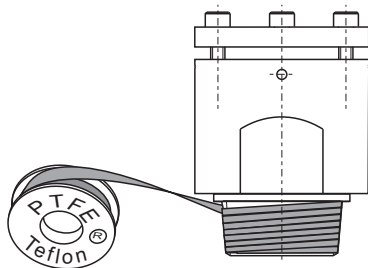
技术参数

单位: mm



100 mm = 3.94 in

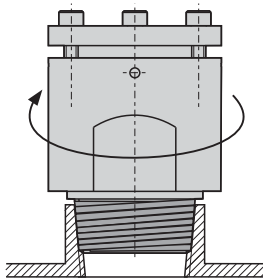
1.



R 1½,
1½ - 1½ NPT

安装
拧紧

2.

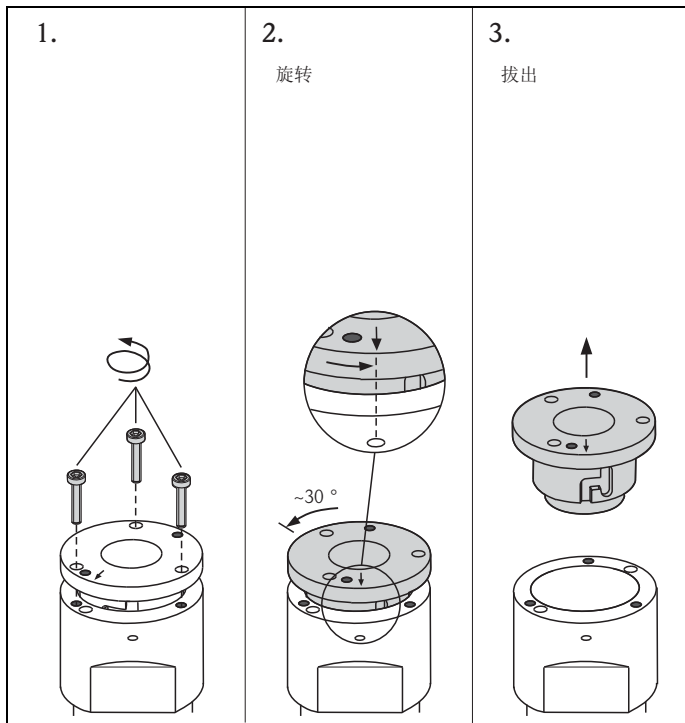


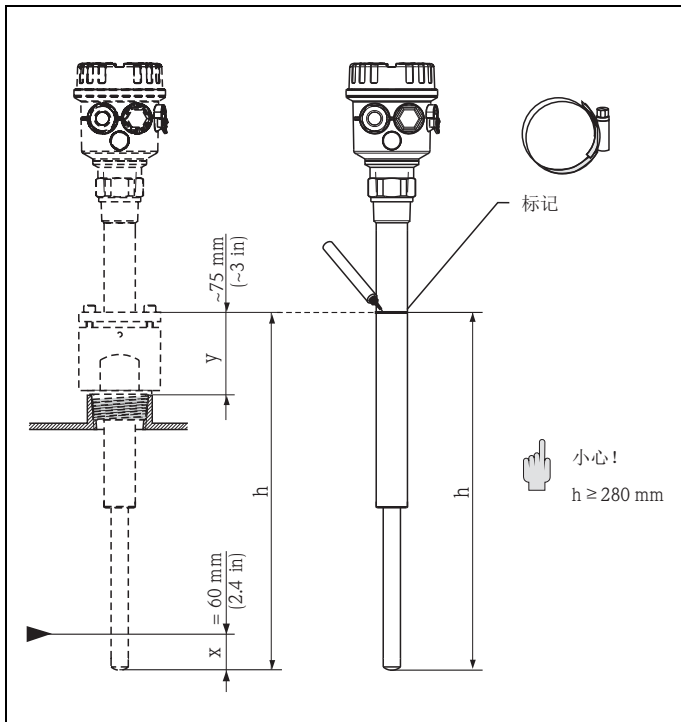
R 1½
52023313
1½ - 1½ NPT
52025090

拆除顶盖

○ = 孔

● = 螺纹

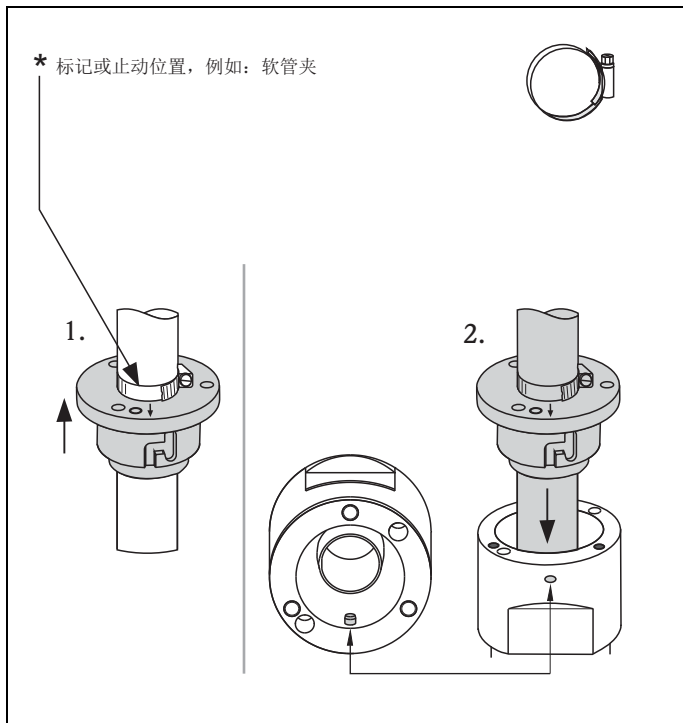




标记高度 h
包括 x (有效开关范围) 和 y

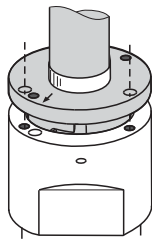
\blacktriangleright 开关点 (取决于介质)

顶部安装，
按下 Soliphant

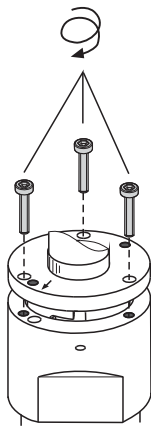


1.

~30°



2.

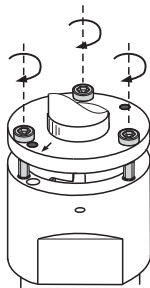


牢固拧紧顶部

1.

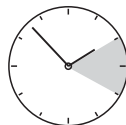
拧紧螺丝

9...10 Nm
(6.7...7.5 ft lbs)



2.

等待

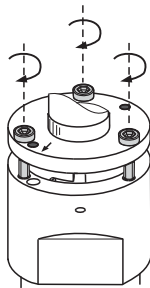


1...2 h

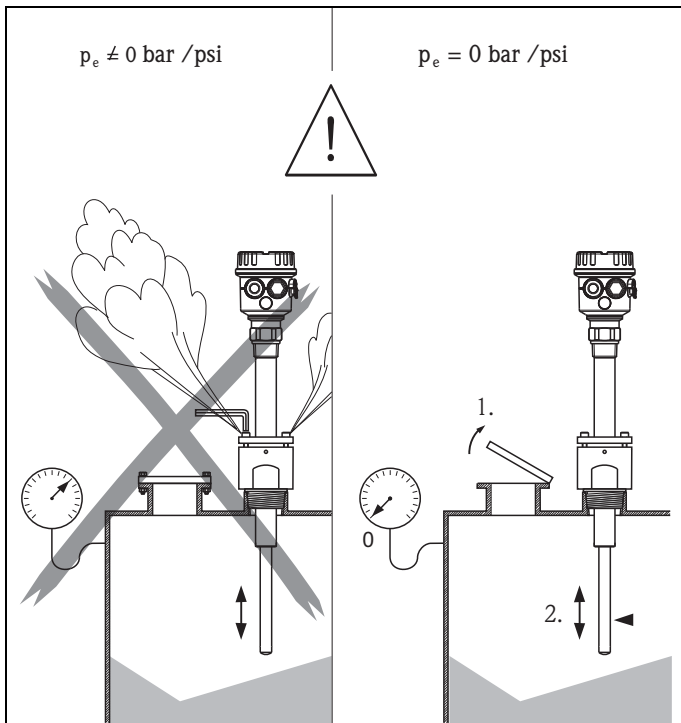
3.

再次拧紧

9...10 Nm
(6.7...7.5 ft lbs)

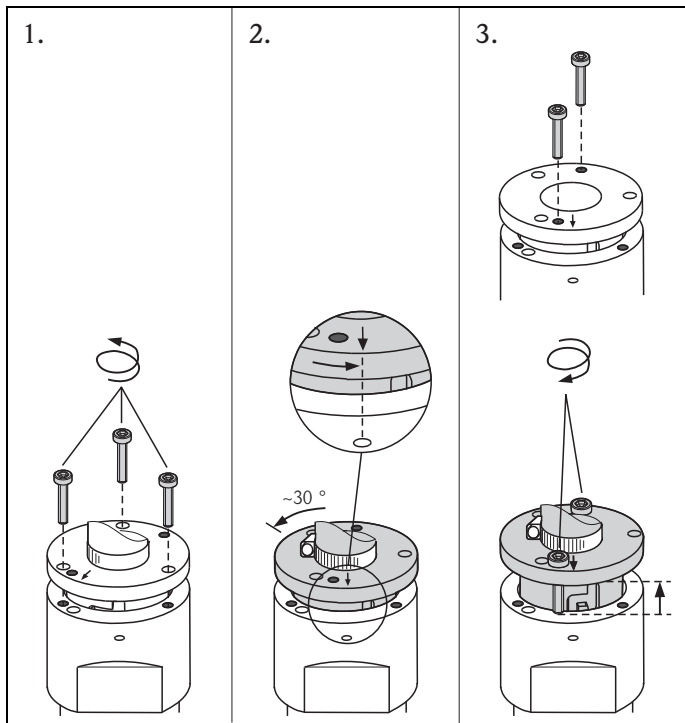


复位开关点
常压罐体!

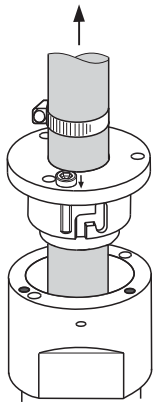


拆除顶盖

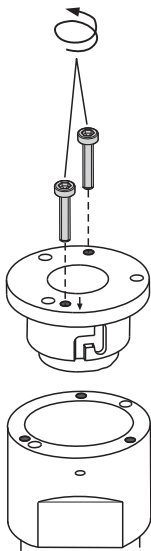
○ = 孔
● = 螺纹



1.



2.



复位开关点
参考第6...9页

拔出 Soliphant



$T = -40\dots+150\text{ }^{\circ}\text{C}$ ($-60\dots+300\text{ }^{\circ}\text{F}$)



$p_e = -1\dots+25\text{ bar}$ ($-14.5\dots+360\text{ psi}$)



$M = 1.79\text{ kg}$ (3.94 lbs)

www.endress.com/worldwide

